

Baseline Assessment – Stream Attributes

Reach S-J60 (Timber Mat Crossing) Perennial Spread A Wetzel County, West Virginia

Data	Included
Photos	✓
SWVM Form	✓ Water quality data used from benthic readings
FCI Calculator and HGM Form	N/A – Perennial stream (not shadeable, slope <4%)
RBP Physical Characteristics Form	✓
Water Quality Data	✓
RBP Habitat Form	✓
RBP Benthic Form	✓
Benthic Identification Sheet	✓
Wolman Pebble Count	✓
Reference Reach Software Pebble Count Data	✓
Longitudinal Profile and Cross Sections	✓

Spread A Stream S-J60 (Timber Mat Crossing) Wetzel County

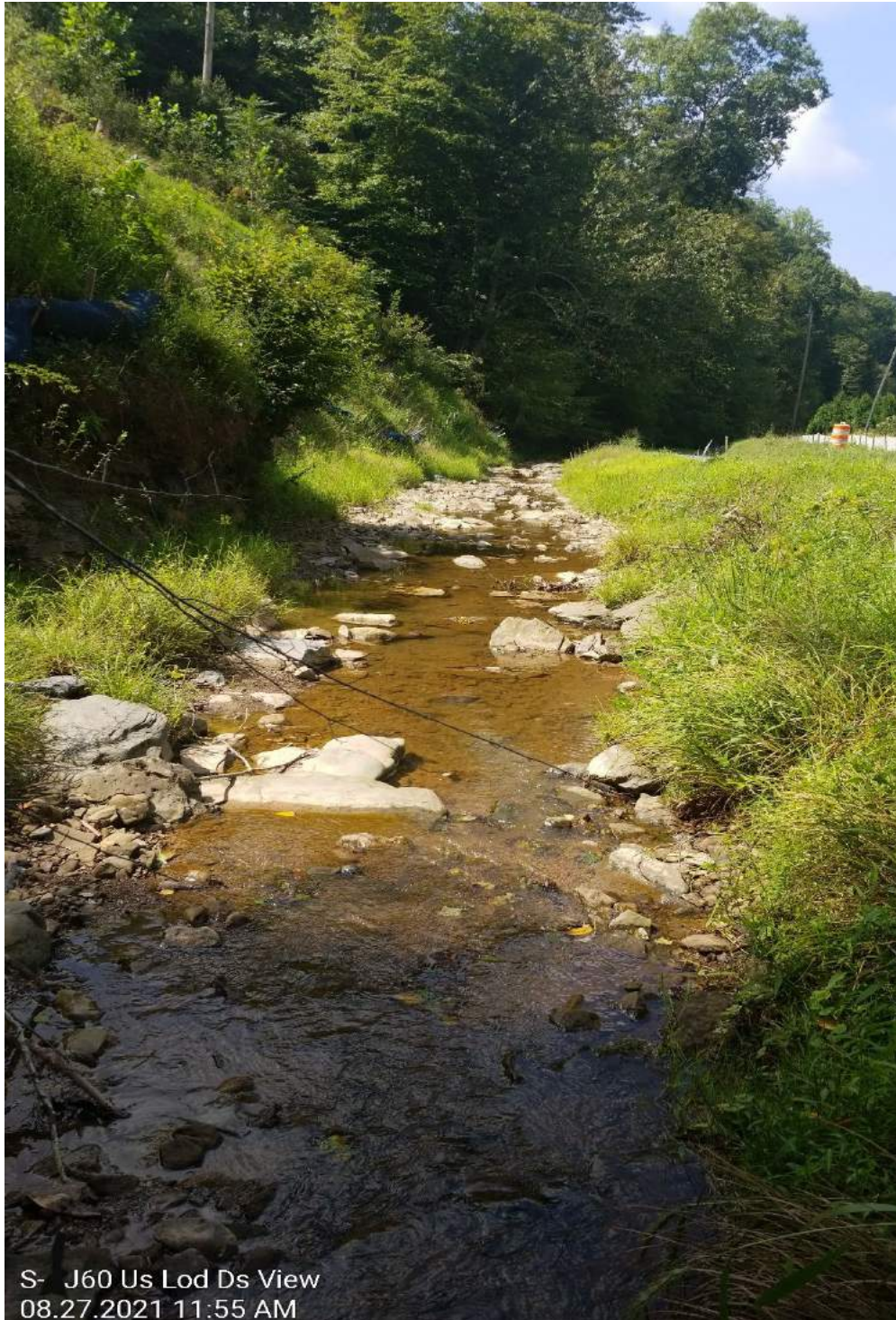


Photo Type: US, DS VIEW
Location, Orientation, Photographer Initials: Upstream Edge of ROW, Downstream View: JR/MB
Lat: 39.474354 Long: -80.511825

Spread A Stream S-J60 (Timber Mat Crossing) Wetzel County



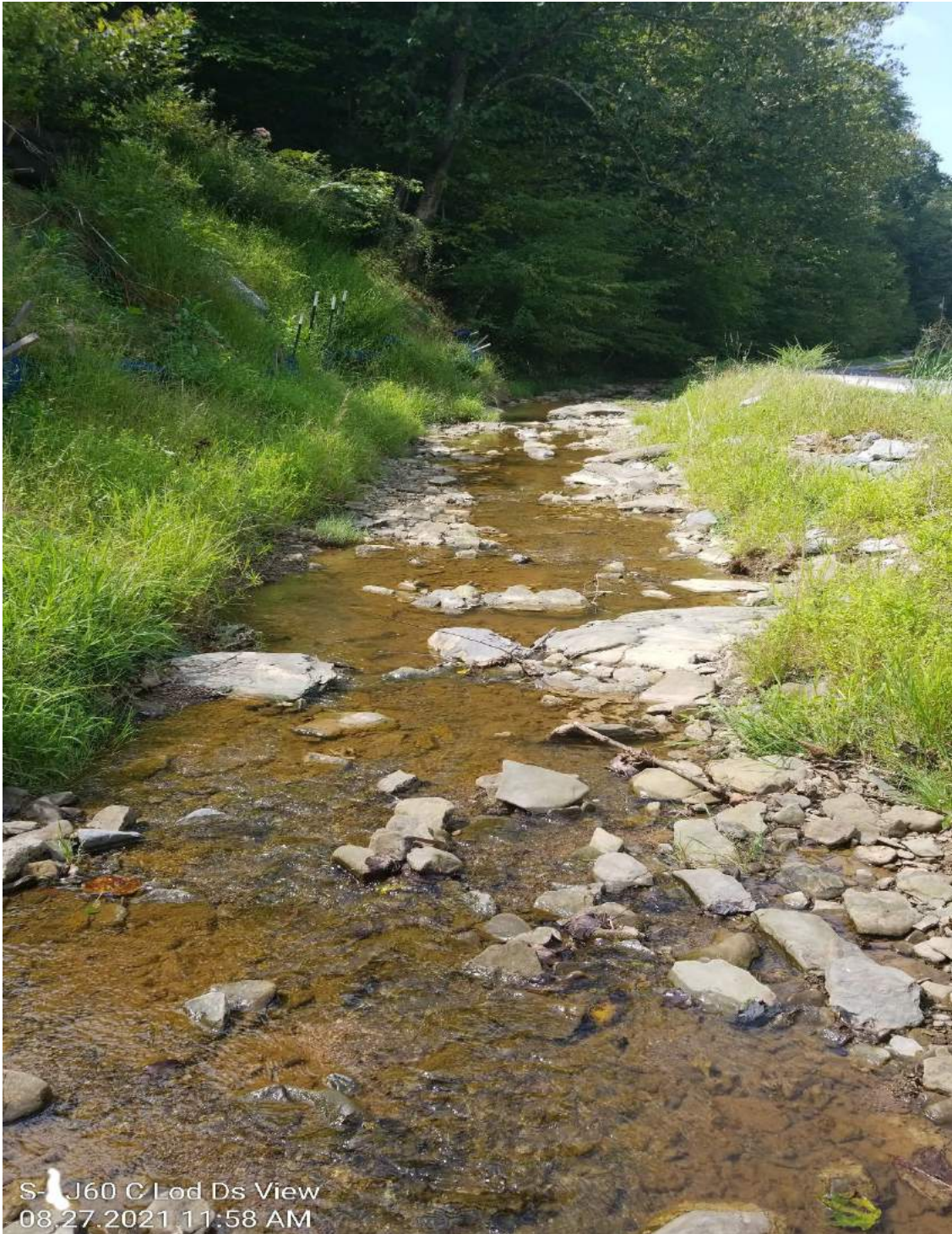
Photo Type: US, US VIEW
Location, Orientation, Photographer Initials: Upstream Edge of ROW, Upstream View: JR/MB
Lat: 39.474354 Long: -80.511825

Spread A Stream S-J60 (Timber Mat Crossing) Wetzel County



Photo Type: US View at Center
Location, Orientation, Photographer Initials: ROW Center, Upstream View, JR/MD
Lat: 39.474354 Long: -80.511825

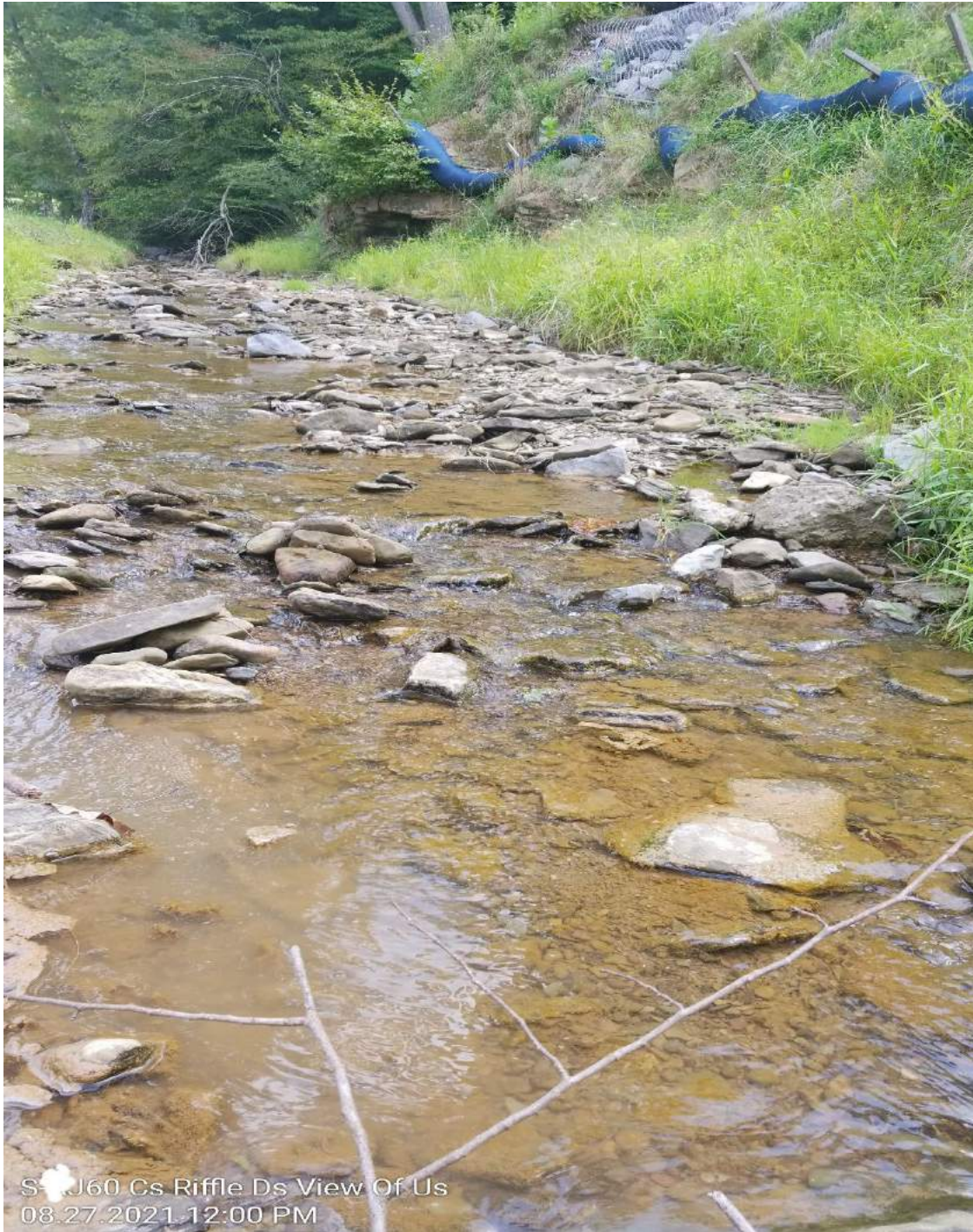
Spread A Stream S-J60 (Timber Mat Crossing) Wetzel County



S-J60 C Lod Ds View
08.27.2021 11:58 AM

Photo Type: DS View at Center
Location, Orientation, Photographer Initials: ROW Center, Downstream View, JR/MB
Lat: 39.474354 Lon: -80.511825

Spread A Stream S-J60 (Timber Mat Crossing) Wetzel County



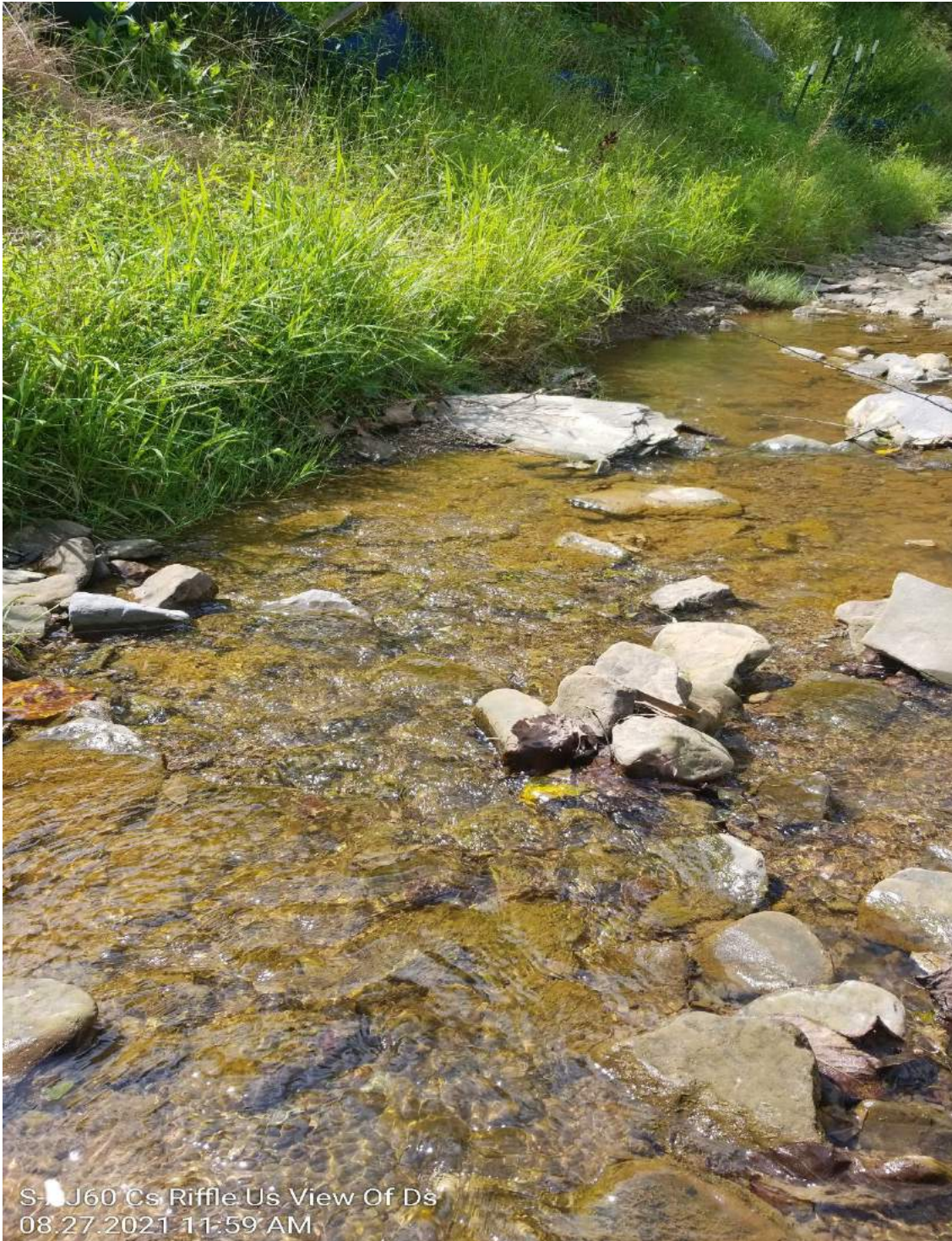
S J60 Cs Riffle Ds View Of Us
08.27.2021 12:00 PM

Photo Type: Riffle, US View

Location, Orientation, Photographer Initials: Downstream of Riffle, Upstream View, JR/MB

Lat: 39.474354 Long: -80.511825

Spread A Stream S-J60 (Timber Mat Crossing) Wetzel County



S-J60 Cs Riffle Us View Of Ds
08.27.2021 11:59 AM

Photo Type: Riffle, DS View

Location, Orientation, Photographer Initials: Upstream of Riffle, Downstream View, JR/MB

Lat: 39.474354 Long: -80.511825

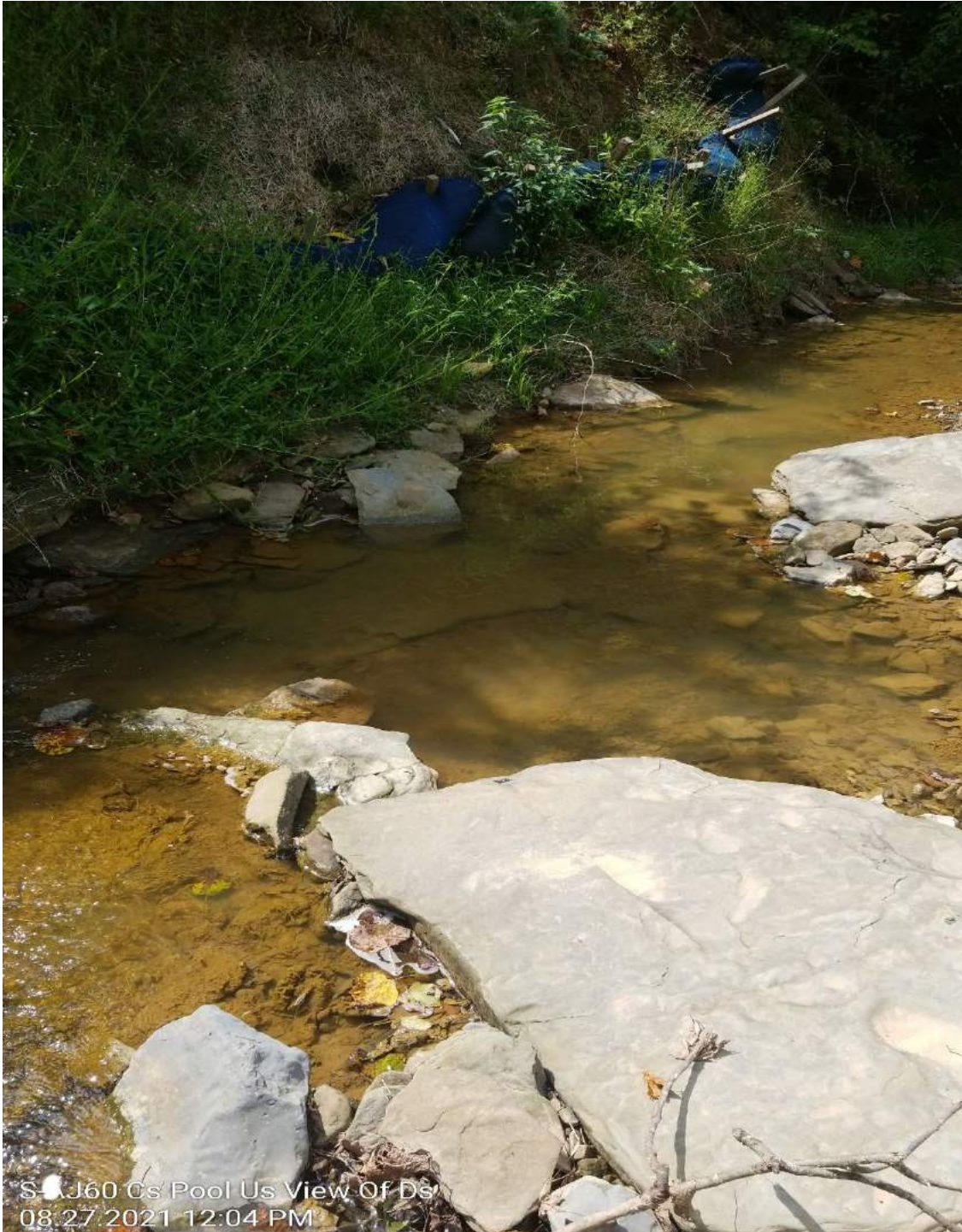
Spread A Stream S-J60 (Timber Mat Crossing) Wetzel County



S-J60 Cs Pool Ds View Of Us
08.27.2021 12:03 PM

Photo Type: Pool, DS View
Location, Orientation, Photographer Initials: Upstream of Pool, Downstream View, JR/MB
Lat: 39.474354 Long: -80.511825

Spread A Stream S-J60 (Timber Mat Crossing) Wetzel County



S-J60 Cs' Pool Us View Of De
08:27:2021 12:04 PM

Photo Type: Pool, US View

Location, Orientation, Photographer Initials: Downstream of Pool, Upstream View, JR/MB
Lat: 39.474354 Long: -80.511825

Spread A Stream S-J60 (Timber Mat Crossing) Wetzel County



S-J60 Ds Lod Us View
08.27.2021 12:05 PM

Photo Type: DS, US View
Location, Orientation, Photographer Initials: DS Edge of ROW, Upstream View, JR/MB
Lat: 39.474354 Long: -80.511825

Spread A Stream S-J60 (Timber Mat Crossing) Wetzel County



S-J60 Ds Lod Ds View
08.27.2021 12:05 PM

Photo Type: DS, DS View
Location, Orientation, Photographer Initials: DS Edge of ROW, Downstream View, JR/MB
Lat: 39.474354 Long: -80.511825

USACE FILE NO./ Project Name:		Mountain Valley Pipeline		IMPACT COORDINATES:		Lat.		39.474354		Lon.		-80.511825		WEATHER:		Sunny		DATE:		August 27, 2021			
IMPACT STREAM/SITE ID AND SITE DESCRIPTION:				S-J60				MITIGATION STREAM CLASS./SITE ID AND SITE DESCRIPTION:				Comments:											
(watershed size (acreage), unaltered or impairments)								(watershed size (acreage), unaltered or impairments)															
STREAM IMPACT LENGTH:		20		FORM OF MITIGATION:		RESTORATION (Levels I-III)		MIT COORDINATES:		Lat.		Lon.		PRECIPITATION PAST 48 HRS:				Mitigation Length:					
Column No. 1- Impact Existing Condition (Debit)				Column No. 2- Mitigation Existing Condition - Baseline (Credit)				Column No. 3- Mitigation Projected at Five Years Post Completion (Credit)				Column No. 4- Mitigation Projected at Ten Years Post Completion (Credit)				Column No. 5- Mitigation Projected at Maturity (Credit)							
Stream Classification:		Perennial		Stream Classification:				Stream Classification:		0		Stream Classification:		0		Stream Classification:		0		Stream Classification:		0	
Percent Stream Channel Slope		3.2		Percent Stream Channel Slope				Percent Stream Channel Slope		0		Percent Stream Channel Slope		0		Percent Stream Channel Slope		0		Percent Stream Channel Slope		0	
HGM Score (attach data forms):				HGM Score (attach data forms):				HGM Score (attach data forms):				HGM Score (attach data forms):				HGM Score (attach data forms):							
Average				Average				Average				Average				Average							
Hydrology		0		Hydrology		0		Hydrology		0		Hydrology		0		Hydrology		0		Hydrology		0	
Biogeochemical Cycling		0		Biogeochemical Cycling		0		Biogeochemical Cycling		0		Biogeochemical Cycling		0		Biogeochemical Cycling		0		Biogeochemical Cycling		0	
Habitat				Habitat				Habitat				Habitat				Habitat							
PART I - Physical, Chemical and Biological Indicators				PART I - Physical, Chemical and Biological Indicators				PART I - Physical, Chemical and Biological Indicators				PART I - Physical, Chemical and Biological Indicators				PART I - Physical, Chemical and Biological Indicators							
PHYSICAL INDICATOR (Applies to all streams classifications)				PHYSICAL INDICATOR (Applies to all streams classifications)				PHYSICAL INDICATOR (Applies to all streams classifications)				PHYSICAL INDICATOR (Applies to all streams classifications)				PHYSICAL INDICATOR (Applies to all streams classifications)							
USEPA RBP (High Gradient Data Sheet)				USEPA RBP (Low Gradient Data Sheet)				USEPA RBP (High Gradient Data Sheet)				USEPA RBP (High Gradient Data Sheet)				USEPA RBP (High Gradient Data Sheet)							
1. Epifaunal Substrate/Available Cover		0-20		1. Epifaunal Substrate/Available Cover		0-20		1. Epifaunal Substrate/Available Cover		0-20		1. Epifaunal Substrate/Available Cover		0-20		1. Epifaunal Substrate/Available Cover		0-20		1. Epifaunal Substrate/Available Cover		0-20	
2. Embeddness		0-20		2. Embeddness		0-20		2. Embeddness		0-20		2. Embeddness		0-20		2. Embeddness		0-20		2. Embeddness		0-20	
3. Velocity/ Depth Regime		0-20		3. Velocity/ Depth Regime		0-20		3. Velocity/ Depth Regime		0-20		3. Velocity/ Depth Regime		0-20		3. Velocity/ Depth Regime		0-20		3. Velocity/ Depth Regime		0-20	
4. Sediment Deposition		0-20		4. Sediment Deposition		0-20		4. Sediment Deposition		0-20		4. Sediment Deposition		0-20		4. Sediment Deposition		0-20		4. Sediment Deposition		0-20	
5. Channel Flow Status		0-20		5. Channel Flow Status		0-20		5. Channel Flow Status		0-20		5. Channel Flow Status		0-20		5. Channel Flow Status		0-20		5. Channel Flow Status		0-20	
6. Channel Alteration		0-20		6. Channel Alteration		0-20		6. Channel Alteration		0-20		6. Channel Alteration		0-20		6. Channel Alteration		0-20		6. Channel Alteration		0-20	
7. Frequency of Riffles (or bends)		0-20		7. Frequency of Riffles (or bends)		0-20		7. Frequency of Riffles (or bends)		0-20		7. Frequency of Riffles (or bends)		0-20		7. Frequency of Riffles (or bends)		0-20		7. Frequency of Riffles (or bends)		0-20	
8. Bank Stability (LB & RB)		0-20		8. Bank Stability (LB & RB)		0-20		8. Bank Stability (LB & RB)		0-20		8. Bank Stability (LB & RB)		0-20		8. Bank Stability (LB & RB)		0-20		8. Bank Stability (LB & RB)		0-20	
9. Vegetative Protection (LB & RB)		0-20		9. Vegetative Protection (LB & RB)		0-20		9. Vegetative Protection (LB & RB)		0-20		9. Vegetative Protection (LB & RB)		0-20		9. Vegetative Protection (LB & RB)		0-20		9. Vegetative Protection (LB & RB)		0-20	
10. Riparian Vegetative Zone Width (LB & RB)		0-20		10. Riparian Vegetative Zone Width (LB & RB)		0-20		10. Riparian Vegetative Zone Width (LB & RB)		0-20		10. Riparian Vegetative Zone Width (LB & RB)		0-20		10. Riparian Vegetative Zone Width (LB & RB)		0-20		10. Riparian Vegetative Zone Width (LB & RB)		0-20	
Total RBP Score		Suboptimal		Total RBP Score		Poor		Total RBP Score		Poor		Total RBP Score		Poor		Total RBP Score		Poor		Total RBP Score		Poor	
Sub-Total		0.65		Sub-Total		0		Sub-Total		0		Sub-Total		0		Sub-Total		0		Sub-Total		0	
CHEMICAL INDICATOR (Applies to Intermittent and Perennial Streams)				CHEMICAL INDICATOR (Applies to Intermittent and Perennial Streams)				CHEMICAL INDICATOR (Applies to Intermittent and Perennial Streams)				CHEMICAL INDICATOR (Applies to Intermittent and Perennial Streams)				CHEMICAL INDICATOR (Applies to Intermittent and Perennial Streams)							
WVDEP Water Quality Indicators (General)				WVDEP Water Quality Indicators (General)				WVDEP Water Quality Indicators (General)				WVDEP Water Quality Indicators (General)				WVDEP Water Quality Indicators (General)							
Specific Conductivity				Specific Conductivity				Specific Conductivity				Specific Conductivity				Specific Conductivity							
300-399 - 70 points		0-90		300-399 - 70 points		0-90		300-399 - 70 points		0-90		300-399 - 70 points		0-90		300-399 - 70 points		0-90		300-399 - 70 points		0-90	
pH		8.1-9.0 = 45 points		pH		5-90		pH		5-90		pH		5-90		pH		5-90		pH		5-90	
DO		>5.0 = 30 points		DO		10-30		DO		10-30		DO		10-30		DO		10-30		DO		10-30	
Sub-Total		0.725		Sub-Total		0		Sub-Total		0		Sub-Total		0		Sub-Total		0		Sub-Total		0	
BIOLOGICAL INDICATOR (Applies to Intermittent and Perennial Streams)				BIOLOGICAL INDICATOR (Applies to Intermittent and Perennial Streams)				BIOLOGICAL INDICATOR (Applies to Intermittent and Perennial Streams)				BIOLOGICAL INDICATOR (Applies to Intermittent and Perennial Streams)				BIOLOGICAL INDICATOR (Applies to Intermittent and Perennial Streams)							
WV Stream Condition Index (WVSCI)				WV Stream Condition Index (WVSCI)				WV Stream Condition Index (WVSCI)				WV Stream Condition Index (WVSCI)				WV Stream Condition Index (WVSCI)							
Good		0-100		Good		0-1		Good		0-100		Good		0-100		Good		0-100		Good		0-100	
Sub-Total		0.7148		Sub-Total		0		Sub-Total		0		Sub-Total		0		Sub-Total		0		Sub-Total		0	
PART II - Index and Unit Score				PART II - Index and Unit Score				PART II - Index and Unit Score				PART II - Index and Unit Score				PART II - Index and Unit Score							
Index		Linear Feet		Index		Linear Feet		Index		Linear Feet		Index		Linear Feet		Index		Linear Feet		Index		Linear Feet	
0.697		20		0		0		0		0		0		0		0		0		0		0	
Unit Score		13.932		Unit Score		0		Unit Score		0		Unit Score		0		Unit Score		0		Unit Score		0	

**PHYSICAL CHARACTERIZATION/WATER QUALITY FIELD DATA SHEET
(FRONT)**

STREAM NAME _____		LOCATION _____	
STATION # _____ RIVERMILE _____		STREAM CLASS _____	
LAT _____ LONG _____		RIVER BASIN _____	
STORET # _____		AGENCY _____	
INVESTIGATORS _____			
FORM COMPLETED BY _____		DATE _____ TIME _____	REASON FOR SURVEY _____

WEATHER CONDITIONS	Now _____ % storm (heavy rain) rain (steady rain) showers (intermittent) %cloud cover _____ clear/sunny	Past 24 hours _____ %	Has there been a heavy rain in the last 7 days? Yes No Air Temperature _____ °C Other _____
	SITE LOCATION/MAP Draw a map of the site and indicate the areas sampled (or attach a photograph)		
STREAM CHARACTERIZATION	Stream Subsystem Perennial Intermittent Tidal	Stream Type Coldwater Warmwater	Catchment Area _____ km ²
	Stream Origin Glacial Non-glacial montane Swamp and bog	Spring-fed Mixture of origins Other _____	

PHYSICAL CHARACTERIZATION/WATER QUALITY FIELD DATA SHEET (BACK)

WATERSHED FEATURES	Predominant Surrounding Landuse Forest Field/Pasture Agricultural Residential Commercial Industrial Other _____	Local Watershed NPS Pollution No evidence <input type="checkbox"/> Some potential sources Obvious sources Local Watershed Erosion None Moderate Heavy
RIPARIAN VEGETATION (18 meter buffer)	Indicate the dominant type and record the dominant species present Trees Shrubs Grasses Herbaceous Dominant species present _____	
INSTREAM FEATURES	Estimated Reach Length _____ m Estimated Stream Width _____ m Sampling Reach Area _____ m ² Area in km ² (m ² x1000) _____ km ² Estimated Stream Depth _____ m Surface Velocity _____ m/sec (at thalweg)	Canopy Cover Partly open Partly shaded Shaded High Water Mark _____ m Proportion of Reach Represented by Stream Morphology Types Riffle _____% Run _____% Pool _____% Channelized Yes No Dam Present Yes No
LARGE WOODY DEBRIS	LWD _____ m ² Density of LWD _____ m ² /km ² (LWD/ reach area)	
AQUATIC VEGETATION	Indicate the dominant type and record the dominant species present Rooted emergent Rooted submergent Rooted floating Free floating Floating Algae Attached Algae Dominant species present _____ Portion of the reach with aquatic vegetation ____ %	
WATER QUALITY (DS, US)	Temperature _____ °C Specific Conductance _____ Dissolved Oxygen _____ pH _____ Turbidity _____ WQ Instrument Used _____	Water Odors Normal/None Sewage Petroleum Chemical Fishy Other _____ Water Surface Oils Slick Sheen Globs Flecks None Other _____ Turbidity (if not measured) Clear <input type="checkbox"/> Slightly turbid Turbid Opaque Stained Other _____
SEDIMENT/SUBSTRATE	Odors Normal Sewage Petroleum Chemical Anaerobic None Other _____ Oils Absent Slight Moderate Profuse Deposits Sludge Sawdust Paper fiber Sand Relict shells Other _____ Looking at stones which are not deeply embedded, are the undersides black in color? Yes No	

INORGANIC SUBSTRATE COMPONENTS (should add up to 100%)			ORGANIC SUBSTRATE COMPONENTS (does not necessarily add up to 100%)		
Substrate Type	Diameter	% Composition in Sampling Reach	Substrate Type	Characteristic	% Composition in Sampling Area
Bedrock			Detritus	sticks, wood, coarse plant materials (CPOM)	
Boulder	> 256 mm (10")				
Cobble	64-256 mm (2.5"-10")		Muck-Mud	black, very fine organic (FPOM)	
Gravel	2-64 mm (0.1"-2.5")				
Sand	0.06-2mm (gritty)		Marl	grey, shell fragments	
Silt	0.004-0.06 mm				
Clay	< 0.004 mm (slick)				

HABITAT ASSESSMENT FIELD DATA SHEET - HG - USE ON ALL STREAMS (FRONT)

STREAM NAME	LOCATION	
STATION # _____ RIVERMILE _____	STREAM CLASS	
LAT _____ LONG _____	RIVER BASIN	
STORET #	AGENCY	
INVESTIGATORS		
FORM COMPLETED BY	DATE _____ TIME _____ AM PM	REASON FOR SURVEY

	Habitat Parameter	Condition Category			
		Optimal	Suboptimal	Marginal	Poor
Parameters to be evaluated in sampling reach	1. Epifaunal Substrate/ Available Cover	Greater than 70% of substrate favorable for epifaunal colonization and fish cover; mix of snags, submerged logs, undercut banks, cobble or other stable habitat and at stage to allow full colonization potential (i.e., logs/snags that are <u>not</u> new fall and <u>not</u> transient).	40-70% mix of stable habitat; well-suited for full colonization potential; adequate habitat for maintenance of populations; presence of additional substrate in the form of newfall, but not yet prepared for colonization (may rate at high end of scale).	20-40% mix of stable habitat; habitat availability less than desirable; substrate frequently disturbed or removed.	Less than 20% stable habitat; lack of habitat is obvious; substrate unstable or lacking.
	SCORE	20 19 18 17 16	15 14 13 12 11	10 9 8 7 6	5 4 3 2 1 0
	2. Embeddedness	Gravel, cobble, and boulder particles are 0-25% surrounded by fine sediment. Layering of cobble provides diversity of niche space.	Gravel, cobble, and boulder particles are 25-50% surrounded by fine sediment.	Gravel, cobble, and boulder particles are 50-75% surrounded by fine sediment.	Gravel, cobble, and boulder particles are more than 75% surrounded by fine sediment.
	SCORE	20 19 18 17 16	15 14 13 12 11	10 9 8 7 6	5 4 3 2 1 0
	3. Velocity/Depth Regime	All four velocity/depth regimes present (slow-deep, slow-shallow, fast-deep, fast-shallow). (Slow is < 0.3 m/s, deep is > 0.5 m.)	Only 3 of the 4 regimes present (if fast-shallow is missing, score lower than if missing other regimes).	Only 2 of the 4 habitat regimes present (if fast-shallow or slow-shallow are missing, score low).	Dominated by 1 velocity/depth regime (usually slow-deep).
	SCORE	20 19 18 17 16	15 14 13 12 11	10 9 8 7 6	5 4 3 2 1 0
	4. Sediment Deposition	Little or no enlargement of islands or point bars and less than 5% of the bottom affected by sediment deposition.	Some new increase in bar formation, mostly from gravel, sand or fine sediment; 5-30% of the bottom affected; slight deposition in pools.	Moderate deposition of new gravel, sand or fine sediment on old and new bars; 30-50% of the bottom affected; sediment deposits at obstructions, constrictions, and bends; moderate deposition of pools prevalent.	Heavy deposits of fine material, increased bar development; more than 50% of the bottom changing frequently; pools almost absent due to substantial sediment deposition.
	SCORE	20 19 18 17 16	15 14 13 12 11	10 9 8 7 6	5 4 3 2 1 0
	5. Channel Flow Status	Water reaches base of both lower banks, and minimal amount of channel substrate is exposed.	Water fills >75% of the available channel; or <25% of channel substrate is exposed.	Water fills 25-75% of the available channel, and/or riffle substrates are mostly exposed.	Very little water in channel and mostly present as standing pools.
	SCORE	20 19 18 17 16	15 14 13 12 11	10 9 8 7 6	5 4 3 2 1 0

HABITAT ASSESSMENT FIELD DATA SHEET—HIGH GRADIENT STREAMS (BACK)

Habitat Parameter	Condition Category																				
	Optimal					Suboptimal					Marginal					Poor					
6. Channel Alteration	Channelization or dredging absent or minimal; stream with normal pattern.					Some channelization present, usually in areas of bridge abutments; evidence of past channelization, i.e., dredging, (greater than past 20 yr) may be present, but recent channelization is not present.					Channelization may be extensive; embankments or shoring structures present on both banks; and 40 to 80% of stream reach channelized and disrupted.					Banks shored with gabion or cement; over 80% of the stream reach channelized and disrupted. Instream habitat greatly altered or removed entirely.					
SCORE	20	19	18	17	16	15	14	13	12	11	10	9	8	7	6	5	4	3	2	1	0
7. Frequency of Riffles (or bends)	Occurrence of riffles relatively frequent; ratio of distance between riffles divided by width of the stream <7:1 (generally 5 to 7); variety of habitat is key. In streams where riffles are continuous, placement of boulders or other large, natural obstruction is important.					Occurrence of riffles infrequent; distance between riffles divided by the width of the stream is between 7 to 15.					Occasional riffle or bend; bottom contours provide some habitat; distance between riffles divided by the width of the stream is between 15 to 25.					Generally all flat water or shallow riffles; poor habitat; distance between riffles divided by the width of the stream is a ratio of >25.					
SCORE	20	19	18	17	16	15	14	13	12	11	10	9	8	7	6	5	4	3	2	1	0
8. Bank Stability (score each bank)	Banks stable; evidence of erosion or bank failure absent or minimal; little potential for future problems. <5% of bank affected.					Moderately stable; infrequent, small areas of erosion mostly healed over. 5-30% of bank in reach has areas of erosion.					Moderately unstable; 30-60% of bank in reach has areas of erosion; high erosion potential during floods.					Unstable; many eroded areas; "raw" areas frequent along straight sections and bends; obvious bank sloughing; 60-100% of bank has erosional scars.					
Note: determine left or right side by facing downstream.																					
SCORE ____ (LB)	Left Bank	10	9			8	7	6			5	4	3			2	1	0			
SCORE ____ (RB)	Right Bank	10	9			8	7	6			5	4	3			2	1	0			
9. Vegetative Protection (score each bank)	More than 90% of the streambank surfaces and immediate riparian zone covered by native vegetation, including trees, understory shrubs, or nonwoody macrophytes; vegetative disruption through grazing or mowing minimal or not evident; almost all plants allowed to grow naturally.					70-90% of the streambank surfaces covered by native vegetation, but one class of plants is not well-represented; disruption evident but not affecting full plant growth potential to any great extent; more than one-half of the potential plant stubble height remaining.					50-70% of the streambank surfaces covered by vegetation; disruption obvious; patches of bare soil or closely cropped vegetation common; less than one-half of the potential plant stubble height remaining.					Less than 50% of the streambank surfaces covered by vegetation; disruption of streambank vegetation is very high; vegetation has been removed to 5 centimeters or less in average stubble height.					
SCORE ____ (LB)	Left Bank	10	9			8	7	6			5	4	3			2	1	0			
SCORE ____ (RB)	Right Bank	10	9			8	7	6			5	4	3			2	1	0			
10. Riparian Vegetative Zone Width (score each bank riparian zone)	Width of riparian zone >18 meters; human activities (i.e., parking lots, roadbeds, clear-cuts, lawns, or crops) have not impacted zone.					Width of riparian zone 12-18 meters; human activities have impacted zone only minimally.					Width of riparian zone 6-12 meters; human activities have impacted zone a great deal.					Width of riparian zone <6 meters; little or no riparian vegetation due to human activities.					
SCORE ____ (LB)	Left Bank	10	9			8	7	6			5	4	3			2	1	0			
SCORE ____ (RB)	Right Bank	10	9			8	7	6			5	4	3			2	1	0			

Total Score _____

BENTHIC MACROINVERTEBRATE FIELD DATA SHEET

STREAM NAME S-J60		LOCATION Wetzel County	
STATION # _____ RIVERMILE _____		STREAM CLASS Perennial	
LAT 39.47435 LONG -80.511825		RIVER BASIN Little Muskingum-Middle Island (05030201)	
STORET # _____		AGENCY WVDEP	
INVESTIGATORS RH MB		LOT NUMBER _____	
FORM COMPLETED BY MB		DATE 9-11-2021 TIME 1330	REASON FOR SURVEY Baseline Assessment

HABITAT TYPES	Indicate the percentage of each habitat type present <input checked="" type="checkbox"/> Cobble <u>55</u> % <input type="checkbox"/> Snags _____ % <input type="checkbox"/> Vegetated Banks _____ % <input type="checkbox"/> Sand _____ % <input type="checkbox"/> Submerged Macrophytes _____ % <input type="checkbox"/> Other (_____) _____ %
SAMPLE COLLECTION	Gear used <input type="checkbox"/> D-frame <input checked="" type="checkbox"/> kick-net <input type="checkbox"/> Other _____ How were the samples collected? <input type="checkbox"/> wading <input type="checkbox"/> from bank <input type="checkbox"/> from boat Indicate the number of jabs/kicks taken in each habitat type. <input checked="" type="checkbox"/> Cobble <u>4</u> <input type="checkbox"/> Snags _____ <input type="checkbox"/> Vegetated Banks _____ <input type="checkbox"/> Sand _____ <input type="checkbox"/> Submerged Macrophytes _____ <input type="checkbox"/> Other (_____) _____
GENERAL COMMENTS	DS: Temp: 18.5°C, SPC: 372.5 us/cm, DO: 9.43 mg/L, pH: 8.12, Turbidity: clear. US: Temp: 19.4°C, SPC: 371.8 us/cm, DO: 9.57 mg/L, pH: 8.28. Observations: fish and algae.

QUALITATIVE LISTING OF AQUATIC BIOTA

Indicate estimated abundance: 0 = Absent/Not Observed, 1 = Rare, 2 = Common, 3= Abundant, 4 = Dominant

Periphyton	0	1	2	3	4	Slimes	0	1	2	3	4
Filamentous Algae	0	1	2	3	4	Macroinvertebrates	0	1	2	3	4
Macrophytes	0	1	2	3	4	Fish	0	1	2	3	4

FIELD OBSERVATIONS OF MACROBENTHOS

Indicate estimated abundance: 0 = Absent/Not Observed, 1 = Rare (1-3 organisms), 2 = Common (3-9 organisms), 3= Abundant (>10 organisms), 4 = Dominant (>50 organisms)

Porifera	0	1	2	3	4	Anisoptera	0	1	2	3	4	Chironomidae	0	1	2	3	4
Hydrozoa	0	1	2	3	4	Zygoptera	0	1	2	3	4	Ephemeroptera	0	1	2	3	4
Platyhelminthes	0	1	2	3	4	Hemiptera	0	1	2	3	4	Trichoptera	0	1	2	3	4
Turbellaria	0	1	2	3	4	Coleoptera	0	1	2	3	4	Other	0	1	2	3	4
Hirudinea	0	1	2	3	4	Lepidoptera	0	1	2	3	4						
Oligochaeta	0	1	2	3	4	Sialidae	0	1	2	3	4						
Isopoda	0	1	2	3	4	Corydalidae	0	1	2	3	4						
Amphipoda	0	1	2	3	4	Tipulidae	0	1	2	3	4						
Decapoda	0	1	2	3	4	Empididae	0	1	2	3	4						
Gastropoda	0	1	2	3	4	Simuliidae	0	1	2	3	4						
Bivalvia	0	1	2	3	4	Tabinidae	0	1	2	3	4						
						Culcidae	0	1	2	3	4						

Sample ID 1

West Virginia Stream Condition Index (WVSCI)

ORG ID REIC2513

IMPORTANT: A blank screen below means that you have not entered the Benthic Identifications correctly! All individuals that are part of the 200-count subsample must be designated as such in the Sample Methodology column on the Benthic ID forms (Family or Genus)!

WVSCI Family	Count	TV	0
Baetidae	18	4	
Ceratopogonidae	2	6	
Chironomidae	29	6	
Elmidae	8	4	
Empididae	9	6	
Gomphidae	2	3	
Heptageniidae	11	4	
Hydropsychidae	53	5	
Isonychiidae	8	2	
Leptophlebiidae	1	2	
Perlidae	1	1	
Philopotamidae	6	3	
Polycentropodidae	1	6	
Psephenidae	51	4	
Tabanidae	1	6	
Tipulidae	5	3	

WVSCI Metrics and Scores

ORG ID REIC2513

	Metrics	BSV	WVSCI Standardized Score w/ BSV 1996-2001
% 2 Dominant Taxa (Family)	50.49	37.3	78.97
% Chironomidae	14.08	1.7	87.41
% EPT (Family)	48.06	89.3	53.82
HBI (Family)	4.50	2.61	74.42
# EPT Taxa (Family)	8	13	61.54
# Total Taxa (Family)	16	22	72.73
WVSCI Score w/ BSV 1996-2001			71.48

Benthic Density

# of grids Picked	4	Total # of grids	100
-------------------	---	------------------	-----

Total IBI Individuals	206
-----------------------	-----

# of Organisms per Grid	51.50
-------------------------	-------

Organisms per Sq cm	0.5150
---------------------	--------

Organisms per Sq m	5150.00
--------------------	---------

WVSCI Category	Unimpaired-Good
----------------	-----------------

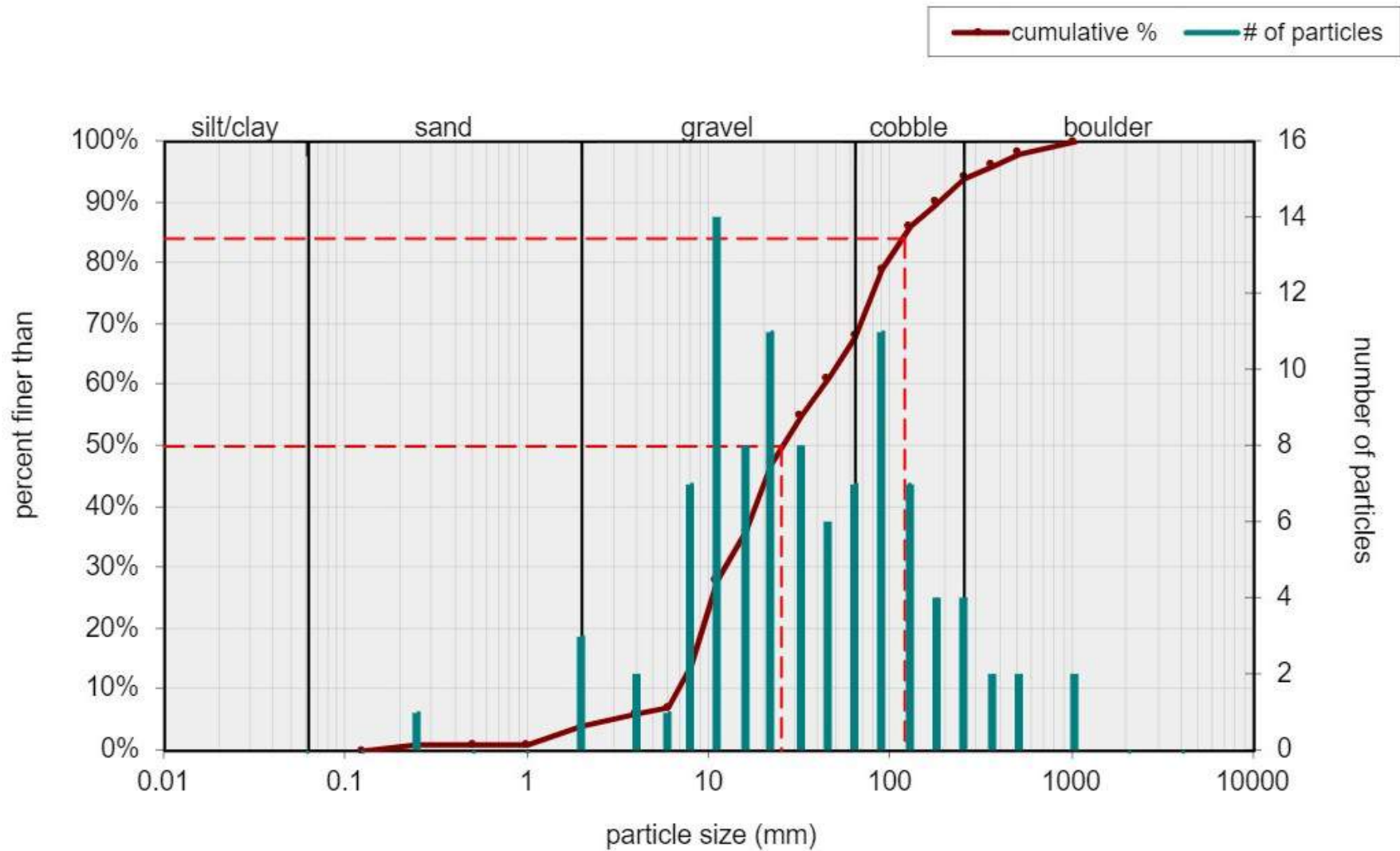
WVSCI Thresholds	
Unimpaired = >68.00	
Gray Zone = 60.61 to 68.00	
Impaired = <60.61	

WOLMAN PEBBLE COUNT FORM

County Wetzel Basin 05030201 Impact 54.27 m
 Stream Name S-J60
 HUC Code
 USGS Quad
 Survey Date 8/27/2021
 Surveyors: JR MB
 Type: Bankfull Channel

PEBBLE COUNT							
Inches	PARTICLE	Millimeters		Particle Count	Total #	Item %	% Cum
	Silt/Clay	< .062	S/C		0	0.00	0.00
	Very Fine	.062-.125	S A N D		0	0.00	0.00
	Fine	.125-.25			1	1.00	1.00
	Medium	.25-.5			0	0.00	1.00
	Coarse	.50-1.0			0	0.00	1.00
.04-.08	Very Coarse	1.0-2			3	3.00	4.00
.08 - .16	Very Fine	2 - 4		G R A V E L		2	2.00
.16 - .22	Fine	4 - 5.7			1	1.00	7.00
.22 - .31	Fine	5.7 - 8			7	7.00	14.00
.31 - .44	Medium	8 - 11.3			14	14.00	28.00
.44 - .63	Medium	11.3 - 16			8	8.00	36.00
.63 - .89	Coarse	16 - 22.6			11	11.00	47.00
.89 - 1.26	Coarse	22.6 - 32			8	8.00	55.00
1.26 - 1.77	Vry Coarse	32 - 45			6	6.00	61.00
1.77 - 2.5	Vry Coarse	45 - 64			7	7.00	68.00
2.5 - 3.5	Small	64 - 90	C O B B L E			11	11.00
3.5 - 5.0	Small	90 - 128			7	7.00	86.00
5.0 - 7.1	Large	128 - 180			4	4.00	90.00
7.1 - 10.1	Large	180 - 256			4	4.00	94.00
10.1 - 14.3	Small	256 - 362	B O U L D E R		2	2.00	96.00
14.3 - 20	Small	362 - 512			2	2.00	98.00
20 - 40	Medium	512 - 1024			2	2.00	100.00
40 - 80	Large	1024 - 2048			0	0.00	100.00
80 - 160	Vry Large	2048 - 4096			0	0.00	100.00
	Bedrock		BDRK		0	0.00	100.00
				Totals:	100		
Total Tally:							

Bankfull Channel Pebble Count, S-J60/Sams Run



Size (mm)	
D16	8.4
D35	15
D50	25
D65	55
D84	120
D95	300

Size Distribution	
mean	31.7
dispersion	3.9
skewness	0.10

Type	
silt/clay	0%
sand	4%
gravel	64%
cobble	26%
boulder	6%

