

# Baseline Assessment – Stream Attributes

## Reach S-A92 (Pipeline ROW) Ephemeral Spread C Webster County, West Virginia

Data	Included
Photos	✓
SWVM Form	Stream was surveyed on 09/10/21. The surrounding substrate was uniform, with no signs of a riparian zone There was zero evidence of stream beds or ephemeral flow. After investigation and review, it was concluded that S-A92 no longer exists. (Please reference photos)
FCI Calculator and HGM Form	
RBP Physical Characteristics Form	
Water Quality Data	
RBP Habitat Form	
RBP Benthic Form	
Benthic Identification Sheet	
Wolman Pebble Count	
Reference Reach Software Pebble Count Data	
Longitudinal Profile and Cross Sections	

# Spread C Stream S-A92 (Pipeline ROW) Webster County



Photo Type: DS, US View  
Location, Orientation, Photographer Initials: Downstream at LOD looking W upstream, HK  
Latitude: 38.556658, Longitude: -80.535607

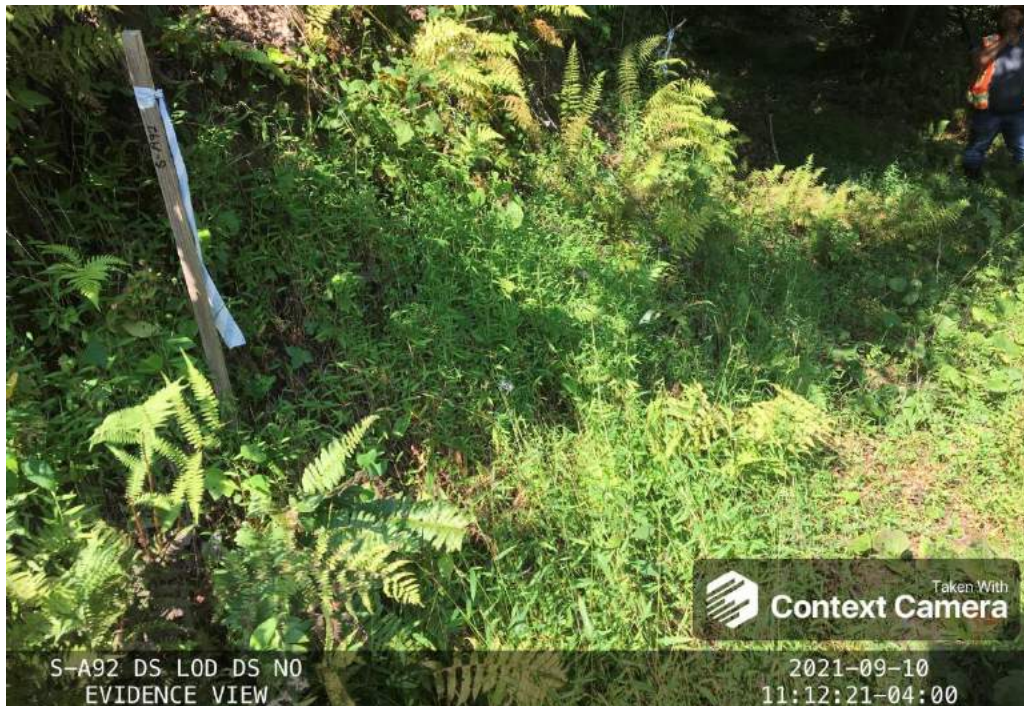


Photo Type: DS, DS View  
Location, Orientation, Photographer Initials: Downstream at LOD looking E downstream, HK  
Latitude: 38.556658, Longitude: -80.535607

## Spread C Stream S-A92 (Pipeline ROW) Webster County

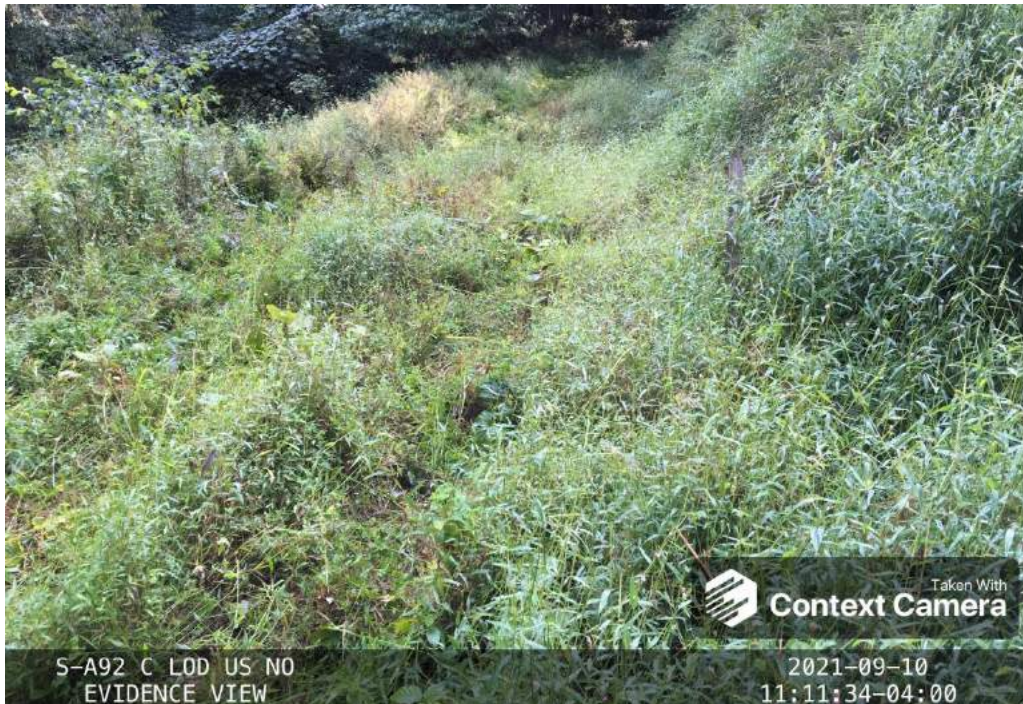


Photo Type: US View from Center

Location, Orientation, Photographer Initials: On thalweg at pipe centerline looking W Upstream, HK  
Latitude: 38.556658, Longitude: -80.535607



Photo Type: DS View from Center

Location, Orientation, Photographer Initials: On thalweg at pipe centerline looking E Downstream, HK  
Latitude: 38.556658, Longitude: -80.535607

## Spread C Stream S-A92 (Pipeline ROW) Webster County



Photo Type: US, US VIEW

Location, Orientation, Photographer Initials: Upstream at LOD looking W upstream, HK  
Latitude: 38.556658, Longitude: -80.535607

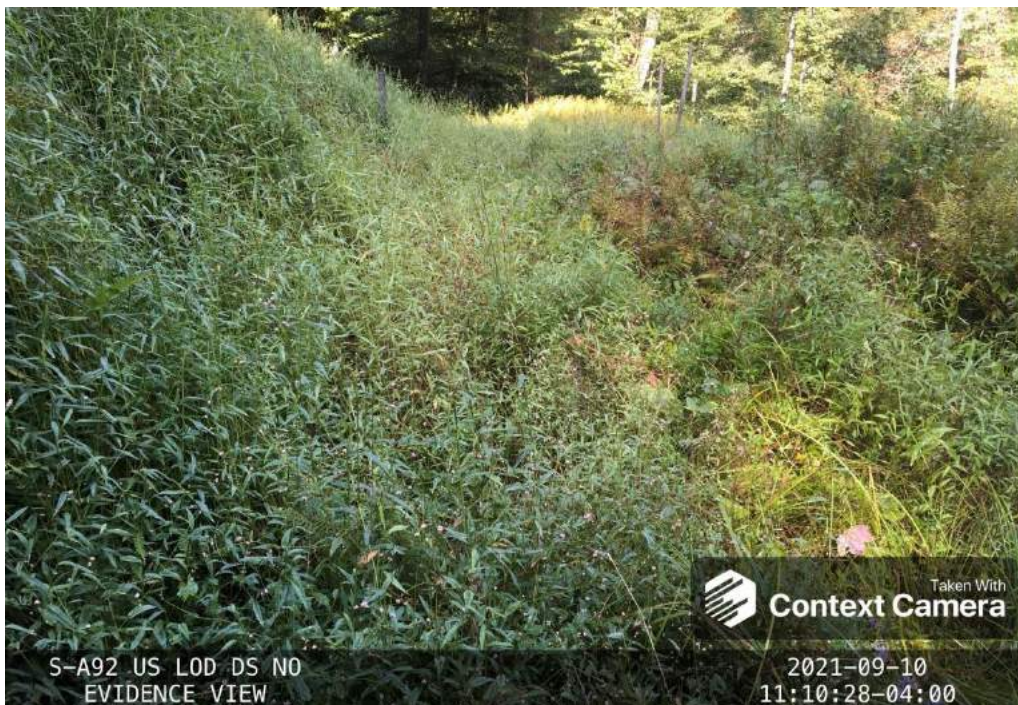


Photo Type: US, DS VIEW

Location, Orientation, Photographer Initials: Upstream at LOD looking W downstream, HK  
Latitude: 38.556658, Longitude: -80.535607