

# Baseline Assessment – Stream Attributes

## Reach S-A106 (Timber Mat Crossing) Ephemeral Spread B Harrison County, West Virginia

Data	Included
Photos	✓
SWVM Form	Proxy Stream Information Utilized; Refer to Master Stream Summary Table.
FCI Calculator and HGM Form	
RBP Physical Characteristics Form	
Water Quality Data	
RBP Habitat Form	
RBP Benthic Form	
Benthic Identification Sheet	
Wolman Pebble Count	
Reference Reach Software Pebble Count Data	
Longitudinal Profile and Cross Sections	

# Spread B Stream S-A106 (Timber Mat Crossing) Harrison County



Photo Type: DS, US View  
Location, Orientation, Photographer Initials: Downstream Edge of ROW, Upstream View,  
Lat: 39.168435 Long: -80.577625

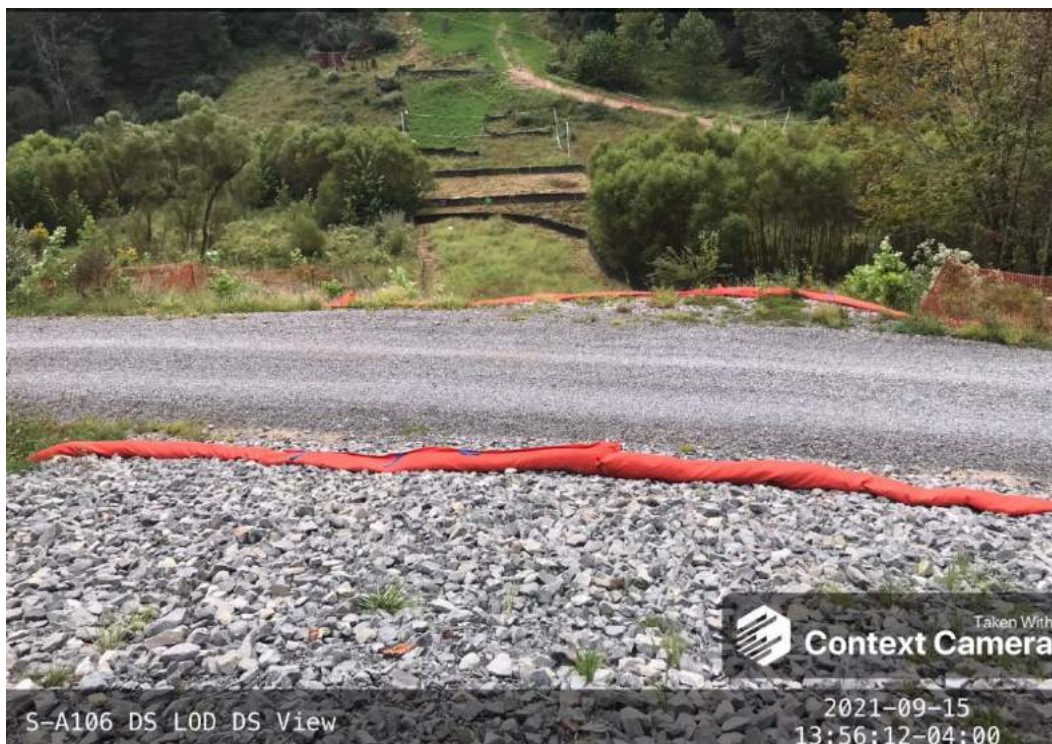


Photo Type: DS, DS View  
Location, Orientation, Photographer Initials: Downstream Edge of ROW, Upstream View,  
Lat: 39.168435 Long: -80.577625

# Spread B Stream S-A106 (Timber Mat Crossing) Harrison County



Photo Type: US View at Center  
Location, Orientation, Photographer Initials: Downstream Edge of ROW, Upstream View,  
Lat: 39.168435 Long: -80.577625



Photo Type: DS View at Center  
Location, Orientation, Photographer Initials: Downstream Edge of ROW, Upstream View,  
Lat: 39.168435 Long: -80.577625

# Spread B Stream S-A106 (Timber Mat Crossing) Harrison County



S-A106 US LOD US View

2021-09-15  
13:52:07-04:00

Photo Type: US, US View  
Location, Orientation, Photographer Initials: Downstream Edge of ROW, Upstream View,  
Lat: 39.168435 Long: -80.577625



S-A106 US LOD DS View

2021-09-15  
13:52:25-04:00

Photo Type: US, DS View  
Location, Orientation, Photographer Initials: Downstream Edge of ROW, Upstream View,  
Lat: 39.168435 Long: -80.577625