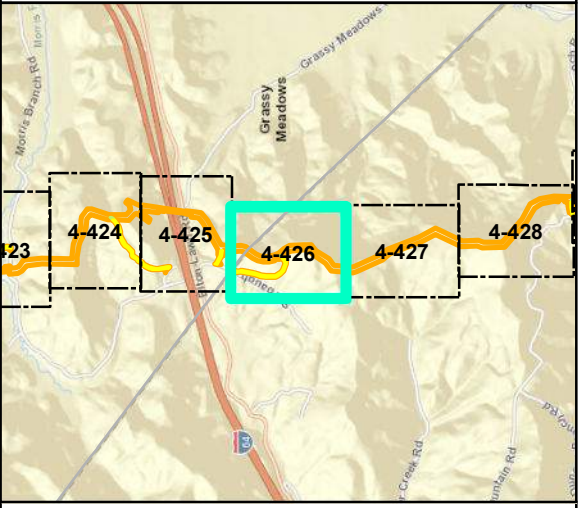
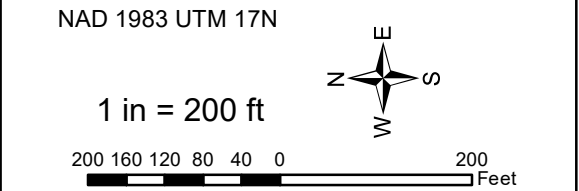




- Legend**
- | | |
|-------------------------------|--------------------------|
| ○ Milepost | Stream |
| --- Alignment Centerline | --- Intermittent |
| --- Access Road Temporary LOD | --- Perennial |
| --- Access Road Permanent LOD | --- Ephemeral |
| Permanent Facility | ▨ Pond |
| Limit of Disturbance | Wetland |
| ■ Bore Pit | ▨ Palustrine Forested |
| == Culvert | ▨ Palustrine Emergent |
| | ▨ Palustrine Scrub-Shrub |

Note:
Refer to Table 2 (Streams) and Table 3 (Wetlands) in the Individual Permit Application for information on resource impacts.



Mountain Valley Pipeline Project



Detail Map Individual Permit Application

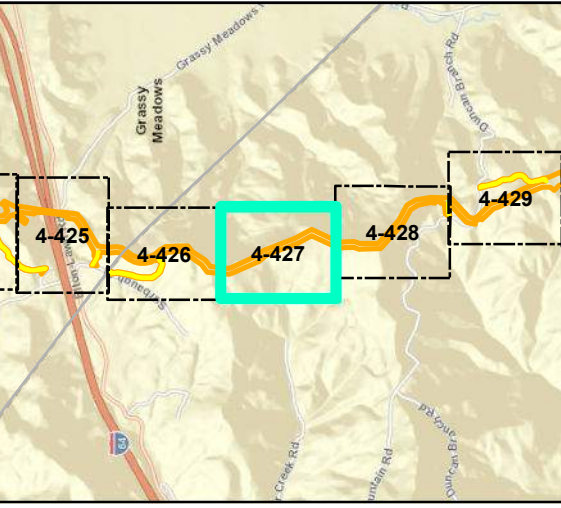
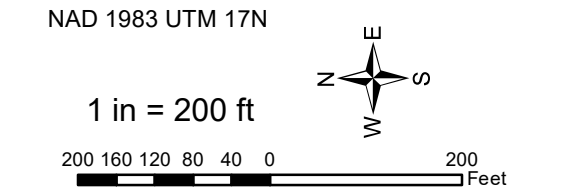
Figure 4-426
Summers County, West Virginia
November 2022

Data Sources: WV GIS Technical Center Imagery Service 2020
Note: Map insets are at a scale of 1 inch = 50 feet unless otherwise noted.



- Legend**
- | | |
|-----------------------------|--------------------------|
| ○ Milepost | Stream |
| — Alignment Centerline | — Intermittent |
| — Access Road Temporary LOD | — Perennial |
| — Access Road Permanent LOD | — Ephemeral |
| Permanent Facility | ▨ Pond |
| Limit of Disturbance | Wetland |
| ■ Bore Pit | ▨ Palustrine Forested |
| — Culvert | ▨ Palustrine Emergent |
| | ▨ Palustrine Scrub-Shrub |

Note:
Refer to Table 2 (Streams) and Table 3 (Wetlands) in the Individual Permit Application for information on resource impacts.



Mountain Valley Pipeline Project



Detail Map Individual Permit Application

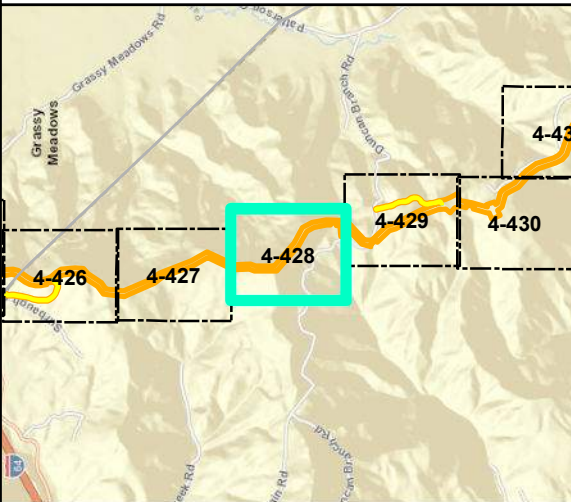
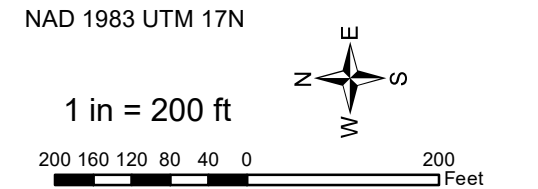
Figure 4-427
Summers County, West Virginia
November 2022

Data Sources: WV GIS Technical Center Imagery Service 2020
Note: Map insets are at a scale of 1 inch = 50 feet unless otherwise noted.



- Legend**
- | | |
|-----------------------------|--------------------------|
| ○ Milepost | Stream |
| --- Alignment Centerline | --- Intermittent |
| □ Access Road Temporary LOD | --- Perennial |
| □ Access Road Permanent LOD | --- Ephemeral |
| □ Permanent Facility | ▨ Pond |
| ▭ Limit of Disturbance | Wetland |
| ■ Bore Pit | ▨ Palustrine Forested |
| — Culvert | ▨ Palustrine Emergent |
| | ▨ Palustrine Scrub-Shrub |

Note:
Refer to Table 2 (Streams) and Table 3 (Wetlands) in the Individual Permit Application for information on resource impacts.



Mountain Valley Pipeline Project

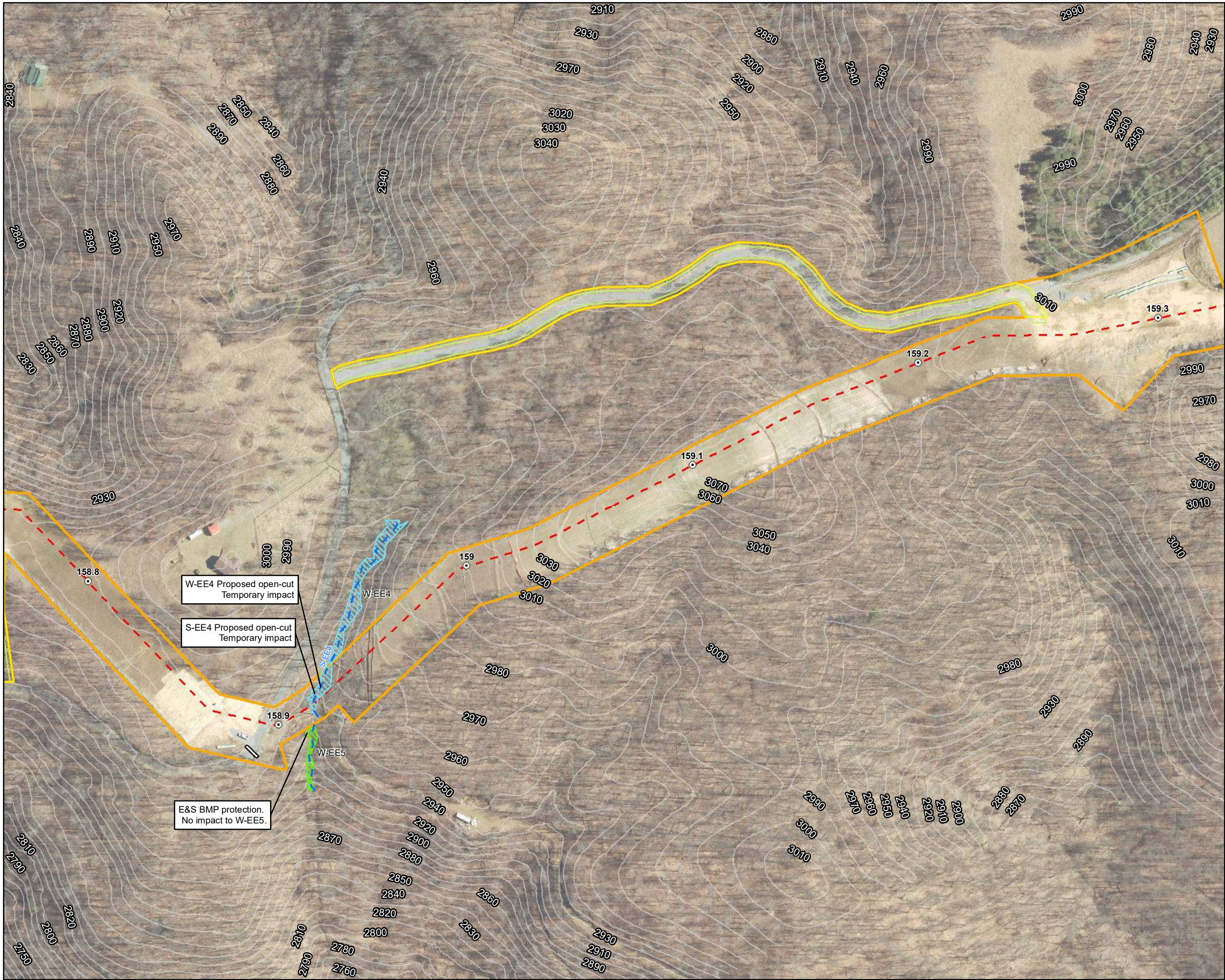


Detail Map Individual Permit Application

Figure 4-428
Summers County, West Virginia

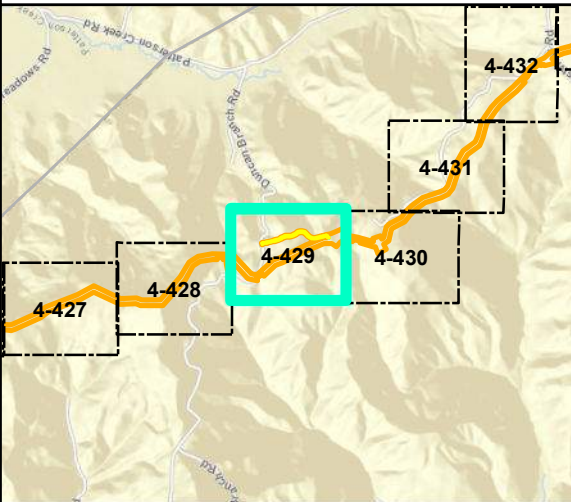
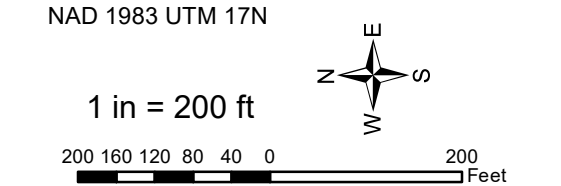
November 2022

Data Sources: WV GIS Technical Center Imagery Service 2020
Note: Map insets are at a scale of 1 inch = 50 feet unless otherwise noted.



- Legend**
- | | |
|-----------------------------|--------------------------|
| ○ Milepost | Stream |
| --- Alignment Centerline | --- Intermittent |
| □ Access Road Temporary LOD | --- Perennial |
| □ Access Road Permanent LOD | --- Ephemeral |
| □ Permanent Facility | ▨ Pond |
| □ Limit of Disturbance | Wetland |
| ■ Bore Pit | ▨ Palustrine Forested |
| — Culvert | ▨ Palustrine Emergent |
| | ▨ Palustrine Scrub-Shrub |

Note:
Refer to Table 2 (Streams) and Table 3 (Wetlands) in the Individual Permit Application for information on resource impacts.



Mountain Valley Pipeline Project



Detail Map Individual Permit Application

Figure 4-429
Summers County, West Virginia

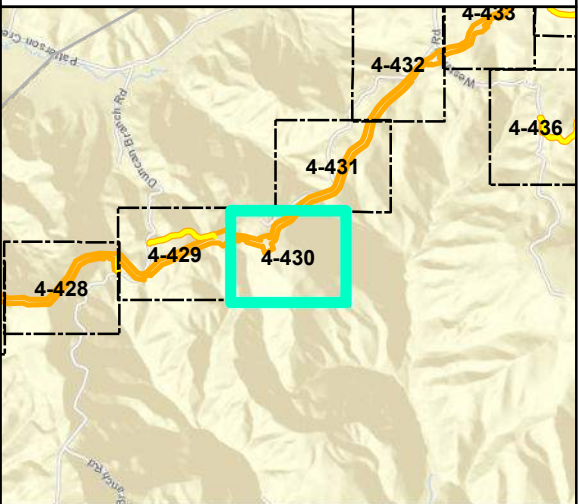
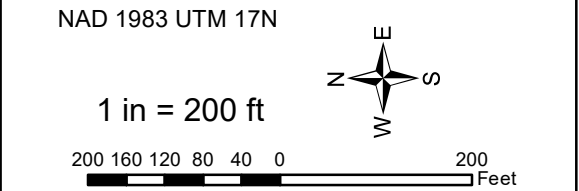
November 2022

Data Sources: WV GIS Technical Center Imagery Service 2020
Note: Map insets are at a scale of 1 inch = 50 feet unless otherwise noted.



- Legend**
- | | |
|---------------------------|------------------------|
| Milepost | Stream |
| Alignment Centerline | Intermittent |
| Access Road Temporary LOD | Perennial |
| Access Road Permanent LOD | Ephemeral |
| Permanent Facility | Pond |
| Limit of Disturbance | Wetland |
| Bore Pit | Palustrine Forested |
| Culvert | Palustrine Emergent |
| | Palustrine Scrub-Shrub |

Note:
Refer to Table 2 (Streams) and Table 3 (Wetlands) in the Individual Permit Application for information on resource impacts.



Mountain Valley Pipeline Project



**Detail Map
Individual Permit Application**

Figure 4-430
Summers County, West Virginia

November 2022

Data Sources: WV GIS Technical Center Imagery Service 2020
Note: Map insets are at a scale of 1 inch = 50 feet unless otherwise noted.



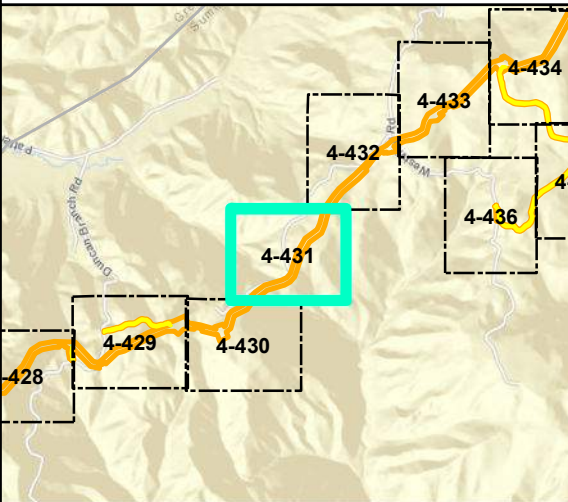
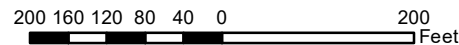
Legend

- | | |
|-----------------------------|--------------------------|
| ○ Milepost | Stream |
| - - - Alignment Centerline | - - - Intermittent |
| □ Access Road Temporary LOD | - · - · - Perennial |
| □ Access Road Permanent LOD | — Ephemeral |
| □ Permanent Facility | ▨ Pond |
| ▭ Limit of Disturbance | Wetland |
| ■ Bore Pit | ▨ Palustrine Forested |
| — Culvert | ▨ Palustrine Emergent |
| | ▨ Palustrine Scrub-Shrub |

Note:
Refer to Table 2 (Streams) and Table 3 (Wetlands) in the Individual Permit Application for information on resource impacts.

NAD 1983 UTM 17N

1 in = 200 ft



Mountain Valley Pipeline Project



**Detail Map
Individual Permit Application**

Figure 4-431
Summers County, West Virginia

November 2022

Data Sources: WV GIS Technical Center Imagery Service 2020
Note: Map insets are at a scale of 1 inch = 50 feet unless otherwise noted.



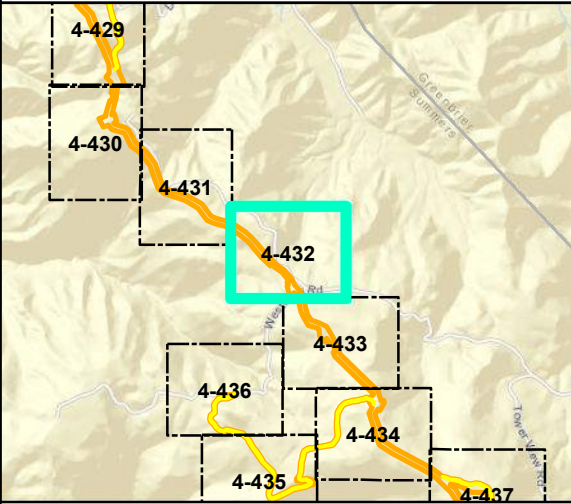
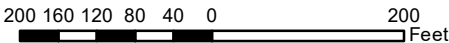
Legend

- | | |
|-----------------------------|--------------------------|
| ○ Milepost | Stream |
| - - - Alignment Centerline | - - - Intermittent |
| □ Access Road Temporary LOD | - · - · - Perennial |
| □ Access Road Permanent LOD | — Ephemeral |
| □ Permanent Facility | ▨ Pond |
| □ Limit of Disturbance | Wetland |
| ■ Bore Pit | ▨ Palustrine Forested |
| — Culvert | ▨ Palustrine Emergent |
| | ▨ Palustrine Scrub-Shrub |

Note:
Refer to Table 2 (Streams) and Table 3 (Wetlands) in the Individual Permit Application for information on resource impacts.

NAD 1983 UTM 17N

1 in = 200 ft



Mountain Valley Pipeline Project

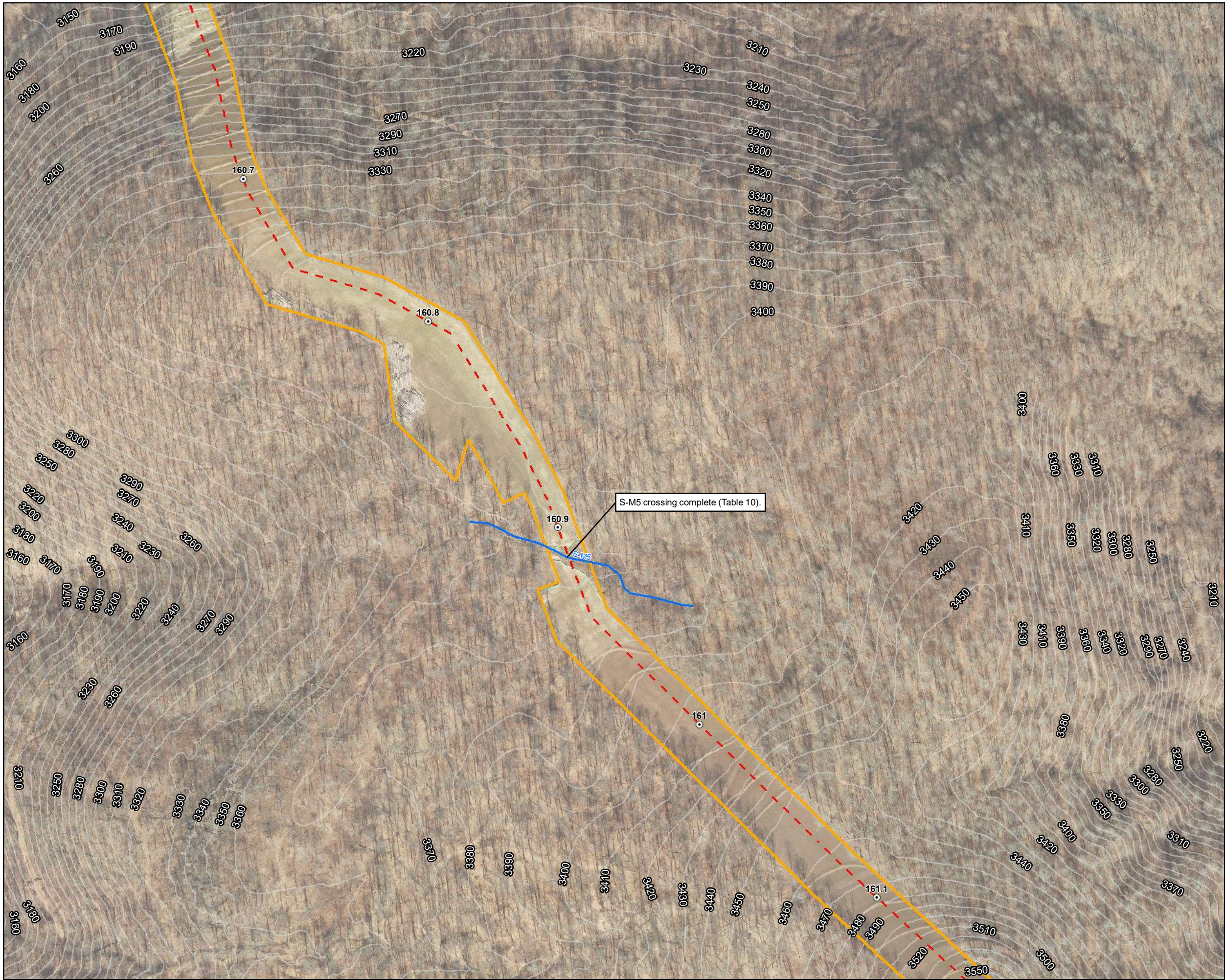


**Detail Map
Individual Permit Application**

Figure 4-432
Summers County, West Virginia

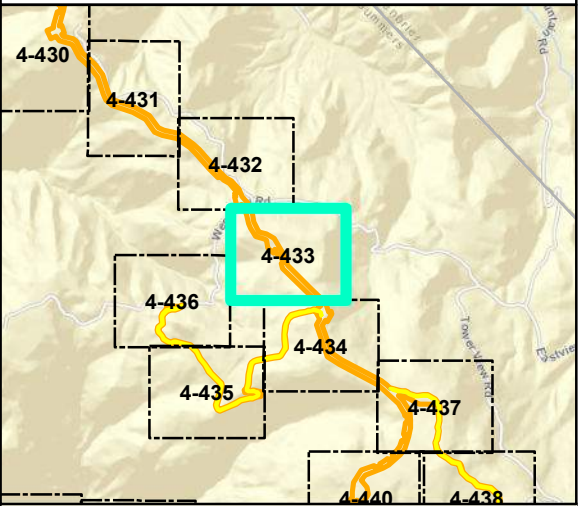
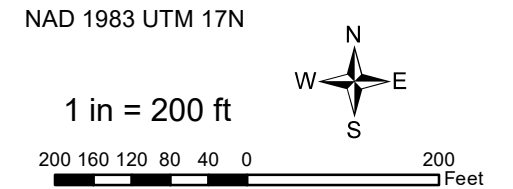
November 2022

Data Sources: WV GIS Technical Center Imagery Service 2020
Note: Map insets are at a scale of 1 inch = 50 feet unless otherwise noted.



- Legend**
- | | |
|---------------------------|------------------------|
| Milepost | Stream |
| Alignment Centerline | Intermittent |
| Access Road Temporary LOD | Perennial |
| Access Road Permanent LOD | Ephemeral |
| Permanent Facility | Pond |
| Limit of Disturbance | Wetland |
| Bore Pit | Palustrine Forested |
| Culvert | Palustrine Emergent |
| | Palustrine Scrub-Shrub |

Note:
Refer to Table 2 (Streams) and Table 3 (Wetlands) in the Individual Permit Application for information on resource impacts.



Mountain Valley Pipeline Project



Detail Map Individual Permit Application

Figure 4-433
Summers County, West Virginia

November 2022

Data Sources: WV GIS Technical Center Imagery Service 2020
Note: Map insets are at a scale of 1 inch = 50 feet unless otherwise noted.



Legend

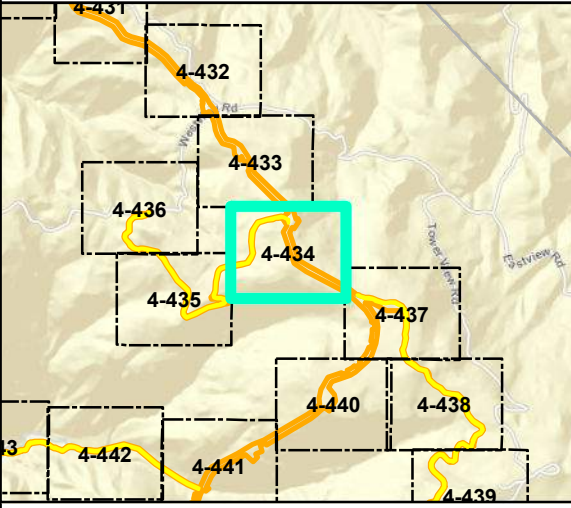
○ Milepost	Stream
- - - Alignment Centerline	- - - Intermittent
□ Access Road Temporary LOD	- · - · - Perennial
□ Access Road Permanent LOD	— Ephemeral
□ Permanent Facility	▨ Pond
□ Limit of Disturbance	Wetland
■ Bore Pit	▨ Palustrine Forested
— Culvert	▨ Palustrine Emergent
	▨ Palustrine Scrub-Shrub

Note:
Refer to Table 2 (Streams) and Table 3 (Wetlands) in the Individual Permit Application for information on resource impacts.

NAD 1983 UTM 17N

1 in = 200 ft

200 160 120 80 40 0 200 Feet



Mountain Valley Pipeline Project

Detail Map
Individual Permit Application

Figure 4-434
Summers County, West Virginia

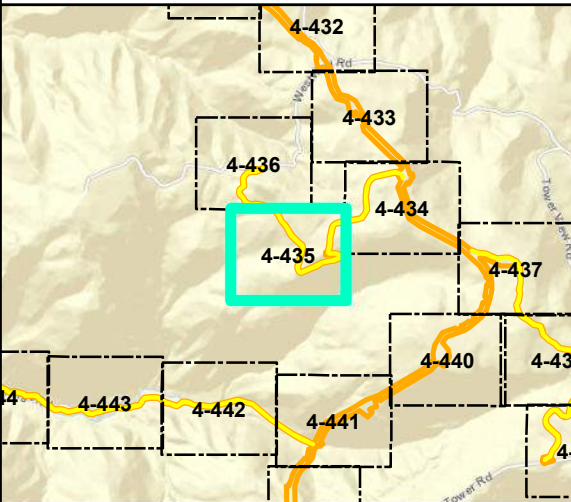
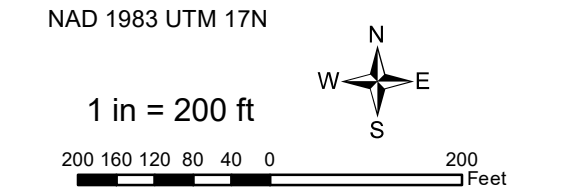
November 2022

Data Sources: WV GIS Technical Center Imagery Service 2020
Note: Map insets are at a scale of 1 inch = 50 feet unless otherwise noted.



- Legend**
- | | |
|-----------------------------|--------------------------|
| ○ Milepost | Stream |
| --- Alignment Centerline | --- Intermittent |
| □ Access Road Temporary LOD | --- Perennial |
| □ Access Road Permanent LOD | --- Ephemeral |
| □ Permanent Facility | ▨ Pond |
| □ Limit of Disturbance | Wetland |
| ■ Bore Pit | ▨ Palustrine Forested |
| ▬ Culvert | ▨ Palustrine Emergent |
| | ▨ Palustrine Scrub-Shrub |

Note:
Refer to Table 2 (Streams) and Table 3 (Wetlands) in the Individual Permit Application for information on resource impacts.



Mountain Valley Pipeline Project



Detail Map Individual Permit Application

Figure 4-435
Summers County, West Virginia

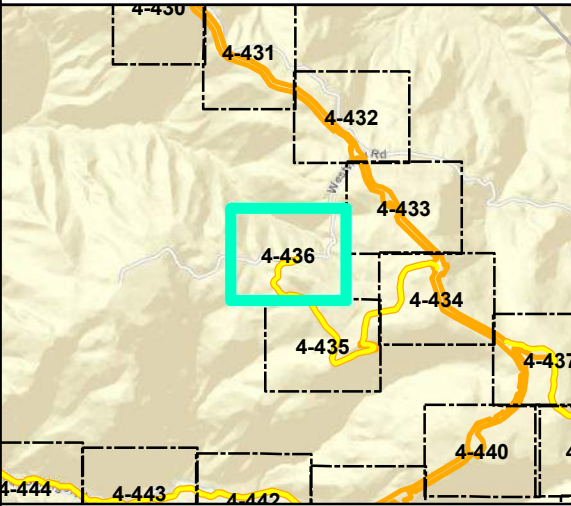
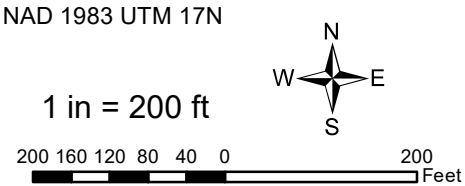
November 2022

Data Sources: WV GIS Technical Center Imagery Service 2020
Note: Map insets are at a scale of 1 inch = 50 feet unless otherwise noted.



- Legend**
- | | |
|---------------------------|------------------------|
| Milepost | Stream |
| Alignment Centerline | Intermittent |
| Access Road Temporary LOD | Perennial |
| Access Road Permanent LOD | Ephemeral |
| Permanent Facility | Pond |
| Limit of Disturbance | Wetland |
| Bore Pit | Palustrine Forested |
| Culvert | Palustrine Emergent |
| | Palustrine Scrub-Shrub |

Note:
Refer to Table 2 (Streams) and Table 3 (Wetlands) in the Individual Permit Application for information on resource impacts.



Mountain Valley Pipeline Project



**Detail Map
Individual Permit Application**

Figure 4-436
Summers County, West Virginia

November 2022

Data Sources: WV GIS Technical Center Imagery Service 2020
Note: Map insets are at a scale of 1 inch = 50 feet unless otherwise noted.



Legend

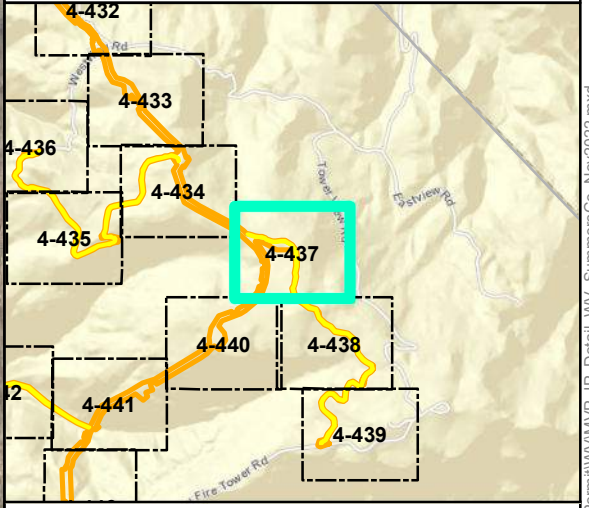
○ Milepost	Stream
- - - Alignment Centerline	- - - Intermittent
□ Access Road Temporary LOD	- · - · - Perennial
□ Access Road Permanent LOD	— Ephemeral
□ Permanent Facility	▨ Pond
□ Limit of Disturbance	Wetland
■ Bore Pit	▨ Palustrine Forested
— Culvert	▨ Palustrine Emergent
	▨ Palustrine Scrub-Shrub

Note:
Refer to Table 2 (Streams) and Table 3 (Wetlands) in the Individual Permit Application for information on resource impacts.

NAD 1983 UTM 17N

1 in = 200 ft

200 160 120 80 40 0 200 Feet



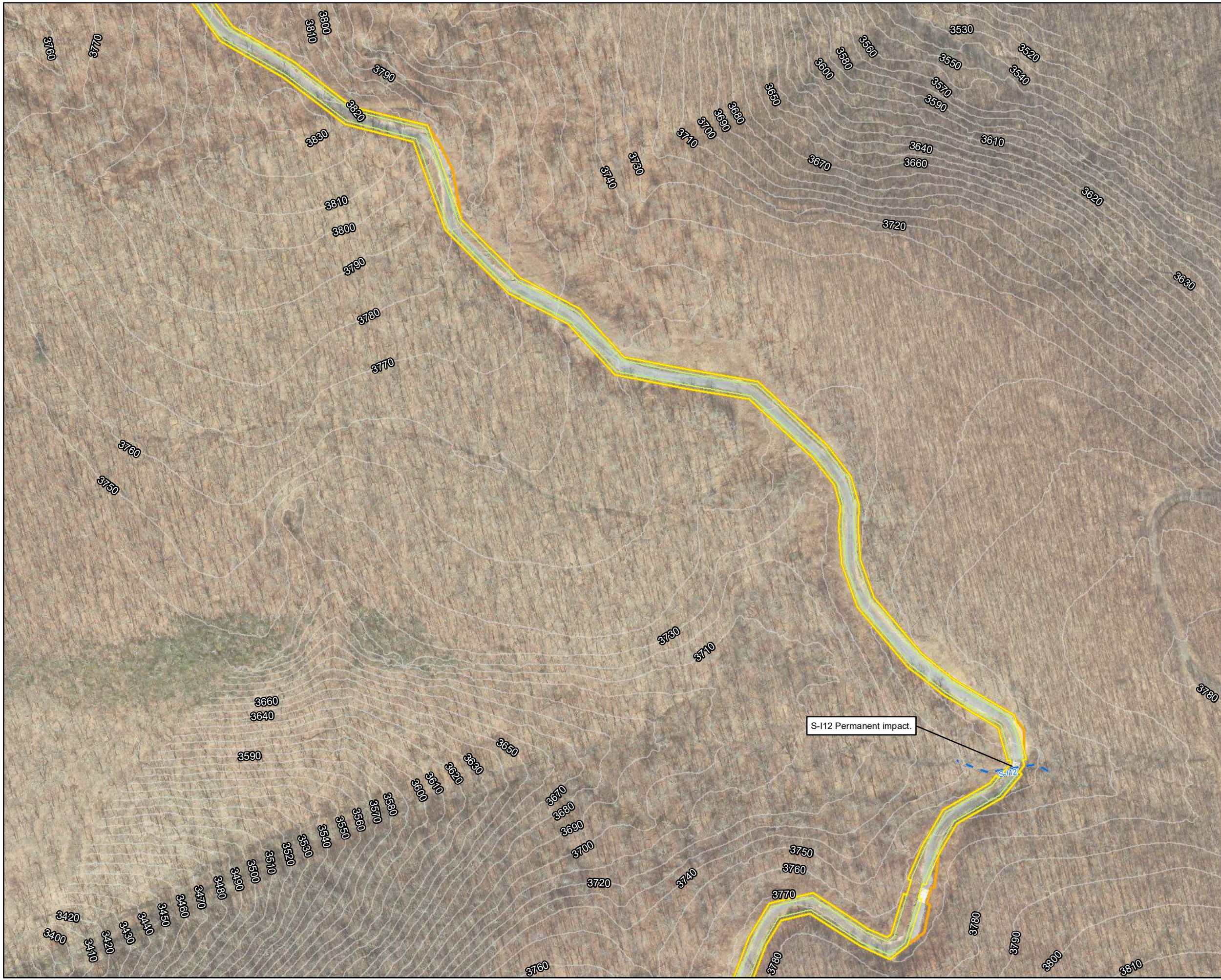
Mountain Valley Pipeline Project



**Detail Map
Individual Permit Application**

Figure 4-437
Summers County, West Virginia
November 2022

Data Sources: WV GIS Technical Center Imagery Service 2020
Note: Map insets are at a scale of 1 inch = 50 feet unless otherwise noted.



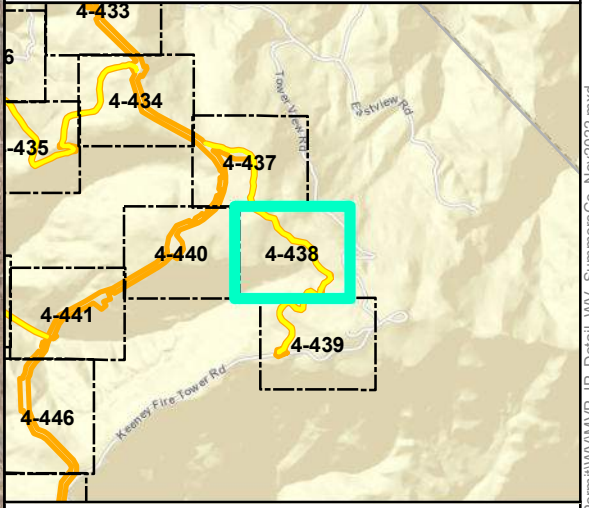
Legend

Milepost	Stream
Alignment Centerline	Intermittent
Access Road Temporary LOD	Perennial
Access Road Permanent LOD	Ephemeral
Permanent Facility	Pond
Limit of Disturbance	Wetland
Bore Pit	Palustrine Forested
Culvert	Palustrine Emergent
	Palustrine Scrub-Shrub

Note:
Refer to Table 2 (Streams) and Table 3 (Wetlands) in the Individual Permit Application for information on resource impacts.

NAD 1983 UTM 17N

1 in = 200 ft



Mountain Valley Pipeline Project

Detail Map
Individual Permit Application

Figure 4-438
Summers County, West Virginia
November 2022

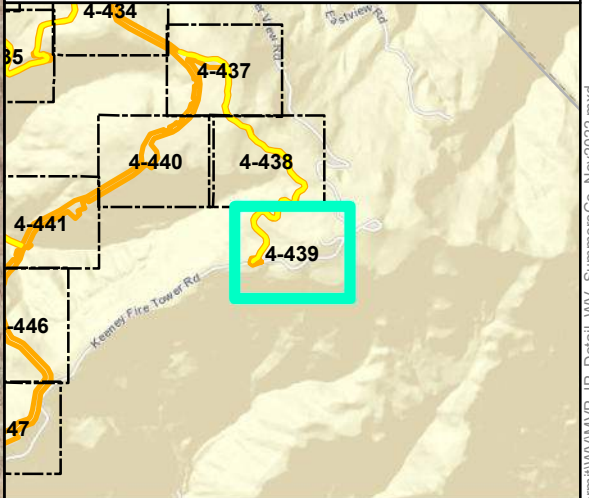
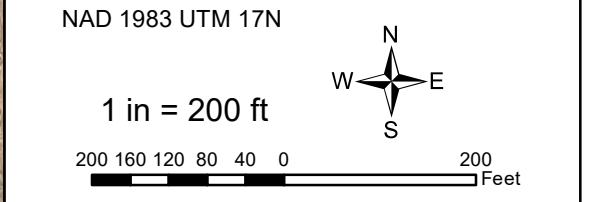
Data Sources: WV GIS Technical Center Imagery Service 2020
Note: Map insets are at a scale of 1 inch = 50 feet unless otherwise noted.

Document Path: P:\GIS\REQ\MVP\MapDocs\Wetlands\Individual_Permit\WV_MVP_IP_Detail_WV_SummersCo_Nov2022.mxd



- Legend**
- | | |
|-----------------------------|--------------------------|
| ○ Milepost | Stream |
| --- Alignment Centerline | --- Intermittent |
| □ Access Road Temporary LOD | --- Perennial |
| □ Access Road Permanent LOD | --- Ephemeral |
| □ Permanent Facility | ▨ Pond |
| □ Limit of Disturbance | Wetland |
| ■ Bore Pit | ▨ Palustrine Forested |
| ▬ Culvert | ▨ Palustrine Emergent |
| | ▨ Palustrine Scrub-Shrub |

Note:
Refer to Table 2 (Streams) and Table 3 (Wetlands) in the Individual Permit Application for information on resource impacts.



Mountain Valley Pipeline Project



Detail Map Individual Permit Application

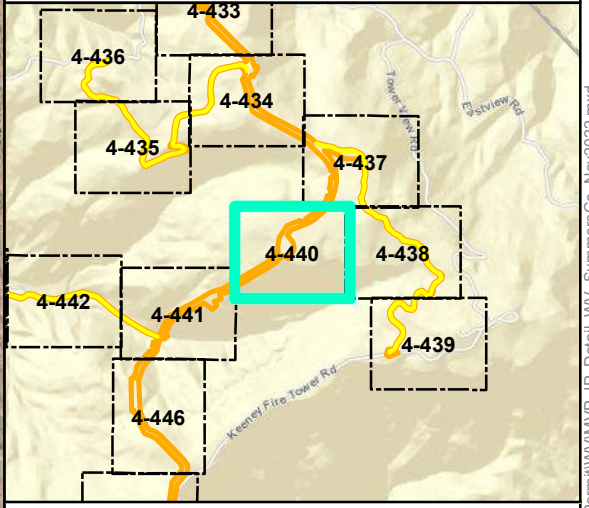
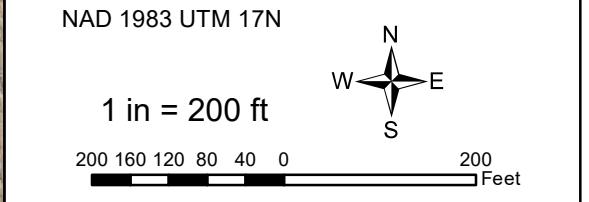
Figure 4-439
Summers County, West Virginia
November 2022

Data Sources: WV GIS Technical Center Imagery Service 2020
Note: Map insets are at a scale of 1 inch = 50 feet unless otherwise noted.



- Legend**
- | | |
|-----------------------------|--------------------------|
| ○ Milepost | Stream |
| - - - Alignment Centerline | - - - Intermittent |
| □ Access Road Temporary LOD | - · · - Perennial |
| □ Access Road Permanent LOD | — Ephemeral |
| □ Permanent Facility | ▨ Pond |
| □ Limit of Disturbance | Wetland |
| ■ Bore Pit | ▨ Palustrine Forested |
| — Culvert | ▨ Palustrine Emergent |
| | ▨ Palustrine Scrub-Shrub |

Note:
Refer to Table 2 (Streams) and Table 3 (Wetlands) in the Individual Permit Application for information on resource impacts.



Mountain Valley Pipeline Project



**Detail Map
Individual Permit Application**

Figure 4-440
Summers County, West Virginia
November 2022

Data Sources: WV GIS Technical Center Imagery Service 2020
Note: Map insets are at a scale of 1 inch = 50 feet unless otherwise noted.



Legend

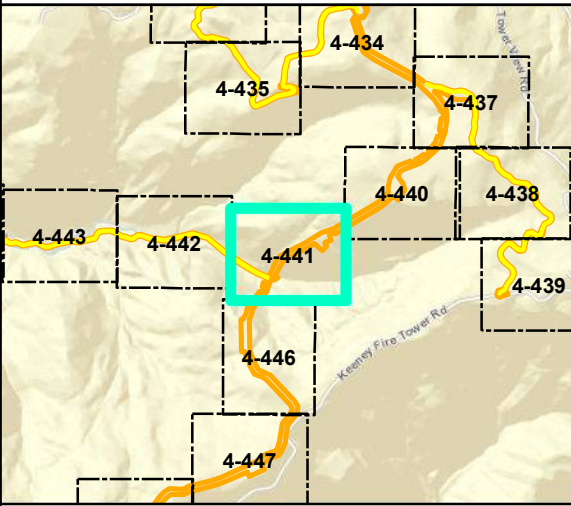
○ Milepost	Stream
--- Alignment Centerline	--- Intermittent
□ Access Road Temporary LOD	--- Perennial
□ Access Road Permanent LOD	--- Ephemeral
□ Permanent Facility	▨ Pond
□ Limit of Disturbance	Wetland
■ Bore Pit	▨ Palustrine Forested
— Culvert	▨ Palustrine Emergent
	▨ Palustrine Scrub-Shrub

Note:
Refer to Table 2 (Streams) and Table 3 (Wetlands) in the Individual Permit Application for information on resource impacts.

NAD 1983 UTM 17N

1 in = 200 ft

200 160 120 80 40 0 200 Feet



Mountain Valley Pipeline Project

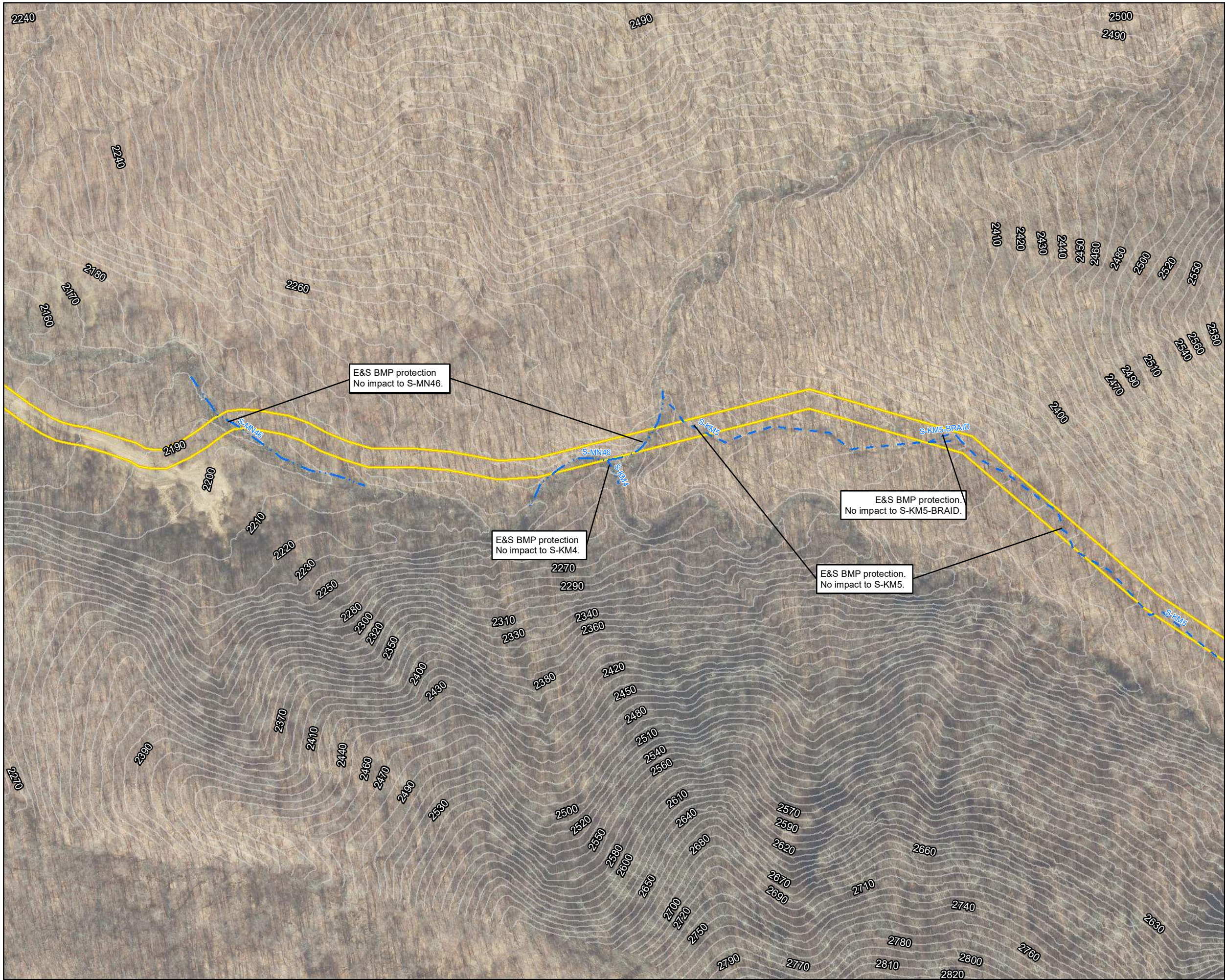


Detail Map Individual Permit Application

Figure 4-441
Summers County, West Virginia

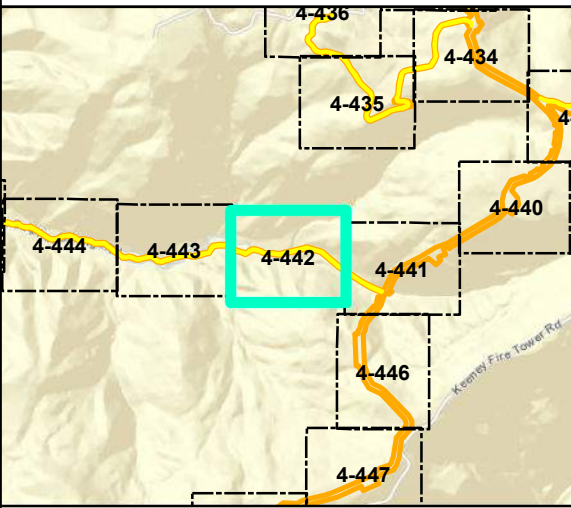
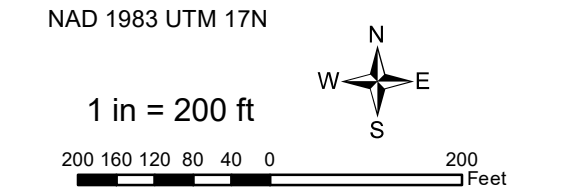
November 2022

Data Sources: WV GIS Technical Center Imagery Service 2020
Note: Map insets are at a scale of 1 inch = 50 feet unless otherwise noted.



- Legend**
- | | |
|-------------------------------|--------------------------|
| ○ Milepost | Stream |
| --- Alignment Centerline | --- Intermittent |
| --- Access Road Temporary LOD | --- Perennial |
| --- Access Road Permanent LOD | --- Ephemeral |
| Permanent Facility | ▨ Pond |
| Limit of Disturbance | Wetland |
| ■ Bore Pit | ▨ Palustrine Forested |
| — Culvert | ▨ Palustrine Emergent |
| | ▨ Palustrine Scrub-Shrub |

Note:
Refer to Table 2 (Streams) and Table 3 (Wetlands) in the Individual Permit Application for information on resource impacts.



Mountain Valley Pipeline Project

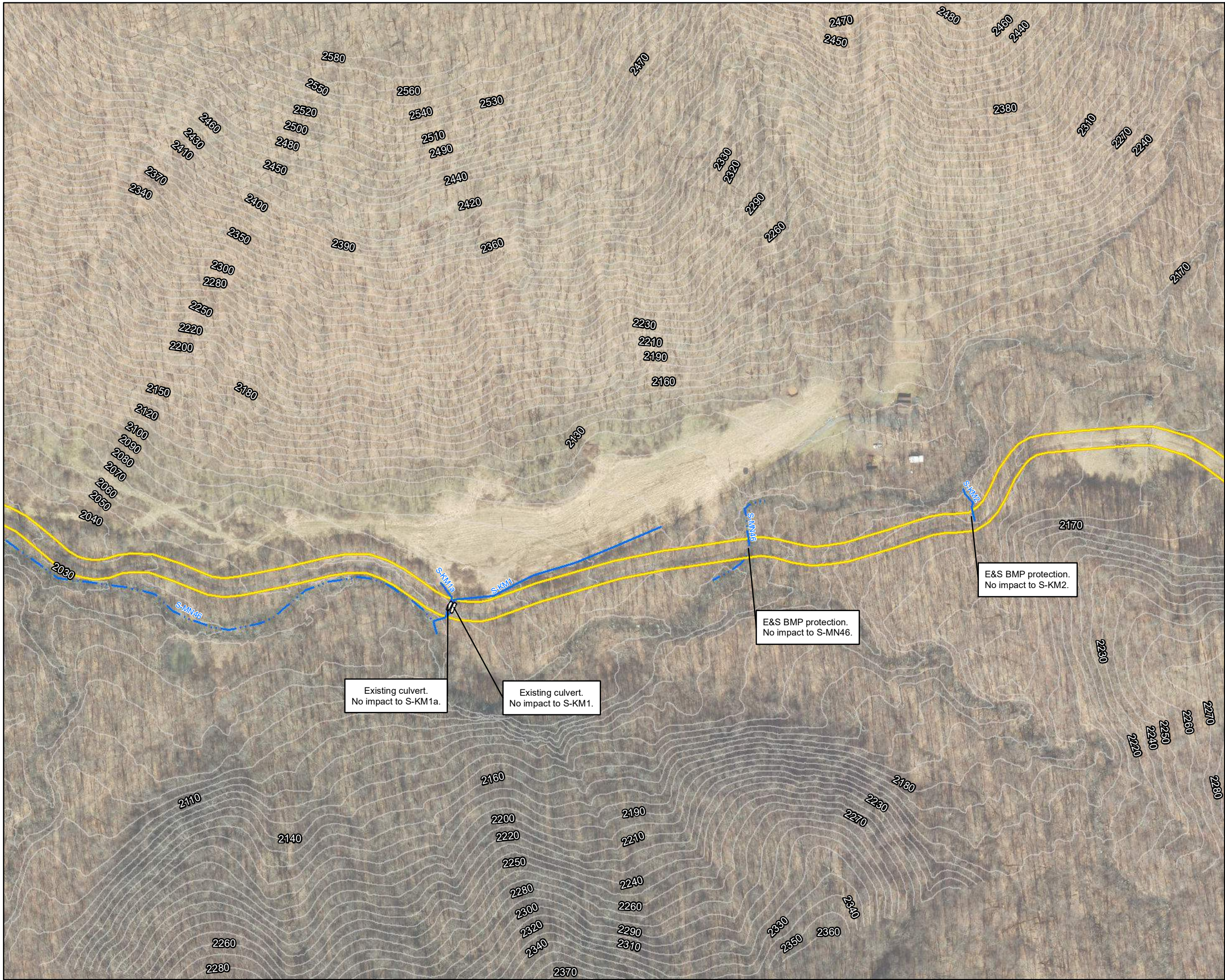


**Detail Map
Individual Permit Application**

Figure 4-442
Summers County, West Virginia

November 2022

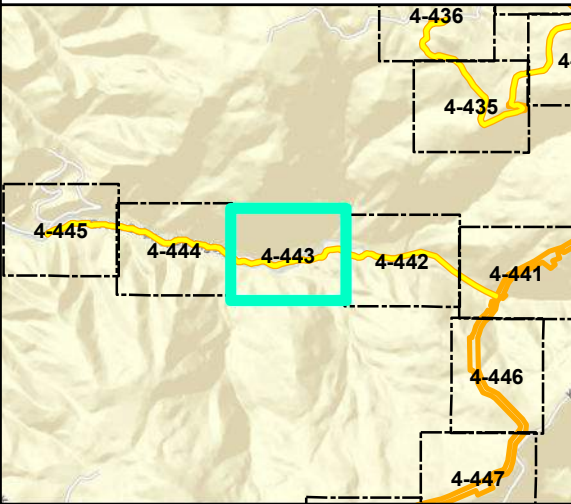
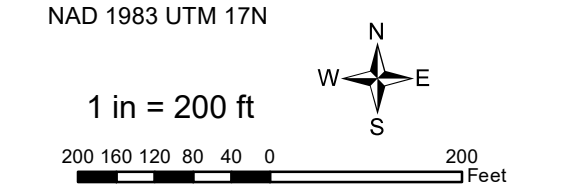
Data Sources: WV GIS Technical Center Imagery Service 2020
Note: Map insets are at a scale of 1 inch = 50 feet unless otherwise noted.



Legend

- | | |
|-----------------------------|--------------------------|
| ○ Milepost | Stream |
| — Alignment Centerline | — Intermittent |
| □ Access Road Temporary LOD | — Perennial |
| □ Access Road Permanent LOD | — Ephemeral |
| □ Permanent Facility | ▨ Pond |
| □ Limit of Disturbance | Wetland |
| ■ Bore Pit | ▨ Palustrine Forested |
| — Culvert | ▨ Palustrine Emergent |
| | ▨ Palustrine Scrub-Shrub |

Note:
Refer to Table 2 (Streams) and Table 3 (Wetlands) in the Individual Permit Application for information on resource impacts.



Mountain Valley Pipeline Project

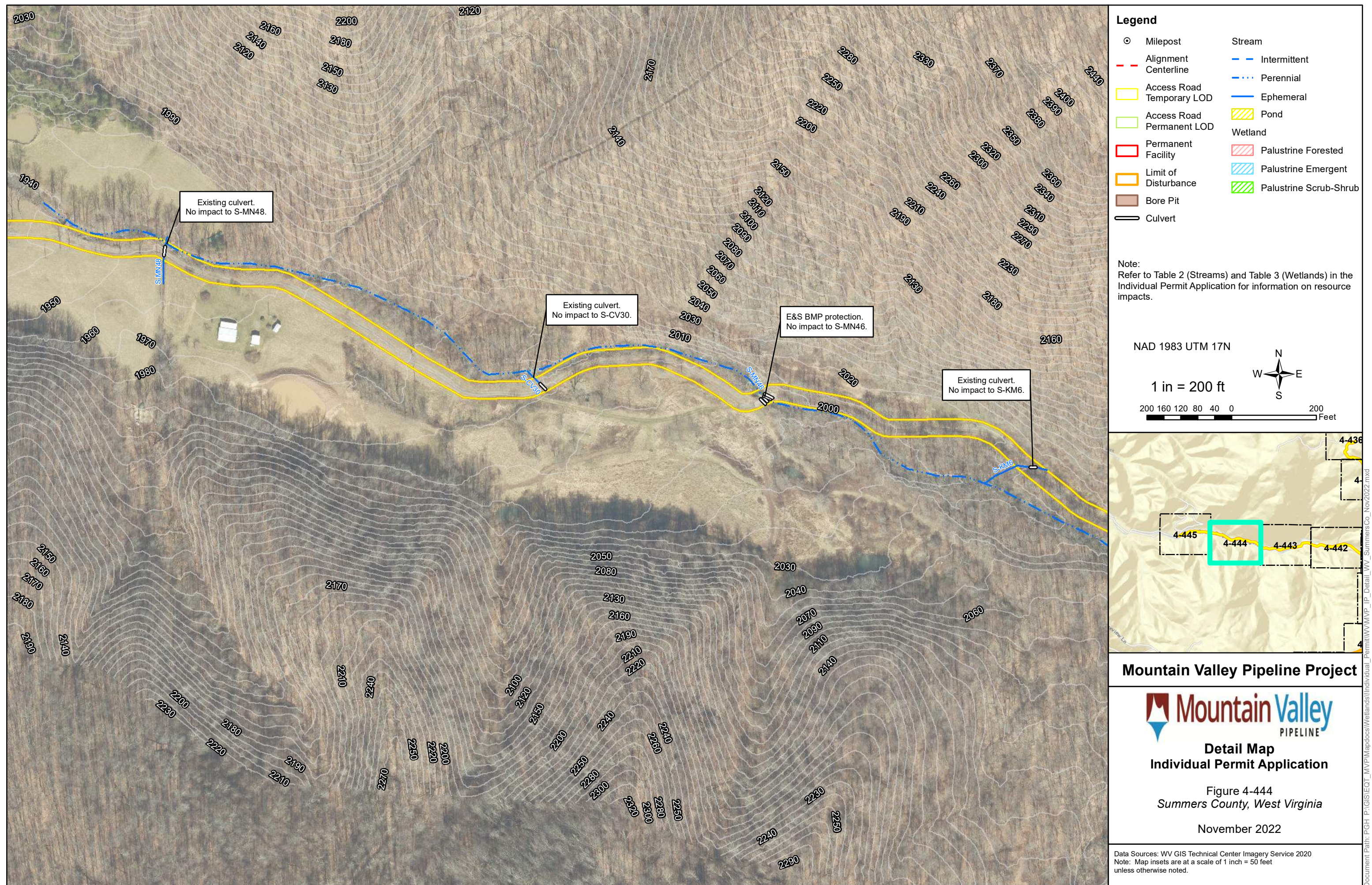


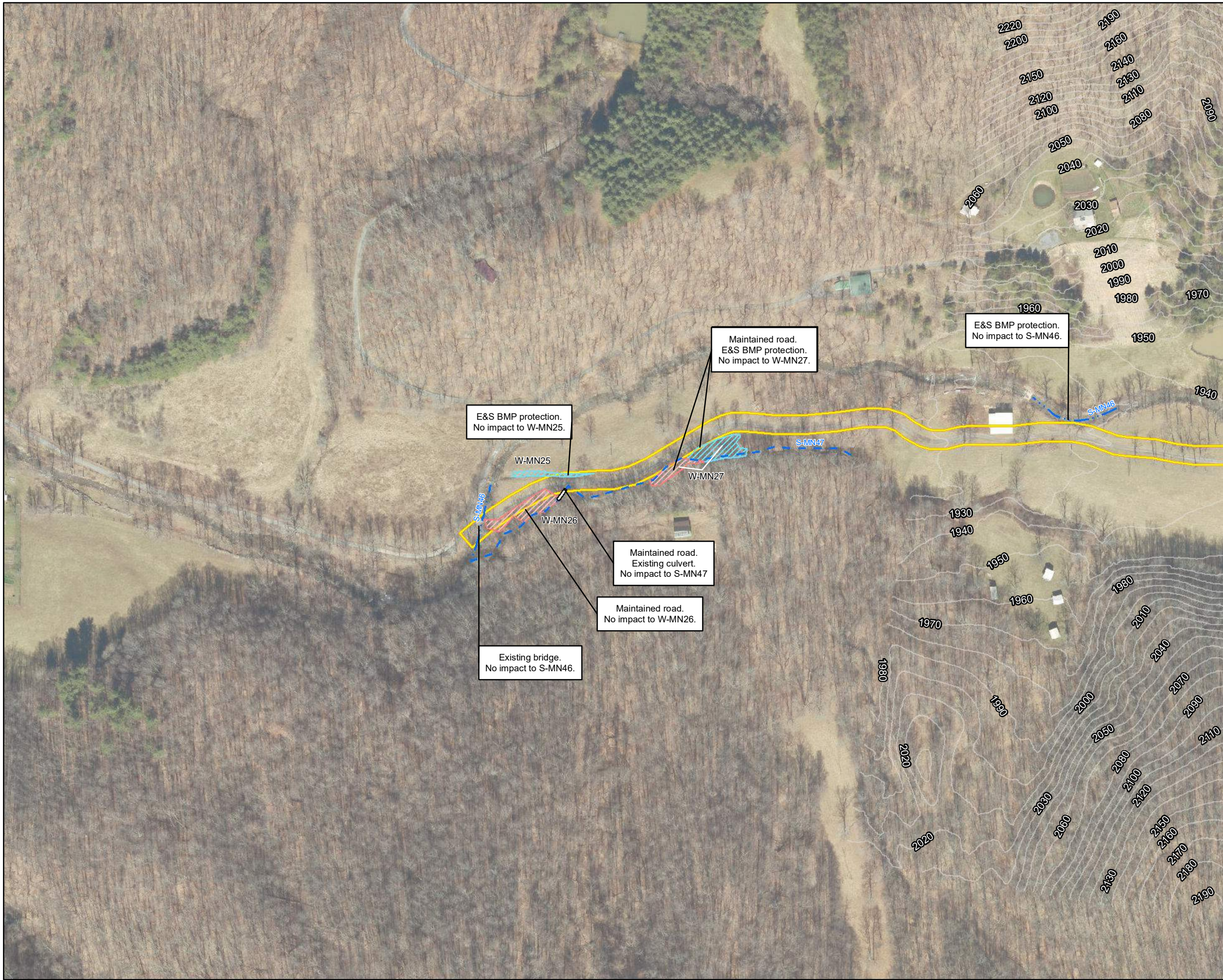
**Detail Map
Individual Permit Application**

Figure 4-443
Summers County, West Virginia

November 2022

Data Sources: WV GIS Technical Center Imagery Service 2020
Note: Map insets are at a scale of 1 inch = 50 feet unless otherwise noted.





Legend

○ Milepost	Stream
— Alignment Centerline	— Intermittent
— Access Road Temporary LOD	— Perennial
— Access Road Permanent LOD	— Ephemeral
Permanent Facility	▨ Pond
Limit of Disturbance	Wetland
■ Bore Pit	▨ Palustrine Forested
— Culvert	▨ Palustrine Emergent
	▨ Palustrine Scrub-Shrub

Note:
Refer to Table 2 (Streams) and Table 3 (Wetlands) in the Individual Permit Application for information on resource impacts.

NAD 1983 UTM 17N

1 in = 200 ft

200 160 120 80 40 0 200 Feet

Mountain Valley Pipeline Project

Detail Map
Individual Permit Application

Figure 4-445
Summers County, West Virginia

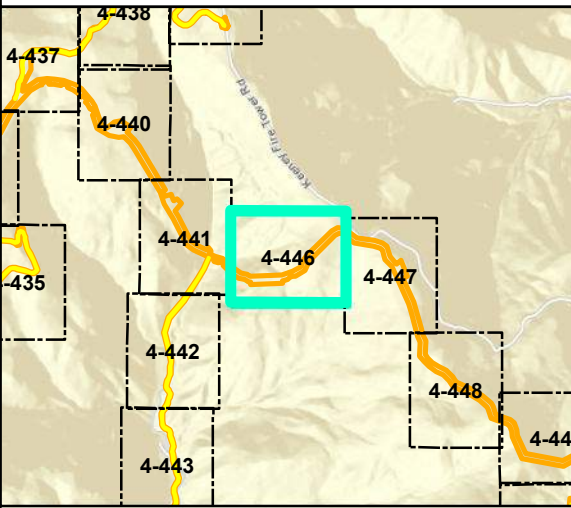
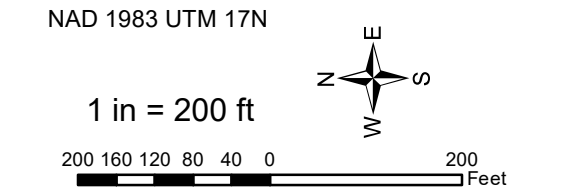
November 2022

Data Sources: WV GIS Technical Center Imagery Service 2020
Note: Map insets are at a scale of 1 inch = 50 feet unless otherwise noted.



- Legend**
- | | |
|-----------------------------|--------------------------|
| ○ Milepost | Stream |
| --- Alignment Centerline | --- Intermittent |
| □ Access Road Temporary LOD | --- Perennial |
| □ Access Road Permanent LOD | --- Ephemeral |
| □ Permanent Facility | ▨ Pond |
| □ Limit of Disturbance | Wetland |
| ■ Bore Pit | ▨ Palustrine Forested |
| — Culvert | ▨ Palustrine Emergent |
| | ▨ Palustrine Scrub-Shrub |

Note:
Refer to Table 2 (Streams) and Table 3 (Wetlands) in the Individual Permit Application for information on resource impacts.



Mountain Valley Pipeline Project



Detail Map Individual Permit Application

Figure 4-446
Summers County, West Virginia

November 2022

Data Sources: WV GIS Technical Center Imagery Service 2020
Note: Map insets are at a scale of 1 inch = 50 feet unless otherwise noted.



Legend

○ Milepost	Stream
- - - Alignment Centerline	- - - Intermittent
□ Access Road Temporary LOD	- · - · - Perennial
□ Access Road Permanent LOD	— Ephemeral
□ Permanent Facility	▨ Pond
▭ Limit of Disturbance	Wetland
■ Bore Pit	▨ Palustrine Forested
— Culvert	▨ Palustrine Emergent
	▨ Palustrine Scrub-Shrub

Note:
Refer to Table 2 (Streams) and Table 3 (Wetlands) in the Individual Permit Application for information on resource impacts.

NAD 1983 UTM 17N

1 in = 200 ft

200 160 120 80 40 0 200 Feet

Mountain Valley Pipeline Project

Detail Map
Individual Permit Application

Figure 4-447
Summers County, West Virginia

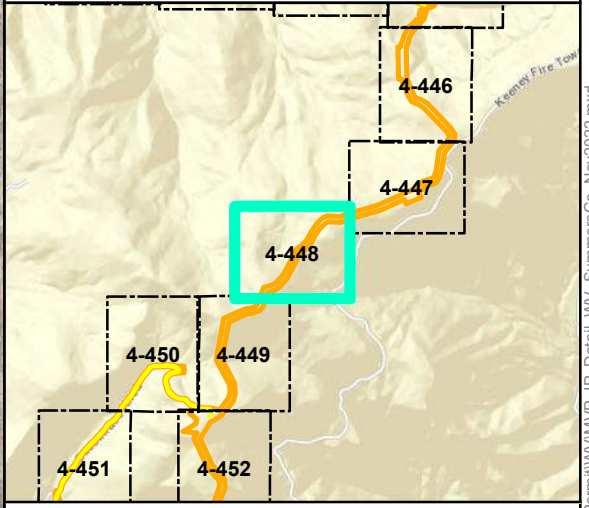
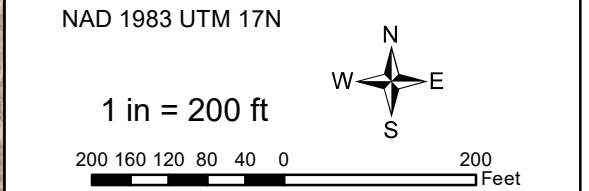
November 2022

Data Sources: WV GIS Technical Center Imagery Service 2020
Note: Map insets are at a scale of 1 inch = 50 feet unless otherwise noted.



- Legend**
- | | |
|-----------------------------|--------------------------|
| ○ Milepost | Stream |
| - - - Alignment Centerline | - - - Intermittent |
| □ Access Road Temporary LOD | - · - · - Perennial |
| □ Access Road Permanent LOD | — Ephemeral |
| □ Permanent Facility | ▨ Pond |
| ▭ Limit of Disturbance | Wetland |
| ■ Bore Pit | ▨ Palustrine Forested |
| — Culvert | ▨ Palustrine Emergent |
| | ▨ Palustrine Scrub-Shrub |

Note:
Refer to Table 2 (Streams) and Table 3 (Wetlands) in the Individual Permit Application for information on resource impacts.



Mountain Valley Pipeline Project



Detail Map Individual Permit Application

Figure 4-448
Summers County, West Virginia
November 2022

Data Sources: WV GIS Technical Center Imagery Service 2020
Note: Map insets are at a scale of 1 inch = 50 feet unless otherwise noted.



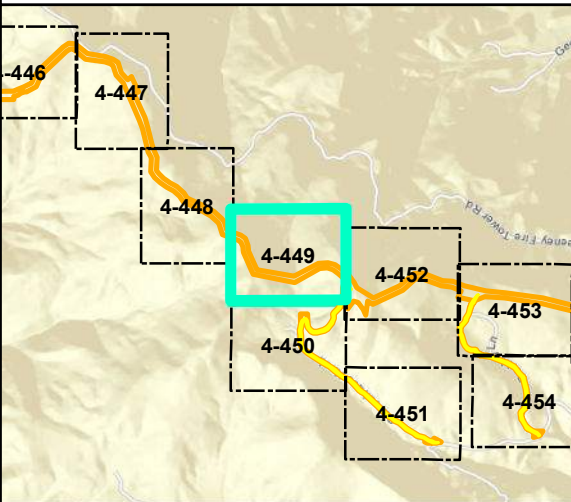
- Legend**
- | | |
|-----------------------------|--------------------------|
| ○ Milepost | Stream |
| --- Alignment Centerline | --- Intermittent |
| □ Access Road Temporary LOD | --- Perennial |
| □ Access Road Permanent LOD | --- Ephemeral |
| □ Permanent Facility | ▨ Pond |
| □ Limit of Disturbance | Wetland |
| ■ Bore Pit | ▨ Palustrine Forested |
| — Culvert | ▨ Palustrine Emergent |
| | ▨ Palustrine Scrub-Shrub |

Note:
Refer to Table 2 (Streams) and Table 3 (Wetlands) in the Individual Permit Application for information on resource impacts.

NAD 1983 UTM 17N

1 in = 200 ft

200 160 120 80 40 0 200 Feet



Mountain Valley Pipeline Project

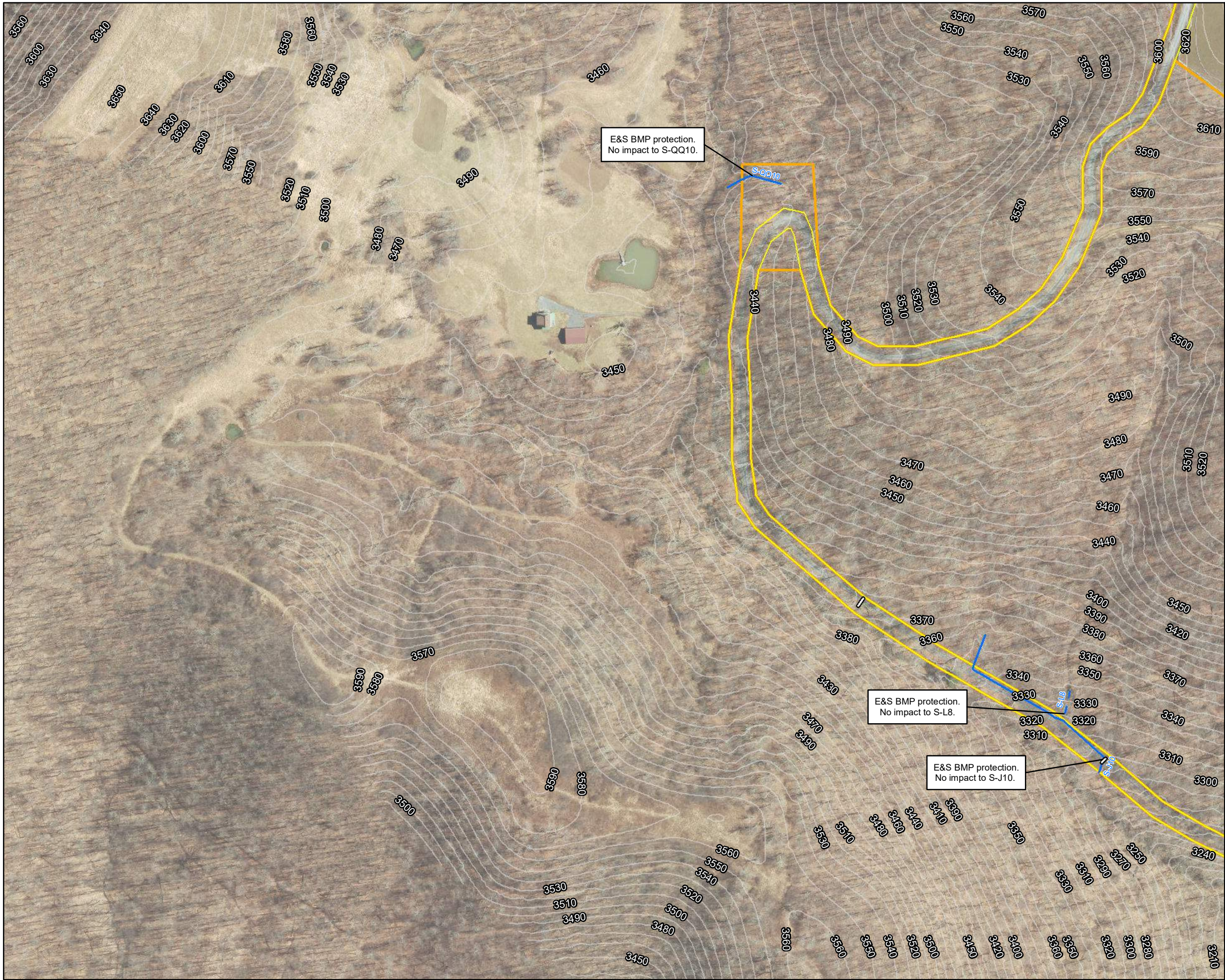


Detail Map Individual Permit Application

Figure 4-449
Summers County, West Virginia

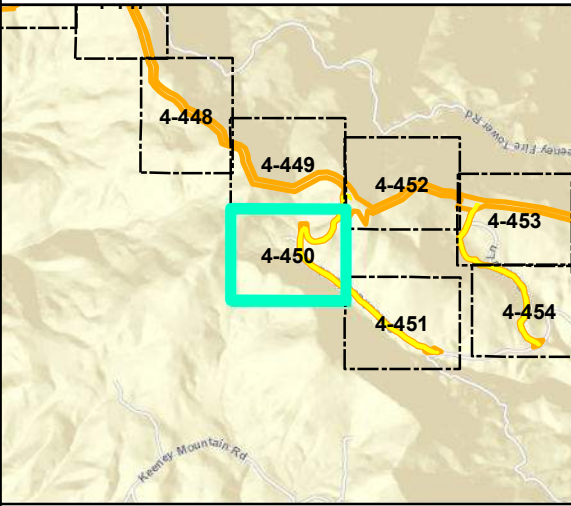
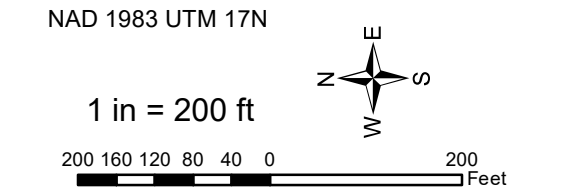
November 2022

Data Sources: WV GIS Technical Center Imagery Service 2020
Note: Map insets are at a scale of 1 inch = 50 feet unless otherwise noted.



- Legend**
- | | |
|-----------------------------|--------------------------|
| ○ Milepost | Stream |
| — Alignment Centerline | — Intermittent |
| — Access Road Temporary LOD | — Perennial |
| — Access Road Permanent LOD | — Ephemeral |
| Permanent Facility | ▨ Pond |
| Limit of Disturbance | Wetland |
| ■ Bore Pit | ▨ Palustrine Forested |
| — Culvert | ▨ Palustrine Emergent |
| | ▨ Palustrine Scrub-Shrub |

Note:
Refer to Table 2 (Streams) and Table 3 (Wetlands) in the Individual Permit Application for information on resource impacts.



Mountain Valley Pipeline Project



Detail Map Individual Permit Application

Figure 4-450
Summers County, West Virginia

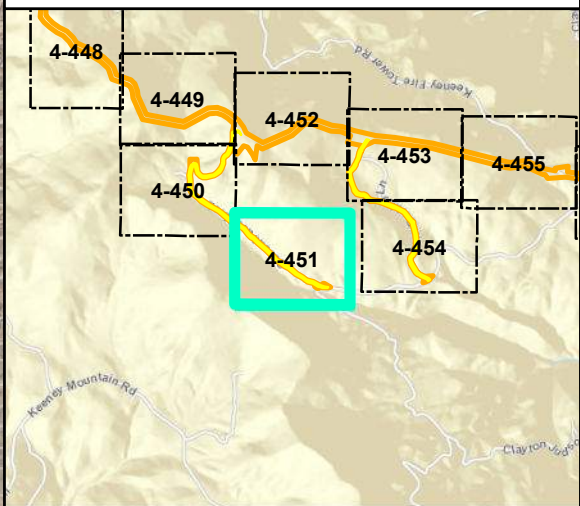
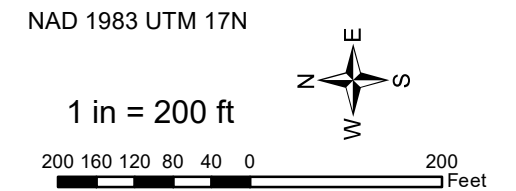
November 2022

Data Sources: WV GIS Technical Center Imagery Service 2020
Note: Map insets are at a scale of 1 inch = 50 feet unless otherwise noted.



- Legend**
- | | |
|------------------------|--------------------------|
| ○ Milepost | Stream |
| — Alignment | — Intermittent |
| — Centerline | — Perennial |
| □ Access Road | — Ephemeral |
| □ Temporary LOD | ▨ Pond |
| □ Access Road | Wetland |
| □ Permanent LOD | ▨ Palustrine Forested |
| ▨ Permanent Facility | ▨ Palustrine Emergent |
| ▨ Limit of Disturbance | ▨ Palustrine Scrub-Shrub |
| ▨ Bore Pit | |
| ▬ Culvert | |

Note:
Refer to Table 2 (Streams) and Table 3 (Wetlands) in the Individual Permit Application for information on resource impacts.



Mountain Valley Pipeline Project



Detail Map Individual Permit Application

Figure 4-451
Summers County, West Virginia

November 2022

Data Sources: WV GIS Technical Center Imagery Service 2020
Note: Map insets are at a scale of 1 inch = 50 feet unless otherwise noted.



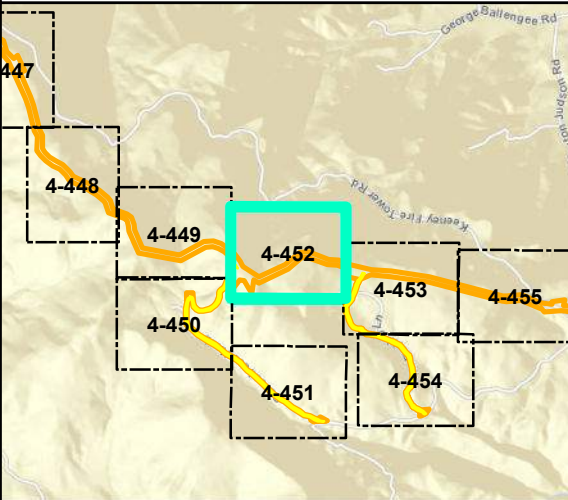
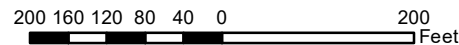
Legend

- | | |
|-----------------------------|--------------------------|
| ○ Milepost | Stream |
| - - - Alignment Centerline | - - - Intermittent |
| □ Access Road Temporary LOD | - · · · Perennial |
| □ Access Road Permanent LOD | — Ephemeral |
| □ Permanent Facility | ▨ Pond |
| □ Limit of Disturbance | Wetland |
| ■ Bore Pit | ▨ Palustrine Forested |
| — Culvert | ▨ Palustrine Emergent |
| | ▨ Palustrine Scrub-Shrub |

Note:
Refer to Table 2 (Streams) and Table 3 (Wetlands) in the Individual Permit Application for information on resource impacts.

NAD 1983 UTM 17N

1 in = 200 ft



Mountain Valley Pipeline Project



**Detail Map
Individual Permit Application**

Figure 4-452
Summers County, West Virginia

November 2022

Data Sources: WV GIS Technical Center Imagery Service 2020
Note: Map insets are at a scale of 1 inch = 50 feet unless otherwise noted.



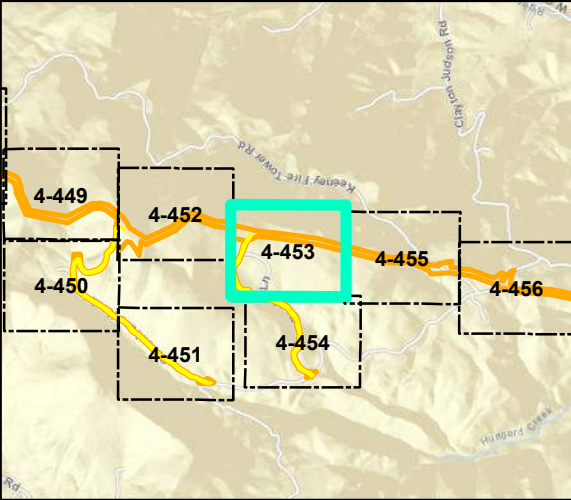
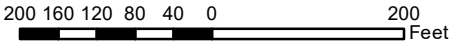
Legend

- | | |
|-----------------------------|--------------------------|
| ○ Milepost | Stream |
| - - - Alignment Centerline | - - - Intermittent |
| □ Access Road Temporary LOD | - · - · - Perennial |
| □ Access Road Permanent LOD | — Ephemeral |
| □ Permanent Facility | ▨ Pond |
| □ Limit of Disturbance | Wetland |
| ■ Bore Pit | ▨ Palustrine Forested |
| — Culvert | ▨ Palustrine Emergent |
| | ▨ Palustrine Scrub-Shrub |

Note:
Refer to Table 2 (Streams) and Table 3 (Wetlands) in the Individual Permit Application for information on resource impacts.

NAD 1983 UTM 17N

1 in = 200 ft



Mountain Valley Pipeline Project



**Detail Map
Individual Permit Application**

Figure 4-453
Summers County, West Virginia

November 2022

Data Sources: WV GIS Technical Center Imagery Service 2020
Note: Map insets are at a scale of 1 inch = 50 feet unless otherwise noted.



Legend

○ Milepost	Stream
— Alignment Centerline	— Intermittent
□ Access Road Temporary LOD	— Perennial
□ Access Road Permanent LOD	— Ephemeral
□ Permanent Facility	▨ Pond
□ Limit of Disturbance	Wetland
■ Bore Pit	▨ Palustrine Forested
— Culvert	▨ Palustrine Emergent
	▨ Palustrine Scrub-Shrub

Note:
Refer to Table 2 (Streams) and Table 3 (Wetlands) in the Individual Permit Application for information on resource impacts.

NAD 1983 UTM 17N

1 in = 200 ft

200 160 120 80 40 0 200 Feet

4-449 4-452 4-453 4-455 4-456 4-450 4-451 4-454

Mountain Valley Pipeline Project

Detail Map
Individual Permit Application

Figure 4-454
Summers County, West Virginia

November 2022

Data Sources: WV GIS Technical Center Imagery Service 2020
Note: Map insets are at a scale of 1 inch = 50 feet unless otherwise noted.



Legend

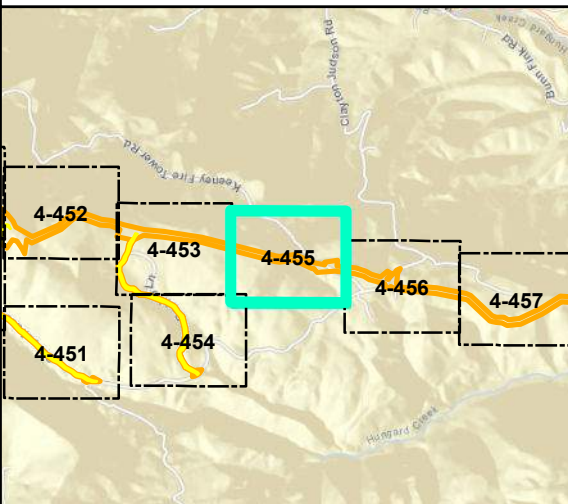
- | | |
|---------------------------|------------------------|
| Milepost | Stream |
| Alignment Centerline | Intermittent |
| Access Road Temporary LOD | Perennial |
| Access Road Permanent LOD | Ephemeral |
| Permanent Facility | Pond |
| Limit of Disturbance | Wetland |
| Bore Pit | Palustrine Forested |
| Culvert | Palustrine Emergent |
| | Palustrine Scrub-Shrub |

Note:
Refer to Table 2 (Streams) and Table 3 (Wetlands) in the Individual Permit Application for information on resource impacts.

NAD 1983 UTM 17N

1 in = 200 ft

200 160 120 80 40 0 200 Feet



Mountain Valley Pipeline Project

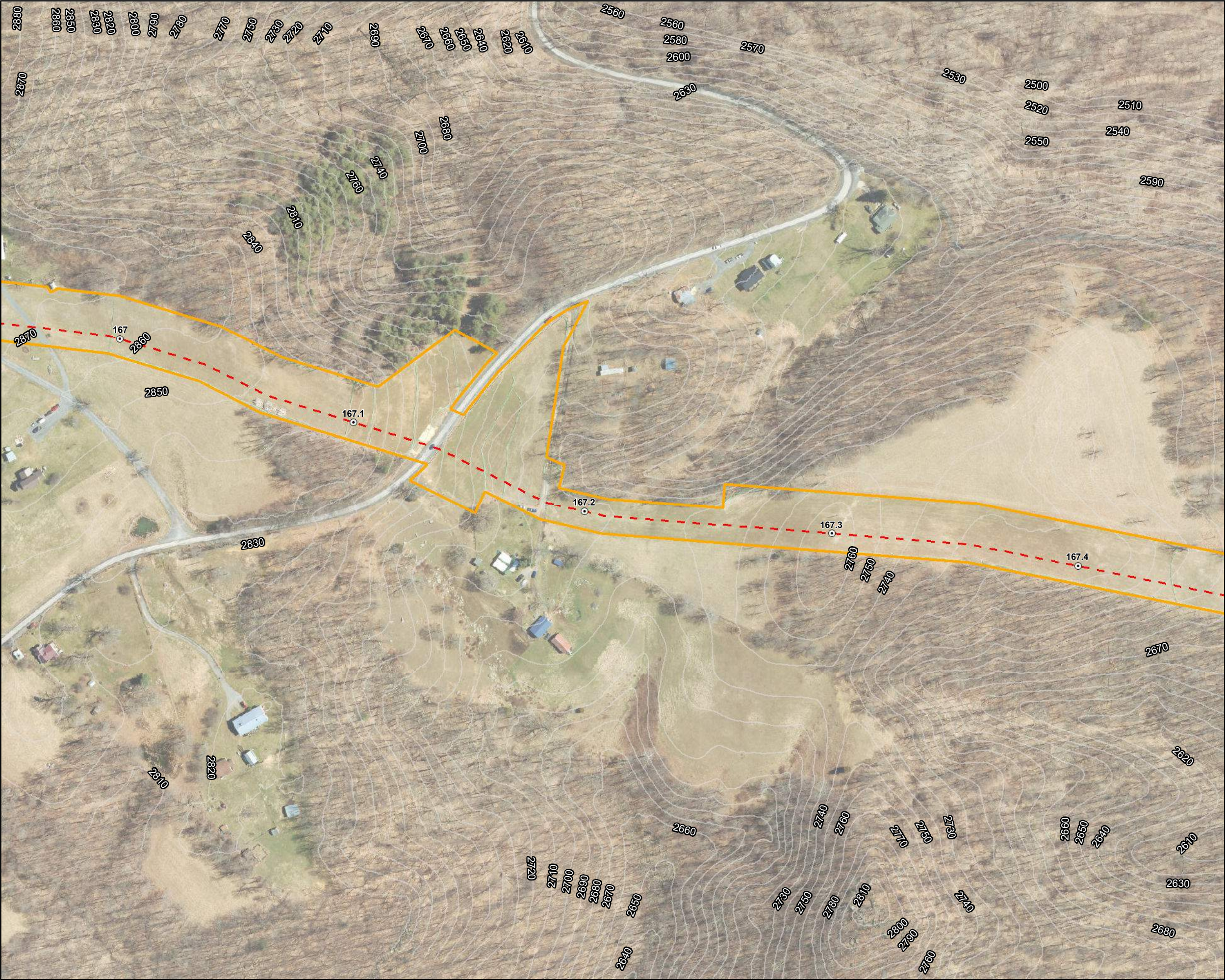


**Detail Map
Individual Permit Application**

Figure 4-455
Summers County, West Virginia

November 2022

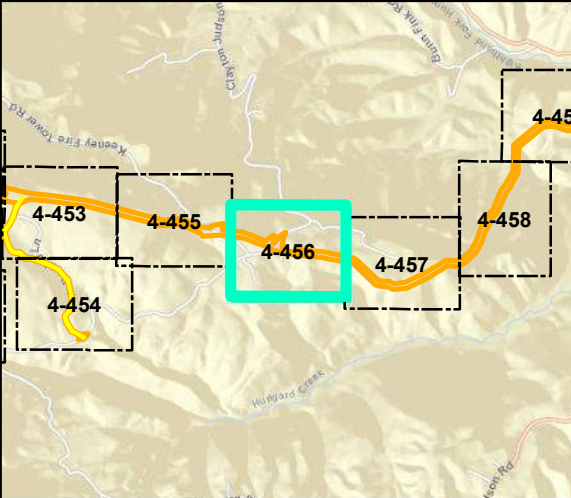
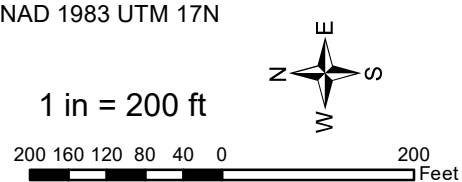
Data Sources: WV GIS Technical Center Imagery Service 2020
Note: Map insets are at a scale of 1 inch = 50 feet unless otherwise noted.



Legend

- | | |
|-----------------------------|--------------------------|
| ○ Milepost | Stream |
| - - - Alignment Centerline | - - - Intermittent |
| □ Access Road Temporary LOD | - · - · - Perennial |
| □ Access Road Permanent LOD | — Ephemeral |
| □ Permanent Facility | ▨ Pond |
| □ Limit of Disturbance | Wetland |
| ■ Bore Pit | ▨ Palustrine Forested |
| ▬ Culvert | ▨ Palustrine Emergent |
| | ▨ Palustrine Scrub-Shrub |

Note:
Refer to Table 2 (Streams) and Table 3 (Wetlands) in the Individual Permit Application for information on resource impacts.



Mountain Valley Pipeline Project



**Detail Map
Individual Permit Application**

Figure 4-456
Summers County, West Virginia

November 2022

Data Sources: WV GIS Technical Center Imagery Service 2020
Note: Map insets are at a scale of 1 inch = 50 feet unless otherwise noted.



Legend

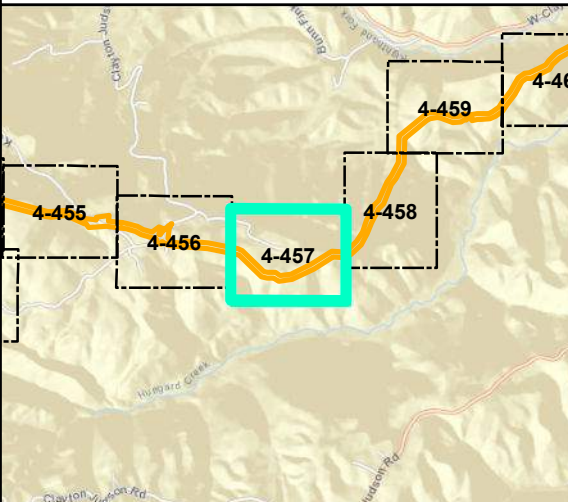
- | | |
|-----------------------------|--------------------------|
| ○ Milepost | Stream |
| - - - Alignment Centerline | - - - Intermittent |
| □ Access Road Temporary LOD | - · - · - Perennial |
| □ Access Road Permanent LOD | — Ephemeral |
| □ Permanent Facility | ▨ Pond |
| □ Limit of Disturbance | Wetland |
| ■ Bore Pit | ▨ Palustrine Forested |
| — Culvert | ▨ Palustrine Emergent |
| | ▨ Palustrine Scrub-Shrub |

Note:
Refer to Table 2 (Streams) and Table 3 (Wetlands) in the Individual Permit Application for information on resource impacts.

NAD 1983 UTM 17N

1 in = 200 ft

200 160 120 80 40 0 200 Feet



Mountain Valley Pipeline Project



**Detail Map
Individual Permit Application**

Figure 4-457
Summers County, West Virginia

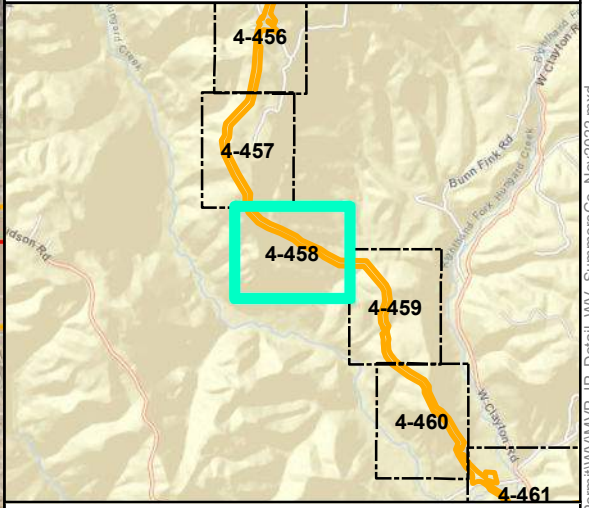
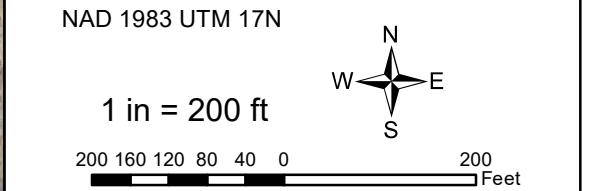
November 2022

Data Sources: WV GIS Technical Center Imagery Service 2020
Note: Map insets are at a scale of 1 inch = 50 feet unless otherwise noted.



- Legend**
- | | |
|-----------------------------|--------------------------|
| ○ Milepost | Stream |
| - - - Alignment Centerline | - - - Intermittent |
| □ Access Road Temporary LOD | - · - · - Perennial |
| □ Access Road Permanent LOD | — Ephemeral |
| □ Permanent Facility | ▨ Pond |
| ▭ Limit of Disturbance | Wetland |
| ■ Bore Pit | ▨ Palustrine Forested |
| — Culvert | ▨ Palustrine Emergent |
| | ▨ Palustrine Scrub-Shrub |

Note:
Refer to Table 2 (Streams) and Table 3 (Wetlands) in the Individual Permit Application for information on resource impacts.



Mountain Valley Pipeline Project



**Detail Map
Individual Permit Application**

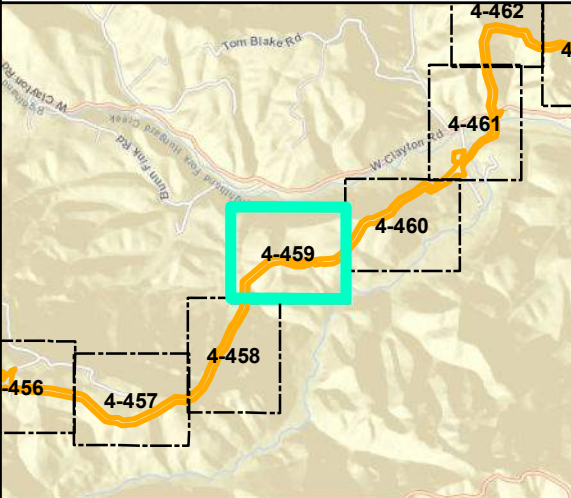
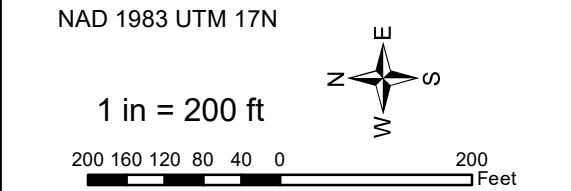
Figure 4-458
Summers County, West Virginia
November 2022

Data Sources: WV GIS Technical Center Imagery Service 2020
Note: Map insets are at a scale of 1 inch = 50 feet unless otherwise noted.



- Legend**
- | | |
|---------------------------|------------------------|
| Milepost | Stream |
| Alignment Centerline | Intermittent |
| Access Road Temporary LOD | Perennial |
| Access Road Permanent LOD | Ephemeral |
| Permanent Facility | Pond |
| Limit of Disturbance | Wetland |
| Bore Pit | Palustrine Forested |
| Culvert | Palustrine Emergent |
| | Palustrine Scrub-Shrub |

Note:
Refer to Table 2 (Streams) and Table 3 (Wetlands) in the Individual Permit Application for information on resource impacts.



Mountain Valley Pipeline Project



**Detail Map
Individual Permit Application**

Figure 4-459
Summers County, West Virginia
November 2022

Data Sources: WV GIS Technical Center Imagery Service 2020
Note: Map insets are at a scale of 1 inch = 50 feet unless otherwise noted.



Legend

Milepost	Stream
Alignment Centerline	Intermittent
Access Road Temporary LOD	Perennial
Access Road Permanent LOD	Ephemeral
Permanent Facility	Pond
Limit of Disturbance	Wetland
Bore Pit	Palustrine Forested
Culvert	Palustrine Emergent
	Palustrine Scrub-Shrub

Note:
Refer to Table 2 (Streams) and Table 3 (Wetlands) in the Individual Permit Application for information on resource impacts.

NAD 1983 UTM 17N

1 in = 200 ft

Mountain Valley Pipeline Project

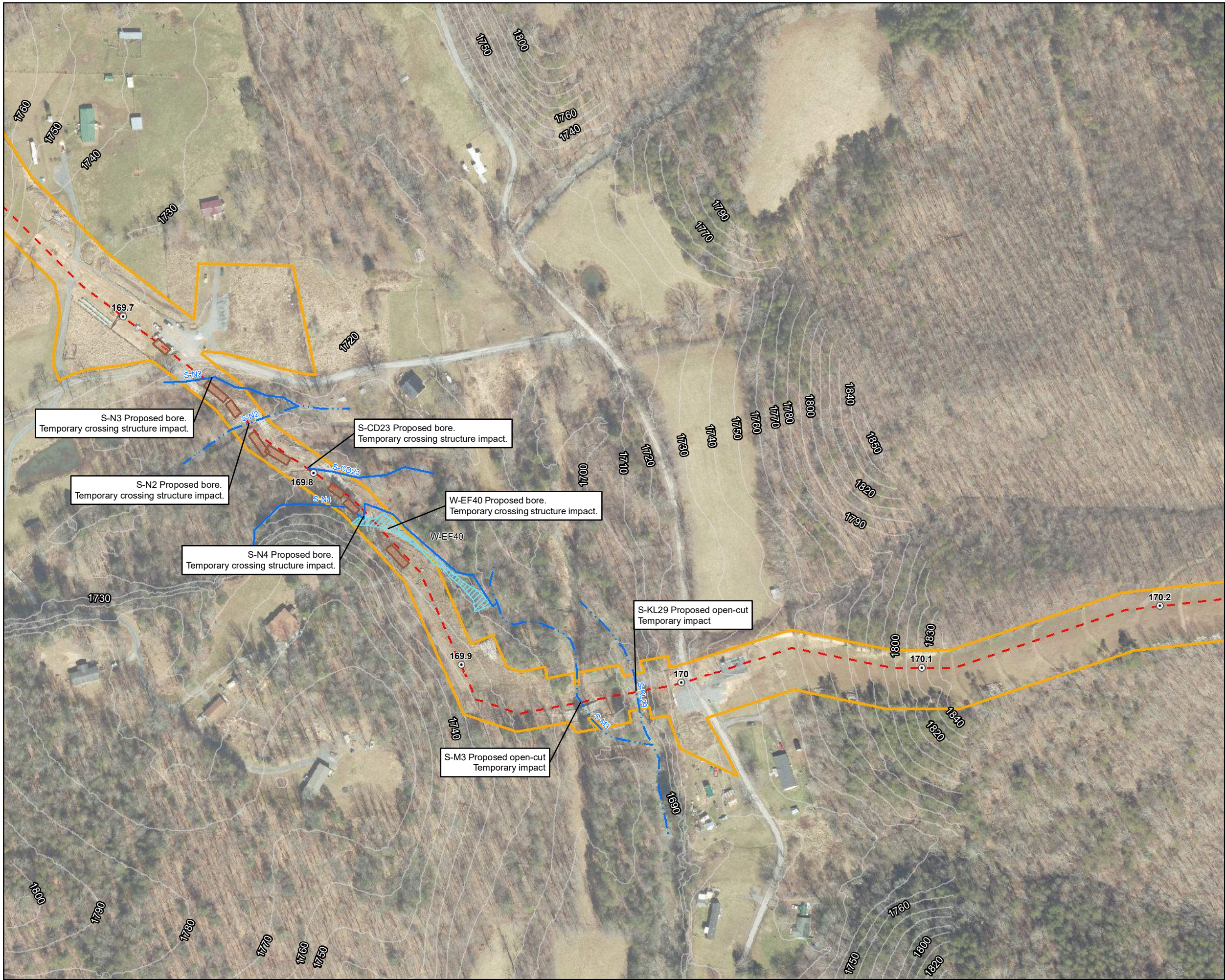
Detail Map Individual Permit Application

Figure 4-460
Summers County, West Virginia

November 2022

Data Sources: WV GIS Technical Center Imagery Service 2020
Note: Map insets are at a scale of 1 inch = 50 feet unless otherwise noted.

Document Path: P:\GIS\REQ1_MVP\Mapdocs\Wetlands\Individual_Permit\WV_MVP_IP_Detail_WV_SummersCo_Nov2022.mxd



Legend

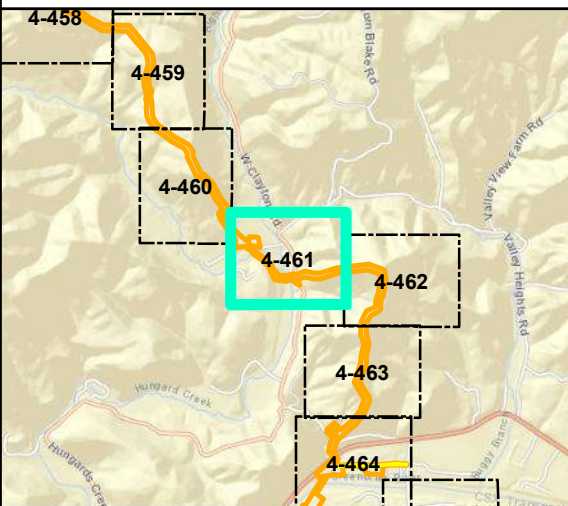
- | | |
|-----------------------------|--------------------------|
| ○ Milepost | Stream |
| - - - Alignment Centerline | - - - Intermittent |
| □ Access Road Temporary LOD | - · - · - Perennial |
| □ Access Road Permanent LOD | — Ephemeral |
| □ Permanent Facility | ▨ Pond |
| ▨ Limit of Disturbance | Wetland |
| ■ Bore Pit | ▨ Palustrine Forested |
| — Culvert | ▨ Palustrine Emergent |
| | ▨ Palustrine Scrub-Shrub |

Note:
Refer to Table 2 (Streams) and Table 3 (Wetlands) in the Individual Permit Application for information on resource impacts.

NAD 1983 UTM 17N

1 in = 200 ft

200 160 120 80 40 0 200 Feet



Mountain Valley Pipeline Project



Detail Map Individual Permit Application

Figure 4-461
Summers County, West Virginia

November 2022

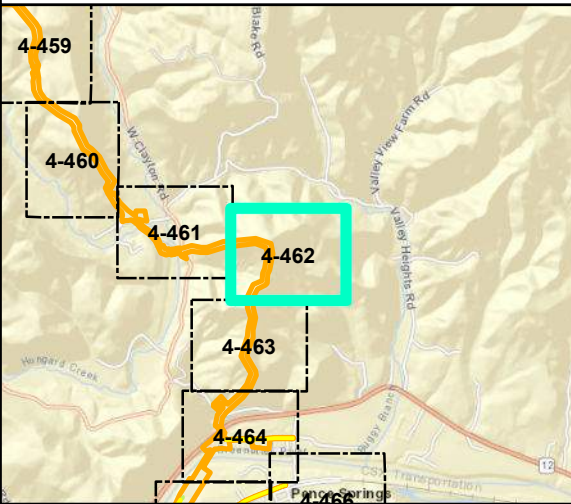
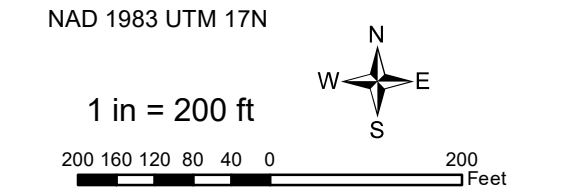
Data Sources: WV GIS Technical Center Imagery Service 2020
Note: Map insets are at a scale of 1 inch = 50 feet unless otherwise noted.



Legend

- | | |
|-----------------------------|--------------------------|
| ⊙ Milepost | Stream |
| - - - Alignment Centerline | - - - Intermittent |
| □ Access Road Temporary LOD | - · - · - Perennial |
| □ Access Road Permanent LOD | — Ephemeral |
| □ Permanent Facility | ▨ Pond |
| □ Limit of Disturbance | Wetland |
| ■ Bore Pit | ▨ Palustrine Forested |
| ▬ Culvert | ▨ Palustrine Emergent |
| | ▨ Palustrine Scrub-Shrub |

Note:
Refer to Table 2 (Streams) and Table 3 (Wetlands) in the Individual Permit Application for information on resource impacts.



Mountain Valley Pipeline Project



**Detail Map
Individual Permit Application**

Figure 4-462
Summers County, West Virginia

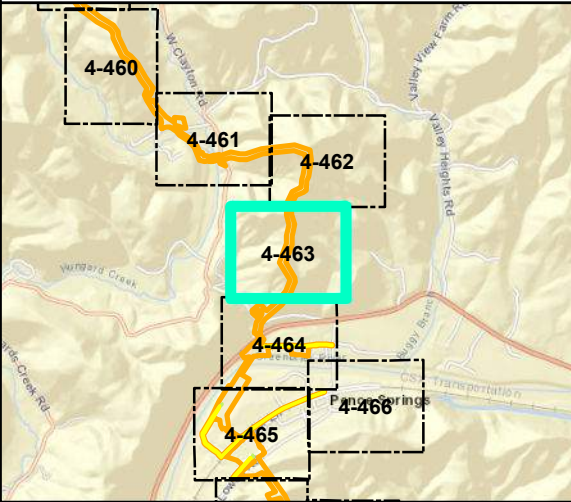
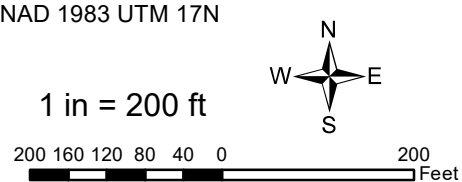
November 2022

Data Sources: WV GIS Technical Center Imagery Service 2020
Note: Map insets are at a scale of 1 inch = 50 feet unless otherwise noted.



- Legend**
- | | |
|-----------------------------|--------------------------|
| ○ Milepost | Stream |
| - - - Alignment Centerline | - - - Intermittent |
| □ Access Road Temporary LOD | - · - · - Perennial |
| □ Access Road Permanent LOD | — Ephemeral |
| □ Permanent Facility | ▨ Pond |
| ▭ Limit of Disturbance | Wetland |
| ■ Bore Pit | ▨ Palustrine Forested |
| — Culvert | ▨ Palustrine Emergent |
| | ▨ Palustrine Scrub-Shrub |

Note:
Refer to Table 2 (Streams) and Table 3 (Wetlands) in the Individual Permit Application for information on resource impacts.



Mountain Valley Pipeline Project

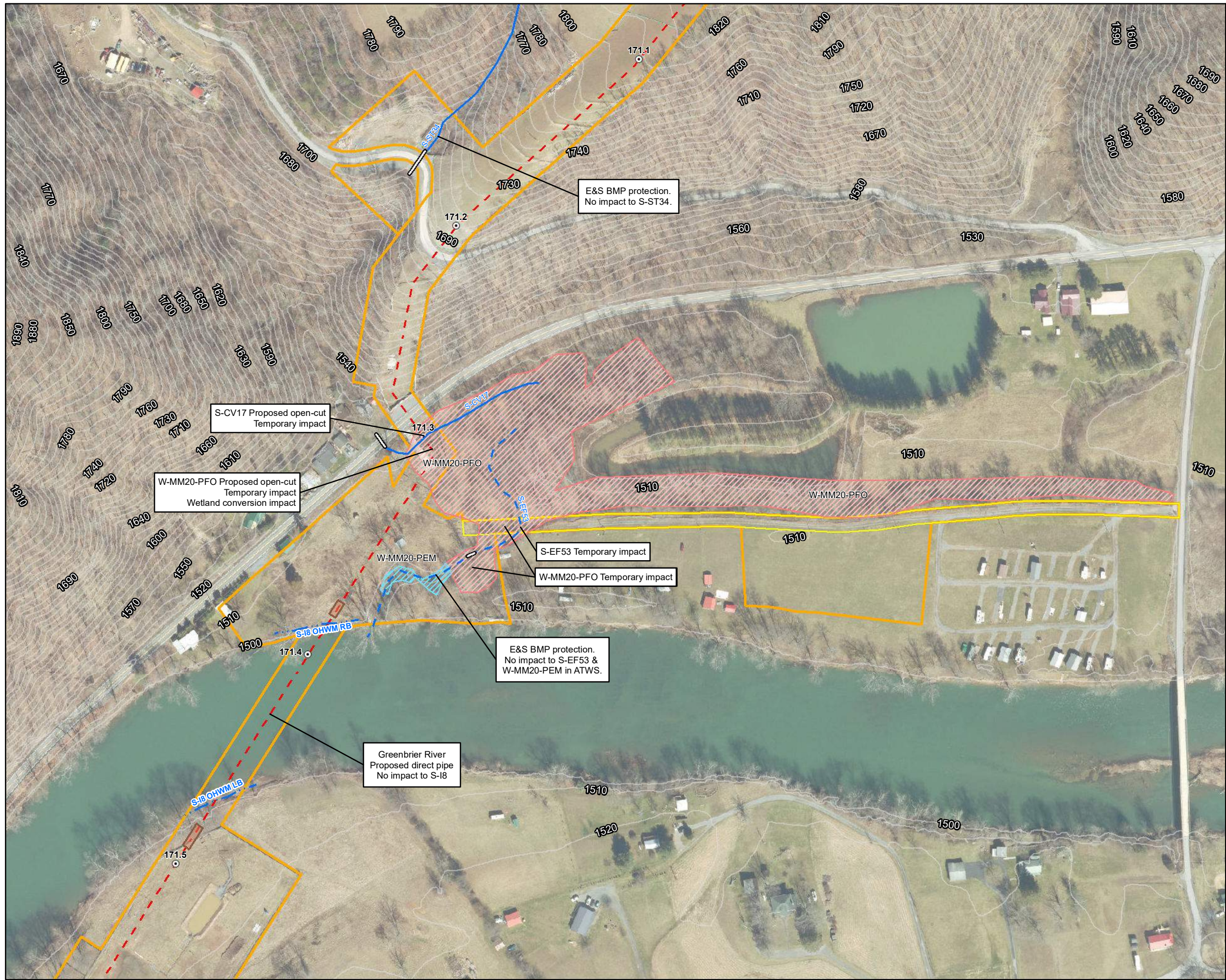


**Detail Map
Individual Permit Application**

Figure 4-463
Summers County, West Virginia

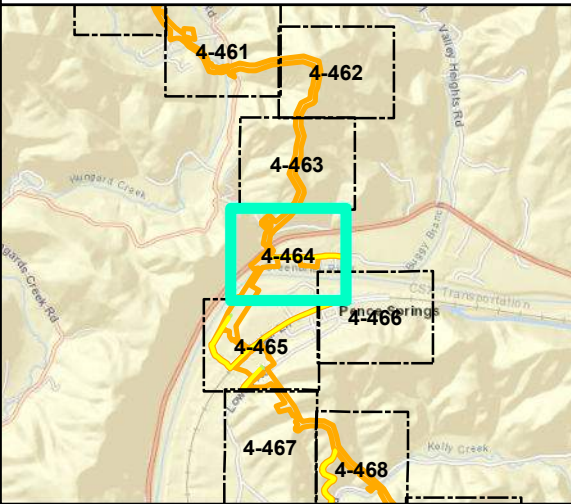
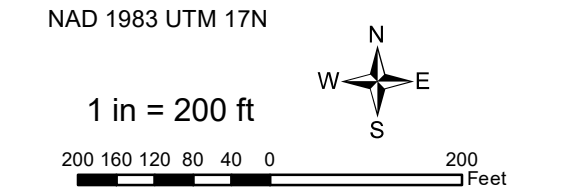
November 2022

Data Sources: WV GIS Technical Center Imagery Service 2020
Note: Map insets are at a scale of 1 inch = 50 feet unless otherwise noted.



- Legend**
- | | |
|-----------------------------|--------------------------|
| ○ Milepost | Stream |
| --- Alignment Centerline | --- Intermittent |
| □ Access Road Temporary LOD | --- Perennial |
| □ Access Road Permanent LOD | --- Ephemeral |
| □ Permanent Facility | ▨ Pond |
| ▨ Limit of Disturbance | Wetland |
| ■ Bore Pit | ▨ Palustrine Forested |
| — Culvert | ▨ Palustrine Emergent |
| | ▨ Palustrine Scrub-Shrub |

Note:
Refer to Table 2 (Streams) and Table 3 (Wetlands) in the Individual Permit Application for information on resource impacts.



Mountain Valley Pipeline Project

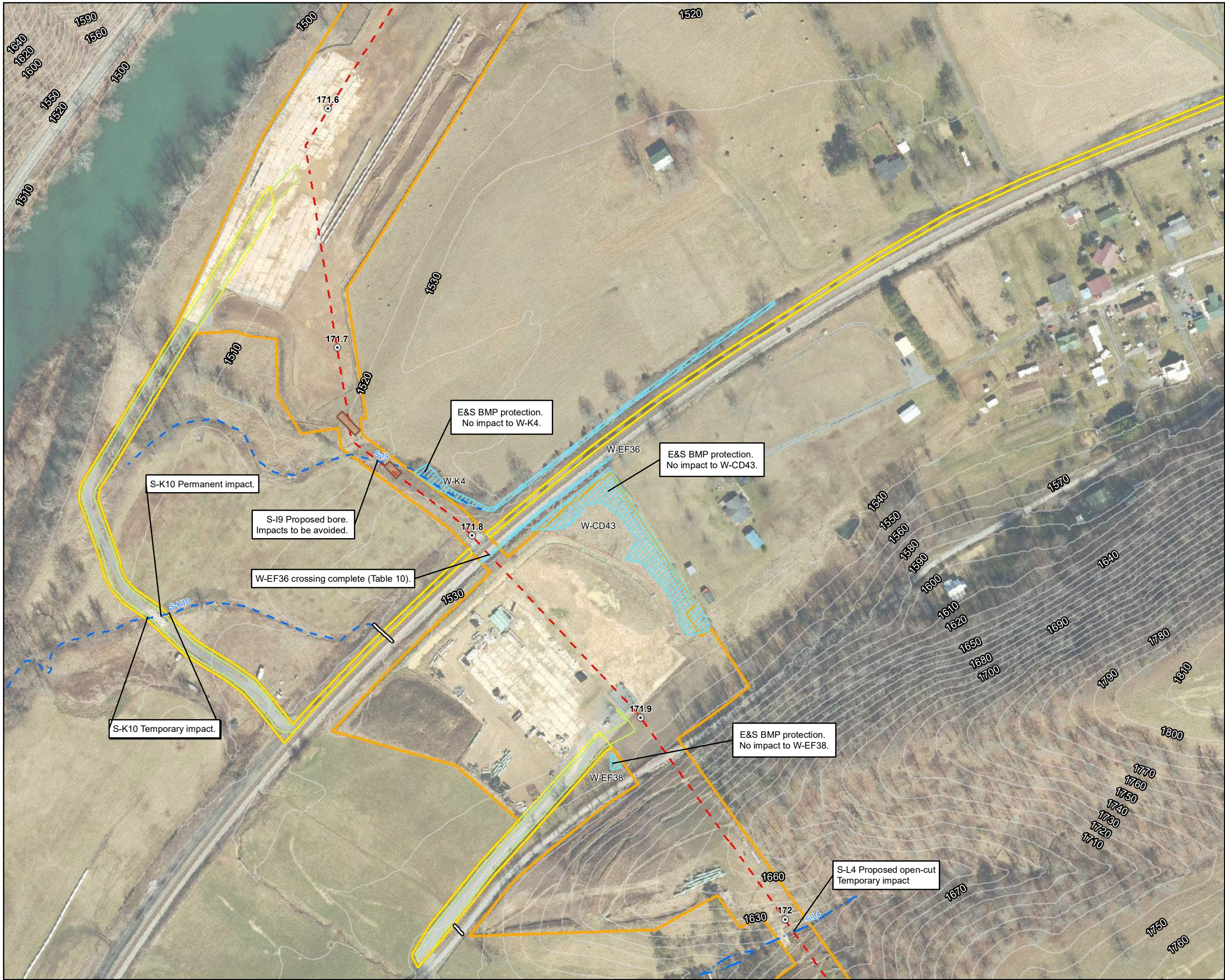


Detail Map Individual Permit Application

Figure 4-464
Summers County, West Virginia

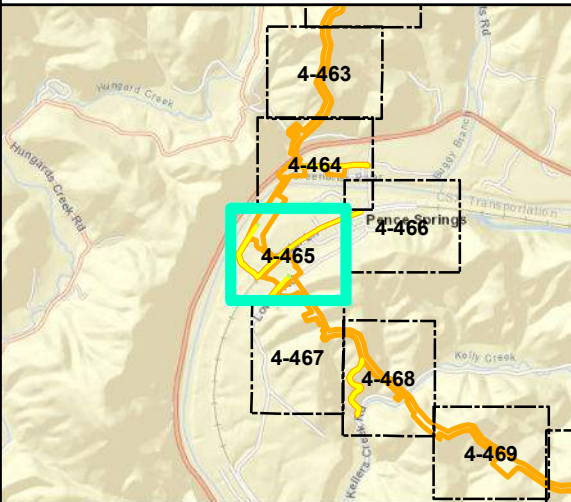
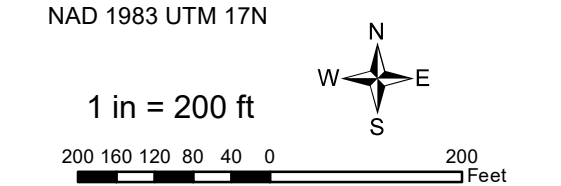
November 2022

Data Sources: WV GIS Technical Center Imagery Service 2020
Note: Map insets are at a scale of 1 inch = 50 feet unless otherwise noted.



- Legend**
- | | |
|-----------------------------|--------------------------|
| ○ Milepost | Stream |
| --- Alignment Centerline | --- Intermittent |
| □ Access Road Temporary LOD | --- Perennial |
| □ Access Road Permanent LOD | --- Ephemeral |
| □ Permanent Facility | ▨ Pond |
| ▨ Limit of Disturbance | Wetland |
| ■ Bore Pit | ▨ Palustrine Forested |
| ▬ Culvert | ▨ Palustrine Emergent |
| | ▨ Palustrine Scrub-Shrub |

Note:
Refer to Table 2 (Streams) and Table 3 (Wetlands) in the Individual Permit Application for information on resource impacts.



Mountain Valley Pipeline Project



**Detail Map
Individual Permit Application**

Figure 4-465
Summers County, West Virginia

November 2022

Data Sources: WV GIS Technical Center Imagery Service 2020
Note: Map insets are at a scale of 1 inch = 50 feet unless otherwise noted.





Legend

Milepost

Alignment Centerline

Access Road Temporary LOD

Access Road Permanent LOD

Permanent Facility

Limit of Disturbance

Bore Pit

Culvert

Intermittent

Perennial

Ephemeral

Pond

Wetland

Palustrine Forested

Palustrine Emergent

Palustrine Scrub-Shrub

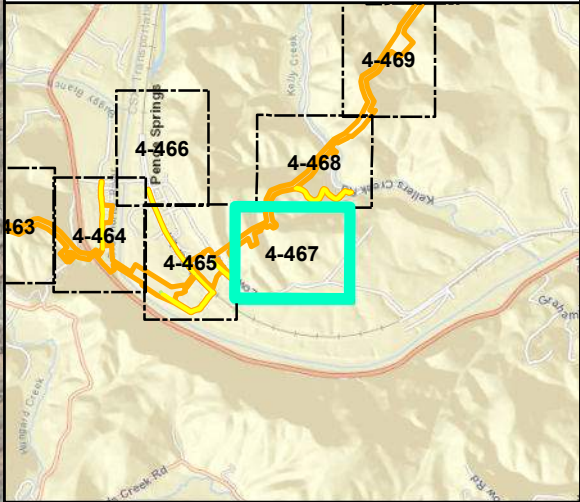
Note:
Refer to Table 2 (Streams) and Table 3 (Wetlands) in the Individual Permit Application for information on resource impacts.

NAD 1983 UTM 17N

1 in = 200 ft

200 160 120 80 40 0

200 Feet



Mountain Valley Pipeline Project

Detail Map
Individual Permit Application

Figure 4-467
Summers County, West Virginia

November 2022

Data Sources: WV GIS Technical Center Imagery Service 2020
Note: Map insets are at a scale of 1 inch = 50 feet unless otherwise noted.



Legend

○ Milepost	Stream
- - - Alignment Centerline	- - - Intermittent
□ Access Road Temporary LOD	- · · · Perennial
□ Access Road Permanent LOD	— Ephemeral
□ Permanent Facility	▨ Pond
▭ Limit of Disturbance	Wetland
■ Bore Pit	▨ Palustrine Forested
— Culvert	▨ Palustrine Emergent
	▨ Palustrine Scrub-Shrub

Note:
Refer to Table 2 (Streams) and Table 3 (Wetlands) in the Individual Permit Application for information on resource impacts.

NAD 1983 UTM 17N

1 in = 200 ft

200 160 120 80 40 0 200 Feet

Mountain Valley Pipeline Project

Detail Map
Individual Permit Application

Figure 4-468
Summers County, West Virginia

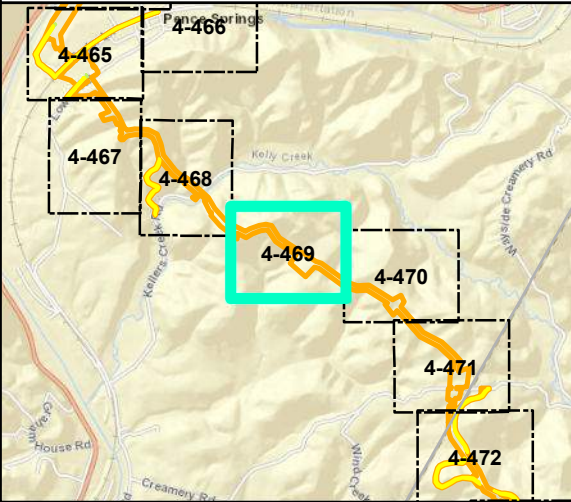
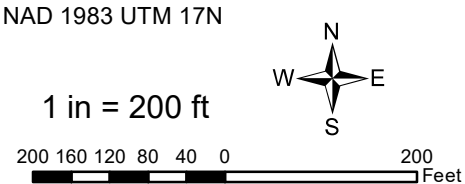
November 2022

Data Sources: WV GIS Technical Center Imagery Service 2020
Note: Map insets are at a scale of 1 inch = 50 feet unless otherwise noted.



- Legend**
- | | |
|-----------------------------|--------------------------|
| ○ Milepost | Stream |
| --- Alignment Centerline | --- Intermittent |
| □ Access Road Temporary LOD | --- Perennial |
| □ Access Road Permanent LOD | --- Ephemeral |
| □ Permanent Facility | ▨ Pond |
| □ Limit of Disturbance | Wetland |
| ■ Bore Pit | ▨ Palustrine Forested |
| == Culvert | ▨ Palustrine Emergent |
| | ▨ Palustrine Scrub-Shrub |

Note:
Refer to Table 2 (Streams) and Table 3 (Wetlands) in the Individual Permit Application for information on resource impacts.



Mountain Valley Pipeline Project



**Detail Map
Individual Permit Application**

Figure 4-469
Summers County, West Virginia

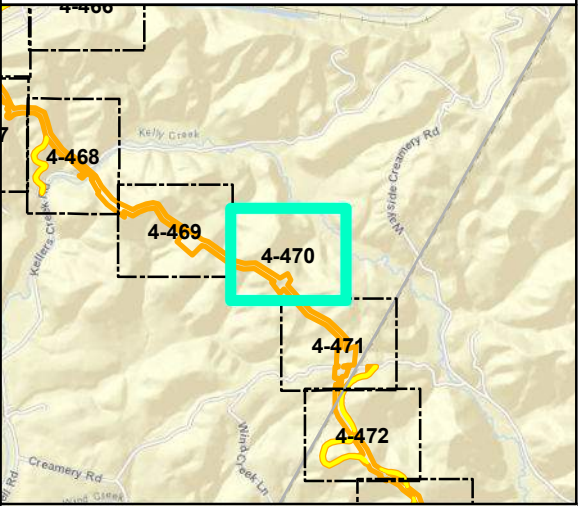
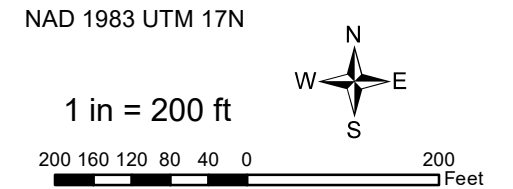
November 2022

Data Sources: WV GIS Technical Center Imagery Service 2020
Note: Map insets are at a scale of 1 inch = 50 feet unless otherwise noted.



- Legend**
- | | |
|-------------------------------|--------------------------|
| ○ Milepost | Stream |
| --- Alignment Centerline | --- Intermittent |
| --- Access Road Temporary LOD | --- Perennial |
| --- Access Road Permanent LOD | --- Ephemeral |
| Permanent Facility | ▨ Pond |
| Limit of Disturbance | Wetland |
| ■ Bore Pit | ▨ Palustrine Forested |
| — Culvert | ▨ Palustrine Emergent |
| | ▨ Palustrine Scrub-Shrub |

Note:
Refer to Table 2 (Streams) and Table 3 (Wetlands) in the Individual Permit Application for information on resource impacts.



Mountain Valley Pipeline Project



Detail Map Individual Permit Application

Figure 4-470
Summers County, West Virginia

November 2022

Data Sources: WV GIS Technical Center Imagery Service 2020
Note: Map insets are at a scale of 1 inch = 50 feet unless otherwise noted.



Legend

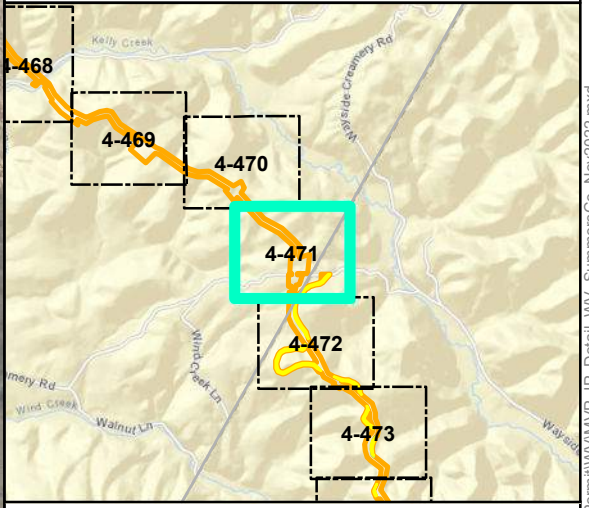
○ Milepost	Stream
- - - Alignment Centerline	- - - Intermittent
□ Access Road Temporary LOD	- · - · - Perennial
□ Access Road Permanent LOD	— Ephemeral
□ Permanent Facility	▨ Pond
▭ Limit of Disturbance	Wetland
■ Bore Pit	▨ Palustrine Forested
— Culvert	▨ Palustrine Emergent
	▨ Palustrine Scrub-Shrub

Note:
Refer to Table 2 (Streams) and Table 3 (Wetlands) in the Individual Permit Application for information on resource impacts.

NAD 1983 UTM 17N

1 in = 200 ft

200 160 120 80 40 0 200 Feet



Mountain Valley Pipeline Project



**Detail Map
Individual Permit Application**

Figure 4-471
Summers County, West Virginia
November 2022

Data Sources: WV GIS Technical Center Imagery Service 2020
Note: Map insets are at a scale of 1 inch = 50 feet unless otherwise noted.