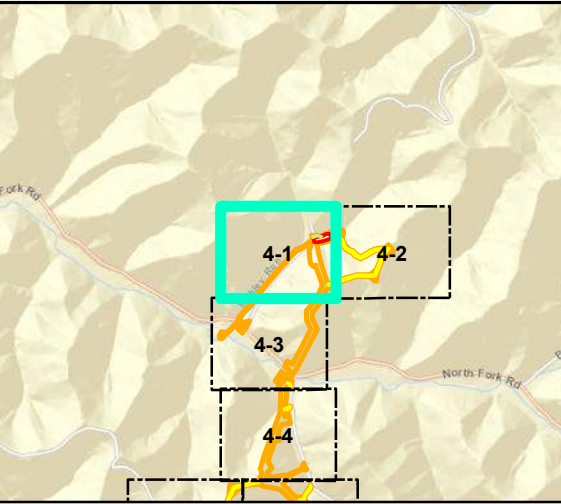
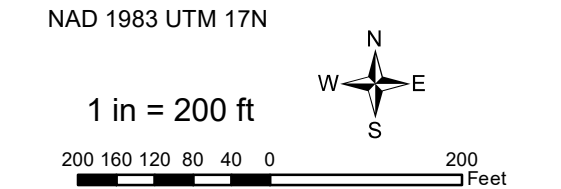


- Legend**
- |                             |                          |
|-----------------------------|--------------------------|
| ○ Milepost                  | Stream                   |
| — Alignment Centerline      | — Intermittent           |
| □ Access Road Temporary LOD | — Perennial              |
| □ Access Road Permanent LOD | — Ephemeral              |
| □ Permanent Facility        | ▨ Pond                   |
| □ Limit of Disturbance      | Wetland                  |
| ■ Bore Pit                  | ▨ Palustrine Forested    |
| — Culvert                   | ▨ Palustrine Emergent    |
|                             | ▨ Palustrine Scrub-Shrub |

Note:  
Refer to Table 2 (Streams) and Table 3 (Wetlands) in the Individual Permit Application for information on resource impacts.



## Mountain Valley Pipeline Project

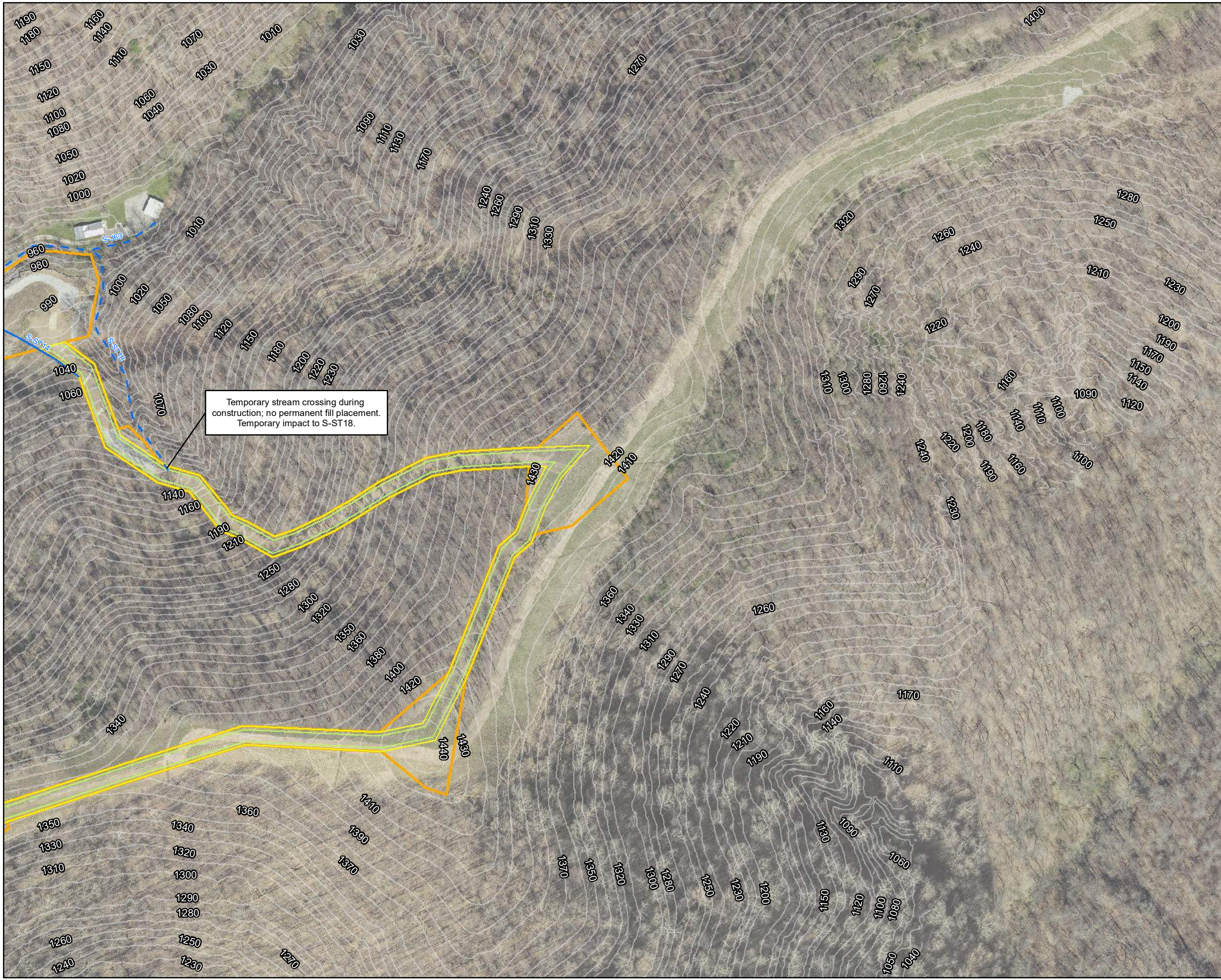


### Detail Map Individual Permit Application

Figure 4-1  
Wetzel County, West Virginia  
November 2022

Data Sources: WV GIS Technical Center Imagery Service 2019  
Note: Map insets are at a scale of 1 inch = 50 feet unless otherwise noted.





**Legend**

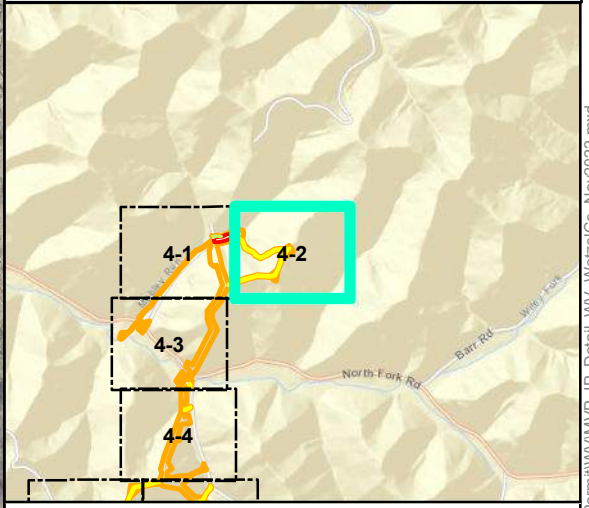
○ Milepost	Stream
--- Alignment Centerline	--- Intermittent
□ Access Road Temporary LOD	--- Perennial
□ Access Road Permanent LOD	--- Ephemeral
□ Permanent Facility	▨ Pond
□ Limit of Disturbance	Wetland
■ Bore Pit	▨ Palustrine Forested
— Culvert	▨ Palustrine Emergent
	▨ Palustrine Scrub-Shrub

Note:  
Refer to Table 2 (Streams) and Table 3 (Wetlands) in the Individual Permit Application for information on resource impacts.


NAD 1983 UTM 17N

1 in = 200 ft

200 160 120 80 40 0 200 Feet



**Mountain Valley Pipeline Project**

 **Mountain Valley** PIPELINE

**Detail Map**  
**Individual Permit Application**

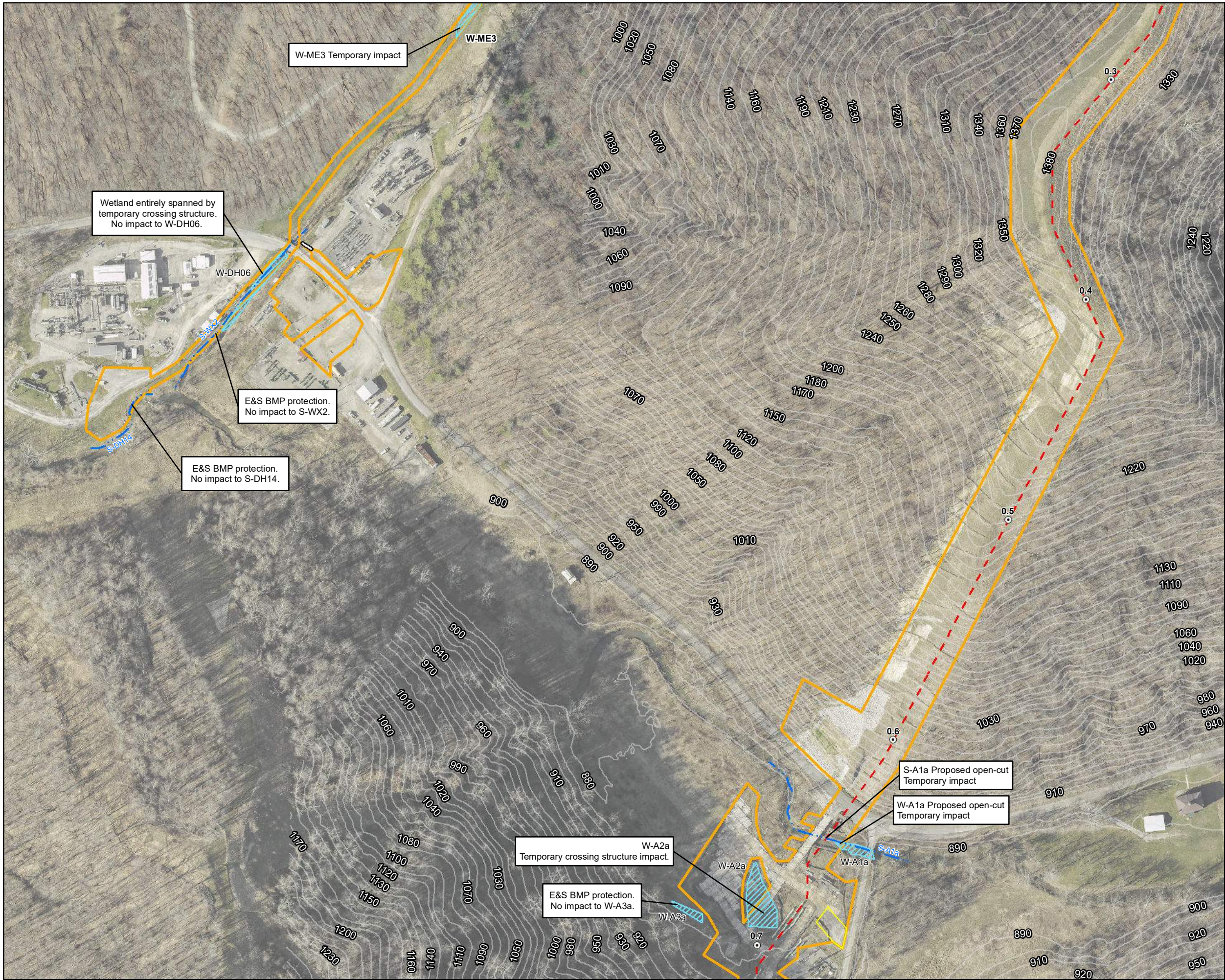
Figure 4-2  
*Wetzel County, West Virginia*

November 2022

Data Sources: WV GIS Technical Center Imagery Service 2019  
Note: Map insets are at a scale of 1 inch = 50 feet unless otherwise noted.

Document Path: P:\GIS\EQ\MVP\Mapdocs\Wetlands\Individual\_Permit\WV\MVP\_IP\_Detail\_WV\_WetzelCo\_Nov2022.mxd





### Legend

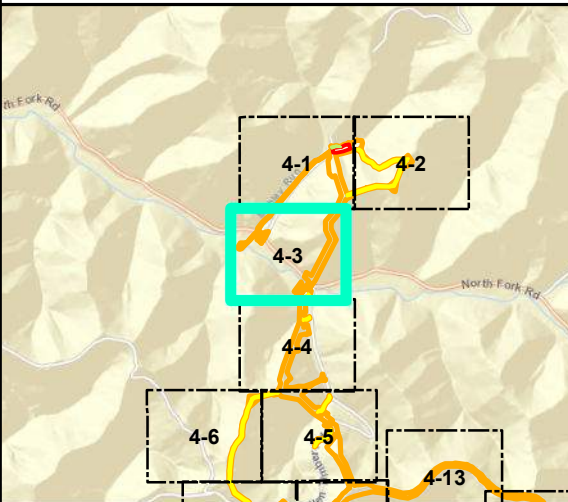
- |                             |                          |
|-----------------------------|--------------------------|
| ○ Milepost                  | Stream                   |
| - - - Alignment Centerline  | - - - Intermittent       |
| □ Access Road Temporary LOD | - · - · - Perennial      |
| □ Access Road Permanent LOD | — Ephemeral              |
| □ Permanent Facility        | ▨ Pond                   |
| ▭ Limit of Disturbance      | Wetland                  |
| ■ Bore Pit                  | ▨ Palustrine Forested    |
| — Culvert                   | ▨ Palustrine Emergent    |
|                             | ▨ Palustrine Scrub-Shrub |

Note:  
Refer to Table 2 (Streams) and Table 3 (Wetlands) in the Individual Permit Application for information on resource impacts.

NAD 1983 UTM 17N

1 in = 200 ft

200 160 120 80 40 0 200 Feet



### Mountain Valley Pipeline Project

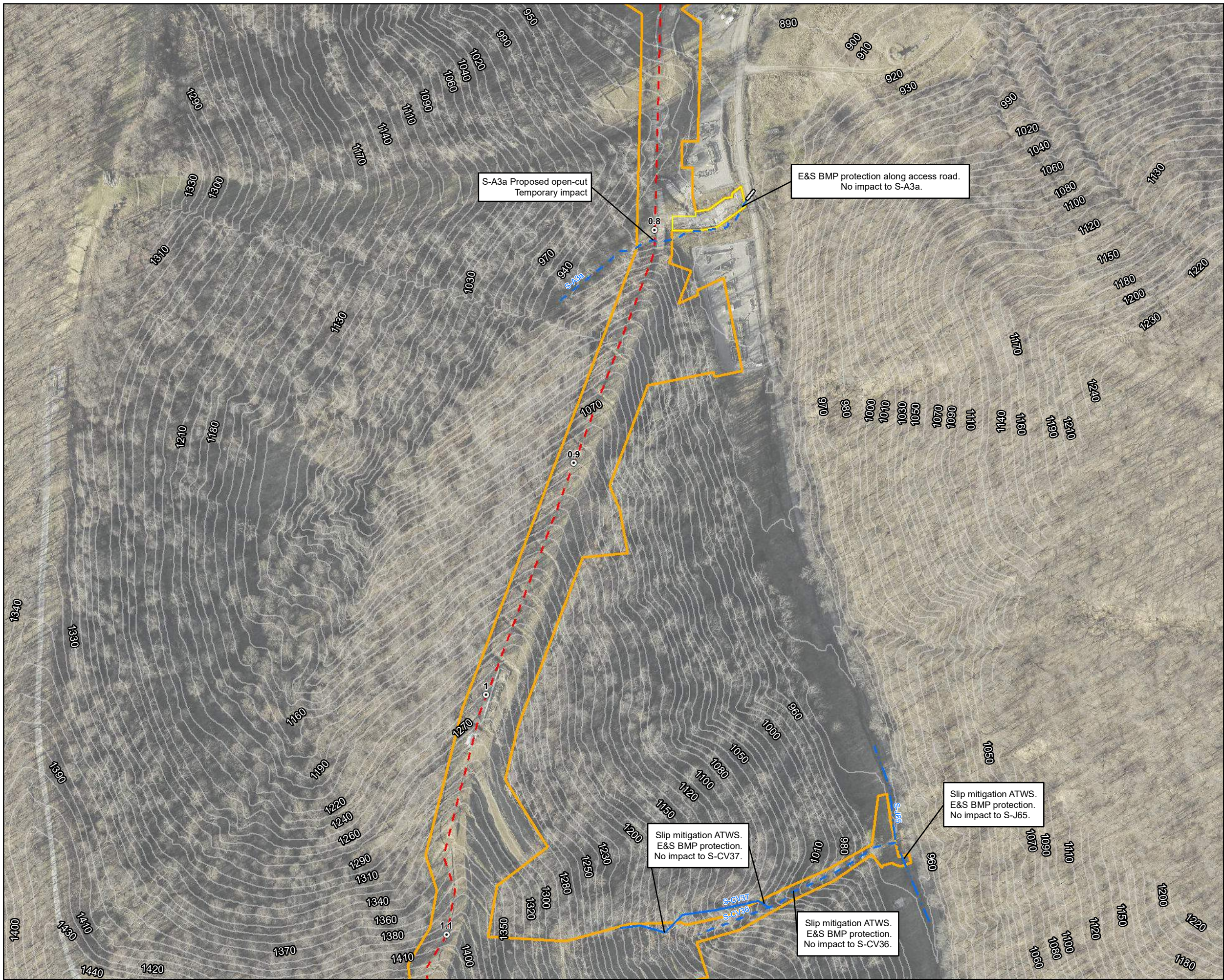


### Detail Map Individual Permit Application

Figure 4-3  
Wetzel County, West Virginia  
November 2022

Data Sources: WV GIS Technical Center Imagery Service 2019  
Note: Map insets are at a scale of 1 inch = 50 feet unless otherwise noted.





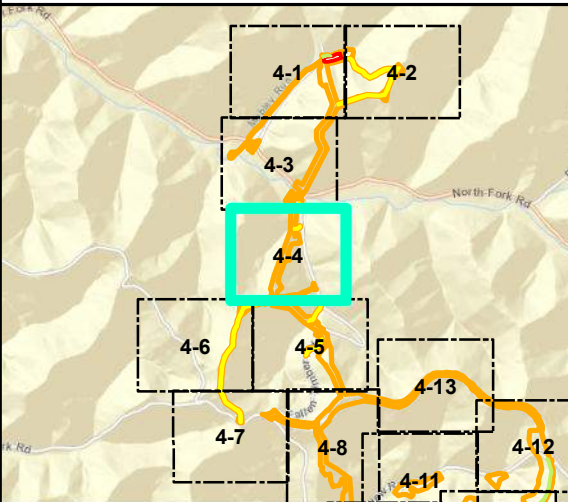
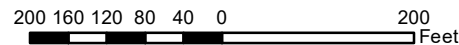
**Legend**

- |                             |                          |
|-----------------------------|--------------------------|
| ○ Milepost                  | Stream                   |
| - - - Alignment Centerline  | - - - Intermittent       |
| □ Access Road Temporary LOD | - · - · - Perennial      |
| □ Access Road Permanent LOD | — Ephemeral              |
| □ Permanent Facility        | ▨ Pond                   |
| □ Limit of Disturbance      | Wetland                  |
| ■ Bore Pit                  | ▨ Palustrine Forested    |
| — Culvert                   | ▨ Palustrine Emergent    |
|                             | ▨ Palustrine Scrub-Shrub |

Note:  
Refer to Table 2 (Streams) and Table 3 (Wetlands) in the Individual Permit Application for information on resource impacts.

NAD 1983 UTM 17N

1 in = 200 ft



**Mountain Valley Pipeline Project**



**Detail Map  
Individual Permit Application**

Figure 4-4  
Wetzel County, West Virginia

November 2022

Data Sources: WV GIS Technical Center Imagery Service 2019  
Note: Map insets are at a scale of 1 inch = 50 feet unless otherwise noted.





**Legend**

Milepost

Alignment Centerline

Access Road Temporary LOD

Access Road Permanent LOD

Permanent Facility

Limit of Disturbance

Bore Pit

Culvert

Intermittent

Perennial

Ephemeral

Pond

Wetland

Palustrine Forested

Palustrine Emergent

Palustrine Scrub-Shrub

Note:

Refer to Table 2 (Streams) and Table 3 (Wetlands) in the Individual Permit Application for information on resource impacts.

NAD 1983 UTM 17N

1 in = 200 ft

200 160 120 80 40 0 200

Feet

N

W

E

S

**Mountain Valley Pipeline Project**

**Mountain Valley**

PIPELINE

Detail Map

Individual Permit Application

Figure 4-5

Wetzel County, West Virginia

November 2022

Data Sources: WV GIS Technical Center Imagery Service 2019

Note: Map insets are at a scale of 1 inch = 50 feet unless otherwise noted.

Document Path: P:\GIS\EQ\MVP\Mapdocs\Wetlands\Individual\_Permit\WV\MVP\_IP\_Detail\_WV\_WetzelCo\_Nov2022.mxd

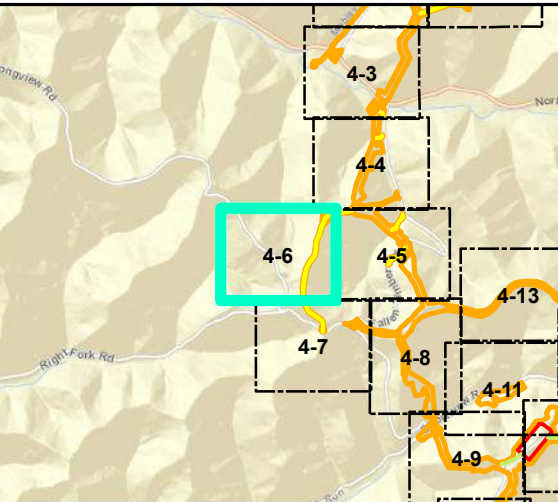
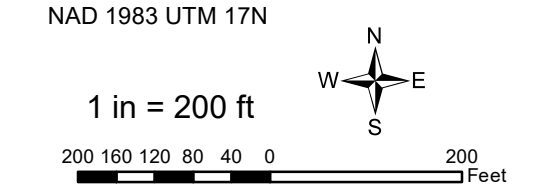




**Legend**

- |                             |                          |
|-----------------------------|--------------------------|
| ○ Milepost                  | Stream                   |
| - - - Alignment Centerline  | - - - Intermittent       |
| □ Access Road Temporary LOD | - · - · - Perennial      |
| □ Access Road Permanent LOD | — Ephemeral              |
| □ Permanent Facility        | ▨ Pond                   |
| □ Limit of Disturbance      | Wetland                  |
| ■ Bore Pit                  | ▨ Palustrine Forested    |
| — Culvert                   | ▨ Palustrine Emergent    |
|                             | ▨ Palustrine Scrub-Shrub |

Note:  
Refer to Table 2 (Streams) and Table 3 (Wetlands) in the Individual Permit Application for information on resource impacts.



**Mountain Valley Pipeline Project**



**Detail Map  
Individual Permit Application**

Figure 4-6  
Wetzel County, West Virginia  
November 2022

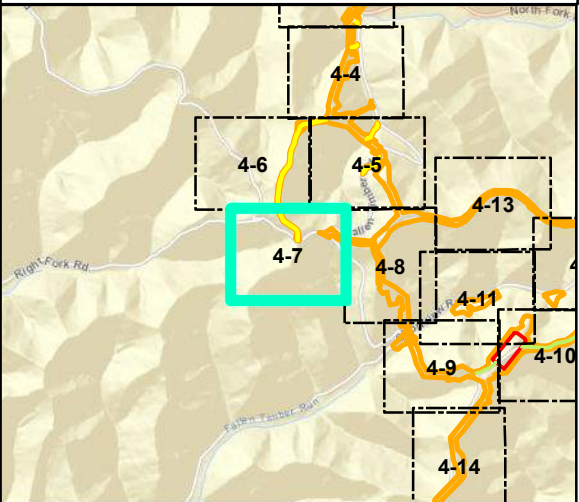
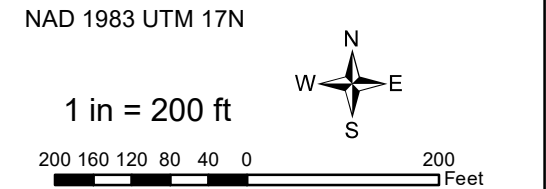
Data Sources: WV GIS Technical Center Imagery Service 2019  
Note: Map insets are at a scale of 1 inch = 50 feet unless otherwise noted.





- Legend**
- |                           |                        |
|---------------------------|------------------------|
| Milepost                  | Stream                 |
| Alignment Centerline      | Intermittent           |
| Access Road Temporary LOD | Perennial              |
| Access Road Permanent LOD | Ephemeral              |
| Permanent Facility        | Pond                   |
| Limit of Disturbance      | Wetland                |
| Bore Pit                  | Palustrine Forested    |
| Culvert                   | Palustrine Emergent    |
|                           | Palustrine Scrub-Shrub |

Note:  
Refer to Table 2 (Streams) and Table 3 (Wetlands) in the Individual Permit Application for information on resource impacts.



## Mountain Valley Pipeline Project



### Detail Map Individual Permit Application

Figure 4-7  
Wetzel County, West Virginia

November 2022

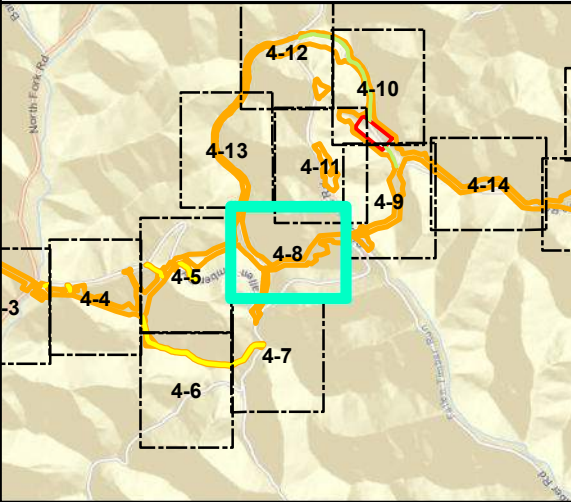
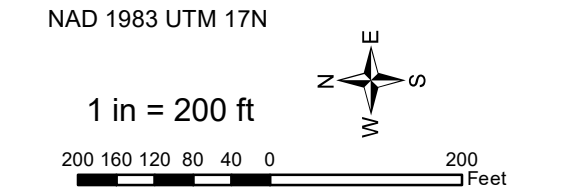
Data Sources: WV GIS Technical Center Imagery Service 2019  
Note: Map insets are at a scale of 1 inch = 50 feet unless otherwise noted.





- Legend**
- |                             |                          |
|-----------------------------|--------------------------|
| ○ Milepost                  | Stream                   |
| — Alignment Centerline      | — Intermittent           |
| — Access Road Temporary LOD | — Perennial              |
| — Access Road Permanent LOD | — Ephemeral              |
| Permanent Facility          | ▨ Pond                   |
| Limit of Disturbance        | Wetland                  |
| ■ Bore Pit                  | ▨ Palustrine Forested    |
| — Culvert                   | ▨ Palustrine Emergent    |
|                             | ▨ Palustrine Scrub-Shrub |

Note:  
Refer to Table 2 (Streams) and Table 3 (Wetlands) in the Individual Permit Application for information on resource impacts.



## Mountain Valley Pipeline Project



### Detail Map Individual Permit Application

Figure 4-8  
Wetzel County, West Virginia  
November 2022

Data Sources: WV GIS Technical Center Imagery Service 2019  
Note: Map insets are at a scale of 1 inch = 50 feet unless otherwise noted.





**Legend**

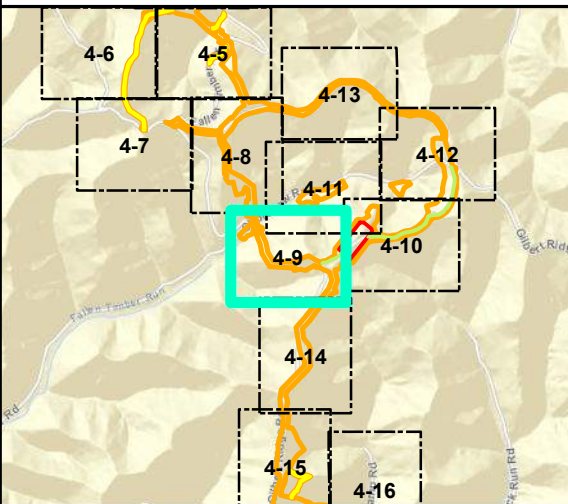
- |                             |                          |
|-----------------------------|--------------------------|
| ○ Milepost                  | Stream                   |
| --- Alignment Centerline    | --- Intermittent         |
| □ Access Road Temporary LOD | --- Perennial            |
| □ Access Road Permanent LOD | --- Ephemeral            |
| □ Permanent Facility        | ▨ Pond                   |
| □ Limit of Disturbance      | Wetland                  |
| ■ Bore Pit                  | ▨ Palustrine Forested    |
| — Culvert                   | ▨ Palustrine Emergent    |
|                             | ▨ Palustrine Scrub-Shrub |

Note:  
Refer to Table 2 (Streams) and Table 3 (Wetlands) in the Individual Permit Application for information on resource impacts.

NAD 1983 UTM 17N

1 in = 200 ft

200 160 120 80 40 0 200 Feet



**Mountain Valley Pipeline Project**



**Detail Map  
Individual Permit Application**

Figure 4-9  
Wetzel County, West Virginia

November 2022

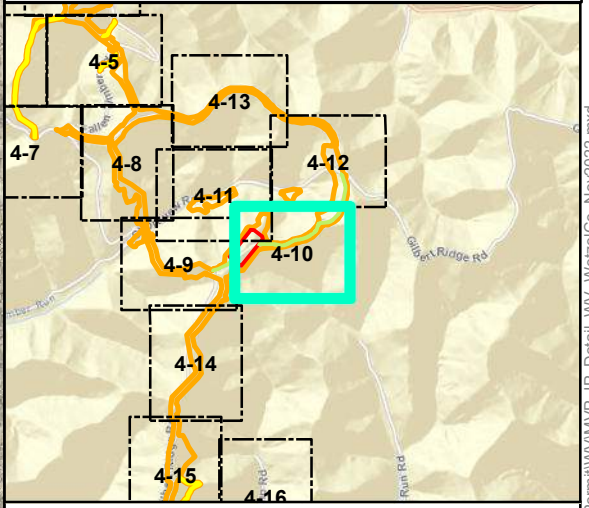
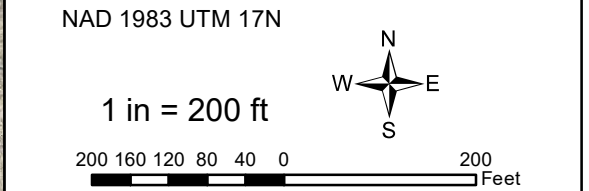
Data Sources: WV GIS Technical Center Imagery Service 2019  
Note: Map insets are at a scale of 1 inch = 50 feet unless otherwise noted.





- Legend**
- |                               |                          |
|-------------------------------|--------------------------|
| ○ Milepost                    | Stream                   |
| --- Alignment Centerline      | --- Intermittent         |
| --- Access Road Temporary LOD | --- Perennial            |
| --- Access Road Permanent LOD | --- Ephemeral            |
| Permanent Facility            | ▨ Pond                   |
| Limit of Disturbance          | Wetland                  |
| ■ Bore Pit                    | ▨ Palustrine Forested    |
| — Culvert                     | ▨ Palustrine Emergent    |
|                               | ▨ Palustrine Scrub-Shrub |

Note:  
Refer to Table 2 (Streams) and Table 3 (Wetlands) in the Individual Permit Application for information on resource impacts.



**Mountain Valley Pipeline Project**



**Detail Map  
Individual Permit Application**

Figure 4-10  
*Wetzel County, West Virginia*  
November 2022

Data Sources: WV GIS Technical Center Imagery Service 2019  
Note: Map insets are at a scale of 1 inch = 50 feet unless otherwise noted.





### Legend

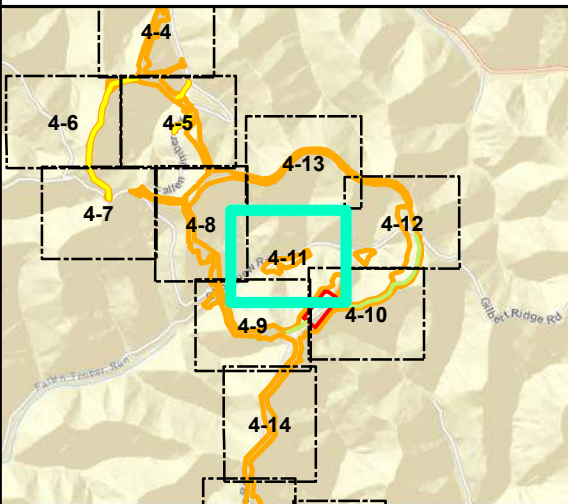
- |                             |                          |
|-----------------------------|--------------------------|
| ⊙ Milepost                  | Stream                   |
| — Alignment Centerline      | — Intermittent           |
| □ Access Road Temporary LOD | — Perennial              |
| □ Access Road Permanent LOD | — Ephemeral              |
| □ Permanent Facility        | ▨ Pond                   |
| □ Limit of Disturbance      | Wetland                  |
| ■ Bore Pit                  | ▨ Palustrine Forested    |
| — Culvert                   | ▨ Palustrine Emergent    |
|                             | ▨ Palustrine Scrub-Shrub |

Note:  
Refer to Table 2 (Streams) and Table 3 (Wetlands) in the Individual Permit Application for information on resource impacts.

NAD 1983 UTM 17N

1 in = 200 ft

200 160 120 80 40 0 200 Feet



### Mountain Valley Pipeline Project



### Detail Map Individual Permit Application

Figure 4-11  
Wetzel County, West Virginia

November 2022

Data Sources: WV GIS Technical Center Imagery Service 2019  
Note: Map insets are at a scale of 1 inch = 50 feet unless otherwise noted.





**Legend**

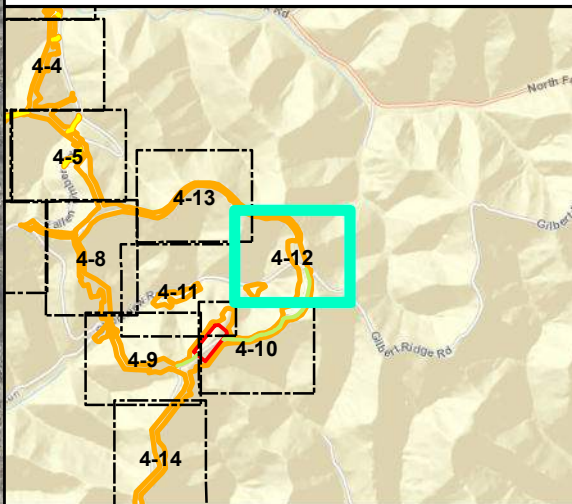
- |                             |                          |
|-----------------------------|--------------------------|
| ⊙ Milepost                  | Stream                   |
| - - - Alignment Centerline  | - - - Intermittent       |
| □ Access Road Temporary LOD | - · · · Perennial        |
| □ Access Road Permanent LOD | — Ephemeral              |
| □ Permanent Facility        | ▨ Pond                   |
| ▭ Limit of Disturbance      | Wetland                  |
| ■ Bore Pit                  | ▨ Palustrine Forested    |
| ▬ Culvert                   | ▨ Palustrine Emergent    |
|                             | ▨ Palustrine Scrub-Shrub |

Note:  
Refer to Table 2 (Streams) and Table 3 (Wetlands) in the Individual Permit Application for information on resource impacts.

NAD 1983 UTM 17N

1 in = 200 ft

200 160 120 80 40 0 200 Feet



**Mountain Valley Pipeline Project**



**Detail Map  
Individual Permit Application**

Figure 4-12  
*Wetzel County, West Virginia*

November 2022

Data Sources: WV GIS Technical Center Imagery Service 2019  
Note: Map insets are at a scale of 1 inch = 50 feet unless otherwise noted.





**Legend**

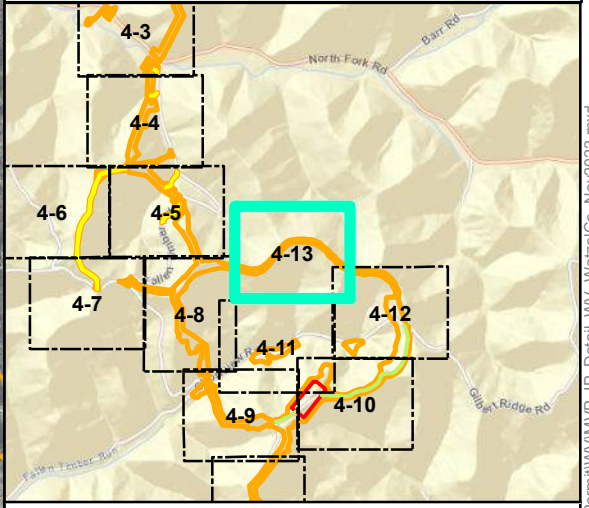
⊙ Milepost	Stream
— Alignment Centerline	— Intermittent
□ Access Road Temporary LOD	— Perennial
□ Access Road Permanent LOD	— Ephemeral
□ Permanent Facility	▨ Pond
□ Limit of Disturbance	Wetland
■ Bore Pit	▨ Palustrine Forested
▬ Culvert	▨ Palustrine Emergent
	▨ Palustrine Scrub-Shrub

Note:  
Refer to Table 2 (Streams) and Table 3 (Wetlands) in the Individual Permit Application for information on resource impacts.

NAD 1983 UTM 17N

1 in = 200 ft

200 160 120 80 40 0 200 Feet



**Mountain Valley Pipeline Project**



**Detail Map  
Individual Permit Application**

Figure 4-13  
*Wetzel County, West Virginia*  
November 2022

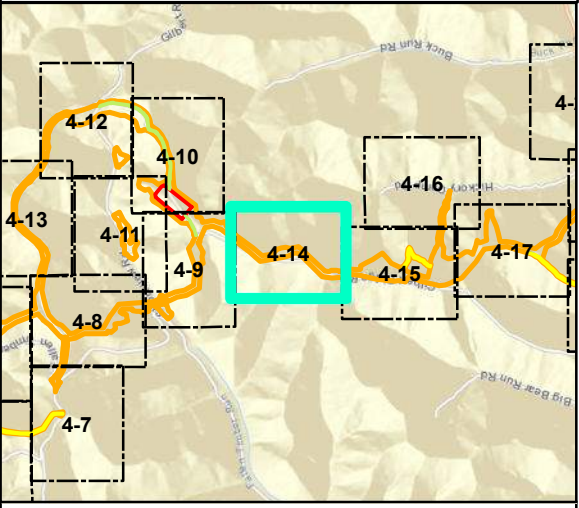
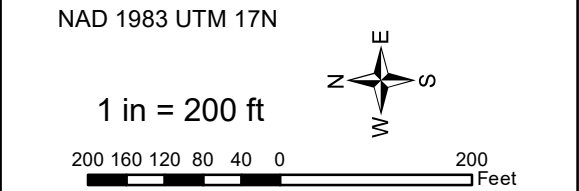
Data Sources: WV GIS Technical Center Imagery Service 2019  
Note: Map insets are at a scale of 1 inch = 50 feet unless otherwise noted.





- Legend**
- |                             |                          |
|-----------------------------|--------------------------|
| ○ Milepost                  | Stream                   |
| --- Alignment Centerline    | --- Intermittent         |
| □ Access Road Temporary LOD | --- Perennial            |
| □ Access Road Permanent LOD | --- Ephemeral            |
| □ Permanent Facility        | ▨ Pond                   |
| □ Limit of Disturbance      | Wetland                  |
| ■ Bore Pit                  | ▨ Palustrine Forested    |
| == Culvert                  | ▨ Palustrine Emergent    |
|                             | ▨ Palustrine Scrub-Shrub |

Note:  
Refer to Table 2 (Streams) and Table 3 (Wetlands) in the Individual Permit Application for information on resource impacts.



**Mountain Valley Pipeline Project**

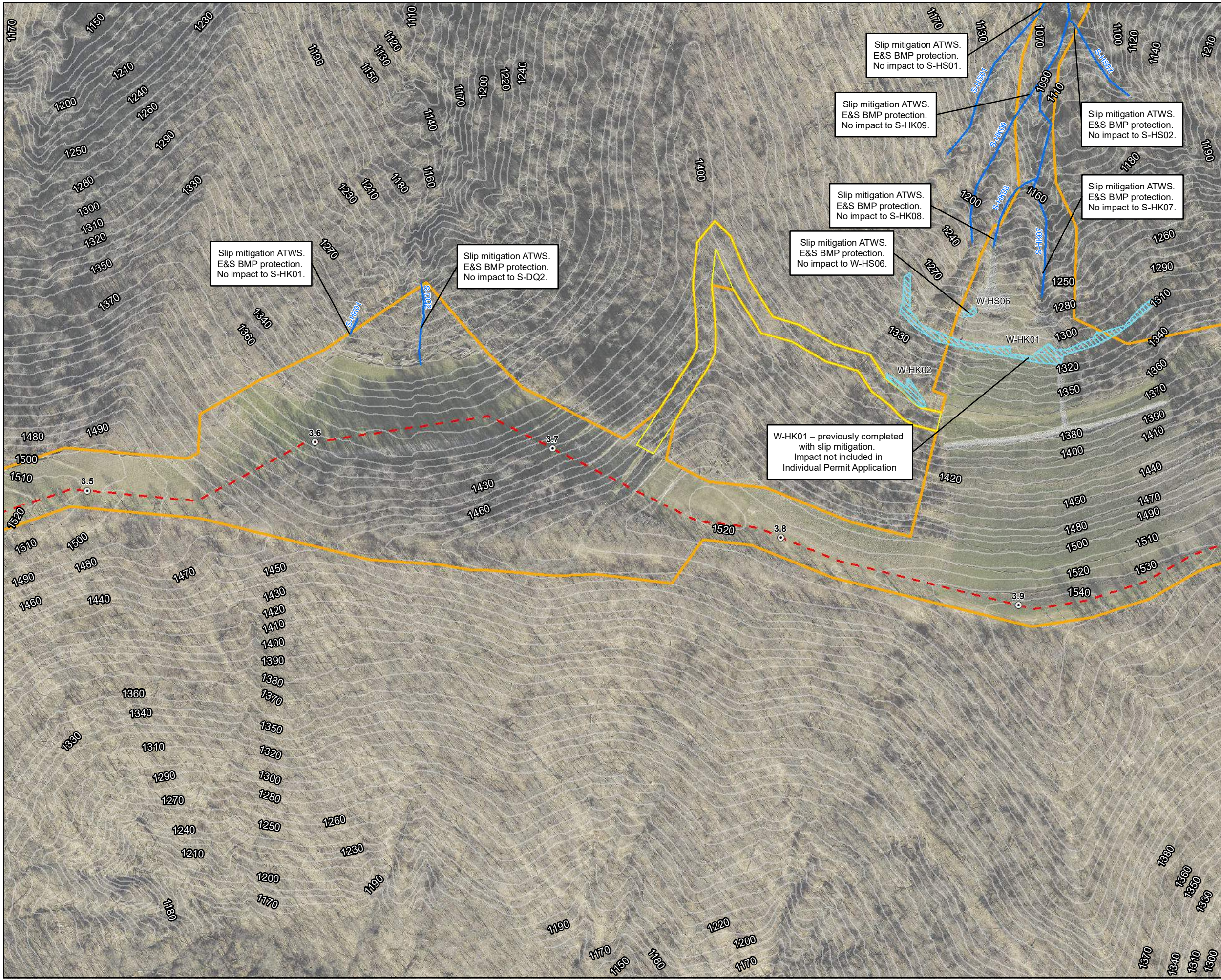
**Detail Map**  
**Individual Permit Application**

Figure 4-14  
*Wetzel County, West Virginia*

November 2022

Data Sources: WV GIS Technical Center Imagery Service 2019  
Note: Map insets are at a scale of 1 inch = 50 feet unless otherwise noted.





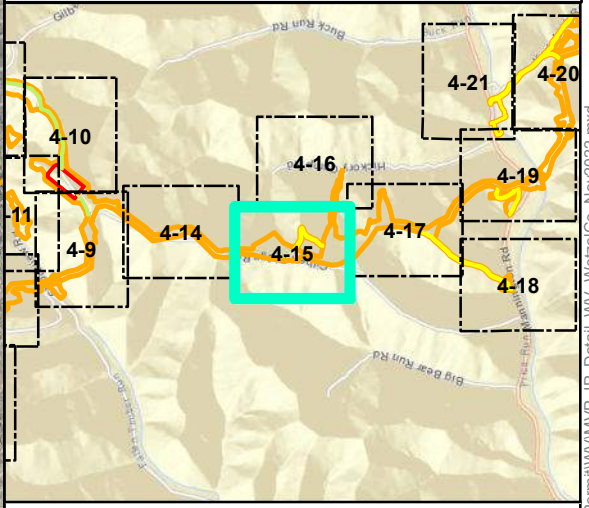
**Legend**

Milepost	Stream
Alignment Centerline	Intermittent
Access Road Temporary LOD	Perennial
Access Road Permanent LOD	Ephemeral
Permanent Facility	Pond
Limit of Disturbance	<b>Wetland</b>
Bore Pit	Palustrine Forested
Culvert	Palustrine Emergent
	Palustrine Scrub-Shrub

Note:  
Refer to Table 2 (Streams) and Table 3 (Wetlands) in the Individual Permit Application for information on resource impacts.

NAD 1983 UTM 17N

1 in = 200 ft



**Mountain Valley Pipeline Project**



**Detail Map  
Individual Permit Application**

Figure 4-15  
Wetzel County, West Virginia  
November 2022

Data Sources: WV GIS Technical Center Imagery Service 2019  
Note: Map insets are at a scale of 1 inch = 50 feet unless otherwise noted.

Document Path: P:\GIS\EQ\MVP\Mapdocs\Wetlands\Individual\_Permit\WV\MVP\_IP\_Detail\_WV\_WetzelCo\_Nov2022.mxd





**Legend**

○ Milepost	Stream
— Alignment Centerline	— Intermittent
□ Access Road Temporary LOD	— Perennial
□ Access Road Permanent LOD	— Ephemeral
□ Permanent Facility	▨ Pond
□ Limit of Disturbance	Wetland
■ Bore Pit	▨ Palustrine Forested
— Culvert	▨ Palustrine Emergent
	▨ Palustrine Scrub-Shrub

Note:  
Refer to Table 2 (Streams) and Table 3 (Wetlands) in the Individual Permit Application for information on resource impacts.

NAD 1983 UTM 17N

1 in = 200 ft

200 160 120 80 40 0 200 Feet

**Mountain Valley Pipeline Project**

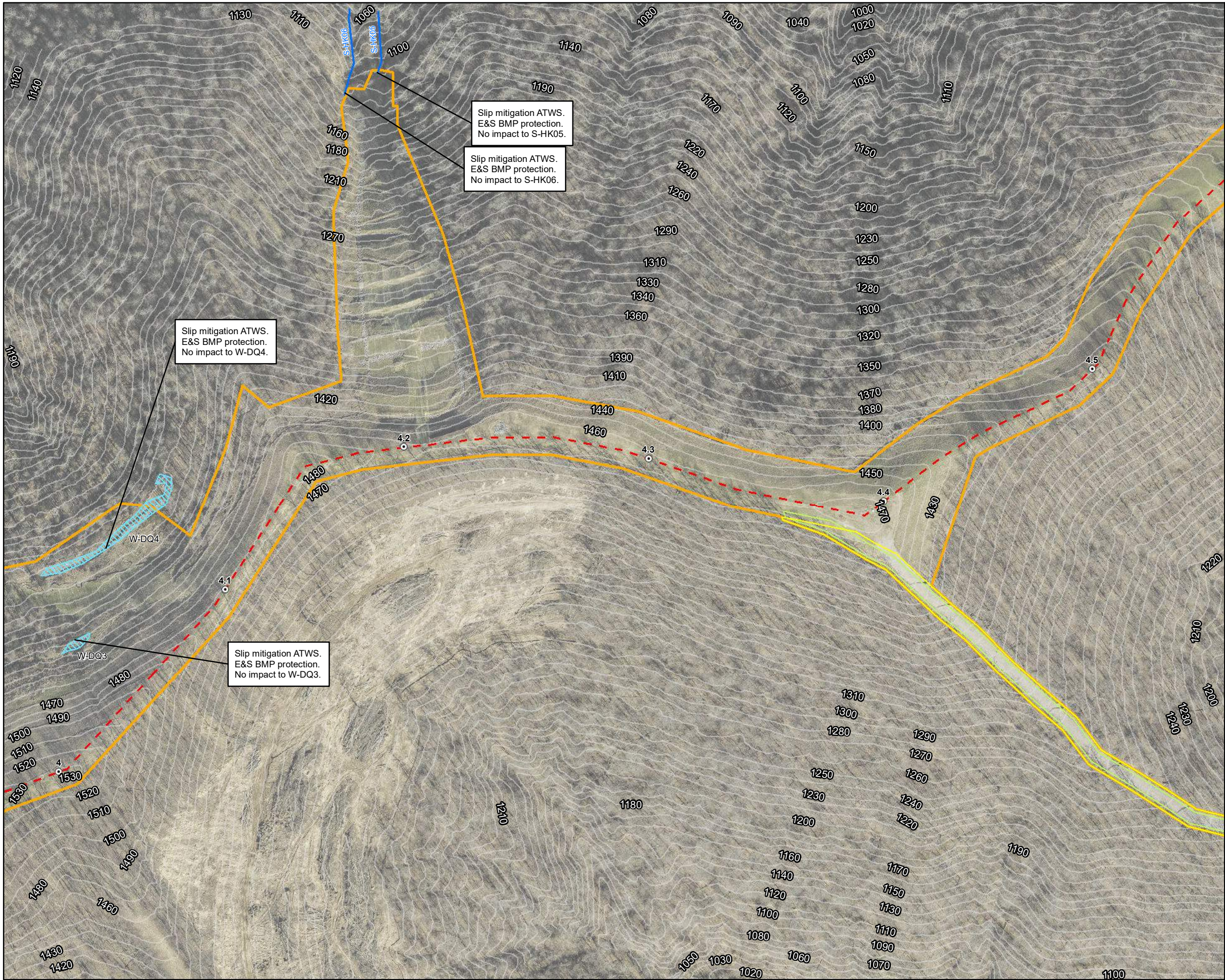
**Detail Map**  
**Individual Permit Application**

Figure 4-16  
*Wetzel County, West Virginia*

November 2022

Data Sources: WV GIS Technical Center Imagery Service 2019  
Note: Map insets are at a scale of 1 inch = 50 feet unless otherwise noted.





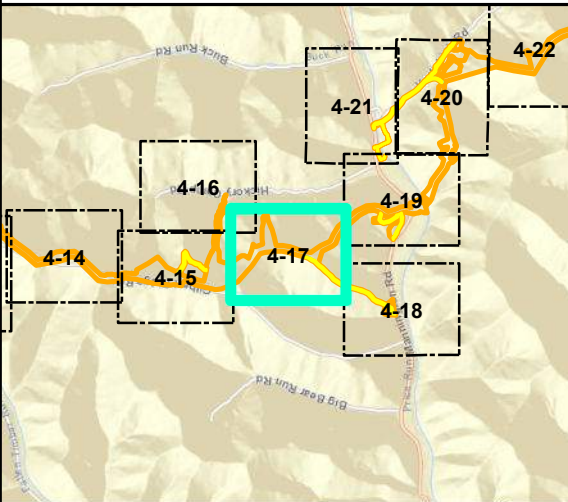
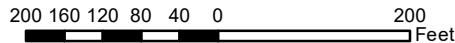
**Legend**

- |                             |                          |
|-----------------------------|--------------------------|
| ○ Milepost                  | Stream                   |
| --- Alignment Centerline    | --- Intermittent         |
| □ Access Road Temporary LOD | --- Perennial            |
| □ Access Road Permanent LOD | --- Ephemeral            |
| □ Permanent Facility        | ▨ Pond                   |
| □ Limit of Disturbance      | Wetland                  |
| ■ Bore Pit                  | ▨ Palustrine Forested    |
| — Culvert                   | ▨ Palustrine Emergent    |
|                             | ▨ Palustrine Scrub-Shrub |

Note:  
Refer to Table 2 (Streams) and Table 3 (Wetlands) in the Individual Permit Application for information on resource impacts.

NAD 1983 UTM 17N

1 in = 200 ft



**Mountain Valley Pipeline Project**



**Detail Map  
Individual Permit Application**

Figure 4-17  
Wetzel County, West Virginia

November 2022

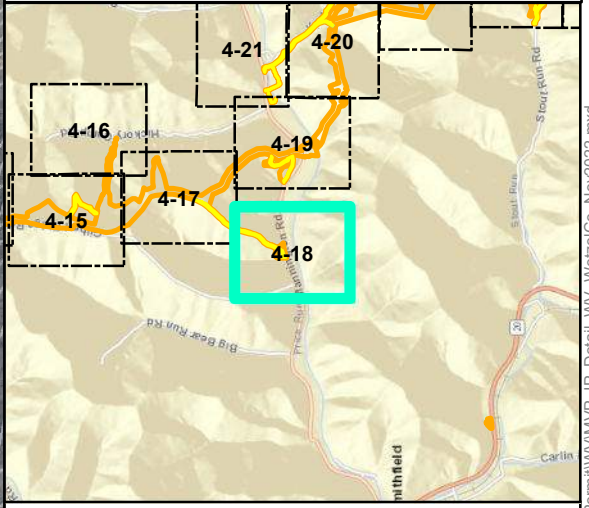
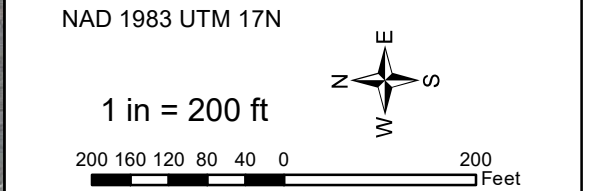
Data Sources: WV GIS Technical Center Imagery Service 2019  
Note: Map insets are at a scale of 1 inch = 50 feet unless otherwise noted.





- Legend**
- |                             |                          |
|-----------------------------|--------------------------|
| ○ Milepost                  | Stream                   |
| — Alignment Centerline      | — Intermittent           |
| — Access Road Temporary LOD | — Perennial              |
| — Access Road Permanent LOD | — Ephemeral              |
| Permanent Facility          | ▨ Pond                   |
| Limit of Disturbance        | Wetland                  |
| Bore Pit                    | ▨ Palustrine Forested    |
| — Culvert                   | ▨ Palustrine Emergent    |
|                             | ▨ Palustrine Scrub-Shrub |

Note:  
Refer to Table 2 (Streams) and Table 3 (Wetlands) in the Individual Permit Application for information on resource impacts.



**Mountain Valley Pipeline Project**

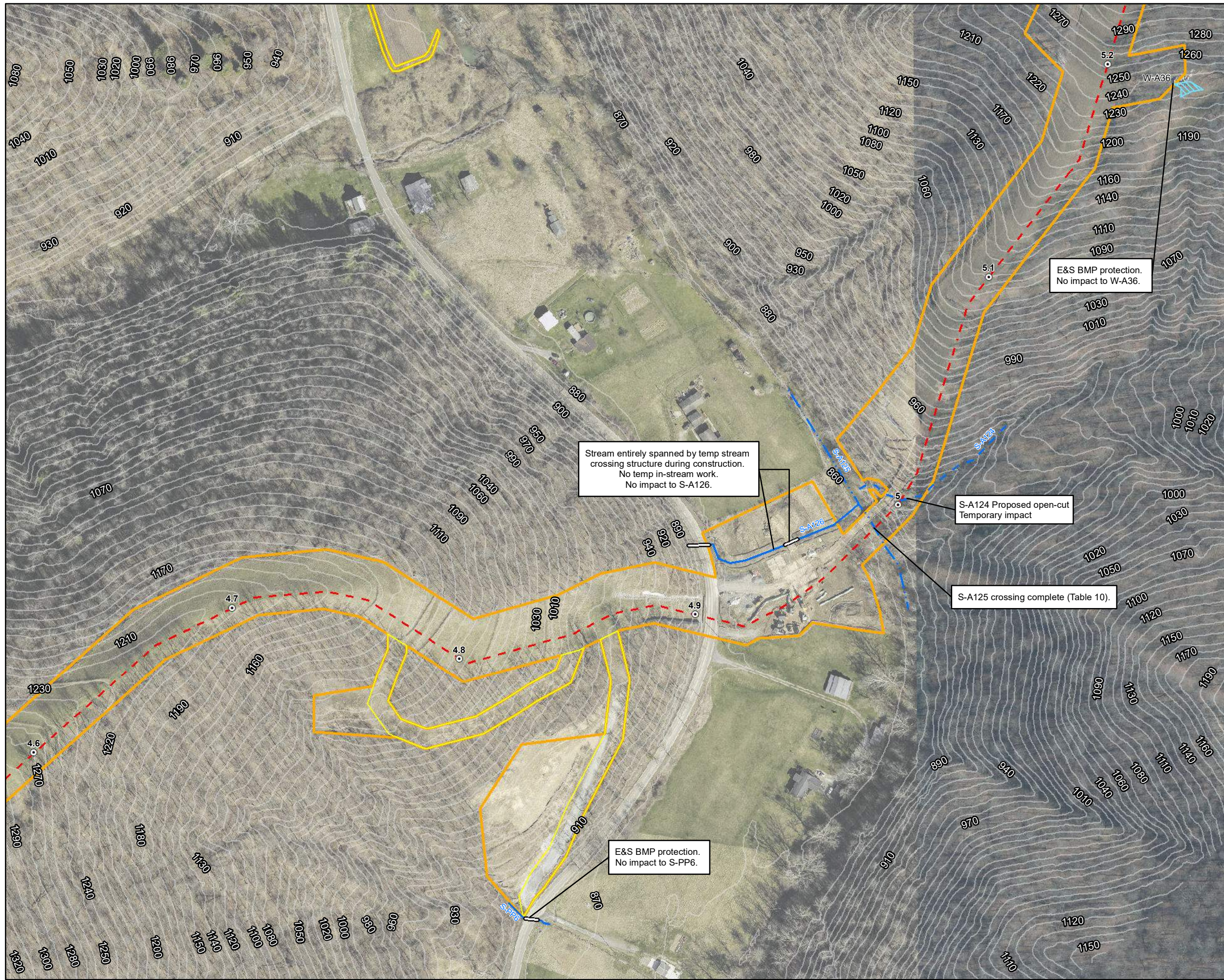


**Detail Map  
Individual Permit Application**

Figure 4-18  
*Wetzel County, West Virginia*  
November 2022

Data Sources: WV GIS Technical Center Imagery Service 2019  
Note: Map insets are at a scale of 1 inch = 50 feet unless otherwise noted.





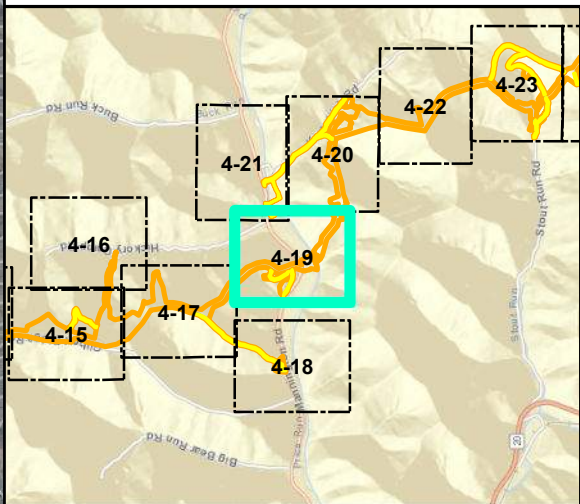
- Legend**
- |                               |                            |
|-------------------------------|----------------------------|
| ○ Milepost                    | Stream                     |
| --- Alignment Centerline      | --- Intermittent           |
| --- Access Road Temporary LOD | --- Perennial              |
| --- Access Road Permanent LOD | --- Ephemeral              |
| Permanent Facility            | --- Pond                   |
| Limit of Disturbance          | Wetland                    |
| Bore Pit                      | --- Palustrine Forested    |
| --- Culvert                   | --- Palustrine Emergent    |
|                               | --- Palustrine Scrub-Shrub |

Note:  
Refer to Table 2 (Streams) and Table 3 (Wetlands) in the Individual Permit Application for information on resource impacts.

NAD 1983 UTM 17N

1 in = 200 ft

200 160 120 80 40 0 200 Feet



## Mountain Valley Pipeline Project



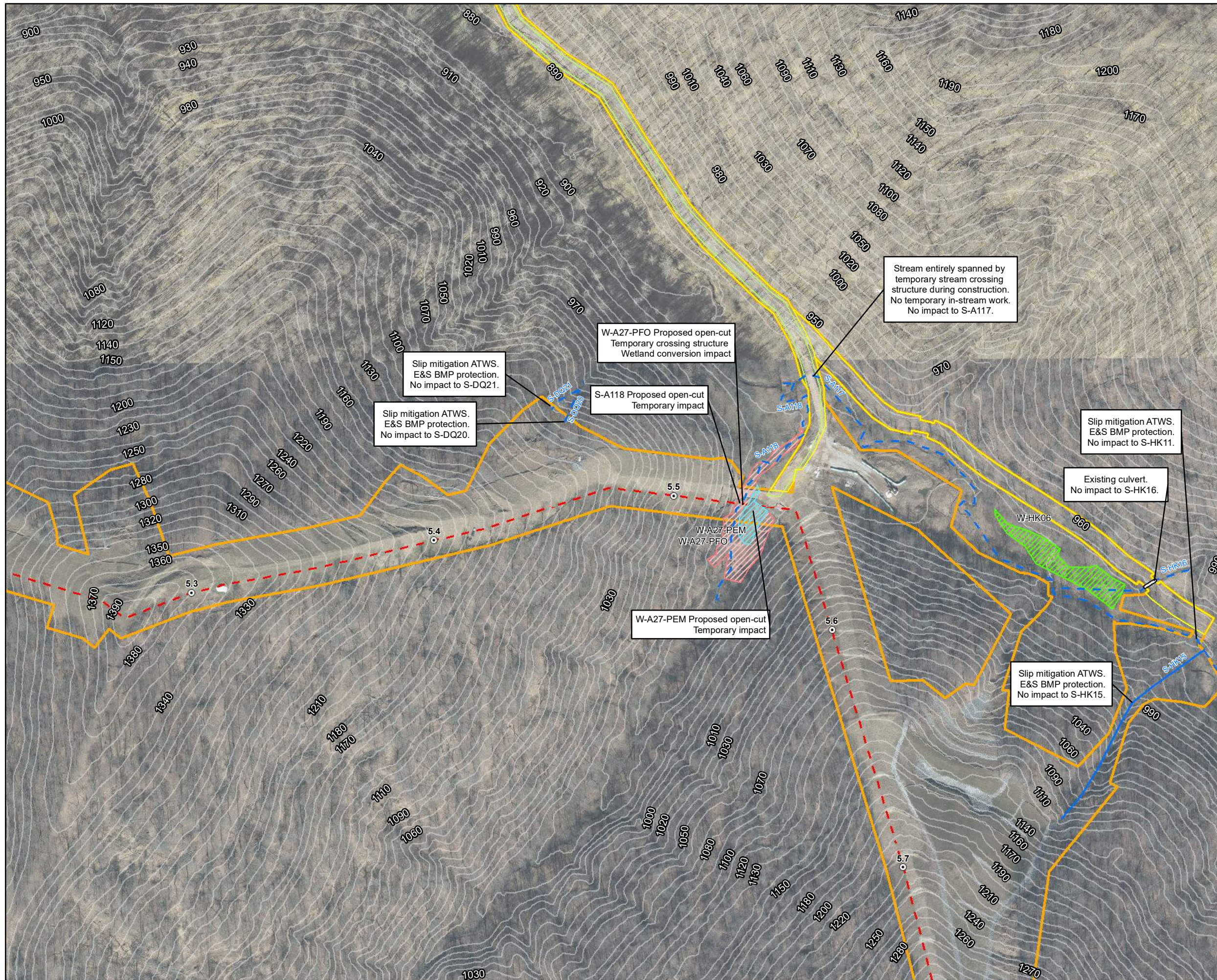
### Detail Map Individual Permit Application

Figure 4-19  
Wetzel County, West Virginia

November 2022

Data Sources: WV GIS Technical Center Imagery Service 2019  
Note: Map insets are at a scale of 1 inch = 50 feet unless otherwise noted.





**Legend**

○ Milepost	Stream
— Alignment Centerline	— Intermittent
— Access Road Temporary LOD	— Perennial
— Access Road Permanent LOD	— Ephemeral
Permanent Facility	▨ Pond
Limit of Disturbance	Wetland
Bore Pit	▨ Palustrine Forested
— Culvert	▨ Palustrine Emergent
	▨ Palustrine Scrub-Shrub

Note:  
Refer to Table 2 (Streams) and Table 3 (Wetlands) in the Individual Permit Application for information on resource impacts.

NAD 1983 UTM 17N

1 in = 200 ft

200 160 120 80 40 0 200 Feet

**Mountain Valley Pipeline Project**

**Mountain Valley PIPELINE**

**Detail Map**  
**Individual Permit Application**

Figure 4-20  
*Wetzel County, West Virginia*

November 2022

Data Sources: WV GIS Technical Center Imagery Service 2019  
Note: Map insets are at a scale of 1 inch = 50 feet unless otherwise noted.





**Legend**

○ Milepost	Stream
— Alignment Centerline	— Intermittent
□ Access Road Temporary LOD	— Perennial
□ Access Road Permanent LOD	— Ephemeral
□ Permanent Facility	▨ Pond
□ Limit of Disturbance	Wetland
■ Bore Pit	▨ Palustrine Forested
— Culvert	▨ Palustrine Emergent
	▨ Palustrine Scrub-Shrub

Note:  
Refer to Table 2 (Streams) and Table 3 (Wetlands) in the Individual Permit Application for information on resource impacts.

NAD 1983 UTM 17N

1 in = 200 ft

200 160 120 80 40 0 200 Feet

Mountain Valley Pipeline Project

**Mountain Valley**  
PIPELINE

**Detail Map**  
Individual Permit Application

Figure 4-21  
Wetzel County, West Virginia

November 2022

Data Sources: WV GIS Technical Center Imagery Service 2019  
Note: Map insets are at a scale of 1 inch = 50 feet unless otherwise noted.





- Legend**
- Milepost

Alignment Centerline

Access Road Temporary LOD

Access Road Permanent LOD

Permanent Facility

Limit of Disturbance

Bore Pit

Culvert

Stream

Intermittent

Perennial

Ephemeral

Pond

Wetland

Palustrine Forested

Palustrine Emergent

Palustrine Scrub-Shrub

Note:  
Refer to Table 2 (Streams) and Table 3 (Wetlands) in the Individual Permit Application for information on resource impacts.

NAD 1983 UTM 17N

1 in = 200 ft

200

160

120

80

40

0

200

Feet

N

E

S

W

Mountain Valley Pipeline Project

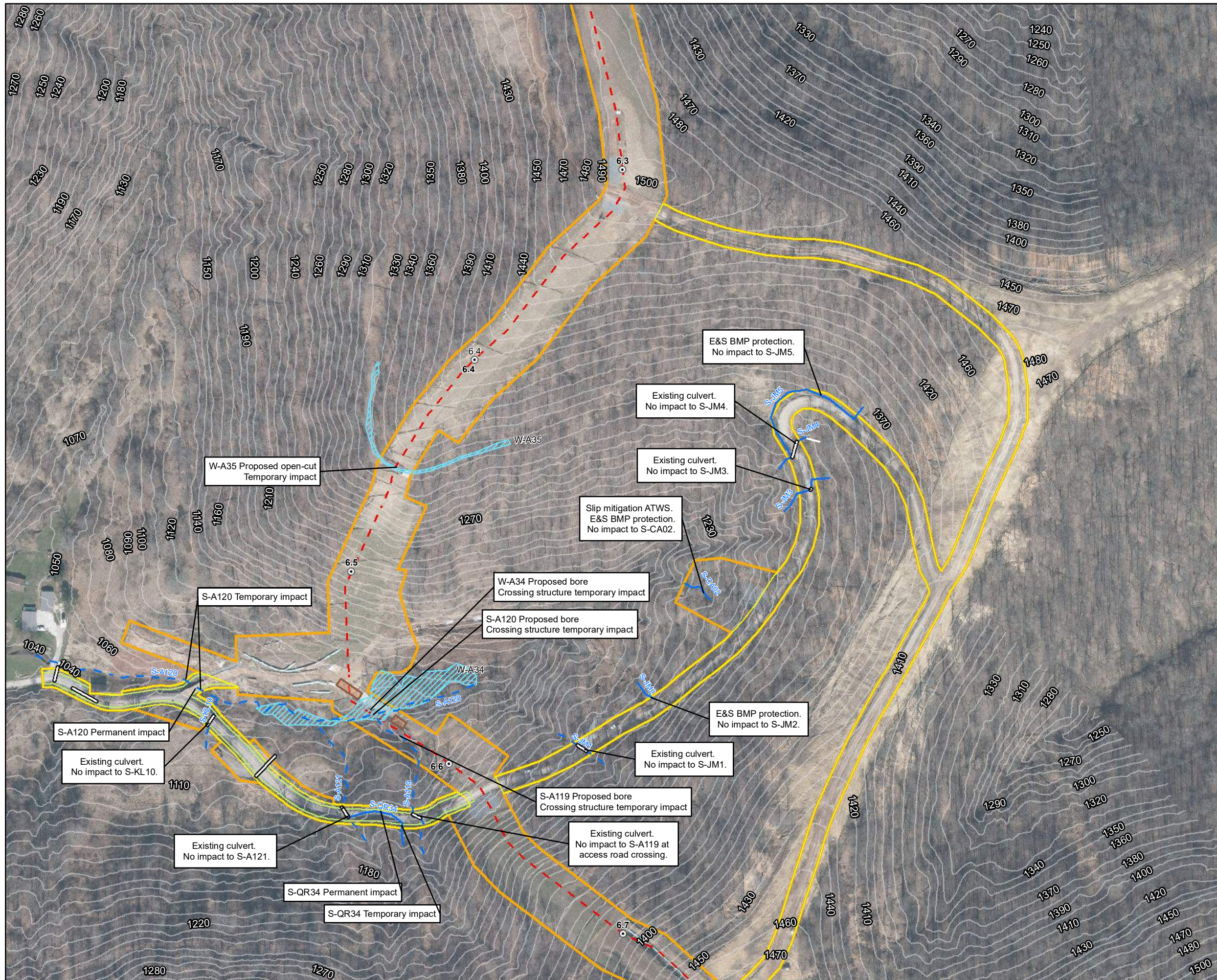
Detail Map  
Individual Permit Application

Figure 4-22  
Wetzel County, West Virginia  
November 2022

Data Sources: WV GIS Technical Center Imagery Service 2019  
Note: Map insets are at a scale of 1 inch = 50 feet unless otherwise noted.

Document Path: P:\GIS\REQ\MVP\Mapdocs\Wetlands\Individual\_Permit\WV\_MVP\_IP\_Detail\_WV\_WetzelCo\_Nov2022.mxd





### Legend

○ Milepost	Stream
--- Alignment Centerline	--- Intermittent
□ Access Road Temporary LOD	--- Perennial
□ Access Road Permanent LOD	--- Ephemeral
□ Permanent Facility	▨ Pond
□ Limit of Disturbance	Wetland
■ Bore Pit	▨ Palustrine Forested
▬ Culvert	▨ Palustrine Emergent
	▨ Palustrine Scrub-Shrub

Note:  
Refer to Table 2 (Streams) and Table 3 (Wetlands) in the Individual Permit Application for information on resource impacts.

NAD 1983 UTM 17N

1 in = 200 ft

200 160 120 80 40 0 200 Feet

## Mountain Valley Pipeline Project

### Detail Map

### Individual Permit Application

Figure 4-23  
Wetzel County, West Virginia

November 2022

Data Sources: WV GIS Technical Center Imagery Service 2019  
Note: Map insets are at a scale of 1 inch = 50 feet unless otherwise noted.





**Legend**

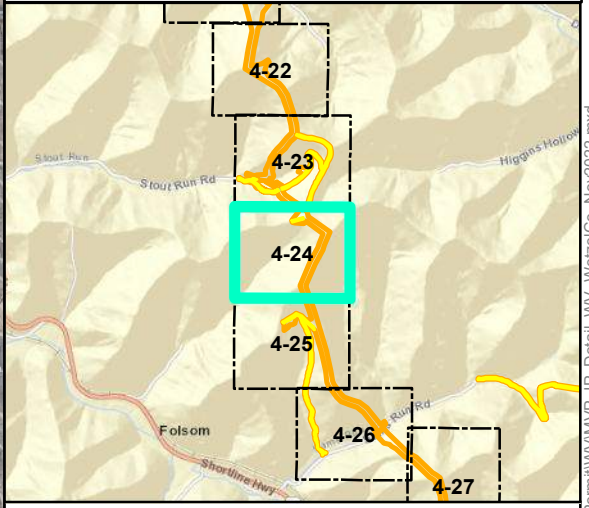
○ Milepost	Stream
--- Alignment Centerline	--- Intermittent
--- Access Road Temporary LOD	--- Perennial
--- Access Road Permanent LOD	--- Ephemeral
Permanent Facility	▨ Pond
Limit of Disturbance	Wetland
Bore Pit	▨ Palustrine Forested
Culvert	▨ Palustrine Emergent
	▨ Palustrine Scrub-Shrub

Note:  
Refer to Table 2 (Streams) and Table 3 (Wetlands) in the Individual Permit Application for information on resource impacts.

NAD 1983 UTM 17N

1 in = 200 ft

200 160 120 80 40 0 200 Feet



**Mountain Valley Pipeline Project**



**Detail Map  
Individual Permit Application**

Figure 4-24  
Wetzel County, West Virginia  
November 2022

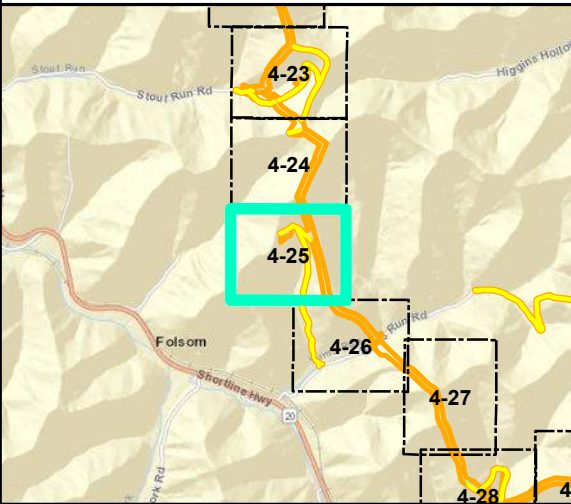
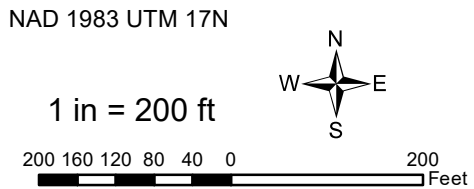
Data Sources: WV GIS Technical Center Imagery Service 2019  
Note: Map insets are at a scale of 1 inch = 50 feet unless otherwise noted.





- Legend**
- |                             |                          |
|-----------------------------|--------------------------|
| ○ Milepost                  | Stream                   |
| --- Alignment Centerline    | --- Intermittent         |
| □ Access Road Temporary LOD | --- Perennial            |
| □ Access Road Permanent LOD | --- Ephemeral            |
| □ Permanent Facility        | ▨ Pond                   |
| □ Limit of Disturbance      | Wetland                  |
| ■ Bore Pit                  | ▨ Palustrine Forested    |
| ▬ Culvert                   | ▨ Palustrine Emergent    |
|                             | ▨ Palustrine Scrub-Shrub |

Note:  
Refer to Table 2 (Streams) and Table 3 (Wetlands) in the Individual Permit Application for information on resource impacts.



## Mountain Valley Pipeline Project



### Detail Map Individual Permit Application

Figure 4-25  
Wetzel County, West Virginia

November 2022

Data Sources: WV GIS Technical Center Imagery Service 2019  
Note: Map insets are at a scale of 1 inch = 50 feet unless otherwise noted.





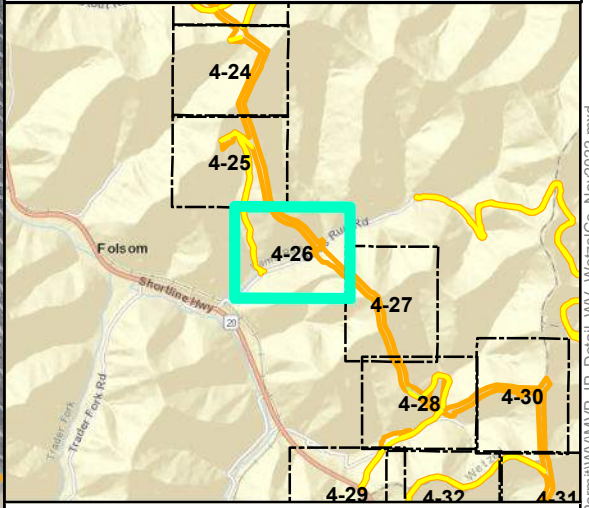
**Legend**

○ Milepost	Stream
- - - Alignment Centerline	- - - Intermittent
□ Access Road Temporary LOD	- · - · - Perennial
□ Access Road Permanent LOD	— Ephemeral
□ Permanent Facility	▨ Pond
▭ Limit of Disturbance	Wetland
■ Bore Pit	▨ Palustrine Forested
— Culvert	▨ Palustrine Emergent
	▨ Palustrine Scrub-Shrub

Note:  
Refer to Table 2 (Streams) and Table 3 (Wetlands) in the Individual Permit Application for information on resource impacts.

NAD 1983 UTM 17N

1 in = 200 ft



**Mountain Valley Pipeline Project**

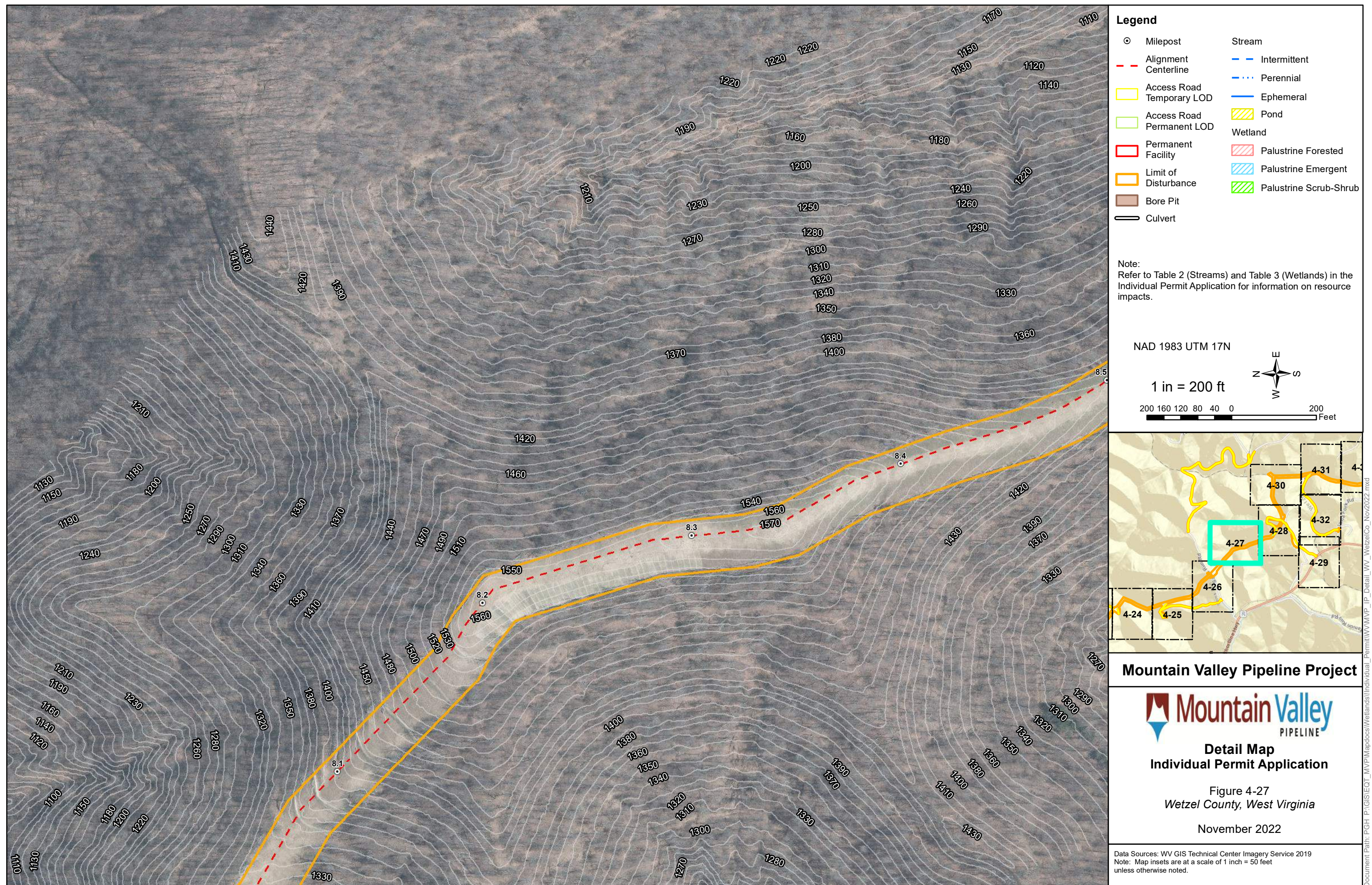


**Detail Map  
Individual Permit Application**

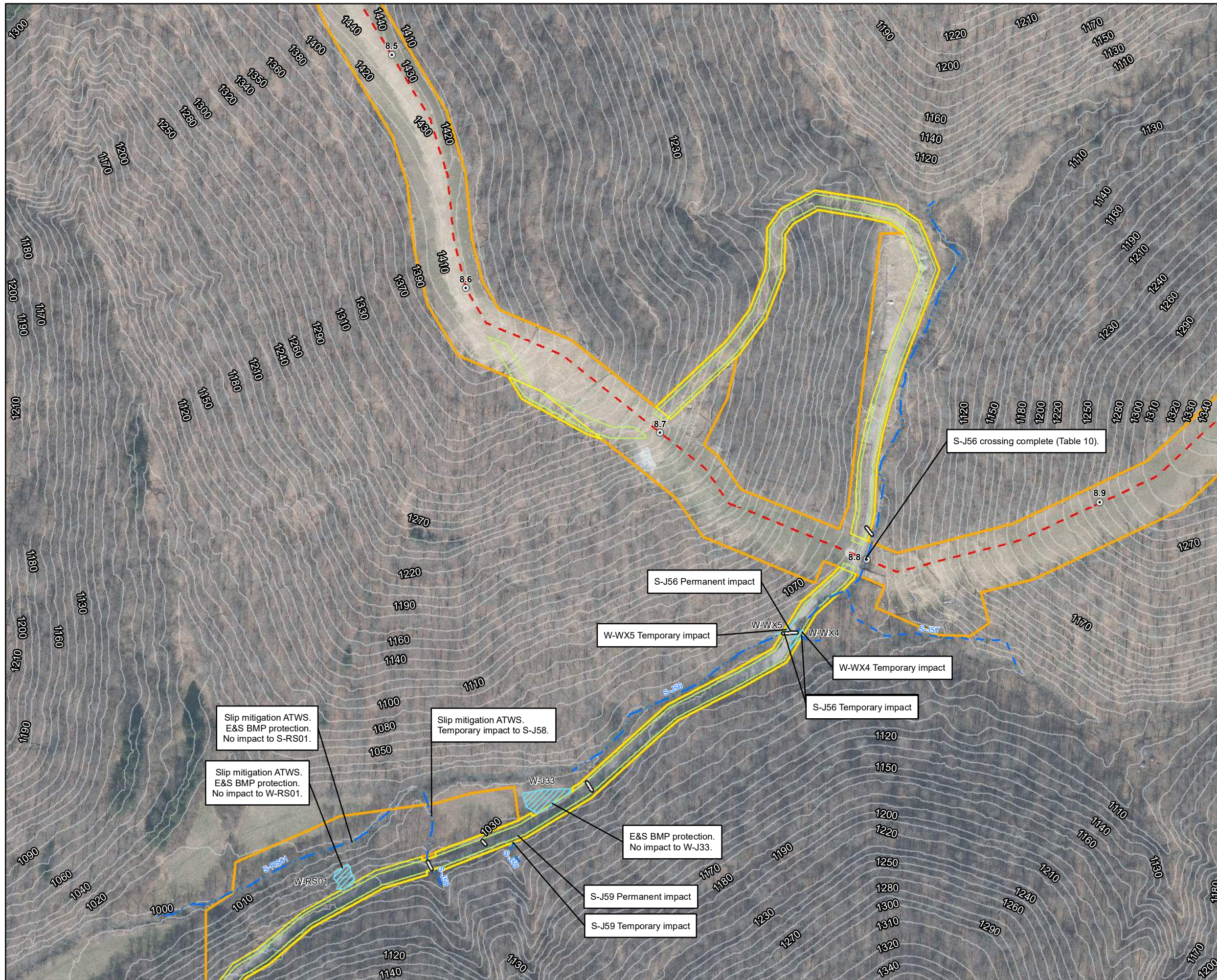
Figure 4-26  
*Wetzel County, West Virginia*  
November 2022

Data Sources: WV GIS Technical Center Imagery Service 2019  
Note: Map insets are at a scale of 1 inch = 50 feet unless otherwise noted.



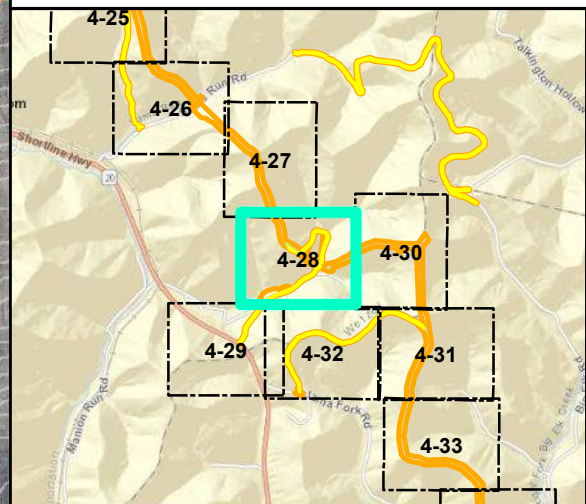
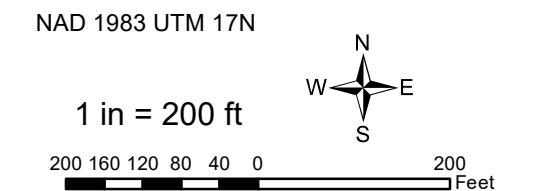






- Legend**
- |                             |                          |
|-----------------------------|--------------------------|
| ○ Milepost                  | Stream                   |
| - - - Alignment Centerline  | - - - Intermittent       |
| □ Access Road Temporary LOD | - · - · - Perennial      |
| □ Access Road Permanent LOD | — Ephemeral              |
| □ Permanent Facility        | ▨ Pond                   |
| ▭ Limit of Disturbance      | Wetland                  |
| ■ Bore Pit                  | ▨ Palustrine Forested    |
| — Culvert                   | ▨ Palustrine Emergent    |
|                             | ▨ Palustrine Scrub-Shrub |

Note:  
Refer to Table 2 (Streams) and Table 3 (Wetlands) in the Individual Permit Application for information on resource impacts.



## Mountain Valley Pipeline Project



### Detail Map Individual Permit Application

Figure 4-28  
Wetzel County, West Virginia

November 2022

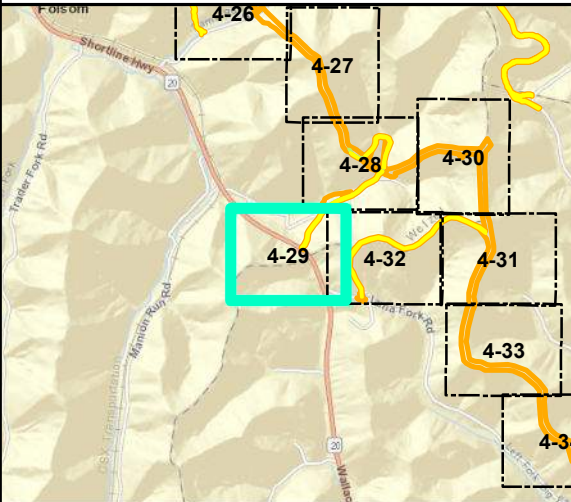
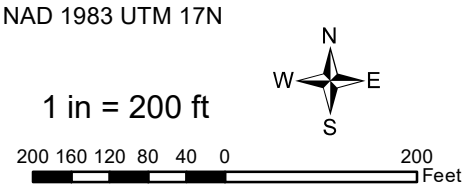
Data Sources: WV GIS Technical Center Imagery Service 2019  
Note: Map insets are at a scale of 1 inch = 50 feet unless otherwise noted.





- Legend**
- |                             |                          |
|-----------------------------|--------------------------|
| ○ Milepost                  | Stream                   |
| — Alignment Centerline      | — Intermittent           |
| — Access Road Temporary LOD | — Perennial              |
| — Access Road Permanent LOD | — Ephemeral              |
| Permanent Facility          | ▨ Pond                   |
| Limit of Disturbance        | Wetland                  |
| Bore Pit                    | ▨ Palustrine Forested    |
| — Culvert                   | ▨ Palustrine Emergent    |
|                             | ▨ Palustrine Scrub-Shrub |

Note:  
Refer to Table 2 (Streams) and Table 3 (Wetlands) in the Individual Permit Application for information on resource impacts.



**Mountain Valley Pipeline Project**



**Detail Map  
Individual Permit Application**

Figure 4-29  
Wetzel County, West Virginia

November 2022

Data Sources: WV GIS Technical Center Imagery Service 2019  
Note: Map insets are at a scale of 1 inch = 50 feet unless otherwise noted.