



625 Liberty Avenue, Suite 2000 | Pittsburgh, PA 15222
844-MVP-TALK | mail@mountainvalleypipeline.info
www.mountainvalleypipeline.info

August 6, 2019

Ms. Kimberly D. Bose, Secretary
Federal Energy Regulatory Commission
888 First Street NE
Washington, DC 20426


Re: Mountain Valley Pipeline, LLC
Docket No. CP16-10-000
Weekly Status Report No. 90

Dear Ms. Bose:

On October 13, 2017, the Federal Energy Regulatory Commission issued an order granting a Certificate of Public Convenience and Necessity to Mountain Valley Pipeline, LLC ("Mountain Valley") for the Mountain Valley Pipeline Project in the above-identified docket. On October 31, 2017, Mountain Valley submitted its Implementation Plan for the Project. In compliance with Environmental Condition Nos. 8 and 14, Mountain Valley submits its status report for the week ending July 19, 2019.

If you have any questions, please do not hesitate to contact me at (412) 553-5786 or meggerding@equitransmidstream.com. Thank you.

Respectfully submitted,
MOUNTAIN VALLEY PIPELINE, LLC
by and through its operator,
EQM Gathering OPCO, LLC

By: 
Matthew Eggerding
Assistant General Counsel

Attachments

cc: All Parties
Paul Friedman, OEP
Lavinia DiSanto, Cardno, Inc.
Doug Mooneyhan, Cardno, Inc.

FEDERAL AUTHORIZATIONS

Mountain Valley continues discussions with applicable agencies regarding permits.

CONSTRUCTION STATUS

Construction activities and progress are included in Appendix A.

WORK PLANNED FOR NEXT REPORTING PERIOD

Spreads A-F and H continue construction deliverables.

SCHEDULE CHANGES

There are no required schedule changes for waterbody crossings or work in other environmentally sensitive areas.

ENVIRONMENTAL ISSUES

The table in Appendix B summarizes problem area reports (PAR) and noncompliance reports (NCR) issued for the Project during the reporting period, as well as corrective actions taken to resolve each of the issues.

In the event Mountain Valley receives correspondence from other federal, state, or local permitting agencies concerning instances of noncompliance during the reporting period, Mountain Valley will include or reference such correspondence, as well as Mountain Valley's response thereto, in Appendix C.

LANDOWNER RESOLUTIONS

The table in Appendix D includes information regarding landowner concerns and how they were resolved.

VARIANCE CONDITIONS

In the event Mountain Valley is required to provide supplemental documentation as a condition to a variance request granted by the Federal Energy Regulatory Commission, Mountain Valley will include or reference such variances, as well as the required reporting, in Appendix E.

Appendix A Construction Status

Docket No. CP16-10-000
Weekly Report No. 90
Report Period: 07/13/19- 07/19/19

Activity Name	Activity Status	% Complete
---------------	-----------------	------------

Compressor Stations

Bradshaw

Bradshaw Civil - Tree Felling	Completed	100%
Bradshaw Civil - Road Construction	Completed	100%
Bradshaw Civil - Site Construction	Completed	100%
Bradshaw Civil - Post Site Construction/Reclamation	Completed	100%
Bradshaw Mechanical - Office Building Area	Completed	100%
Bradshaw Mechanical - Discharge Filter Area	Completed	100%
Bradshaw Mechanical - Auxiliary Equipment Area	Completed	100%
Bradshaw Mechanical - Blowdown Silencer Area	Completed	100%
Bradshaw Mechanical - Gas Cooler Area	Completed	100%
Bradshaw Mechanical - Compressor Building Area	Completed	100%
Bradshaw Mechanical - Suction Filter Area	Completed	100%
Bradshaw Mechanical - Launcher/Receiver Area	Completed	100%
Bradshaw Mechanical - Produced Fluids Area	In Progress	99.24%
Bradshaw Mechanical - Site Work Area	In Progress	83.92%
Bradshaw Mechanical - Commissioning	Not Started	0%

Harris

Harris Civil - Tree Felling	Completed	100%
Harris Civil - Road Construction	Completed	100%
Harris Civil - Site Construction	Completed	100%
Harris Civil - Post Site Construction/Reclamation	Completed	100%
Harris Mechanical - Office Building Area	Completed	100%
Harris Mechanical - Auxiliary Equipment Area	Completed	100%
Harris Mechanical - Blowdown Silencer Area	Completed	100%
Harris Mechanical - Gas Cooler Area	Completed	100%
Harris Mechanical - Compressor Building Area	Completed	100%
Harris Mechanical - Suction Filter Area	Completed	100%
Harris Mechanical - Launcher/Receiver Area	Completed	100%
Harris Mechanical - Produced Fluids Area	Completed	100%
Harris Mechanical - Site Work Area	Completed	100%
Harris Mechanical - Commissioning	Not Started	0%

Stallworth

Stallworth Civil - Tree Felling	Completed	100%
Stallworth Civil - Road Construction	Completed	100%
Stallworth Civil - Site Construction	Completed	100%
Stallworth Civil - Post Site Construction/Reclamation	Completed	100%
Stallworth Mechanical - Office Building Area	Completed	100%
Stallworth Mechanical - Auxiliary Equipment Area	Completed	100%
Stallworth Mechanical - Blowdown Silencer Area	Completed	100%
Stallworth Mechanical - Gas Cooler Area	Completed	100%
Stallworth Mechanical - Compressor Building Area	Completed	100%
Stallworth Mechanical - Suction Filter Area	Completed	100%
Stallworth Mechanical - Launcher/Receiver Area	Completed	100%
Stallworth Mechanical - Produced Fluids Area	Completed	100%
Stallworth Mechanical - Site Work Area	Completed	100%
Stallworth Mechanical - Commissioning	Not Started	0%

Activity Name	Activity Status	% Complete
---------------	-----------------	------------

Interconnects

Mobley

Mobley Civil - Tree Felling	Completed	100%
Mobley Civil - Road Construction	Completed	100%
Mobley Civil - Site Construction	Completed	100%
Mobley Civil - Post Site Construction/Reclamation	Completed	100%
Mobley Mechanical - GC Building Area	Completed	100%
Mobley Mechanical - CV Building Area	Completed	100%
Mobley Mechanical - Meter Building Area	Completed	100%
Mobley Mechanical - Filter Area	Completed	100%
Mobley Mechanical - Launcher/Receiver Area	Completed	100%
Mobley Mechanical - Site Work Area	Completed	100%
Mobley Mechanical - Commissioning	Not Started	0%

Sherwood

Sherwood Civil - Tree Felling	Not Started	0%
Sherwood Civil - Road Construction	Not Started	0%
Sherwood Civil - Site Construction	Not Started	0%
Sherwood Civil - Post Site Construction/Reclamation	Not Started	0%
Sherwood Mechanical - GC Building Area	Not Started	0%
Sherwood Mechanical - CV Building Area	Not Started	0%
Sherwood Mechanical - Meter Building Area	Not Started	0%
Sherwood Mechanical - Filter Area	Not Started	0%
Sherwood Mechanical - Launcher/Receiver Area	Not Started	0%
Sherwood Mechanical - Site Work Area	Not Started	0%
Sherwood Mechanical - Commissioning	Not Started	0%

WB

WB Civil - Tree Felling	Completed	100%
WB Civil - Road Construction	Completed	100%
WB Civil - Site Construction	Completed	100%
WB Civil - Post Site Construction/Reclamation	Completed	100%
WB Mechanical - GC Building Area	Completed	100%
WB Mechanical - CV Building Area	Completed	100%
WB Mechanical - Meter Building Area	Completed	100%
WB Mechanical - Filter Area	Completed	100%
WB Mechanical - Launcher/Receiver Area	Completed	100%
WB Mechanical - Site Work Area	Completed	100%
WB Mechanical - Commissioning	Not Started	0%

Transco

Transco Civil - Tree Felling	Completed	100%
Transco Civil - Road Construction	Completed	100%
Transco Civil - Site Construction	Completed	100%
Transco Civil - Post Site Construction/Reclamation	Completed	100%
Transco Mechanical - GC Building Area	Completed	100%
Transco Mechanical - CV Building Area	Completed	100%
Transco Mechanical - Meter Building Area	Completed	100%
Transco Mechanical - Filter Area	Completed	100%
Transco Mechanical - Launcher/Receiver Area	Completed	100%
Transco Mechanical - Site Work Area	Completed	100%
Transco Mechanical - Commissioning	Not Started	0%

Appendix A Construction Status

Docket No. CP16-10-000
Weekly Report No. 90
Report Period: 07/13/19- 07/19/19

Activity Name	Activity Status	% Complete
---------------	-----------------	------------

Spreads (Pipeline)

Spread A

Spread A - Tree Felling	Completed	100%
Spread A - Clearing	Completed	100%
Spread A - Prepare right-of-way	Completed	100%
Spread A - Trenching	Completed	100%
Spread A - Stringing	Completed	100%
Spread A - Welding	Completed	100%
Spread A - Coating & Wrapping	Completed	100%
Spread A - Backfilling & Tying-in	In Progress	87.44%
Spread A - Internal Cleaning	Not Started	0%
Spread A - Final Restoration	In Progress	29.26%

Spread B

Spread B - Tree Felling	Completed	100%
Spread B - Clearing	Completed	100%
Spread B - Prepare right-of-way	Completed	100%
Spread B - Trenching	In Progress	93.69%
Spread B - Stringing	Completed	100%
Spread B - Welding	Completed	100%
Spread B - Coating & Wrapping	Completed	100%
Spread B - Backfilling & Tying-in	In Progress	77.46%
Spread B - Internal Cleaning	Not Started	0%
Spread B - Final Restoration	In Progress	25.69%

Spread C

Spread C - Tree Felling	Completed	100%
Spread C - Clearing	Completed	100%
Spread C - Prepare right-of-way	In Progress	99.89%
Spread C - Trenching	In Progress	49.75%
Spread C - Stringing	In Progress	89.07%
Spread C - Welding	In Progress	65.97%
Spread C - Coating & Wrapping	In Progress	58.01%
Spread C - Backfilling & Tying-in	In Progress	46.86%
Spread C - Internal Cleaning	Not Started	0%
Spread C - Final Restoration	In Progress	19.29%

Spread D

Spread D - Tree Felling	Completed	100%
Spread D - Clearing	Completed	100%
Spread D - Prepare right-of-way	Completed	100%
Spread D - Trenching	Completed	100%
Spread D - Stringing	Completed	100%
Spread D - Welding	Completed	100%
Spread D - Coating & Wrapping	In Progress	95.27%
Spread D - Backfilling & Tying-in	In Progress	70.79%
Spread D - Internal Cleaning	Not Started	0%
Spread D - Final Restoration	In Progress	14.28%

Spread E

Spread E - Tree Felling	Completed	100%
Spread E - Clearing	Completed	100%
Spread E - Prepare right-of-way	Completed	100%
Spread E - Trenching	In Progress	93.55%

Appendix A Construction Status

Docket No. CP16-10-000
Weekly Report No. 90
Report Period: 07/13/19- 07/19/19

Activity Name	Activity Status	% Complete
Spread E - Stringing	In Progress	99.02%
Spread E - Welding	In Progress	97.68%
Spread E - Coating & Wrapping	In Progress	88.25%
Spread E - Backfilling & Tying-in	In Progress	69.05%
Spread E - Internal Cleaning	Not Started	0%
Spread E - Final Restoration	In Progress	29.27%
Spread F		
Spread F - Tree Felling	Completed	100%
Spread F - Clearing	In Progress	97.03%
Spread F - Prepare right-of-way	In Progress	92.9%
Spread F - Trenching	In Progress	84.2%
Spread F - Stringing	In Progress	84.2%
Spread F - Welding	In Progress	84.2%
Spread F - Coating & Wrapping	In Progress	83.76%
Spread F - Backfilling & Tying-in	In Progress	80.84%
Spread F - Internal Cleaning	Not Started	0%
Spread F - Final Restoration	In Progress	32.7%
Spread G		
Spread G - Tree Felling	Completed	100%
Spread G - Clearing	In Progress	64.08%
Spread G - Prepare right-of-way	In Progress	43.82%
Spread G - Trenching	In Progress	19.48%
Spread G - Stringing	In Progress	33.86%
Spread G - Welding	In Progress	21.67%
Spread G - Coating & Wrapping	In Progress	20.03%
Spread G - Backfilling & Tying-in	In Progress	19.48%
Spread G - Internal Cleaning	Not Started	0%
Spread G - Final Restoration	In Progress	5.89%
Spread H		
Spread H - Tree Felling	In Progress	99.7%
Spread H - Clearing	In Progress	66.91%
Spread H - Prepare right-of-way	In Progress	62.17%
Spread H - Trenching	In Progress	52.6%
Spread H - Stringing	In Progress	54.75%
Spread H - Welding	In Progress	46.79%
Spread H - Coating & Wrapping	In Progress	44.94%
Spread H - Backfilling & Tying-in	In Progress	38.92%
Spread H - Internal Cleaning	Not Started	0%
Spread H - Final Restoration	In Progress	10.81%
Spread I		
Spread I - Tree Felling	Completed	100%
Spread I - Clearing	Completed	100%
Spread I - Prepare right-of-way	Completed	100%
Spread I - Trenching	Completed	100%
Spread I - Stringing	Completed	100%
Spread I - Welding	Completed	100%
Spread I - Coating & Wrapping	Completed	100%
Spread I - Backfilling & Tying-in	In Progress	82.29%
Spread I - Internal Cleaning	Not Started	0%
Spread I - Final Restoration	In Progress	5.03%



Appendix A Construction Status

Docket No. CP16-10-000
Weekly Report No. 90
Report Period: 07/13/19- 07/19/19

Activity Name	Activity Status	% Complete
---------------	-----------------	------------

Contractor Yards

West Virginia Locations

MVP-LY-013	Completed	100%
MVP-LY-003	Completed	100%
MVP-LY-031	Completed	100%
MVP-LY-057	Completed	100%
MVP-LY-068	Completed	100%
MVP-LY-059	Completed	100%
MVP-LY-038	Completed	100%
MVP-LY-069	Completed	100%
MVP-LY-027	Completed	100%
MVP-CY-002A	Completed	100%
MVP-CY-002	Completed	100%
MVP-LY-030	Completed	100%
MVP-LY-025	Completed	100%
MVP-LY-022	Completed	100%
MVP-LY-005	Completed	100%
MVP-LY-004	Completed	100%
MVP-LY-021	Completed	100%
MVP-LY-001A	Completed	100%
MVP-LY-017	Completed	100%
MVP-LY-001	Completed	100%
MVP-RD-001B	Completed	100%
MVP-LY-051	In Progress	95%
MVP-LY-050	In Progress	55%
MVP-LY-070	In Progress	50%
MVP-LY-058	In Progress	10%
MVP-LY-052	Not Started	0%
MVP-LY-065	Not Started	0%
MVP-LY-037	Not Started	0%
MVP-LY-016	Not Started	0%
MVP-AP-002	Not Started	0%
MVP-SA-001	Not Started	0%
MVP-LOG-001	Not Started	0%
MVP-AP-001	Not Started	0%
MVP-RD-001A	Not Started	0%
MVP-LY-024	Not Started	0%
MVP-LY-002	Not Started	0%

Virginia Locations

MVP-LY-046	Completed	100%
MVP-LY-048	Completed	100%
MVP-LY-1019	Completed	100%
MVP-LY-028	Completed	100%
MVP-LY-026	Completed	100%
MVP-LY-034	Completed	100%
MVP-LY-033	Completed	100%
MVP-LY-032	Completed	100%
MVP-PY-006	In Progress	99%
MVP-LY-029	Not Started	0%
MVP-LY-035	Not Started	0%

APPENDIX B**ENVIRONMENTAL COMPLIANCE**

The following table summarizes problem area reports (PAR) and noncompliance reports (NCR) issued for the Project during the reporting period, as well as corrective actions taken to resolve the issue (including the cost and effectiveness of the corrective actions).

Compliance	Spread	Location	Description and Date	Correction and Date
PAR	A	201+00	6/22/2018 - Slip began on ROW and overwhelmed and removed diversion berm. Material left the LOD.	Pending – Variance A-32 was approved on 3/29/2019. Trees are felled and stabilization efforts continue.
PAR	A	117+00	9/26/2018 - Return sediment from slipped area.	Pending approval of a variance request (A-31).
NCR	A	Olive Branch Baptist Church	12/6/2018 - Construction activities outside of LOD. Stone was being placed at Olive Branch Baptist Church parking lot with a skid steer.	6/14/2019 – After the fact variance approved.
PAR	A	AR 13	2/13/2019 - Slip from ROW impacted stream S-A117.	Pending - The work is being monitored daily to avoid impacts to resources and a vac truck is being used to remove materials from the ECD's. Pending variance request approval (A-57).

Compliance	Spread	Location	Description and Date	Correction and Date
PAR	A	475+00	4/15/2019 – Slip went off LOD at 475+00.	Pending – ECD's have been installed to prevent impacts to resources. Pending variance request (A-57).
NCR	D	Access Road AR158	3/11/2019 – Survey crew did not properly stake the LOD. LOD stakes approximately 20 feet offset from actual LOD causing crews to install ECDs (ground disturbance) off LOD.	Pending – Environmental crew moved silt fencing to LOD stakes on 3/11/2019. Temporarily mulched the area disturbed off LOD. Once equipment is in that area, the bridge will be adjusted by 4 feet.
PAR	D	5476+00	5/9/19 – Crew damaged standing timber along the LOD	5/9/19 – Crews were informed not to damage standing timber.
NCR	E	7463+00	5/6/2019 – Stream S-127 was impacted with sediment laden water and mud due to lack of maintenance on the bridge throughout the day.	5/6/2019 – Enviro crew replaced the bridge runners, caps, geotextile, and fixed the sideboards the same day.
PAR	E	7235+60	10/3/2018 - A large culvert needs to be installed in W-M23 and matted over. ST 7223+50 holding water, water bar needs to be moved to allow this water to drain into the existing sump.	Pending NWP permits.

Compliance	Spread	Location	Description and Date	Correction and Date
PAR	E	6789+40	10/3/2018 - Stream/wetland sinking over where pipe was installed.	Pending NWP permits.
PAR	E	6812+98	10/10/2018 - Seeded 4 weeks ago and seed never took. Area in wetland is subsiding.	Pending NWP permits.
PAR	E	7731+75	7/10/2019 – Due to lack of ECDs, sediment laden water left the ROW and travelled down Bellburn Road.	7/10/2019 – Enviro crew installed the required ECDs the same day.
NCR	F	MVP-LY-31	7/17/2018 - Pavement was added but was not mentioned in the variance. Need to write an after the fact variance for the pavement.	Pending approval of a variance request.
PAR	F	8634+00	7/6/2019 – ECDs failed after a 2.1-inch rain event.	7/8/2019 – Crews removed sediment from the stream and added more water bars and enhanced BMPs.
NCR	F	9840+00	2/19/2019 - Off ROW disturbance while pulling back slip material.	Pending – Issue an after the fact variance.
NCR	F	MVP-MO-213	4/1/2019 - Contractor has placed ECD's and rock off LOD of the access road.	Pending – Land agent spoke with L/O and received permission to leave the rock. A variance will be submitted.

Compliance	Spread	Location	Description and Date	Correction and Date
PAR	F	9470+00, 9460+40, 9440+13	6/20/2019 - ECDs failed after 0.85" rainfall within 45 minutes resulting in sediment off ROW.	6/22/2019 - Crews retrieved sediment off LOD and repaired ECDs.
PAR	G	10895- 10896+00	7/8/2019 - A full sump and undercut end treatment resulted in sediment off ROW.	7/9/2019 – Sump cleaned out and undercut end treatment repaired. Off ROW sediment retrieved and area stabilized.
PAR	G	Access Road 266	7/8/2019 – End treatment bypassed during storm event resulting in sediment off ROW.	7/9/2019 – Additional controls added to the end treatment to prevent bypassing. Off ROW sediment retrieved and area stabilized.
PAR	G	11679+50	7/10/2019 – Triple stack CFS end treatment undermined during storm event resulting in sediment off ROW.	7/11/2019 – Undercut end treatment repaired. Off ROW sediment retrieved and area stabilized.
PAR	G	11797+00	7/10/2019 – Silt fence perimeter undercut resulting in sediment off ROW.	Pending – Perimeter silt fence repaired 7/10/2019. Pending landowner permission to retrieve off ROW sediment and stabilize area.
NCR	G	11407+61 to 11409+00	6/21/2018 - Livestock fence installed off ROW.	Pending – Fence will be moved to LOD following approval of variance request G-11. Landowner approval pending.

Compliance	Spread	Location	Description and Date	Correction and Date
PAR	G	10955+74	8/9/2018 - No RCE in place at road crossing.	Pending – Will be installed once stop work order is lifted and work in this area resumes.
PAR	G	VA-MO-5526	6/3/2019 - Isolated thunderstorms hit ROW which overwhelmed perimeter controls resulting in sediment off ROW.	Pending – Temporary water bars and end treatments were installed upslope and maintenance was performed on ECD's on 6/4/19. Pending landowner approval to recover off ROW sediment.
PAR	G	VA-MO-3370	6/6/2019 - End treatment undercut resulting in sediment off ROW.	Pending – End treatment repaired on 6/7/19. Landowner approval pending to recover off ROW sediment.
PAR	G	11827+00	7/15/2019 – End treatment undercut/overtopped resulting in sediment off ROW.	7/16/19 – Waterbar end treatment repaired 7/15/19 and off ROW sediment recovered and area stabilized 7/16/19.
PAR	G	11829+75	7/15/2019 – Triple stack CFS perimeter undercut resulting in sediment off ROW.	7/16/2019 - Triple stack perimeter control repaired and cleaned out 7/15/19 and off ROW sediment recovered and area stabilized 7/16/19.

Compliance	Spread	Location	Description and Date	Correction and Date
PAR	G	11363+00	7/15/2019 – CFS perimeter control damaged by landowner accessing the ROW and overtopped resulting in sediment off ROW.	7/17/2019 – CFS replaced on 7/16/19 and off ROW sediment recovered and area stabilized 7/17/19.
PAR	H	12002+00	7/16/2019 – Sump overwhelmed by floodwater from stream S-G36 and washed large amounts of straw mulch outside of the ROW.	7/17/2019 – With landowner permission, enviro crew retrieved the straw mulch by foot and returned it to ROW.
PAR	H	12007+00 to 12013+97	7/16/2019 – Flash flood waters displaced timber mats in the travel lane adjacent to stream S-G36, washing gravel off of access road into a hayfield, displaced ECDs at bridge crossing, and shifted timber mats on the bridge over AR 268.01.	Pending – Pending landowner permission, timber mat bridge will be reset, mats outside of LOD will be retrieved, gravel will be removed from hayfield, and priority 1 silt fencing and CFS will be reinstalled.

Compliance	Spread	Location	Description and Date	Correction and Date
PAR	H	12076+50	7/17/2019 – Flash flood waters overwhelmed ECDs at stream bridge S-MM15 damaging CFS, bridge side rails, and depositing sediment in stream channel 75’ off ROW.	Pending – With landowner permission, sediment will be retrieved from stream, side rails will be reinstalled on bridge, and ECDs will be reinstalled.
PAR	H	12078+00	7/17/2019 Flash floodwaters overwhelmed CFS end treatment on a slope breaker during a 3.4” flood event. Sediment was deposited approximately 380’ off ROW.	Pending – CFS outlet repaired, sump cleaned out and armored with stone, and a fill slope drain pipe has been installed to reduce stormwater contact with loose soils. Landowner permission to retrieve sediment off ROW pending.
PAR	H	12086+56	7/17/2019 – Stormwater overtopped SSF in the corner of the ROW boundary at stream S-MM14 during a 3.4” flash flood event. Sediment deposited 50’ off ROW in stream channel.	Pending – With landowner permission, sediment will be retrieved from stream. SSF has been maintained.

Compliance	Spread	Location	Description and Date	Correction and Date
PAR	H	12071+80	7/17/2019 – Stormwater overtopped CFS turn-out and deposited gravel 100' off ROW via a drainage feature that parallels the AR during a 3.4" flash flood event.	Pending – With landowner permission, gravel will be removed from the drainage feature and replaced on AR, CFS turn-out was cleaned and repaired.
PAR	H	12331+00	7/17/2019 – During a 0.75" storm event, stormwater overtopped a CFS water bar end treatment and SSF and deposited sediment 380' off ROW.	Pending – A slope pipe was installed across the fill slope and the plunge pool end treatment was cleaned out on 7/18/19. Landowner permission to retrieve sediment off ROW pending.
PAR	H	12958+00	10/14/2018 - Excessive flood waters from Hurricane Michael washed road base material and gravel out into ag field and stream S-Z17 on access road (MVP-RO-287). Some gravel existed in this area before the installation of the air bridge.	Pending – Landowner permission pending for gravel retrieval. ECD's were repaired and air bridge rock approaches were re-established on 10/14/18. Perimeter control was upgraded to SSF. Pending authorization for off ROW repairs.

Compliance	Spread	Location	Description and Date	Correction and Date
PAR	H	12958+00	06/10/2019 - Flood waters washed road base material and gravel out into stream (S-Z17) and wetland (W-IJ62) located along access road MVP-RO-287. Some gravel existed in this area before the installation of the air bridge.	Pending – Landowner permission pending to retrieve gravel outside of the LOD. ECDs were repaired and air bridge rock approaches were re-established on 06/11/19.
PAR	H	12974+29	06/10/2019 - Flood waters washed road base material and gravel out into stream (S-Q20) and wetland (W-Q11) located along access road MVP-RO-288. Some gravel existed in this area before the installation of the air bridge.	Pending - Landowner permission pending to retrieve gravel outside of the LOD. ECDs were repaired and air bridge rock approaches were re-established on 06/11/19.
PAR	JNF	11584+02	6/25/2018 - Runoff undermined silt fence along the LOD and allowed sediment to migrate off ROW at 11584+02.	Pending – The silt fence was backfilled, but sediment cannot be retrieved until variance request from the USFS is received.
PAR	JNF	11620+62	9/18/2018 - End treatment failed allowing small amount of sediment to migrate beyond LOD.	Pending – ECD's were repaired on 9/18/2018. Pending variance approval to retrieve sediment off LOD.
PAR	JNF	11649+00	09/24/2018 - End treatment failed allowing sediment to migrate beyond approved LOD.	Pending – ECD's were repaired on 9/26/18. Variance from USFS to retrieve sediment requested.

Compliance	Spread	Location	Description and Date	Correction and Date
PAR	JNF	MVP-GI-232 142+96 and 143+30	4/17/2019 - Sediment migrated beyond the LOD of Pocahontas Road (MVP-GI-232).	Pending – CFS was installed along the edge of Pocahontas Road to filter runoff and contain sediment to area within the LOD. Work was completed on 4/18/2019. Sediment beyond LOD (less than 5 gallons) was not retrieved. Pending approval from USFS to retrieve.
PAR	JNF	10412+25 and 10442+00	4/29/2019 - End treatments for water bars at two locations along access road MVP-GI-231 failed. A small amount of sediment migrated beyond LOD at both locations.	Pending – ECD's were repaired on 4/29/19. Sediment to be raked into surface, seeded and mulched. Waiting for USFS approval to complete.
Note: PAR – Problem Area Report; NCR – Noncompliance Report.				

APPENDIX C**AGENCY CORRESPONDENCE AND RESPONSES****Spread D**

MVP received an NOV from the WVDEP for Spread D. NOV No. W19-34-014-JTL is associated with the partial inspection of the right-of-way completed on May 30, 2019 in Nicholas County, West Virginia. MVP provided a response to the WVDEP on July 16, 2019. A copy of Nov. No W19-34-014-JTL was included in Weekly Report No. 87 and a copy of the response letter is included in Appendix C.

Spread E

MVP received an NOV from the WVDEP for Spread E. NOV No. W19-13-016-JTL is associated with the partial inspection of the right-of-way completed on June 11, 2019 in Greenbrier County, West Virginia. MVP provided a response to the WVDEP on July 17, 2019. A copy of Nov. No W19-13-016-JTL and a copy of the response letter is included in Appendix C.

Spread F

MVP received an NOV from the WVDEP for Spread F. NOV No. W19-32-17-JTL is associated with the partial inspection of the right-of-way completed on June 12, 2019 in Monroe County, West Virginia. MVP provided a response to the WVDEP on July 17, 2019. A copy of Nov. No W19-32-17-JTL and a copy of the response letter is included in Appendix C.



July 15, 2019

Mr. Jason Liddle
West Virginia DEP - Environmental Enforcement/WW
131 Peninsula St
Wheeling, WV 25304

**Re: Mountain Valley Pipeline Project (Permit No. WVR310667)
Response to Notice of Violation No. W19-34-014-JTL**

Dear Mr. Liddle:

This letter is in response to Notice of Violation (NOV) No. W19-34-014-JTL issued to Mountain Valley Pipeline, LLC (Mountain Valley) by the West Virginia Department of Environmental Protection (WVDEP). The inspection was completed on May 30, 2019 along portions of Spread D in Nicholas County.

Mountain Valley investigated accordingly and completed the following corrective actions to address and abate any alleged issues within NOV No. W19-34-014-JTL:

Corrective Actions

- Temporary stabilization/mulching has been added to stabilize soils;
- Upgraded end treatments and rock stabilization has been included along several fill slopes;
- Additional rows of Priority 1 (P1) silt fence has been installed behind log piles and where necessary along the project area;
- P1 fencing has been installed between the stockpile and project area near Station 6508; and
- Regrading the LOD to remove rill erosion and increase stabilization.

The attached photographs illustrate the actions that have been incorporated into the project area.

Mountain Valley believes the issues listed in the NOV have been fully addressed and resolved. If you have questions or need additional information, please do not hesitate to contact me at (724) 873-3009 or via email at mhooover@equitransmidstream.com.

Sincerely,

A handwritten signature in blue ink, appearing to read "M. Hoover", is written over a horizontal line.

Matthew S. Hoover
Equitrans Midstream - Sr. Environmental Coordinator

CC: Project File

Attachment A
Corrective Action Photos



Photo 1: Photo illustrates the temporary stabilization and CFS that has been installed near Station 6474+16.



Photo 2: Photo illustrates the additional temporary stabilization that has been applied near Station 6474+16





Photo 5: Photo illustrates the additional row of P1 silt fence that has been installed near Station 6497+50.



Photo 6: Photo illustrates the temporary stabilization and additional ECDs that have been installed near Station 6508+30



Photo 7: Photo illustrates the additional water bar that was installed near Station 6504+20 and the regraded LOD.



Photo 8: Photo shows the row of P1 fencing that has been installed to separate the stockpile from the waterbar near Station 6508.



Photo 9: Photo shows stabilization near Station 6508+30 .



Photo 10: Photo shows the additional P1 silt fence and temporary stabilization that has been installed near Station 6510+40.



Photo 11: Photo illustrates the drainage channel installed near Station 6510+40.



Photo 12: Photo shows the additional rock that has been added for stabilization near Station 6510+40.



Photo 13: Photo illustrates the drainage channel installed near Station 6510+40.



Photo 14: Photo shows the additional rock and CFS that have been installed near Station 6510+40.



Photo 15: Photo illustrates the additional ECDs that have been installed along ATWS-22-7A., near Station 6514+60.

**WEST VIRGINIA DEPARTMENT OF ENVIRONMENTAL PROTECTION
WV OIL AND GAS CONSTRUCTION STORMWATER PERMIT**

FACILITY NAME:	Mountain Valley Pipeline Project			REG. #	EXPIRE DATE:
PERMITTEE	MOUNTAIN VALLEY PIPELINE, LLC			WVR310667	5/13/2018 Extended: 06/31/2019
ADDRESS/PHONE:	Attn: MATTHEW HOOVER 625 LIBERTY AVE, ST 1700 PITTSBURG, PA 15222 7248733645				
LOCATION:	Spread E			Entry Date/Time:	06/11/19 8:30am
COUNTY:	Greenbrier			Exit Date/Time:	06/11/19 3:00pm
Site Representative /Phone	John H.			PHOTOS <input checked="" type="checkbox"/>	
CO-PERMITTEE:					
SITE OPERATOR:					
PERMITTED ACREAGE	4311	WEATHER:	Sunny	LAST INSPECTION:	4/30/19
RECEIVING STREAM(S)	Meadow River				NOV: 1
Regular Mail <input type="checkbox"/> Certified Mail <input checked="" type="checkbox"/>	Tracking #				
OVERALL FACILITY RATING:	Unsatisfactory		COMPLIANCE OUTCOME	Not Immediately Corrected	

PERMIT / SITE EVALUATION

S-Satisfactory	U-Unsatisfactory	N/A-Not Applicable	N/O-Not Observed	N/D Not Determined	M-Marginal	Y-Yes	N-No
1. PERIMETER CONTROLS	U	9. HOUSEKEEPING/SOLID WASTE	S	17. CONCRETE WASHOUT	N/A		
2. DIVERSIONS/DITCH CHECKS	S	10. RECORDS, REPORTS & PLANS ON SITE	N/D	18. PUBLIC NOTICE SIGN	N/D		
3. SEDIMENT TRAPS/BASINS	N/A	11. STABLE CONSTRUCTION ENTRANCE	S	19. SEDIMENT LADEN WATER LEAVING SITE	U		
4. OUTLET MARKERS	N/A	12. MUD ON ROADWAY/DUST	S	20. CONDITIONS NOT ALLOWABLE	No		
5. WASTE/BORROW SITES	N/A	13. APPROPRIATE BMP'S IMPLEMENTED	U	21. SWPPP/ GPP/PERMIT COMPLIANCE	S		
6. OPERATIONS & MAINTENANCE	U	14. FILL SLOPE PROTECTION	S	22. ORDER COMPLIANCE	N/A		
7. WATER BARS	S	15. DEVICES INSTALLED IN TIMELY MANNER	S	23. OTHER:			
8. STABILIZATION PRACTICES	S	16 DROP INLET PROTECTION	N/A	24. OTHER:			

COMMENTS DEFICIENCIES AND RECOMMENDATIONS

Comments:

A partial inspection of MVP Right of Way (ROW) was conducted for Spread E on 06/11/19 in Greenbrier county, WV. Route 60 crossing and the Meadow River crossing were in the areas inspected. It was observed on the day of inspection that the large slope above the Meadow River crossing North of Route 60, between station No.'s 7590+00 through 7609+50, had multiple Waterbar outlets with sediment deposits and sediment laden water past the perimeter controls and LOD. At station No. 7590 a Waterbar outlet was overwhelmed with sediment and deposits were present past the LOD. Approximately 200 feet above Upper Crosier Road a Waterbar outlet needed maintained due to sediment overwhelming the controls and deposits being present past the LOD. Below the Upper Krosier road crossing a slope drain and outlet controls were not being maintained and deposits were present past controls and LOD. At station No. 7576+01 erosion was present downslope of Waterbar outlet controls leading to sediment

overwhelming perimeter controls and sediment to be deposited past the LOD. At station No. 7609+50 Waterbar outlet controls were overwhelmed with sediment leading to perimeter controls being overwhelmed and sediment being deposited past LOD. It could not be determined if Wetland W-QR2 had been impacted by the control's failures observed. This is an area of concern due to the proximity to the Meadow River. On the South side of Route 60 station No's 7675+00 through 7630+00 were inspected. At station No. 7636+00 a slope drain had been installed in the sump. The slope drain had not been installed correctly and was not functioning. Run-off was flowing over the sump lip and causing erosion around the drain overwhelming downslope controls with sediment. Sediment deposits were observed approximately 20-foot past the LOD. Access roads AR 182.5 and AR 184 were inspected. Access Road 182.5, approximately 500 feet before intersecting MVP ROW has a steep grade intersects Wetland W-V6. Previous inspections documented erosion in the ditch line that flows downslope towards an old logging road. And several culvert inlets above W-V6. A bridge was installed to cross W-V6. Above the bridge a temporary Waterbar was installed per SWPPP, however it had been worn down and was barely distinguishable. This Waterbar needs maintained. It was recommended that the Waterbar not terminate on the shoulder of the Access road above the bridge crossing without going through controls, instead redirected back into the armored ditch line that terminates into enhanced controls downslope of the bridge crossing. The bridge crossings controls needed maintenance. SLW and deposits were observed downslope of Wetland W-V6 past the culverts and perimeter outlet controls and LOD.


Areas inspected included:

- From Station No. 7570+00 to No. 7609+50 (Meadow River Crossing)
- Wetland Q-R2 and W-V6
- Upper and Lower Krosier Road Crossings
- Access Roads AR 182.5 and AR 184
- From Station No. 7675+00 to Station No. 7630+00 above Route 60 crossing.

Deficiencies:

1. **(1, 6, 13, 19)** Between station No.'s 7590+00 through 7609+50, had multiple Waterbar outlets with sediment deposits and sediment laden water past the perimeter controls and LOD.
2. **(1, 6, 13, 19)** At station No. 7636+00 a slope drain had not been installed correctly and was not functioning. Run-off was flowing over the sump lip and causing erosion around the drain overwhelming downslope controls with sediment. Sediment deposits were observed approximately 20-foot past the LOD.

3. **(6).** Above the bridge along AR-182.5 a temporary Waterbar was installed but had been worn down and was barely distinguishable. This Waterbar needs maintained.
4. **(1, 6, 13, 19)** Bridge crossing at Wetland W-V6 on AR-182.5. Erosion present in the ditch upslope of this crossing; sediment deposits and SLW was observed past controls and LOD below wetland W-V6.

INSPECTOR:  Jason Liddle Telephone: 304-859-4399
Modified: 10-15-2017 JHH

STATE OF WEST VIRGINIA
Department of Environmental Protection
Environmental Enforcement
NOTICE OF VIOLATION

Violation No W19-13-016-JTL

To the Operator or Agent of:

Facility Name: Mountain Valley Pipeline Project Permit No. WVR310667

Permittee or Individual: MOUNTAIN VALLEY PIPELINE, LLC

Located at or near: Station No.'s 7590+00-7613 and 7636+00 MVP ROW in Greenbrier County

Representative: MATTHEW HOOVER Date: 6/11/19 Time: 12:00pm

Address / phone number: 625 LIBERTY AVE, ST 1700, PITTSBURG, PA 15222 / 7248733645

Whereas, an inspection of the above-named operation by the undersigned, duly authorized agent of the Secretary, at which the following described condition or practice exists, in violation of Chapter 22, Article 11, Section(s) 1 et. Seq. of the Code of West Virginia and/or Section(s) CSR47-2-3 of the Rules and Regulations and/or Section(s) D, G of the Permit referenced above promulgated thereunder in that you: Have violated the following terms and conditions of WV/NPDES General Water Pollution Control Permit No. WV0116815, Registration No. WVR310667:

Section D.1-Permitte has failed to properly operate and maintain all facilities and systems: Evidence was observed at station No.'s 7590+00 through 7613+00 and at station No. 7636+00 that controls were not being maintained causing Sediment to be transported past the LOD. SLW and deposits past LOD at Wetland W-V6 crossing with AR-182.5.

Section G.4.e.2.A.ii.j.-Permittee has failed to prevent sediment laden water from leaving the site without going through an appropriate device: Sediment deposits from SLW leaving the site was observed at station No.'s 7590+00 through 7613+00 and at station No. 7636+00. SLW and deposits past LOD at Wetland W-V6 crossing on AR-182.5.

The following corrective measures were discussed with you at the time of this inspection:

Take measures to correct the aforementioned violations.


Within 20 days provide a written response to the inspector named below, at the address indicated, detailing the actions taken to abate this violation.

Received by:

Sent Certified Mail--70171450000167818736

Signature

Title



Duly Authorized Agent /
Inspector

304-859-4399
Telephone

Jason.T.Liddle@wv.gov
E-mail

Send Response to the Inspector at the address indicated below:

WV Department of Environmental Protection
Environmental Enforcement / WW
1159 Rahall Greenway, Fayetteville, WV 25840



Facing towards Access Road 182.5 at station No. 7570+00. Perimeter controls enhanced since last inspection.



Station No. 7590. Waterbar outlet was overwhelmed with sediment and deposits were present past the LOD.



At station No. 7590 downslope of Waterbar outlet sediment deposits were present past the LOD.



200-foot upslope of Krosier road crossing Waterbar outlet in need of maintenance. Controls overwhelmed with sediment. Deposits present past LOD.



200-foot upslope of Krosier road crossing Deposits present past LOD downslope of Waterbar outlet.



Upper Krosier Road Crossing facing East.



Upper Krosier Road Crossing facing West. Arrow depicts culvert outlets that flows downslope.



Culvert outlet with sediment deposits in ditch line. Erosion present on slope above outlet. Arrow depicts deposits present in ditch.



Standing on Krosier road facing east at additional workspace and ROW crossing. Mud and sediment present on road. Run-off flowing towards culvert inlet along Krosier road. Arrow depicts culvert inlet location.



Culvert inlet with sediment present around the inlet at Krosier road ROW crossing. Downslope of Additional workspace and upslope of construction entrance and crossing.



Downslope of Krosier Road Crossing near station No. 7576+01. Waterbar outlet perimeter controls in need of maintenance. Sediment laden water (SLW) and deposits were present past controls and LOD. Arrow depicts sediment backed up behind controls causing SLW to overtop the control.



Perimeter control being overtopped with SLW and sediment backed up behind control.



Downslope of Krosier Road Crossing near station No. 7576+01. Sediment laden water (SLW) and deposits were present past controls and LOD.



Below upper Krosier Road crossing near station no. 7576+01 facing North. Erosion present on slope due to seep running onto ROW.



Below upper Krosier Road crossing near station no. 7576+01 facing South at Waterbar. Erosion present on slope due to seep running onto ROW. Sediment deposited in Waterbar.



Below upper Krosier Road crossing near station no. 7576+01 facing towards Waterbar outlet. Erosion present on slope due to seep running onto ROW causing sediment to be deposited in Waterbar.



Below upper Krosier Road crossing near station no. 7576+01 facing downslope below Waterbar outlet. Arrow depicts evidence of Run-off flowing around controls and causing erosion downslope of controls was observed.



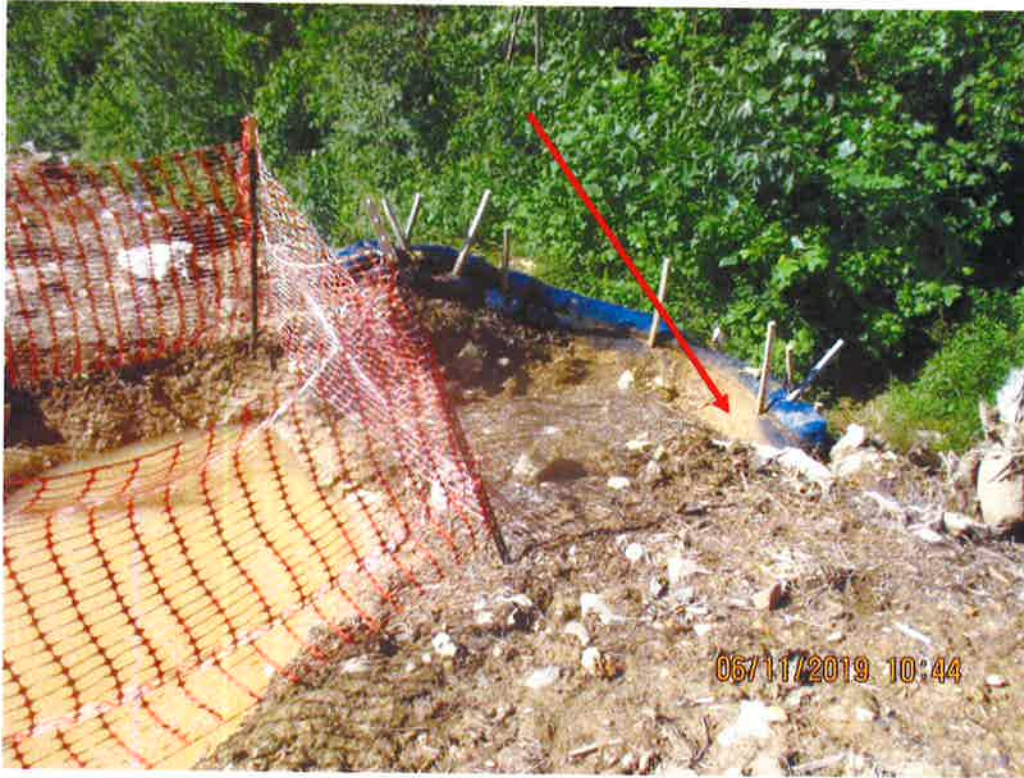
Standing at station No. 7576+01 downslope of Waterbar that had sediment being deposited in it due to run on from seep. Controls overwhelmed with sediment. Erosion on slope, SLW and deposits observed past LOD and controls.



Standing at station No. 7576+01 downslope of Waterbar that had sediment being deposited in it due to run on from seep. SLW and deposits observed past LOD and controls.



Facing South towards Route 60 and meadow River ROW crossing near station No. 7604+41.



Waterbar outlet near No. 7604+41. Sump and perimeter controls in need of maintenance. Sediment deposited behind perimeter controls.



Downslope of Waterbar outlet near No. 7604+41. Perimeter controls in need of maintenance. Sediment deposited behind perimeter controls. Sediment deposits observed past controls and LOD.



Downslope of Waterbar outlet near No. 7604+41. Sediment deposits observed past controls and LOD.



Standing above Station No. 7604+41. Waterbar had sediment being deposited in it from erosion upslope. Sump was full of sediment and needed maintained. Arrow depicts sediment in Waterbar and sump.



Standing above Station No. 7604+41. Waterbar had sediment being deposited in it from erosion causing sump to be full of sediment.



Standing above Station No. 7604+41. Controls below Waterbar and sump that had sediment present due to erosion. Perimeter controls being overwhelmed with sediment.



Standing above Station No. 7604+41. Perimeter controls overwhelmed with sediment.



Standing above Station No. 7604+41. Perimeter controls overwhelmed with sediment. Sediment deposits observed past controls and LOD.



Above Lower Krosier Road crossing. Erosion present on ROW above Waterbar. Facing upslope near station no. 7604+41.



Above Lower Krosier Road crossing. Erosion present on ROW above Waterbar. Sediment being deposited in Waterbar and sump, overwhelming sump and perimeter controls near station no. 7604+41.



Above Lower Krosier Road crossing. Erosion present on ROW above Waterbar. Sediment being deposited in Waterbar and sump, overwhelming sump and perimeter controls near station no. 7604+41.



Above Lower Krosier Road crossing. Erosion present in Waterbar near station no. 7604+41.



Above Lower Krosier Road crossing. Erosion present in Waterbar causing Sediment to be deposited in sump. Sump needed maintained.



Above Lower Krosier Road crossing. Sediment and SLW overwhelming sump and perimeter controls near station no. 7604+41. Sediment deposits and SLW past controls and LOD.



Facing South (Downslope) at station No. 7609+50. Waterbar receiving sediment due to erosion on slope.



Facing South (Downslope) at station No. 7609+50. Waterbar receiving sediment due to erosion on slope. Controls overwhelmed with SLW and sediment.



Facing South (Downslope) at station No. 7609+50. Waterbar outlet controls overwhelmed with SLW and deposits.



Facing South (Downslope) at station No. 7609+50. Waterbar outlet controls overwhelmed with SLW and deposits. Deposits observed past controls and LOD above wetland W-QR2. This is an area of concern due to the deposits potentially being transported into a stream that wasn't delineated and parallels the LOD and terminates back onto the ROW above the Meadow River.



Standing at station No. 7636+00 at Waterbar outlet and slope drain. Slope drain was being undercut. Sediment was overwhelming perimeter control. Sediment deposits observed past controls and LOD.



Standing at station No. 7636+00 at Waterbar outlet and slope drain. Slope drain was being undercut. Sediment was overwhelming perimeter control. Control in need of maintenance.



Spoil pile near station No. 7636+00. No perimeter controls at the base of pile. This is an area of concern due to the potential for sediment to be deposited past the LOD.



Facing up grade on Access Road 192.5 at wetland crossing W-V6. SWPPP detailed Waterbar above this crossing. Waterbar had been eroded and was barely distinguishable. Arrow depicts where Waterbar was installed and terminating on road bank (slope).



Wetland W-V2 crossing with AR-182.5. Sediment tracked onto bridge and has migrated past controls and into wetland. Arrow depicts deposits.



Wetland Crossing W-V6. Controls on bridge in need of maintenance. Impacts due to sediment migrating off bridge is an area of concern.



Controls below culvert outlet and bridge crossing with AR-182.5. Sediment deposits and SLW observed past these controls and LOD. Arrow depicts deposits.



Further downslope of culvert outlet and standing below another culvert outlet where P1 silt fence was installed. Sediment deposits and SLW present. Arrows depict outlet controls and where SLW and deposits were observed.



July 17, 2019

Mr. Jason Liddle
West Virginia DEP - Environmental Enforcement/WW
131 Peninsula St
Wheeling, WV 25304

**Re: Mountain Valley Pipeline Project (Permit No. WVR310667)
Response to Notice of Violation No. W19-13-016-JTL**

Dear Mr. Liddle:

This letter is in response to Notice of Violation (NOV) No. W19-13-016-JTL issued to Mountain Valley Pipeline, LLC (Mountain Valley) by the West Virginia Department of Environmental Protection (WVDEP). The inspection was completed on June 11, 2019 along portions of Spread E in Greenbrier County.

Mountain Valley investigated accordingly and completed the following corrective actions to address and abate any alleged issues within NOV No. W19-13-016-JTL:

Corrective Actions

- Additional Priority 1 (P1) fencing has been installed;
- Filtration media/mulch has been added to compost filter sock (CFS);
- Sumps have been pumped out;
- Additional gravel has been added along Crosier Road; and
- The right-of-way (ROW) has been regraded where necessary.

The attached photographs illustrate the actions that have been incorporated into the project area.

Mountain Valley believes the issues listed in the NOV have been fully addressed and resolved. If you have questions or need additional information, please do not hesitate to contact me at (724) 873-3009 or via email at mhoover@equitransmidstream.com.

Sincerely,

A handwritten signature in blue ink, appearing to read "m-hoover", is written over a horizontal line.

Matthew S. Hoover
Equitrans Midstream - Sr. Environmental Coordinator

CC: Project File

Attachment A
Corrective Action Photos



Photo 1: Photo illustrates the additional Priority 1 (P1) silt fence that have been installed and the filtration media has also been installed in front of existing compost filter sock (CFS).



Photo 2: Photo illustrates the cleaned sump upslope of Crosier Road.



Photo 3: Photo illustrates additional filtration media that has been installed in front of existing CFS. This is upslope of Crosier Road.



Photo 4: Photo illustrates the additional gravel that has been installed along Crosier Road.



Photo 5: Photo illustrates the additional ECDs, including CFS and supersilt fence (SSF) that have been installed along Crosier Road.



Photo 6: Photo illustrates the additional ECDs – CFS and additional gravel – that have been installed near the Crosier Road Culvert.



Photo 7: Photo illustrates the cleaned sump and additional CFS that has been installed near Station 7601+00.



Photo 8: Photo illustrates the additional rows of ECDs that have been installed near Station 7599+50.

Date & Time: Fri, Jul 05, 2019, 13:36:18 EDT
Position: +037.986109° / -080.758283°
Altitude: 2681ft
Datum: WGS-84
Azimuth/Bearing: 160° S20E 2844mils (True)
Elevation Angle: -29.8°
Horizon Angle: +00.4°
Zoom: 1X
DEP Item



Photo 9: Photo illustrates the cleaned sump and regraded slope near Station 7576+01.

Date & Time: Fri, Jul 05, 2019, 13:49:46 EDT
Position: +037.985212° / -080.757418°
Altitude: 2548ft
Datum: WGS-84
Azimuth/Bearing: 089° N89E 1582mils (True)
Elevation Angle: -39.3°
Horizon Angle: +04.6°
Zoom: 1X
DEP Item



Photo 10: Photo illustrates the sump cleanout near station 7604+01.



Photo 11: Photo illustrates the cleaned out area near Station 7656+00. The CFS has been replaced and the sediment has been pulled back onto the LOD. This area was identified as Station 7636+00 in the DEP report.



Photo 12: Photo illustrates the regraded broad-based dip in Access Road 192.

STATE OF WEST VIRGINIA
Department of Environmental Protection
Environmental Enforcement
NOTICE OF VIOLATION

Violation No W19-32-17-JTL

To the Operator or Agent of:

Facility Name: Mountain Valley Pipeline Project Permit No. WVR310667

Permittee or Individual: MOUNTAIN VALLEY PIPELINE, LLC

Located at or near: MVP ROW near Station #9780+00 in Monroe County

Representative: MATTHEW HOOVER Date: 6/12/19 Time: 12:00pm

Address / phone number: 625 LIBERTY AVE, ST 1700, PITTSBURG, PA 15222 / 7248733645

Whereas, an inspection of the above-named operation by the undersigned, duly authorized agent of the Secretary, at which the following described condition or practice exists, in violation of Chapter 22, Article 11, Section(s) 1 et. Seq. of the Code of West Virginia and/or Section(s) of the Rules and Regulations and/or Section(s) G. of the Permit referenced above promulgated thereunder in that you:

Have violated the following terms and conditions of WV/NPDES General Water Pollution Control Permit No. WV0116815, Registration No. WVR310667:

Section G.4.e.2.A.ii.j-Perimtte has allowed sediment laden to leave the site without going through and appropriate device: At station No. 9780+00 evidence that SLW had left the site was observed due to a significant amount of sediment deposits and scouring being present past controls and LOD. At the Dargo silt fence downslope of station No. 9780+00 sediment deposits was observed past controls and the LOD.

The following corrective measures were discussed with you at the time of this inspection:

Take measures to correct the aforementioned violations.

Within 20 days provide a written response to the inspector named below, at the address indicated, detailing the actions taken to abate this violation.

Received by:

Sent Certified Mail--

Signature

Title



Duly Authorized Agent /
Inspector

304-859-4399
Telephone

Jason.T.Liddle@wv.gov
E-mail

Send Response to the Inspector at the address indicated below:

WV Department of Environmental Protection
Environmental Enforcement / WW
1159 Rahall Greenway, Fayetteville, WV 25840



Above Anne's Branch crossing near station 9744+00. Facing upslope of MVP ROW. Erosion ongoing on road as well as slope above road. Arrow depicts LOD.



Controls added on edge of LOD to control run-on from adjacent property disturbance.



French drain installed at base of cut slope. Drain terminated into sump with controls and conveys under ROW to outlet that has sump present with controls.



Culvert outlet terminating in sump along AR 227.



Anne's Branch crossing near station No. 9744+00 facing downstream. Past disturbance observed from land owner traffic across stream.



Facing upstream at Anne's Branch crossing near station No. 9744+00.



Facing North towards Anne's Branch at station No. 9745+00.



Facing South near station No. 9745+00 on North side slope. Arrow depicts location of Dargo silt fence.



Facing Downslope at Dargo silt fence. Waterbar outlets in place with controls in foreground.



Dargo silt fence. Pipe slope drain terminating on ROW and not extended to edge of LOD. Arrow depicts slope drain outlet.



Pipe slope drain terminating onto ROW above controls (Dargo silt fence).



Standing below Dargo Silt fence facing upslope at controls.



Below Dargo silt fence. Sediment deposits observed past LOD and low-lying area not delineated as a wetland.



Standing on South Side slope facing downslope (North) at Dargo Silt fence.



Upslope of Dargo silt fence. Facing South towards AR-221. Arrow depicts where dozer work was ongoing during inspection and controls needed maintenance.



Controls below where dozer work was taking place. Sediment deposits observed below these controls at station No. 9780+00.



Below controls at station No. 9780+00 facing downslope at sediment deposits and scouring of leaf litter. Arrow depicts deposits.



Sediment Deposits below and past controls/LOD at station No. 9780+00. Arrow depicts deposits.



Scoring and sediment deposits below controls at station No. 9780+00. Red Arrow depicts deposits. Blue arrow depicts controls at edge of LOD.



Facing South towards Ellison Ridge Road. Waterbar blow out and repair observed where AR-221 comes onto ROW.



July 17, 2019

Mr. Jason Liddle
West Virginia DEP - Environmental Enforcement/WW
131 Peninsula St
Wheeling, WV 25304

Re: Mountain Valley Pipeline Project (Permit No. WVR310667)
Response to Notice of Violation No. W19-32-017-JTL

Dear Mr. Liddle:

This letter is in response to Notice of Violation (NOV) No. W19-32-017-JTL issued to Mountain Valley Pipeline, LLC (Mountain Valley) by the West Virginia Department of Environmental Protection (WVDEP). The inspection was completed on June 12, 2019 along portions of Spread F in Monroe County.

Mountain Valley investigated accordingly and completed the following corrective actions to address and abate any alleged issues within NOV No. W19-32-017-JTL:

Corrective Actions

- Pipe has been installed and the area is being permanently stabilized using erosion control blanketing, permanent waterbars, and seeding; and
- Additional Compost Filter Sock (CFS) has been installed near natural drainage swales and at the waterbar outlets, where necessary.

The attached photographs illustrate the actions that have been incorporated into the project area.

Mountain Valley believes the issues listed in the NOV have been fully addressed and resolved. If you have questions or need additional information, please do not hesitate to contact me at (724) 873-3009 or via email at mhoover@equitransmidstream.com.

Sincerely,

A handwritten signature in blue ink, appearing to read "m-hoover".

Matthew S. Hoover
Equitrans Midstream - Sr. Environmental Coordinator

CC: Project File

Attachment A
Corrective Action Photos



Photo 1: Photo illustrates the stabilized slope near the Dargo Pond. The pipe has been installed in this area. The red arrow is the drainage swale in the valley, leading to the Dargo Pond.



Photo 2: Photo illustrates another view of the slope near Dargo Pond. The red arrow is the approximate location of a subterranean drain.



Photo 3: The rock energy dissipater shown in the photo is the outlet of the subterranean drains near the Dargo pond.



Photo 4: Another view of the Dargo Pond area. The red arrow is the location of the compost filter socks in Photo 3.



Photo 5: Photo illustrates the stabilization and permanent water bars that have been installed near Dargo Pond.



Photo 6: Photo illustrates the CFS and temporary stabilization that have been installed in the area upslope of Dargo Pond.



Photo 7: Photo illustrates the permanent stabilization that has been installed near Station 9780+00.

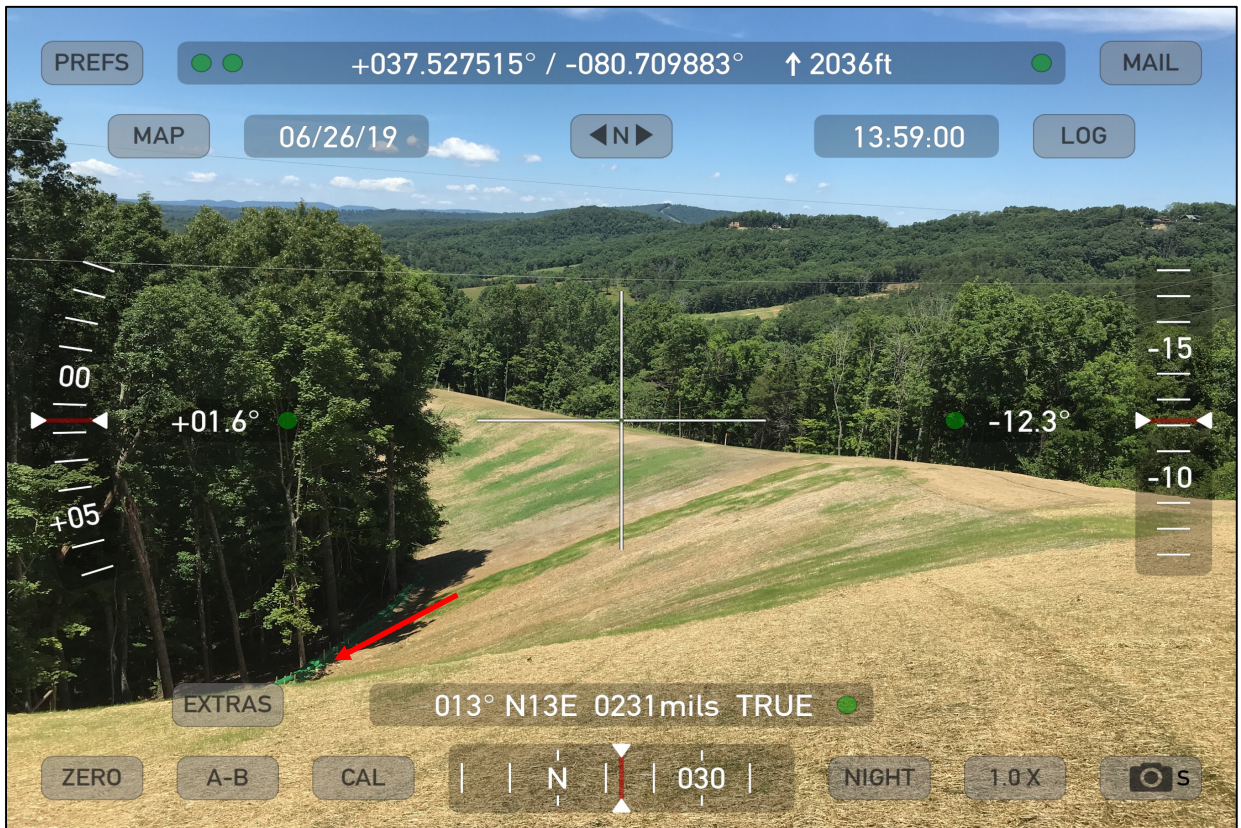


Photo 8: Photo illustrates the permanent stabilization and CFS that have been installed near Station 9780+00.

APPENDIX D
LANDOWNER CONCERNS

The following table includes information regarding landowner concerns and how they were resolved.

Tract ID	Spread / Facility	Station/ MP	Date of Concern	Date of Resolution	Issue and Resolution
WV-WE-5831	Spread A	4.8	11/13/2018	Pending	<p>Issue: L/O called the agent requesting his water source be tested. There has been a noticeable bad taste of water coming out of their faucets.</p> <p>Resolution: Environmental has been contacted so water testing can be done.</p> <ul style="list-style-type: none">• 12/12/2018- Water source was tested. Waiting on results.• 3/22/2019- The test results have been mailed to the L/O. Environmental is recommending additional retesting.• 5/3/2019- The second water test has been completed and the results are pending.• 7/19/19 – Results to be sent to landowner.

Tract ID	Spread / Facility	Station/ MP	Date of Concern	Date of Resolution	Issue and Resolution
WV-NI-029	Spread D	115.5	5/16/2019	7/12/2019	<p>Issue: L/O stated that the other side of the property is still not accessible due to a fence and a high dirt pile. It was also mentioned that a tree had fallen on a fence.</p> <p>Resolution: Construction is checking on the dirt pile. The fence however, is part of the E&S controls and will likely need to stay for the duration of reclamation.</p> <ul style="list-style-type: none"> • 5/21/2019- Agent met with the L/O to view areas of concern. The agent saw an area on the south side of the property that is wide open, but L/O needs access to the north side of the property. L/O wants the property back to the original contour and agent told him it would be when construction is complete. L/O stated that MVP knocked a tree over near the access road that is now blocking the road. Agent is investigating. • 6/11/2019- Agent met with the L/O to point out areas that were still accessible to the other side of the property and assured the L/O that the property would be restored at final reclamation. • 6/21/2019- Another meeting was scheduled with the L/O for next week to review options. • 6/28/2019 – Land agent and construction met to discuss options regarding the removal of E&S controls to open up access for the landowner to reach property. Landowner was informed E&S controls cannot be removed until the Project is complete. • 7/12/2019 – No further actions to be taken regarding this complaint.

Tract ID	Spread / Facility	Station/ MP	Date of Concern	Date of Resolution	Issue and Resolution
WV-NI-3521	Spread D	119.4	5/14/2019	Pending	<p>Issue: L/O reported cracks in the foundation after blasting. Agent documented photos.</p> <p>Resolution: A meeting was scheduled with the L/O, a representative from the blasting company, and an industrial engineer.</p> <ul style="list-style-type: none">• 5/21/2019- Agent and the project manager of Vibra-Tech assessed the foundation cracking. The project manager said a report will be compiled in about a month.• 6/14/2019- Waiting for the report to be compiled.• 6/21/2019- Agent confirmed the report is still being compiled.• 7/19/19 – Report will be provided to landowner upon scheduling of appointment.

Tract ID	Spread / Facility	Station/ MP	Date of Concern	Date of Resolution	Issue and Resolution
WV-GR-039	Spread E	147.5	5/14/2019	7/18/19	<p>Issue: L/O claims MVP let his red stag out. The L/O stated that some of the fencing outside MVP LOD had trees across them. The land agent mentioned that MVP has taken the necessary precautions to ensure gates/fences were kept up.</p> <p>Resolution: Agent spoke to the Department of Agriculture and was told the L/O was voluntarily closing out his license for Elk only. The Representative also stated that the L/O did not have a license for a red stag. Agent is to follow up with the L/O.</p> <ul style="list-style-type: none"> • 5/21/2019- Agent has tried to contact the L/O twice but was unable to reach them. They have not received a call back either. • 6/21/2019- Pending L/O communication. • 6/25/2019 – Water bars obstructing the bailing of hay. Chief gave permission to pull CFS so equipment can be moved, CFS will be replaced. • 7/10/2019 – Landowner is requesting compensation for his claim of lost animals due to MVP leaving gates open. Also claims MVP caused him to lose his permit for a red stag. • 7/18/2019 – Landowner communicates that he will not be taking any further action since there is no hard evidence that the gate was left open.

Tract ID	Spread / Facility	Station/ MP	Date of Concern	Date of Resolution	Issue and Resolution
WV-SU-5334	Spread F	158.9	9/27/2018	Pending	<p>Issue: Pellets used to stabilize the ROW for the winter and rainfall were distributed off the LOD.</p> <p>Resolution: Agent tried to follow up with the landowner, but now the L/O is being represented by an attorney</p> <ul style="list-style-type: none">• 10/12/2018- Landowner complaint received about pellets dropped on the property. This tract is to be handled through legal and agents are to have no further contact with the L/O.• 11/12/2018- L/O's attorney communicated to MVP a request of compensation for damages due to felled trees from MVP's construction activities.• 11/15/2018- Damage compensation and documents mailed to attorney for L/O to sign.• 4/17/2019- Construction and agents met with the L/O to answer questions.• 5/3/2019- Check was mailed for crushed items during construction.• 7/16/2019 – Landowner has concerns for their organic farm and contaminated water from wash station and equipment destroying farm. Landowner to meet with MVP to discuss on 7/30/19.

Tract ID	Spread / Facility	Station/ MP	Date of Concern	Date of Resolution	Issue and Resolution
VA-GI-4249	Spread G	213.8	6/28/2019	Pending	<p>Issue: Landowner's goats are getting onto the ROW; landowner wants thistle removed from ROW but does not allow herbicides</p> <p>Resolution: Documents signed by landowner state that the temporary fence installed to contain goats would be electric; there is not electric fencing installed and the goats are getting thru the barbed wire. Land agent to investigate; inspector to look into the removal of thistle on the ROW without the use of herbicides.</p> <ul style="list-style-type: none"> • 7/16/2019 – Agent inspected electric fencing that was installed to contain goats; electric was not working. Crews were notified to fix the fence and remove the thistle from the ROW.
VA-GI-4250	Spread G	215	7/3/2019	Pending	<p>Issue: Landowner wants thistle removed from ROW before spreading onto his property.</p> <p>Resolution: Inspector to identify means to eradicate thistle. If herbicides are used, landowner wants to know exactly what will be used.</p> <ul style="list-style-type: none"> • 7/16/2019 – Crews on site removing thistle. Silt was found off ROW and crews awaiting permission to retrieve.

Tract ID	Spread / Facility	Station/ MP	Date of Concern	Date of Resolution	Issue and Resolution
VA-MO-5528	Spread G	224	6/4/2019	Pending	<p>Issue: Silt was off the ROW in several locations. L/O is concerned about sediment in the hayfield and is worried he will not be able to sell the hay in August due to sediment being in it. The L/O signed sediment retrieval documents.</p> <p>Resolution: ECDs were repaired or replaced. This will continue to be monitored but the L/O has asked to be compensated.</p> <ul style="list-style-type: none"> • 6/13/2019- Meeting was held with the L/O. • 6/15/2019- Agent and L/O drove around the property. Most of the silt has washed out of the hayfield from the rains. The L/O pointed out that the sump has a five-inch hole in the bedrock where water runs into. Agent reported this to the karst specialists that will need to inspect. • 6/27/2019 – Land agent informed the land owner that the karst report will be provided upon finalization. • 7/12/2019 – Land agent confirmed that the issue has dissipated and there is no remaining trace of silt. • 7/17/19 – Due to heavy rain, more sediment off ROW. Landowner recently deceased, another part-owner signed documents to retrieve sediment. Land agent to follow up with landowner to confirm issues are resolved.

Tract ID	Spread / Facility	Station/ MP	Date of Concern	Date of Resolution	Issue and Resolution
VA-FR-050	Spread H	259.2	3/26/2019	Pending	<p>Issue: Agent reached out to the L/O about sediment retrieval. L/O is requesting additional payment for not being able to utilize their land for another year due to issues with permits being held up. L/O wants compensated for the delay in the project on their lands before discussing sediment retrieval.</p> <p>Resolution: Agent and lead agent are to meet with the L/O to discuss issues in the upcoming weeks.</p> <ul style="list-style-type: none">• 4/11/2019- Agent and L/O viewed the area of concern for sediment retrieval.• 4/26/2019- L/O is holding off on signing sediment retrieval documents until the fencing is fixed.• 7/5/19 – After several attempts, the agent spoke with L/O, negotiating additional L/O requests

Tract ID	Spread / Facility	Station/ MP	Date of Concern	Date of Resolution	Issue and Resolution
VA-FR-076.01	Spread I	262.4	12/1/2018	Pending	<p>Issue: L/O has several issues. Someone has trespassed and put caution tape and cones outside the LOD, timber mats have floated off the LOD and damaged a quarter mile of fencing, and timber has been stolen from the property.</p> <p>Resolution: Agent and construction are meeting with the L/O on 12/6/18.</p> <ul style="list-style-type: none"> • 1/25/2019- Construction confirmed that the mats did float off from a storm. They have been waiting on the L/O's approval to retrieve the mats. As soon as the L/O approves the removal, they will be retrieved. If any damage occurs from the retrieval process, then construction will repair the damage. The timber that was in question, was moved from the property to an ATWS. The trees were located and moved back to the property. • 3/1/2019- L/O has denied permission to retrieve the mats off the LOD. • 4/19/2019- The legal group is now handling the case. The attorney for the L/O has the information and the request to retrieve the timber mats. • 7/19/2019- L/O's attorney denied MVP's request to retrieve the timber mats. MVP will continue working with the L/O's attorney.
VA-FR-5476 C3	Spread I	265.0	7/5/2019	7/19/2019	<p>Issue: Due to heavy rain, mud has overrun or collapsed silt fencing along ROW and deposited mud across driveway.</p> <p>Resolution: Construction was notified.</p> <ul style="list-style-type: none"> • 7/19/2019 – Mud was cleaned off driveway, issue resolved.

APPENDIX E
VARIANCE CONDITIONS

None.