



625 Liberty Avenue, Suite 1700 | Pittsburgh, PA 15222
844-MVP-TALK | mail@mountainvalleypipeline.info
www.mountainvalleypipeline.info

July 5, 2018

Ms. Kimberly D. Bose, Secretary
Federal Energy Regulatory Commission
888 First Street NE
Washington, DC 20426

Re: Mountain Valley Pipeline, LLC
Docket No. CP16-10-000
Weekly Status Report No. 33

Dear Ms. Bose:

On October 13, 2017, the Federal Energy Regulatory Commission issued an order granting a Certificate of Public Convenience and Necessity to Mountain Valley Pipeline, LLC ("Mountain Valley") for the Mountain Valley Pipeline Project in the above-identified docket. On October 31, 2017, Mountain Valley submitted its Implementation Plan for the Project. In compliance with Environmental Condition Nos. 8 and 14, Mountain Valley submits its status report for the week ending June 15, 2018.

If you have any questions, please do not hesitate to contact me at (412) 553-5786 or meggerding@eqt.com. Thank you.

Respectfully submitted,
MOUNTAIN VALLEY PIPELINE, LLC
by and through its operator,
EQM Gathering OPCO, LLC

By: 
Matthew Eggerding
Senior Counsel, Midstream

Attachments

cc: All Parties
Paul Friedman, OEP
Lavinia DiSanto, Cardno, Inc.
Doug Mooneyhan, Cardno, Inc.

FEDERAL AUTHORIZATIONS

All federal authorizations have been received.

CONSTRUCTION STATUS

Construction activities and progress are included in Appendix A.

WORK PLANNED FOR NEXT REPORTING PERIOD

Mechanized clearing, and Prepare ROW will continue on all Spreads. Trenching will continue on Spreads B, C, D, F, and H. Stringing will continue on Spreads A, B, C, D, F, G, H, and I. Welding will continue on Spread A, B, C, D, F, G, H, and I. Coating and wrapping will continue on spreads C and F. Backfilling and tying-in will continue on spreads C, F, H, and I. Site construction will continue at the authorized compressor stations and interconnects in West Virginia. Road construction will continue in West Virginia. Coating and wrapping will commence on Spreads A, B, G, and H.

SCHEDULE CHANGES

There are no required schedule changes for waterbody crossings or work in other environmentally sensitive areas.

ENVIRONMENTAL ISSUES

The table in Appendix B summarizes problem area reports (PAR) and noncompliance reports (NCR) issued for the Project during the reporting period, as well as corrective actions taken to resolve the issue (including the cost and effectiveness of the corrective actions).

In the event Mountain Valley receives correspondence from other federal, state, or local permitting agencies concerning instances of noncompliance during the reporting period, Mountain Valley will include or reference such correspondence, as well as Mountain Valley's response thereto, in Appendix C.

LANDOWNER RESOLUTIONS

The table in Appendix D includes information regarding landowner concerns and how they were resolved.

VARIANCE CONDITIONS

In the event Mountain Valley is required to provide supplemental documentation as a condition to a variance request granted by the Federal Energy Regulatory Commission, Mountain Valley will include or reference such variances, as well as the required reporting, in Appendix E.

Appendix A Construction Status

Docket No. CP16-10-000
Weekly Report No. 33
Report Period: 06/09/18 - 06/15/18

Activity Name	Activity Status	% Complete
---------------	-----------------	------------

Compressor Stations

Bradshaw

Bradshaw Civil - Tree Felling	Completed	100%
Bradshaw Civil - Road Construction	In Progress	62.39%
Bradshaw Civil - Site Construction	In Progress	49.77%
Bradshaw Civil - Post Site Construction/Reclamation	Not Started	0%
Bradshaw Mechanical - Office Building Area	Not Started	0%
Bradshaw Mechanical - Discharge Filter Area	Not Started	0%
Bradshaw Mechanical - Auxiliary Equipment Area	Not Started	0%
Bradshaw Mechanical - Blowdown Silencer Area	Not Started	0%
Bradshaw Mechanical - Gas Cooler Area	Not Started	0%
Bradshaw Mechanical - Compressor Building Area	Not Started	0%
Bradshaw Mechanical - Suction Filter Area	Not Started	0%
Bradshaw Mechanical - Launcher/Receiver Area	Not Started	0%
Bradshaw Mechanical - Produced Fluids Area	Not Started	0%
Bradshaw Mechanical - Site Work Area	Not Started	0%
Bradshaw Mechanical - Commissioning	Not Started	0%

Harris

Harris Civil - Tree Felling	Completed	100%
Harris Civil - Road Construction	Completed	100%
Harris Civil - Site Construction	Completed	100%
Harris Civil - Post Site Construction/Reclamation	Not Started	0%
Harris Mechanical - Office Building Area	Not Started	0%
Harris Mechanical - Discharge Filter Area	Not Started	0%
Harris Mechanical - Auxiliary Equipment Area	Not Started	0%
Harris Mechanical - Blowdown Silencer Area	Not Started	0%
Harris Mechanical - Gas Cooler Area	Not Started	0%
Harris Mechanical - Compressor Building Area	Not Started	0%
Harris Mechanical - Suction Filter Area	Not Started	0%
Harris Mechanical - Launcher/Receiver Area	Not Started	0%
Harris Mechanical - Produced Fluids Area	Not Started	0%
Harris Mechanical - Site Work Area	Not Started	0%
Harris Mechanical - Commissioning	Not Started	0%

Stallworth

Stallworth Civil - Tree Felling	Completed	100%
Stallworth Civil - Road Construction	In Progress	63.85%
Stallworth Civil - Site Construction	In Progress	50.46%
Stallworth Civil - Post Site Construction/Reclamation	Not Started	0%
Stallworth Mechanical - Office Building Area	Not Started	0%
Stallworth Mechanical - Discharge Filter Area	Not Started	0%
Stallworth Mechanical - Auxiliary Equipment Area	Not Started	0%
Stallworth Mechanical - Blowdown Silencer Area	Not Started	0%
Stallworth Mechanical - Gas Cooler Area	Not Started	0%
Stallworth Mechanical - Compressor Building Area	Not Started	0%
Stallworth Mechanical - Suction Filter Area	Not Started	0%
Stallworth Mechanical - Launcher/Receiver Area	Not Started	0%
Stallworth Mechanical - Produced Fluids Area	Not Started	0%
Stallworth Mechanical - Site Work Area	Not Started	0%
Stallworth Mechanical - Commissioning	Not Started	0%

Appendix A Construction Status

Docket No. CP16-10-000
Weekly Report No. 33
Report Period: 06/09/18 - 06/15/18

Activity Name	Activity Status	% Complete
---------------	-----------------	------------

Interconnects

Mobley

Mobley Civil - Tree Felling	Completed	100%
Mobley Civil - Road Construction	In Progress	57.94%
Mobley Civil - Site Construction	In Progress	85.13%
Mobley Civil - Post Site Construction/Reclamation	Not Started	0%
Mobley Mechanical - GC Building Area	Not Started	0%
Mobley Mechanical - CV Building Area	Not Started	0%
Mobley Mechanical - Meter Building Area	Not Started	0%
Mobley Mechanical - Filter Area	Not Started	0%
Mobley Mechanical - Launcher/Receiver Area	Not Started	0%
Mobley Mechanical - Site Work Area	Not Started	0%
Mobley Mechanical - Commissioning	Not Started	0%

Sherwood

Sherwood Civil - Tree Felling	Not Started	0%
Sherwood Civil - Road Construction	Not Started	0%
Sherwood Civil - Site Construction	Not Started	0%
Sherwood Civil - Post Site Construction/Reclamation	Not Started	0%
Sherwood Mechanical - GC Building Area	Not Started	0%
Sherwood Mechanical - CV Building Area	Not Started	0%
Sherwood Mechanical - Meter Building Area	Not Started	0%
Sherwood Mechanical - Filter Area	Not Started	0%
Sherwood Mechanical - Launcher/Receiver Area	Not Started	0%
Sherwood Mechanical - Site Work Area	Not Started	0%
Sherwood Mechanical - Commissioning	Not Started	0%

WB

WB Civil - Tree Felling	Completed	100%
WB Civil - Road Construction	Completed	100%
WB Civil - Site Construction	Completed	100%
WB Civil - Post Site Construction/Reclamation	Not Started	0%
WB Mechanical - GC Building Area	Not Started	0%
WB Mechanical - CV Building Area	Not Started	0%
WB Mechanical - Meter Building Area	Not Started	0%
WB Mechanical - Filter Area	Not Started	0%
WB Mechanical - Launcher/Receiver Area	Not Started	0%
WB Mechanical - Site Work Area	Not Started	0%
WB Mechanical - Commissioning	Not Started	0%

Transco

Transco Civil - Tree Felling	Completed	100%
Transco Civil - Road Construction	Not Started	0%
Transco Civil - Site Construction	Not Started	0%
Transco Civil - Post Site Construction/Reclamation	Not Started	0%
Transco Mechanical - GC Building Area	Not Started	0%
Transco Mechanical - CV Building Area	Not Started	0%
Transco Mechanical - Meter Building Area	Not Started	0%
Transco Mechanical - Filter Area	Not Started	0%
Transco Mechanical - Launcher/Receiver Area	Not Started	0%
Transco Mechanical - Site Work Area	Not Started	0%
Transco Mechanical - Commissioning	Not Started	0%

Appendix A Construction Status

Docket No. CP16-10-000
Weekly Report No. 33
Report Period: 06/09/18 - 06/15/18

Activity Name	Activity Status	% Complete
Spreads (Pipeline)		
Spread A		
Spread A - Tree Felling	In Progress	99.95%
Spread A - Clearing	In Progress	34.86%
Spread A - Prepare right-of-way	In Progress	14.84%
Spread A - Trenching	Not Started	0%
Spread A - Stringing	In Progress	4.04%
Spread A - Welding	Not Started	0%
Spread A - Coating & Wrapping	Not Started	0%
Spread A - Backfilling & Tying-in	Not Started	0%
Spread A - Internal Cleaning	Not Started	0%
Spread A - Final Restoration	Not Started	0%
Spread B		
Spread B - Tree Felling	In Progress	99.54%
Spread B - Clearing	In Progress	29.96%
Spread B - Prepare right-of-way	In Progress	25.53%
Spread B - Trenching	Not Started	0%
Spread B - Stringing	In Progress	11.64%
Spread B - Welding	Not Started	0%
Spread B - Coating & Wrapping	Not Started	0%
Spread B - Backfilling & Tying-in	Not Started	0%
Spread B - Internal Cleaning	Not Started	0%
Spread B - Final Restoration	Not Started	0%
Spread C		
Spread C - Tree Felling	In Progress	97.9%
Spread C - Clearing	In Progress	29.47%
Spread C - Prepare right-of-way	In Progress	11.95%
Spread C - Trenching	Not Started	0%
Spread C - Stringing	In Progress	1.43%
Spread C - Welding	Not Started	0%
Spread C - Coating & Wrapping	Not Started	0%
Spread C - Backfilling & Tying-in	Not Started	0%
Spread C - Internal Cleaning	Not Started	0%
Spread C - Final Restoration	Not Started	0%
Spread D		
Spread D - Tree Felling	In Progress	99.9%
Spread D - Clearing	In Progress	38.71%
Spread D - Prepare right-of-way	In Progress	20.61%
Spread D - Trenching	In Progress	10.24%
Spread D - Welding	Not Started	0%
Spread D - Coating & Wrapping	Not Started	0%
Spread D - Backfilling & Tying-in	Not Started	0%
Spread D - Internal Cleaning	Not Started	0%
Spread D - Final Restoration	Not Started	0%
Spread D - Stringing	In Progress	9.49%
Spread E		
Spread E - Tree Felling	Completed	100%
Spread E - Clearing	In Progress	26.92%
Spread E - Prepare right-of-way	In Progress	14.73%
Spread E - Trenching	Not Started	0%

Appendix A Construction Status

Docket No. CP16-10-000
Weekly Report No. 33
Report Period: 06/09/18 - 06/15/18

Activity Name	Activity Status	% Complete
Spread E - Stringing	Not Started	0%
Spread E - Welding	Not Started	0%
Spread E - Coating & Wrapping	Not Started	0%
Spread E - Backfilling & Tying-in	Not Started	0%
Spread E - Internal Cleaning	Not Started	0%
Spread E - Final Restoration	Not Started	0%
Spread F		
Spread F - Tree Felling	In Progress	98.1%
Spread F - Clearing	In Progress	55.15%
Spread F - Prepare right-of-way	In Progress	22.75%
Spread F - Trenching	In Progress	12.33%
Spread F - Stringing	In Progress	5.41%
Spread F - Welding	In Progress	0.75%
Spread F - Coating & Wrapping	In Progress	0.45%
Spread F - Backfilling & Tying-in	In Progress	0.35%
Spread F - Internal Cleaning	Not Started	0%
Spread F - Final Restoration	Not Started	0%
Spread G		
Spread G - Tree Felling	In Progress	98.88%
Spread G - Clearing	In Progress	27.67%
Spread G - Prepare right-of-way	In Progress	18.17%
Spread G - Trenching	Not Started	0%
Spread G - Stringing	In Progress	13.34%
Spread G - Welding	Not Started	0%
Spread G - Coating & Wrapping	Not Started	0%
Spread G - Backfilling & Tying-in	Not Started	0%
Spread G - Internal Cleaning	Not Started	0%
Spread G - Final Restoration	Not Started	0%
Spread H		
Spread H - Tree Felling	In Progress	92.34%
Spread H - Clearing	In Progress	30.45%
Spread H - Prepare right-of-way	In Progress	20.11%
Spread H - Trenching	In Progress	1.84%
Spread H - Stringing	In Progress	16.6%
Spread H - Welding	Not Started	0%
Spread H - Coating & Wrapping	Not Started	0%
Spread H - Backfilling & Tying-in	Not Started	0%
Spread H - Internal Cleaning	Not Started	0%
Spread H - Final Restoration	Not Started	0%
Spread I		
Spread I - Tree Felling	In Progress	99.6%
Spread I - Clearing	In Progress	32.46%
Spread I - Prepare right-of-way	In Progress	15.59%
Spread I - Trenching	Not Started	0%
Spread I - Stringing	In Progress	0.91%
Spread I - Welding	Not Started	0%
Spread I - Coating & Wrapping	Not Started	0%
Spread I - Backfilling & Tying-in	In Progress	0.04%
Spread I - Internal Cleaning	Not Started	0%
Spread I - Final Restoration	Not Started	0%



Appendix A Construction Status

Docket No. CP16-10-000
Weekly Report No. 33
Report Period: 06/09/18 - 06/15/18

Activity Name

Activity Status

% Complete

Contractor Yards

West Virginia Locations

MVP-LY-038	Completed	100%
MVP-LY-069	Completed	100%
MVP-LY-051	Completed	100%
MVP-LY-027	Completed	100%
MVP-CY-002A	Not Started	0%
MVP-CY-002	Not Started	0%
MVP-LY-037	Not Started	0%
MVP-LY-016	Not Started	0%
MVP-LY-050	In Progress	55%
MVP-LY-030	Completed	100%
MVP-LY-025	Not Started	0%
MVP-LY-022	Completed	100%
MVP-LY-005	Completed	100%
MVP-LY-004	Completed	100%
MVP-LY-021	Completed	100%
MVP-LY-001A	Completed	100%
MVP-AP-002	Not Started	0%
MVP-SA-001	Not Started	0%
MVP-LOG-001	Not Started	0%
MVP-AP-001	Not Started	0%
MVP-LY-017	In Progress	95%
MVP-LY-013	Completed	100%
MVP-LY-003	Completed	100%
MVP-LY-001	Completed	100%
MVP-RD-001B	Not Started	0%
MVP-RD-001A	Not Started	0%
MVP-LY-024	Not Started	0%
MVP-LY-057	Completed	100%
MVP-LY-070	In Progress	50%
MVP-LY-068	In Progress	60%
MVP-LY-059	In Progress	20%
MVP-LY-058	In Progress	10%
MVP-LY-052	Not Started	0%
MVP-LY-065	Not Started	0%
MVP-LY-031	Not Started	0%
MVP-LY-002	Not Started	0%

Virginia Locations

MVP-LY-1019	Completed	100%
MVP-LY-028	In Progress	85%
MVP-LY-026	In Progress	90%
MVP-LY-035	Not Started	0%
MVP-LY-034	Completed	100%
MVP-LY-033	Completed	100%
MVP-LY-032	Completed	100%
MVP-PY-006	In Progress	99%
MVP-LY-046	Not Started	0%
MVP-LY-045	Not Started	0%
MVP-LY-048	Not Started	0%
MVP-LY-029	Not Started	0%

APPENDIX B**ENVIRONMENTAL COMPLIANCE**

The following table summarizes problem area reports (PAR) and noncompliance reports (NCR) issued for the Project during the reporting period, as well as corrective actions taken to resolve the issue (including the cost and effectiveness of the corrective actions).

Compliance	Spread	Location	Description and Date	Correction and Date
NCR	A	323+50 to 324+50	6/12/2018 - Contractor built temporary diversion berm outside of the LOD. Berm was 3 to 4 feet outside, for about 100 feet at station 323+50 to 324+50	Pending - Land agent was contacted on 6/13/2018. Waiting on L/O approval to remove the material. Material will be put back immediately following approval with equipment sitting inside the LOD.
PAR	B	2573+65	3/14/2018 - Hanger 3, hanging outside of LOD	Pending - Will be moved in LOD during mechanical clearing.
PAR	B	2592+00	3/15/2018 - Tree rolled out of the LOD. Crews will be able to retrieve from inside the LOD. No off ROW disturbance.	Pending - Will be moved in LOD during mechanical clearing.
PAR	B	2594+00	3/15/2018 - Tree rolled out of the LOD. Crews will be able to retrieve from inside the LOD. No off ROW disturbance.	Pending - Will be moved in LOD during mechanical clearing.

Compliance	Spread	Location	Description and Date	Correction and Date
PAR	B	2608+00	3/15/2018 - Tree rolled out of the LOD leaving the butt inside the ROW. Crews s-hooked the tree and will be able to retrieve from inside the LOD. No off ROW disturbance.	Pending - Will be moved in LOD during mechanical clearing.
PAR	B	2641+00	3/15/2018 - Tree rolled out of the LOD on steep slope.	Pending - Will be moved in LOD during mechanical clearing.
PAR	B	2642+00	3/15/2018 - Tree rolled out of the LOD on steep slope.	Pending - Will be moved in LOD during mechanical clearing.
PAR	B	2583+22	3/15/2018 - Tree rolled out of the LOD. Crews will be able to retrieve from inside the LOD. No off ROW disturbance.	Pending - Will be moved in LOD during mechanical clearing.
PAR	B	2585+19	3/15/2018 - Tree rolled out of the LOD. Crews will be able to retrieve from inside the LOD. No off ROW disturbance.	Pending - Will be moved in LOD during mechanical clearing.
PAR	B	2670+15	3/16/2018 - Tree felled out of the LOD due to natural wind damage.	Pending - Will be moved in LOD during mechanical clearing.
PAR	B	2681+00	3/16/2018 - Tree rolled out of the LOD. Crews will be able to retrieve from inside the LOD. No off ROW disturbance.	Pending - Will be moved in LOD during mechanical clearing.

Compliance	Spread	Location	Description and Date	Correction and Date
PAR	B	2670+15	3/16/2018 - Tree rolled out of the LOD. Crews will be able to retrieve from inside the LOD. No off ROW disturbance.	Pending - Will be moved in LOD during mechanical clearing.
PAR	B	2659+00-2653+00	3/16/2018 - Tree rolled out of the LOD on steep side slope rock bluff.	Pending - Will be moved in LOD during mechanical clearing.
PAR	B	2659+00-2653+00	3/16/2018 - Tree rolled out of the LOD on steep slide rock bluff. Crews will be able to retrieve from inside the LOD. No off ROW disturbance.	Pending - Will be moved in LOD during mechanical clearing.
PAR	B	2636+84	3/16/2018 - Tree rolled out of the LOD. Crews will be able to retrieve from inside the LOD. No off ROW disturbance.	Pending - Will be moved in LOD during mechanical clearing.
PAR	B	2615+03	3/16/2018 – Tree hung with the top outside ROW. Crews will be able to retrieve from inside the LOD. No off ROW disturbance.	Pending - Will be moved in LOD during mechanical clearing.
PAR	B	2570+00	3/17/2018 - Tree rolled out of the LOD. Crews will be able to retrieve from inside the LOD. No off ROW disturbance.	Pending - Will be moved in LOD during mechanical clearing.
PAR	B	2767+87	3/17/2018 - Tree rolled out of the LOD. Crews will be able to retrieve from inside the LOD. No off ROW disturbance.	Pending - Will be moved in LOD during mechanical clearing.

Compliance	Spread	Location	Description and Date	Correction and Date
PAR	B	2653+00 - 2659+00	3/17/2018 - Tree rolled out of the LOD. Crews will be able to retrieve from inside the LOD. No off ROW disturbance.	Pending - Will be moved in LOD during mechanical clearing.
PAR	B	2665+00	3/17/2018 - Tree rolled out of the LOD. Crews will be able to retrieve from inside the LOD. No off ROW disturbance.	Pending - Will be moved in LOD during mechanical clearing.
PAR	B	2661+00	3/17/2018 - Tree rolled out of the LOD. Crews will be able to retrieve from inside the LOD. No off ROW disturbance.	Pending - Will be moved in LOD during mechanical clearing.
PAR	B	2597+89	3/17/2018 - Tree rolled out of the LOD. Crews will be able to retrieve from inside the LOD. No off ROW disturbance.	Pending - Will be moved in LOD during mechanical clearing.
PAR	B	2597+89	3/17/2018 - Tree rolled out of the LOD. Crews will be able to retrieve from inside the LOD. No off ROW disturbance.	Pending - Will be moved in LOD during mechanical clearing.
PAR	B	2641+00	3/17/2018 – As crew cut a tree, the limbs were caught on another tree. Limbs have been left hanging.	Pending - Will be moved in LOD during mechanical clearing.
PAR	B	2642+00	3/17/2018 – As crew cut a tree, the limbs were caught on another tree. Limbs have been left hanging.	Pending - Will be moved in LOD during mechanical clearing.

Compliance	Spread	Location	Description and Date	Correction and Date
PAR	B	2643+00	3/17/2018 – Tree top rolled out of the LOD. Too dangerous for crew to retrieve, due to safety issues.	Pending - Will be moved in LOD during mechanical clearing.
PAR	B	2644+00	3/17/2018 - Tree rolled out of the LOD. Crews will be able to retrieve from inside the LOD. No off ROW disturbance.	Pending - Will be moved in LOD during mechanical clearing.
PAR	B	2651+00	3/17/2018 – As crew cut a tree, the limbs were caught on another tree. Limbs have been left hanging.	Pending - Will be moved in LOD during mechanical clearing.
PAR	B	2666+00	3/17/2018 - Tree rolled out of the LOD. Crews will be able to retrieve from inside the LOD. No off ROW disturbance.	Pending - Will be moved in LOD during mechanical clearing.
PAR	B	2611+38	3/17/2018 – As crew cut a tree, the limbs were caught on another tree. Limbs have been left hanging.	Pending - Will be moved in LOD during mechanical clearing.
PAR	B	2614+44	3/17/2018 - Tree hung and another rolled out of the LOD. Crews will be able to retrieve from inside the LOD. No off ROW disturbance.	Pending - Will be moved in LOD during mechanical clearing.
PAR	B	2615+03	3/17/2018 - Tree rolled out of the LOD. Crews will be able to retrieve from inside the LOD. No off ROW disturbance.	Pending - Will be moved in LOD during mechanical clearing.

Compliance	Spread	Location	Description and Date	Correction and Date
PAR	B	2631+00	3/17/2018 - Tree rolled out of the LOD. Crews will be able to retrieve from inside the LOD. No off ROW disturbance.	Pending - Will be moved in LOD during mechanical clearing.
PAR	B	AWTS-804	3/19/2018 - Tree top fell out of the LOD. Crews will be able to retrieve from inside the LOD. No off ROW disturbance.	Pending - Will be moved in LOD during mechanical clearing.
PAR	B	2707+00	3/19/2018 - Tree top fell out of the LOD and a tree was hung outside of LOD. Crews will be able to retrieve from inside the LOD. No off ROW disturbance.	Pending - Will be moved in LOD during mechanical clearing.
PAR	B	2706+00	3/19/2018 - Tree top fell out of the LOD. Crews will be able to retrieve from inside the LOD. No off ROW disturbance.	Pending - Will be moved in LOD during mechanical clearing.
PAR	B	2709+07	3/19/2018 - Three tree tops and two tree hangers fell out of the LOD. Crews will be able to retrieve from inside the LOD. No off ROW disturbance.	Pending - Will be moved in LOD during mechanical clearing.
PAR	B	2721+43	3/19/2018 - Tree top fell out of the LOD. Crews will be able to retrieve from inside the LOD. No off ROW disturbance.	Pending - Will be moved in LOD during mechanical clearing.

Compliance	Spread	Location	Description and Date	Correction and Date
PAR	B	2721+25	3/19/2018 - Tree top fell out of the LOD. Crews will be able to retrieve from inside the LOD. No off ROW disturbance.	Pending - Will be moved in LOD during mechanical clearing.
PAR	B	2723+00	3/19/2018 - Tree top fell out of the LOD. Crews will be able to retrieve from inside the LOD. No off ROW disturbance.	Pending - Will be moved in LOD during mechanical clearing.
PAR	B	2762+30	3/19/2018 - Tree top fell out of the LOD. Crews will be able to retrieve from inside the LOD. No off ROW disturbance.	Pending - Will be moved in LOD during mechanical clearing.
PAR	B	2748+00	3/19/2018 - Tree rolled out of the LOD. Crews will be able to retrieve from inside the LOD. No off ROW disturbance.	Pending - Will be moved in LOD during mechanical clearing.
PAR	B	2739+00	3/19/2018 - Tree rolled out of the LOD. Crews will be able to retrieve from inside the LOD. No off ROW disturbance.	Pending - Will be moved in LOD during mechanical clearing.
PAR	B	2726+95	3/19/2018 - Tree top fell out of the LOD. Crews will be able to retrieve from inside the LOD. No off ROW disturbance.	Pending - Will be moved in LOD during mechanical clearing.

Compliance	Spread	Location	Description and Date	Correction and Date
PAR	B	2729+00	3/19/2018 - Tree top fell out of the LOD. Crews will be able to retrieve from inside the LOD. No off ROW disturbance.	Pending - Will be moved in LOD during mechanical clearing.
PAR	B	2728+90	3/19/2018 - Tree top fell out of the LOD. Crews will be able to retrieve from inside the LOD. No off ROW disturbance.	Pending - Will be moved in LOD during mechanical clearing.
PAR	B	2749+80	3/19/2018 - Tree top fell out of the LOD. Crews will be able to retrieve from inside the LOD. No off ROW disturbance.	Pending - Will be moved in LOD during mechanical clearing.
PAR	B	2726+78	3/19/2018 - Tree top fell out of the LOD. Crews will be able to retrieve from inside the LOD. No off ROW disturbance.	Pending - Will be moved in LOD during mechanical clearing.
PAR	B	2737+00	3/19/2018 - Tree top fell out of the LOD. Crews will be able to retrieve from inside the LOD. No off ROW disturbance.	Pending - Will be moved in LOD during mechanical clearing.
PAR	B	2778+00	3/19/2018 - Tree top fell out of the LOD. Crews will be able to retrieve from inside the LOD. No off ROW disturbance.	Pending - Will be moved in LOD during mechanical clearing.

Compliance	Spread	Location	Description and Date	Correction and Date
PAR	B	2730+00	3/19/2018 - Tree top fell out of the LOD. Crews will be able to retrieve from inside the LOD. No off ROW disturbance.	Pending - Will be moved in LOD during mechanical clearing.
PAR	B	2728+74	3/19/2018 - Tree butt rolled out of the LOD. Crews will be able to retrieve from inside the LOD. No off ROW disturbance.	Pending - Will be moved in LOD during mechanical clearing.
PAR	B	ATWS-078	3/20/2018 - Tree top fell out of the LOD. Crews will be able to retrieve from inside the LOD. No off ROW disturbance.	Pending - Will be moved in LOD during mechanical clearing.
PAR	B	2728+67	3/20/2018 - Tree top fell out of the LOD. Crews will be able to retrieve from inside the LOD. No off ROW disturbance.	Pending - Will be moved in LOD during mechanical clearing.
PAR	B	2726+75	3/20/2018 - Tree rolled out of the LOD. Crews will be able to retrieve from inside the LOD. No off ROW disturbance.	Pending - Will be moved in LOD during mechanical clearing.
PAR	B	2734+00	3/20/2018 - Tree top fell out of the LOD. Crews will be able to retrieve from inside the LOD. No off ROW disturbance.	Pending - Will be moved in LOD during mechanical clearing.

Compliance	Spread	Location	Description and Date	Correction and Date
PAR	B	2762+00	3/20/2018 - Tree top fell out of the LOD. Crews will be able to retrieve from inside the LOD. No off ROW disturbance.	Pending - Will be moved in LOD during mechanical clearing.
PAR	B	2713+00	3/20/2018 - Tree top fell out of the LOD. Crews will be able to retrieve from inside the LOD. No off ROW disturbance.	Pending - Will be moved in LOD during mechanical clearing.
PAR	B	2714+00	3/20/2018 - Tree top fell out of the LOD. Crews will be able to retrieve from inside the LOD. No off ROW disturbance.	Pending - Will be moved in LOD during mechanical clearing.
PAR	B	2715+00	3/20/2018 - Tree top fell out of the LOD. Crews will be able to retrieve from inside the LOD. No off ROW disturbance.	Pending - Will be moved in LOD during mechanical clearing.
PAR	B	2716+00	3/20/2018 - Tree rolled out of the LOD and a tree top also fell out of the LOD. Crews will be able to retrieve from inside the LOD. No off ROW disturbance.	Pending - Will be moved in LOD during mechanical clearing.
PAR	B	2717+00	3/20/2018 - Tree rolled out of the LOD. Crews will be able to retrieve from inside the LOD. No off ROW disturbance.	Pending - Will be moved in LOD during mechanical clearing.

Compliance	Spread	Location	Description and Date	Correction and Date
PAR	B	2717+98	3/20/2018 - Tree top fell out of the LOD. Crews will be able to retrieve from inside the LOD. No off ROW disturbance.	Pending - Will be moved in LOD during mechanical clearing.
PAR	B	2720+00	3/20/2018 - Tree top fell out of the LOD. Crews will be able to retrieve from inside the LOD. No off ROW disturbance.	Pending - Will be moved in LOD during mechanical clearing.
PAR	B	2775+80	3/22/2018 - Tree hangers out of the LOD. Crews will be able to retrieve from inside the LOD. No off ROW disturbance.	Pending - Will be moved in LOD during mechanical clearing.
PAR	B	2774+60	3/22/2018 - Tree top fell out of the LOD. Crews will be able to retrieve from inside the LOD. No off ROW disturbance.	Pending - Will be moved in LOD during mechanical clearing.
PAR	B	2778+00	3/22/2018 - Tree top fell out of the LOD. Crews will be able to retrieve from inside the LOD. No off ROW disturbance.	Pending - Will be moved in LOD during mechanical clearing.
PAR	B	2779+00	3/22/2018 - Tree top fell out of the LOD. Crews will be able to retrieve from inside the LOD. No off ROW disturbance.	Pending - Will be moved in LOD during mechanical clearing.

Compliance	Spread	Location	Description and Date	Correction and Date
PAR	B	2788+25	3/22/2018 - Tree rolled out of the LOD. Crews will be able to retrieve from inside the LOD. No off ROW disturbance.	Pending - Will be moved in LOD during mechanical clearing.
PAR	B	2783+00	3/22/2018 - Tree top fell out of the LOD. Crews will be able to retrieve from inside the LOD. No off ROW disturbance.	Pending - Will be moved in LOD during mechanical clearing.
PAR	B	2780+40	3/22/2018 - Tree rolled out of the LOD. Crews will be able to retrieve from inside the LOD. No off ROW disturbance.	Pending - Will be moved in LOD during mechanical clearing.
PAR	B	2782+00	3/22/2018 - Tree rolled out of the LOD. Crews will be able to retrieve from inside the LOD. No off ROW disturbance.	Pending - Will be moved in LOD during mechanical clearing.
PAR	B	2781+00	3/22/2018 – One tee top fell out of the LOD and one tree rolled out of LOD. Crews will be able to retrieve from inside the LOD. No off ROW disturbance.	Pending - Will be moved in LOD during mechanical clearing.
PAR	B	2792+90	3/22/2018 - Tree top fell out of the LOD. Crews will be able to retrieve from inside the LOD. No off ROW disturbance.	Pending - Will be moved in LOD during mechanical clearing.

Compliance	Spread	Location	Description and Date	Correction and Date
PAR	B	ATWS-478	3/22/2018 – Tree butt fell outside of the LOD. Crews will be able to retrieve from inside the LOD. No off ROW disturbance.	Pending - Will be moved in LOD during mechanical clearing.
PAR	B	2726+00	3/22/2018 - Tree fell out of the LOD. Crews will be able to retrieve from inside the LOD. No off ROW disturbance.	Pending - Will be moved in LOD during mechanical clearing.
PAR	B	2726+95	3/22/2018 - Tree top fell out of the LOD. Crews will be able to retrieve from inside the LOD. No off ROW disturbance.	Pending - Will be moved in LOD during mechanical clearing.
PAR	B	2724+11	3/22/2018 - Tree top fell out of the LOD. Crews will be able to retrieve from inside the LOD. No off ROW disturbance.	Pending - Will be moved in LOD during mechanical clearing.
PAR	B	2728+00	3/22/2018 - Tree top fell out of the LOD. Crews will be able to retrieve from inside the LOD. No off ROW disturbance.	Pending - Will be moved in LOD during mechanical clearing.
PAR	B	2724+11	3/22/2018 - Tree butt fell out of the LOD. Crews will be able to retrieve from inside the LOD. No off ROW disturbance.	Pending - Will be moved in LOD during mechanical clearing.

Compliance	Spread	Location	Description and Date	Correction and Date
PAR	B	2725+50	3/22/2018 - Tree butt fell out of the LOD. Crews will be able to retrieve from inside the LOD. No off ROW disturbance.	Pending - Will be moved in LOD during mechanical clearing.
PAR	B	2725+00	3/22/2018 - Tree rolled out of the LOD. Crews will be able to retrieve from inside the LOD. No off ROW disturbance.	Pending - Will be moved in LOD during mechanical clearing.
PAR	B	2728+67	3/22/2018 - Tree top fell out of the LOD, two tree butts rolled out of the LOD. Crews will be able to retrieve from inside the LOD. No off ROW disturbance.	Pending - Will be moved in LOD during mechanical clearing.
PAR	B	2733+00	3/22/2018 - Tree top fell out of the LOD. Crews will be able to retrieve from inside the LOD. No off ROW disturbance.	Pending - Will be moved in LOD during mechanical clearing.
PAR	B	2759+00	3/22/2018 - Tree rolled out of the LOD. Crews will be able to retrieve from inside the LOD. No off ROW disturbance.	Pending - Will be moved in LOD during mechanical clearing.
PAR	B	2760+03	3/22/2018 - Tree top fell out of the LOD. Crews will be able to retrieve from inside the LOD. No off ROW disturbance.	Pending - Will be moved in LOD during mechanical clearing.

Compliance	Spread	Location	Description and Date	Correction and Date
PAR	B	2731+00	3/22/2018 - Tree top fell out of the LOD. Crews will be able to retrieve from inside the LOD. No off ROW disturbance.	Pending - Will be moved in LOD during mechanical clearing.
PAR	B	2733+00	3/22/2018 - Tree top fell out of the LOD. Crews will be able to retrieve from inside the LOD. No off ROW disturbance.	Pending - Will be moved in LOD during mechanical clearing.
PAR	B	2729+53	3/22/2018 - Tree limbs fell out of the LOD. Crews will be able to retrieve from inside the LOD. No off ROW disturbance.	Pending - Will be moved in LOD during mechanical clearing.
PAR	B	2729+00	3/22/2018 - Tree top fell out of the LOD. Crews will be able to retrieve from inside the LOD. No off ROW disturbance.	Pending - Will be moved in LOD during mechanical clearing.
PAR	B	2758+49	3/22/2018 - Tree top fell out of the LOD. One tree rolled out of the LOD. Crews will be able to retrieve from inside the LOD. No off ROW disturbance.	Pending - Will be moved in LOD during mechanical clearing.
PAR	B	2758+00	3/22/2018 - Tree rolled out of the LOD. Crews will be able to retrieve from inside the LOD. No off ROW disturbance.	Pending - Will be moved in LOD during mechanical clearing.

Compliance	Spread	Location	Description and Date	Correction and Date
PAR	B	2740+00	3/23/2018 - Tree top fell out of the LOD. Crews will be able to retrieve from inside the LOD. No off ROW disturbance.	Pending - Will be moved in LOD during mechanical clearing.
PAR	B	2754+00	3/23/2018 - Tree top fell out of the LOD. Crews will be able to retrieve from inside the LOD. No off ROW disturbance.	Pending - Will be moved in LOD during mechanical clearing.
PAR	B	2751+00	3/23/2018 - Tree top fell out of the LOD. Crews will be able to retrieve from inside the LOD. No off ROW disturbance.	Pending - Will be moved in LOD during mechanical clearing.
PAR	B	2756+00	3/23/2018 – Two tree tops and one tree rolled out of the LOD. Crews will be able to retrieve from inside the LOD. No off ROW disturbance.	Pending - Will be moved in LOD during mechanical clearing.
PAR	B	2755+33	3/23/2018 - Tree top fell out of the LOD. Crews will be able to retrieve from inside the LOD. No off ROW disturbance.	Pending - Will be moved in LOD during mechanical clearing.
PAR	B	2755+54	3/23/2018 - Tree rolled out of the LOD. Not accessible from LOD.	Pending - Will be moved in LOD during mechanical clearing.
PAR	B	2754+00	3/23/2018 – One tree and one tree butt rolled out of the LOD. Not accessible from LOD.	Pending - Will be moved in LOD during mechanical clearing.

Compliance	Spread	Location	Description and Date	Correction and Date
PAR	B	2753+00	3/23/2018 - Tree top fell out of the LOD. Crews will be able to retrieve from inside the LOD. No off ROW disturbance.	Pending - Will be moved in LOD during mechanical clearing.
PAR	B	2752+00	3/23/2018 - Tree top fell out of the LOD. Crews will be able to retrieve from inside the LOD. No off ROW disturbance.	Pending - Will be moved in LOD during mechanical clearing.
PAR	B	2751+00	3/23/2018 - Tree rolled out of the LOD. Crews will be able to retrieve from inside the LOD. No off ROW disturbance.	Pending - Will be moved in LOD during mechanical clearing.
PAR	B	2841+00	3/23/2018 – Three tree tops and one hanger fell out of the LOD. Crews will be able to retrieve from inside the LOD. No off ROW disturbance.	Pending - Will be moved in LOD during mechanical clearing.
PAR	B	2836+00	3/23/2018 - Tree top fell out of the LOD. Crews will be able to retrieve from inside the LOD. No off ROW disturbance.	Pending - Will be moved in LOD during mechanical clearing.
PAR	B	2836+72	3/23/2018 - Tree top fell out of the LOD. Crews will be able to retrieve from inside the LOD. No off ROW disturbance.	Pending - Will be moved in LOD during mechanical clearing.

Compliance	Spread	Location	Description and Date	Correction and Date
PAR	B	2832+00	3/23/2018 - Tree top fell out of the LOD. Crews will be able to retrieve from inside the LOD. No off ROW disturbance.	Pending - Will be moved in LOD during mechanical clearing.
PAR	B	2833+00	3/23/2018 - Tree top fell out of the LOD. Crews will be able to retrieve from inside the LOD. No off ROW disturbance.	Pending - Will be moved in LOD during mechanical clearing.
PAR	B	2834+00	3/23/2018 - Tree top fell out of the LOD. Crews will be able to retrieve from inside the LOD. No off ROW disturbance.	Pending - Will be moved in LOD during mechanical clearing.
FERC Communication Report	B	2844+00	3/24/2018 - Tree top fell out of the LOD. Crews will be able to retrieve from inside the LOD. No off ROW disturbance.	Pending - Will be moved in LOD during mechanical clearing.
FERC Communication Report	B	2845+00	3/24/2018 - Tree top fell out of the LOD. Crews will be able to retrieve from inside the LOD. No off ROW disturbance.	Pending - Will be moved in LOD during mechanical clearing.
FERC Communication Report	B	2835+41	3/24/2018 - Tree top fell out of the LOD. Crews will be able to retrieve from inside the LOD. No off ROW disturbance.	Pending - Will be moved in LOD during mechanical clearing.

Compliance	Spread	Location	Description and Date	Correction and Date
FERC Communication Report	B	2836+00	3/24/2018 - Tree top fell out of the LOD. Crews will be able to retrieve from inside the LOD. No off ROW disturbance.	Pending - Will be moved in LOD during mechanical clearing.
FERC Communication Report	B	2838+00	3/24/2018 - Tree top fell out of the LOD. Crews will be able to retrieve from inside the LOD. No off ROW disturbance.	Pending - Will be moved in LOD during mechanical clearing.
FERC Communication Report	B	2904+00	3/24/2018 - Tree top fell out of the LOD. Crews will be able to retrieve from inside the LOD. No off ROW disturbance.	Pending - Will be moved in LOD during mechanical clearing.
FERC Communication Report	B	2903+48	3/24/2018 - Tree top fell out of the LOD. Crews will be able to retrieve from inside the LOD. No off ROW disturbance.	Pending - Will be moved in LOD during mechanical clearing.
FERC Communication Report	B	2908+00	3/24/2018 - Tree butt rolled out of the LOD.	Pending - Will be moved in LOD during mechanical clearing.
NCR (self report)	B	2868+00	3/29/18 - Two trees were cut outside the LOD	Pending - Will be moved in LOD during mechanical clearing.
FERC Communication Report	B	2872+00	3/29/18 - Tree butt fell out of the LOD.	Pending - Will be moved in LOD during mechanical clearing.

Compliance	Spread	Location	Description and Date	Correction and Date
FERC Communication Report	B	2874+00	3/29/18 - Tree butt fell out of the LOD.	Pending - Will be moved in LOD during mechanical clearing.
FERC Communication Report	B	2877+51	3/29/18 - Tree top rolled out of the LOD.	Pending - Will be moved in LOD during mechanical clearing.
FERC Communication Report	B	2898+00	3/26/18 - Tree butt fell out of the LOD.	Pending - Will be moved in LOD during mechanical clearing.
NCR	B	Access Road MVP-LE-054	6/6/2018 - Contractor built four pull offs and a turnaround on LE-054, outside of the LOD and without obtaining approval first.	Pending- MVP is working with the DEP and FERC on a resolution.
PAR	D	6301+00	4/3/18 - Tree fell off LOD. No ground disturbance off ROW. Can be moved back onto ROW with equipment.	Pending- Will be moved onto ROW during mechanical process.
PAR	D	6130+00	4/4/18 - Tree fell off LOD. No ground disturbance off ROW. Can be moved back onto ROW with equipment.	Pending- Will be moved onto ROW during mechanical process.
PAR	D	6469+25	4/4/18 - Tree fell off LOD. No ground disturbance off ROW. Can be moved back onto ROW with equipment.	Pending- Will be moved onto ROW during mechanical process.

Compliance	Spread	Location	Description and Date	Correction and Date
PAR	D	6432+50	4/4/18 - Tree fell off LOD. No ground disturbance off ROW. Can be moved back onto ROW with equipment.	Pending- Will be moved onto ROW during mechanical process.
PAR	D	6457+20	4/4/18 - Tree fell off LOD. No ground disturbance off ROW. Can be moved back onto ROW with equipment.	Pending- Will be moved onto ROW during mechanical process.
PAR	D	6249+00	4/6/18 - Tree fell off LOD. No ground disturbance off ROW. Can be moved back onto ROW with equipment.	Pending- Will be moved onto ROW during mechanical process.
FERC Communication Report	E	6829+00	5/5/2018 - Tree was cut and fell off the LOD.	Pending - Discussed safety hazards when tree cutting on 5/5/2018. Will be moved onto ROW during mechanical process.
NCR	E	6853+62	4/21/2018 – Tree cut half in and half outside of LOD.	Pending - Notified Land, MVP Office and FERC Monitor. Will be moved onto ROW during mechanical process.
NCR	E	6853+77	4/21/2018 – 9" tree cut 15" outside of LOD	Pending – Notified Land, MVP Office and FERC Monitor. Will be moved onto ROW during mechanical process.
NCR	E	6854+05	4/21/2018 – 4" tree cut 6" outside of LOD	Pending – Notified Land, MVP Office and FERC Monitor. Will be moved onto ROW during mechanical process.
FERC Communication Report	E	6968+00	4/30/18 - 24" diameter double heart tree fell off ROW	Pending – Discussed double hearted trees on 4/30/18. Will be moved onto ROW during mechanical process.

Compliance	Spread	Location	Description and Date	Correction and Date
FERC Communication Report	E	7018+20	4/30/18 -Wedge tree; when fell it rolled off ROW	Pending - Reviewed wedging procedures on 4/30/18. Will be moved onto ROW during mechanical process.
FERC Communication Report	E	7359+60	4/20/2018 – Tree fell outside of the LOD.	Pending- Notified land agent and FERC monitor. Will be moved onto ROW during mechanical process.
FERC Communication	E	7428+00 - 7429+00	5/15/2018 - Cherry tree fell off the ROW when being cut due to it being rotten in the center. Off ROW approximately 20'.	Pending - Will be moved onto ROW during mechanical process.
FERC Communication Report	E	7508+92	4/20/2018 – Tree fell outside of the LOD.	Pending- Notified land agent and FERC monitor. Will be moved onto ROW during mechanical process.
FERC Communication Report	E	7938+00	4/28/2018 - Cut tree (30") and fell off ROW after wedging failure/wind	Pending – Crew discussed wind gust and additional measures to aid in being aware of the wind changes on 4/28/18. Also, reviewed the process of wedging. Will be moved onto ROW during mechanical process.
FERC Communication	E	7938+08	5/10/2018 - 14" dead tree 12' tall rolled off the LOD when it hit the ground.	Pending - Went over distance to stay away from tree cutting and the dangers of steep grades and rolling trees on 5/10/2018. Will be moved onto ROW during mechanical process.
FERC Communication	E	7938+90	5/10/2018 - 20" tree 10' off LOD when cut	Pending - Went over tree felling procedures and LOD location markers on 5/10/2018. Will be moved onto ROW during mechanical process.

Compliance	Spread	Location	Description and Date	Correction and Date
FERC Communication Report	E	8070+00	5/1 /18- Hill very steep and 8" tree rolled off the ROW	Pending - Reviewed dangers as well as procedures for hand felling on steep grades on 5/1/18. Will be moved onto ROW during mechanical process.
FERC Communication Report	E	8081+13	5/4 /18- 18" tree was a high risk tree. As it was being pulled with rope it broke in two.	Pending – Reviewed roping high risk tree procedures and had a safety talk on 5/4/18. Will be moved onto ROW during mechanical process.
FERC Communication Report	E	8085+00	5/1/18- Hill very steep and 8" tree rolled off the ROW. JP calling Jeff to see about mechanical in the area.	Pending - Reviewed dangers as well as procedures for hand felling on steep grades on 5/1/18. Will be moved onto ROW during mechanical process.
FERC Communication	E	8124+55	5/11/2018 - 13" tree top off LOD before sawyers approached Once base was cut the top still remained off LOD 30' The tree is located off Cold Hollow Road on the south side of the LOD.	Pending - Reviewed location of tree top and dangers of hanging trees becoming widow makers as well as "sweeping" areas for dangers prior to cutting and walking the LOD on 5/11/2018. Will be moved onto ROW during mechanical process.
FERC Communication	E	8156+00	5/10/2018 - Wind picked up the 11" tree 30' long when it was cut.	Pending - Discussed safety hazards when winds gust come and monitoring winds speeds on 5/10/2018. Will be moved onto ROW during mechanical process.
FERC Communication	E	ATWS-273A	5/5/2018 - 18" Tree broke and pulled off the ROW off ATWS 273-A	Pending - Discussed the dangers of a tree splitting/breaking when cut on 5/5/2018. Will be moved onto ROW during mechanical process.

Compliance	Spread	Location	Description and Date	Correction and Date
FERC Communication	E	7860+00 to 7870+00 MVP-GB-188	5/20/2018 - Near the south end of AR 188 a tree top (7" towards the top) is about 20' off the LOD.	Pending - Will be moved onto ROW during mechanical process.
FERC Communication	E	7820+00 to 7840+00 MVP-GB-187.03	5/20/2018 - One tree leaning off the Row. The second tree is partially off a few feet.	Pending - Will be moved onto ROW during mechanical process.
FERC Communication	E	7820+00 to 7840+00 MVP-GB-187.03	5/20/2018 - The second tree is partially off a few feet.	Pending - Will be moved onto ROW during mechanical process.
FERC Communication	E	7060+00	5/26/2018 - Tree top rolled out of the LOD about 20 feet.	Pending - Will be moved onto ROW during mechanical process.
FERC Communication	E	7061+30	5/26/2018 - Tree top rolled out of the LOD about 35-40 feet.	Pending - Will be moved onto ROW during mechanical process.
PAR	F	9350+00 to 10090+60 (MP 177-191)	A total of 567 trees rolled out of LOD. From beginning of hand felling on 2/27 until 4/1.	Pending - Contacted all land owners and began removing trees during clearing. No ground disturbance off ROW. Remaining trees will be moved onto ROW and cleared during mechanical process. 5/18/2018 – Trees located between St 9658+59 to 9380+00 have been resolved.

Compliance	Spread	Location	Description and Date	Correction and Date
PAR	F	9258+75	6/9/2018 - Off setting ditch stakes off LOD.	6/10/2018 - Removed stakes.
PAR	F	9736+49 to 9793+36	6/12/2018 - No ECD's behind processing crew.	6/13/2018 - Installed ECD's.
PAR	F	9126+50	6/15/2018 - Install silt fence to close off bridge in front of stream.	6/16/2018 - Installed ECD's.
PAR	F	9126+50	6/15/2018 - Silt fence knocked over by falling rocks.	6/16/2018 - Remove rocks and repair silt fence.
PAR	F	9126+50	6/15/2018 - Rocks falling down the hillside.	6/19/2018 - Retrieved rock and installed ECD's to prevent from happening again.
NCR	G	11950+00	6/12/2018 - Sediment left ROW and entered shallow sink.	6/18/2018 - A variance was received to allow equipment off ROW to recover sediment from a sink. Work was completed on 6/18.

Compliance	Spread	Location	Description and Date	Correction and Date
PAR	G	11954+00	6/11/2018 - Sediment left ROW due to overwhelmed erosion control devices.	6/12/2018 - Sediment was recovered and area seeded and mulched. Several water bars were re-installed to discharge to opposite side of the ROW.
NCR	G	10592+72	6/13/2018 - Stream bank was excavated at S-S5 while installing rail car bridge.	6/13/2018 - Stream bank was restored and stabilized.
PAR	G	11687+42	6/11/2018 - Sediment in stream buffer and evidence entered stream at S-MN 21 through sediment controls.	6/11/2018 - Sediment recovered from buffer and area stabilized with much. Sediment controls repaired.
PAR	G	11744+55 - 11750+00	6/11/2018 - Sediment left ROW through overwhelmed erosion controls in upland area.	6/12/2018 - Sediment was recovered and area seeded and mulched.
NCR	H	12031+51	6/11/2018 - Improper slope breaker installation contributed to ECD failure and sediment impacting the stream.	6/11/2018 - Sediment removed from stream and ECD's repaired. Due to saturated right of way conditions slope breakers were installed on 6/13. The slope breakers were reshaped and compacted. Straw bales installed as velocity checks down the perimeter controls.

Compliance	Spread	Location	Description and Date	Correction and Date
NCR	H	13061+89	6/11/2018 - Improper slope breaker installation contributed to ECD failure and sediment impacting the stream.	6/11/2018 - Sediment removed from stream and ECD's repaired. Due to saturated right of way conditions slope breakers were installed on 6/13. The slope breakers were reshaped and compacted. Straw bales installed as velocity checks down the perimeter controls.
NCR	H	13062+96	6/11/2018 - Improper slope breaker installation contributed to ECD failure and sediment impacting the stream.	6/11/2018 - Sediment removed from stream and ECD's repaired. Due to saturated right of way conditions slope breakers were installed on 6/13. The slope breakers were reshaped and compacted. Straw bales installed as velocity checks down the perimeter controls.
NCR	H	13042+58	6/11/2018 - Improper slope breaker installation contributed to ECD failure and sediment impacting the S-H1 stream.	6/11/2018 - Sediment removed from stream and ECD's repaired. Due to saturated right of way conditions slope breakers were installed on 6/13. The slope breakers were reshaped and compacted. Straw bales installed as velocity checks down the perimeter controls.
PAR	H	13197+55	6/11/2018 - Priority 1 silt fence BMP failed due to rain event sending sediment out into the roadway.	6/11/2018 - Sediment removed from roadway, additional ECD's installed, area seeded and mulched for temporary stabilization purposes.

Compliance	Spread	Location	Description and Date	Correction and Date
PAR	H	13042+58	6/13/2018 - During force assisted excavation activities spoil was loosened and slid down the slope crushing super silt fence ECD and material entered S-H1 stream.	6/13/2018 - Material removed from stream, stream bank stabilized with erosion control blanket, super silt fence replaced. Corrective action will consist of moving force assisted excavation activities further back from streams in the future.
PAR	JNF	11567+42	6/13/2018 - Side boards on the temporary bridge crossing at the S-PP22 were in need of maintenance.	6/14/2018 - The contractor's environmental crew made the necessary repairs on 06/14.
Note: PAR – Problem Area Report; NCR – Noncompliance Report.				

APPENDIX C

AGENCY CORRESPONDENCE AND RESPONSES

Spread F

On May 9, 2018 the West Virginia Department of Environmental Protection (WVDEP) issued a Notice of Violation (NOV) to inspected locations along Spread F, between Stations 9498.53 to 10106+00. The NOV addressed erosion sediment control failures in violation of the MV/NPDES General Water Pollution Control Permit No. WV0116815. MVP responded on June 7, 2018 addressing those concerns. WVDEP responded on June 11, 2018 confirming MVP's reply as an acceptable NOV response. A copy of WVDEP's response is attached.

Elizondo, Manuela

From: Pitsenbarger, Christy E <Christy.E.Pitsenbarger@wv.gov>
Sent: Monday, June 11, 2018 5:58 AM
To: Hoover, Matthew S.
Subject: [EXTERNAL] RE: Mountain Valley Pipeline Response to W18-52-001-CP

Thank you for the response. This will be placed in our files as an acceptable NOV response.

From: Hoover, Matthew S. [mailto:MHoover@eqt.com]
Sent: Thursday, June 07, 2018 2:22 PM
To: Pitsenbarger, Christy E <Christy.E.Pitsenbarger@wv.gov>
Subject: Mountain Valley Pipeline Response to W18-52-001-CP

Hi Christy,
Please see the attached response to the NOV that was received on May 31.

If you have any questions or need additional clarification, please don't hesitate to contact me.

Hope all is well.

Thanks,

Matt Hoover
Sr. Environmental Coordinator
2200 Energy Drive, 2nd Floor
Canonsburg, PA 15317
Office: (724) 873-3009
Cell: (412) 258-5627

To learn about EQT's sustainability efforts visit: <https://csr.eqt.com>

APPENDIX D
LANDOWNER CONCERNS

The following table includes information regarding landowner concerns and how they were resolved.

Tract ID	Spread / Facility	Station/ MP	Date of Concern	Date of Resolution	Issue and Resolution
VA-MO-025	Spread H	237.3	3/20/2018	Pending	<p>Issue: Survey was approached by L/O stating that the property lines were incorrect in the maps. The L/O said that the lines were off about 100' and the neighbors have not been compensated.</p> <p>Resolution: MVP is currently reviewing the property boundary information to determine if the claim is accurate.</p> <ul style="list-style-type: none"> • 4/15/2018 - Agent met with VA-MO-025 L/O along with L/Os of VA-MN-5233 and VA-RO-5805. The stakes were reviewed that the L/O was referring to and walked the route L/O preferred. These stakes were from a previous survey and do not reflect the filed route. The filed route does appear to enter VA-RO-5805 and VA-RO-5806. If the L/O's preferred route is accepted, it will require signatures from VA-MO-025 and VA-MO-023. Further discussions will proceed through both L/O's attorneys. • 4/20/2018 - MVP is currently working with the L/O to identify potential alternatives to the route in the area of concern. • 4/27/2018 - Land and construction have met with the L/O and the adjacent L/O to correct the route and are meeting with the adjacent L/O's to acquire rights. • 5/4/2018 - Still working with L/Os and reviewing alternatives. • 5/11/2018 - Still have an issue with the route. One neighbor has signed to fix part of the issue, but the other neighbor, documents are still in process. • 5/18/2018 - Still processing documents. • 5/25/2018 - the route has been corrected but this is still being negotiated • 6/8/2018 - Still being negotiated. • 6/15/2018 - MVP is coordinating with the attorney to come to an agreement.

VA-RO-045	Spread H	241.6	5/7/2018	Pending	<p>Issue: Cut trees are blocking L/O access road.</p> <p>Resolution: The trees need to be cleared from the access road. 5/18/2018- checking to see if this was completed. 6/8/2018- No further update.</p> <p>6/15/2018- Construction will clear the road with mechanical equipment.</p>
VA-FR-017.17	Spread H	254.6	5/24/2018	Pending	<p>Issue: Land Agent received a call from the L/O stating that with the rain in the Cahas Mountain area, the pond by their home is now a mud pond. They said it is due to the tree clearing up the hill from their house. They also said that the mud has killed the fish in the pond they had stocked with trout, catfish and crappie. The L/O added that the pond does turn cloudy with heavy rain, but not mud. They are asking to pay for the sediment removal and to restock the fish.</p> <p>Resolution: The L/O called and got two estimates. It would be \$1,100 for the silt removal and \$500 for the fish. The total compensation will be \$1,600. The L/O has the water clause in his LOW for his drinking water, but the pond is not his drinking water source.</p> <p>6/8/2018- Still negotiating the sediment removal and fish restocking.</p> <p>6/15/2018- Land agent is still negotiating with the L/O.</p>
VA-MO-057	Spread G	227.3	6/1/2018	Pending	<p>Issue: Rocks slid off the ROW 100' to 150' down the slope.</p> <p>Resolution: EI, Land and FERC are working on a plan to either retrieve the rock or compensate the L/O. 6/8/2018- No further update.</p> <p>6/15/2018- Agent met with the L/O and could not travel to the affected area due to construction clearing/grading nearby. Agent will return in a couple days to review.</p>
VA-FR-017.33	Spread I	256.8	6/4/2018	Pending	<p>Issue: L/O is upset about the fact that the openings in the silt fence have not been put in so they can access both sides of the property. The L/O's timber has also been covered up with dirt and cannot be used.</p> <p>Resolution: Construction is working on a solution to this issue</p>

APPENDIX E**VARIANCE APPROVAL CONDITIONS****Variance No. Bradshaw-1**

On March 21, 2018, Mountain Valley filed Variance Request No. Bradshaw-1 to conduct 24-hour construction at its Bradshaw Compressor Station site in Wetzel County, West Virginia through May 31, 2018. On May 2, 2018, Mountain Valley supplemented its variance request to perform 24-hour construction at the Bradshaw Compressor Station through June 30, 2018. The Commission issued an order granting the variance request on May 3, 2018. In its letter order, the Commission stipulated that Mountain Valley will stop night work if measured noise levels exceed the predicted criteria.

Mountain Valley performed a noise study at locations close to NSAs 3 and 4. The study documented ambient noise data at the two identified NSAs starting on May 8, 2018 and continuing through June 14, 2018. In summary, sound levels measured after the start of nighttime construction activities on June 1, 2018 indicate that nighttime sound levels during construction are lower than 48.6 dBA and that there has been no measured increase in nighttime sound levels due to construction activities. A copy of the noise monitoring report through June 14, 2018 is attached.

June 18, 2018



To: Mr. Matthew B. Johnson, P.E.
Engineer III, MVP Compression Design
EQT Corporation
EQT Plaza
625 Liberty Avenue
Pittsburgh, PA 15222
Office: 304-627-6423
Cell: 304-543-7569
MJohnson@eqt.com

Re: Nighttime Construction Noise Monitoring
Bradshaw Compressor Station
Wetzel County, West Virginia

TECHNICAL MEMORANDUM

This Technical Memorandum addresses the work being performed by SLR International Corporation for EQT at the MVP Bradshaw Compressor Station in Wetzel County, West Virginia. The sound levels during nighttime construction have been measured and compared to the sound levels before construction began. The data indicates that nighttime sound levels during construction are lower than 48.6 dBA and that there has been no significant change in nighttime sound level due to the construction activities.

ENVIRONMENTAL NOISE STUDY

General

Sound level measurements were taken at locations close to the nearest Noise Sensitive Areas (NSAs) to the project site between May 8, 2018 and June 14, 2018. No nighttime construction activities were taking place before June 1st, so measurements from May 8th to May 31st have been used to characterize the nighttime ambient sound levels at the NSAs. Nighttime construction started on the night of June 1st. Measurements on that night and after have been used to characterize the sound levels during nighttime construction activities.

Measurement Locations

Long-term sound levels were measured at locations close to the two nearest NSAs to the station site. NSA 3 represents the house located at 2680 Fallen Timber Road and is the nearest NSA to the west of the construction site. NSA 4 represents the house located at 1371 Buck Run Road and is the nearest NSA to the southeast of the construction site. An aerial photo (**Figure 1**) showing the project site and measurement locations is attached.

Measurement Instrumentation

Two Larson Davis Model 831C Type 1 sound level meters were used to continuously monitor the sound levels (serial number 10403 and 10416) during the monitoring period. Each meter recorded 1/3-octave band and full-octave band sound levels as well as statistical parameters. Data was based on 15-minute sound level averages with 10-second sampling periods. The meters hold calibration certification traceable to NIST standards. Microphone windscreens were used for all measurements.

CRITERIA

Several different sound level metrics have been presented in the results, as construction noise is expected to be a minor contributor to the sound levels at the NSAs. The nighttime equivalent sound level, L_{eq} , is the most commonly used metric for evaluating sound levels. However, due to the presence of significant and time-varying (non-construction) environmental noise sources in this area, it is possible that the future nighttime L_{eq} values at the NSAs will be strongly affected or even dominated by non-construction sources, and thus some analysis efforts will be required to fairly evaluate the construction contributions. Simple comparison of before-and-after sound levels may not account for the actual construction contributions.

As per the latest FERC guidance (FERC 2017), “Construction activity that would or may occur during nighttime hours should be performed with the goal that the activity contributes noise levels below 55 dBA L_{dn} and 48.6 dBA L_{eq} , or no more than 10 dBA over background if ambient noise levels are above 55 dBA L_{dn} .” The ambient sound levels in the area were measured during the pre-construction noise study, with results of 42.6 and 44.1 dBA L_{dn} at NSAs 3 and 4, respectively. These levels are well below 55 dBA L_{dn} , so the 48.6 dBA L_{eq} targets for construction noise would apply at the NSAs.

In addition to the 48.6 dBA L_{eq} nighttime sound level targets, the nighttime construction noise will also be compared to the existing nighttime ambient sound levels with the goal of limiting the short term nighttime construction sound level impact to less than three decibels.

The FERC considers nighttime to extend from 10:00 pm until 7:00 am the following morning. In this report, nighttime periods are dated based on the start time, so the night period for May 25th extends from 10:00 pm on May 25th until 7:00 am on May 26th.

MEASUREMENT RESULTS

Ten second sound level samples were continuously recorded at each NSA during the measurement period. These samples were then used to calculate the nighttime average sound level (L_{eq}) and several statistical parameters: the L_{10} , L_{50} , and L_{90} . The L_{10} , L_{50} , and L_{90} are the sound levels that are exceeded 10, 50, and 90 percent of the measurement time interval, respectively. These statistical parameters are helpful in evaluating the range and type of sound levels in an area. For instance, the L_{90} is often used to characterize the background or ambient sound level, since it tends to filter out short-term sounds. The results for NSA 3 are presented in **Table 1**, while the results for NSA 4 are presented in **Table 2**.

Table 1 – Nighttime Sound Level Measurement Results – NSA 3

Measurement Location	Measurement Date	Nighttime Sound Levels (dBA)			
		L _{eq}	L ₁₀	L ₅₀	L ₉₀
NSA 3 - No Nighttime Construction	8-May-18	39.7	43.2	36.2	35.4
	9-May-18	57.5	45.6	32.8	31.5
	11-May-18	37.8	41.9	26.9	26.3
	12-May-18	50.8	48.4	41.3	24.2
	13-May-18	41.8	44.9	32.5	31.7
	14-May-18	40.5	43.7	32.0	31.0
	15-May-18	48.7	53.4	41.2	40.0
	16-May-18	40.7	43.7	36.5	35.7
	17-May-18	38.7	43.0	31.7	29.9
	18-May-18	38.2	41.7	31.5	28.6
	19-May-18	43.6	44.3	39.8	38.7
	20-May-18	42.0	42.5	30.5	29.9
	21-May-18	52.1	52.4	34.1	29.7
	22-May-18	46.8	48.3	41.4	40.2
	23-May-18	38.6	42.0	34.6	34.1
	24-May-18	37.4	42.6	28.0	27.6
	25-May-18	36.1	41.6	24.3	23.2
	26-May-18	55.8	54.1	49.3	38.2
	27-May-18	41.9	43.9	39.7	39.0
	28-May-18	39.1	44.6	31.8	31.2
	29-May-18	39.9	44.4	29.1	28.0
	30-May-18	40.7	43.2	28.6	25.0
	31-May-18	38.5	43.5	31.9	29.8
NSA 3 - With Nighttime Construction	1-Jun-18	38.8	44.7	30.1	27.9
	2-Jun-18	39.4	44.1	29.8	26.1
	3-Jun-18	38.9	43.2	31.7	27.5
	4-Jun-18	39.0	42.1	36.2	32.5
	5-Jun-18	38.6	41.8	29.9	26.4
	6-Jun-18	38.8	42.5	22.6	19.3
	7-Jun-18	38.4	43.3	24.3	21.5
	8-Jun-18	38.3	43.4	26.1	22.0
	9-Jun-18	37.6	42.2	24.4	20.0
	10-Jun-18	50.3	48.3	23.4	21.1
	11-Jun-18	38.5	43.7	29.3	23.9

Measurement Location	Measurement Date	Nighttime Sound Levels (dBA)			
		L _{eq}	L ₁₀	L ₅₀	L ₉₀
	12-Jun-18	56.8	62.2	50.0	22.5
	13-Jun-18	40.3	43.9	37.6	34.5
	14-Jun-18	37.9	41.5	33.3	26.3

Table 2 – Nighttime Sound Level Measurement Results – NSA 4

Measurement Location	Measurement Date	Nighttime Sound Levels (dBA)			
		L _{eq}	L ₁₀	L ₅₀	L ₉₀
NSA 4 - No Nighttime Construction	8-May-18	42.2	44.7	37.7	37.1
	9-May-18	58.0	48.9	35.1	34.9
	11-May-18	47.1	44.8	34.3	32.9
	12-May-18	52.0	52.3	42.5	31.5
	13-May-18	45.8	48.2	35.8	35.3
	14-May-18	44.5	48.3	36.2	35.1
	15-May-18	50.2	55.3	42.9	41.3
	16-May-18	45.4	48.7	37.8	37.5
	17-May-18	44.9	50.0	35.9	35.2
	18-May-18	44.6	44.3	34.4	33.1
	19-May-18	43.2	44.9	36.7	35.7
	20-May-18	43.6	44.7	32.3	32.0
	21-May-18	50.4	50.1	34.1	32.7
	22-May-18	46.9	50.5	40.5	38.9
	23-May-18	44.5	47.1	35.9	35.7
	24-May-18	41.5	44.7	32.6	32.2
	25-May-18	41.4	42.3	31.5	30.7
	26-May-18	53.1	53.7	48.2	38.3
	27-May-18	42.5	45.7	38.6	37.7
	28-May-18	39.9	44.2	33.3	32.6
	29-May-18	43.9	47.7	30.8	30.1
	30-May-18	43.4	45.7	35.6	30.4
	31-May-18	40.4	44.7	32.3	30.1
NSA 4 - With Nighttime Construction	1-Jun-18	41.4	46.2	34.8	30.8
	2-Jun-18	38.6	41.9	31.6	27.6
	3-Jun-18	41.1	45.4	33.7	31.6
	4-Jun-18	38.9	41.9	31.1	28.5
	5-Jun-18	37.8	41.4	30.6	26.1
	6-Jun-18	37.9	41.8	27.1	21.5
	7-Jun-18	39.9	42.3	28.6	23.3
	8-Jun-18	44.0	46.5	34.6	25.6
	9-Jun-18	44.6	48.1	34.6	23.9
	10-Jun-18	50.0	49.4	38.6	28.7

Measurement Location	Measurement Date	Nighttime Sound Levels (dBA)			
		L _{eq}	L ₁₀	L ₅₀	L ₉₀
	11-Jun-18	43.5	46.9	30.5	24.8
	12-Jun-18	56.5	61.9	49.2	36.7
	13-Jun-18	45.4	48.0	43.9	37.9
	14-Jun-18	41.9	43.9	33.0	26.7

There were instances of brief periods of rain and thunder on several nights of the measurement period. Due to noise from rain and thunder, the nighttime L_{eq} for these days will be higher than the other nighttime periods at both NSAs. Periods with rain are indicated with a bold L_{eq} in **Tables 1 and 2**.

The sound levels for the nighttime construction period are consistently similar to, or lower than, the sound levels measured during the ambient measurement period, across all measurement metrics. This indicates that the sound levels at the NSAs are controlled by non-construction related environmental sources, such as wind, rain, and flowing water in nearby creeks, even during construction activities.

The measured post-construction nighttime sound levels at NSAs 3 and 4 are all below 48.6 dBA L_{eq} for those nights without rain and thunder, and there is no measured increase in the nighttime sound levels due to the construction activities. The construction activities at the station are in full compliance with all FERC guidance on construction nighttime sound levels.

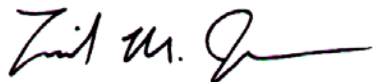
CONCLUSION

Sound level measurements were taken at locations close to NSAs 3 and 4 starting on May 8, 2018 and continuing through June 14, 2018 at the Bradshaw Compressor Station located in Wetzell County, West Virginia. Sound levels measured after the start of nighttime construction activities on June 1st demonstrate that construction contributes less than 48.6 dBA L_{eq} at both NSAs, and that there is no significant increase in the nighttime sound levels due to construction activities.

This concludes this Technical Memorandum. Please contact us if you have any questions.

Sincerely,

SLR International Corporation



David M. Jones, P.E., INCE Bd. Cert.
Principal Engineer

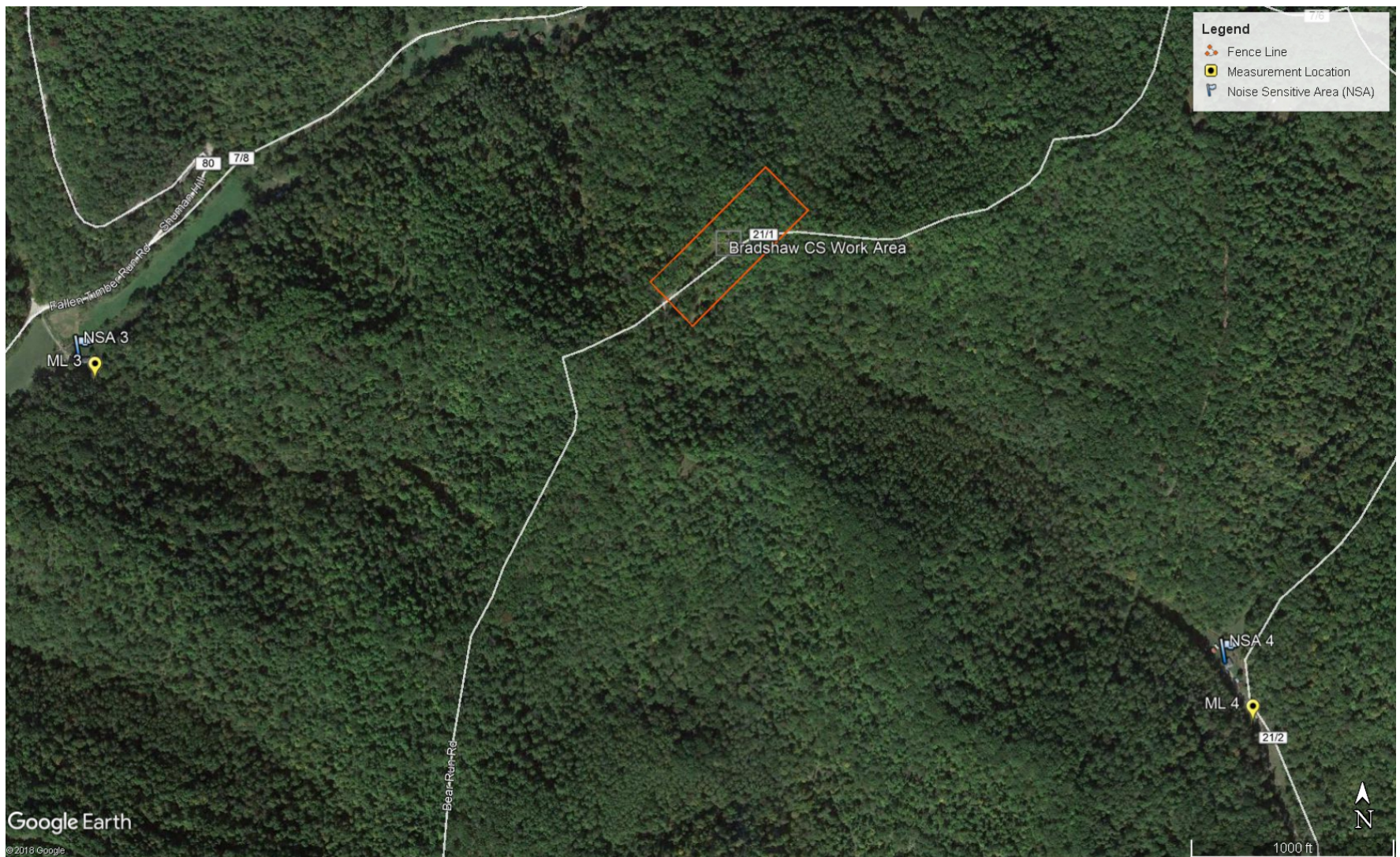


Figure 1: Measurement Locations