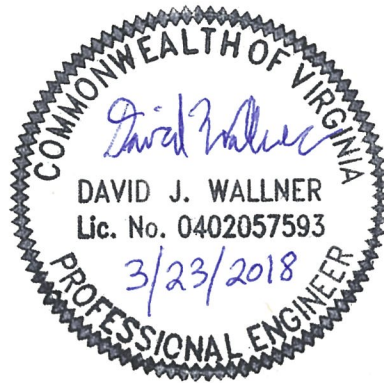
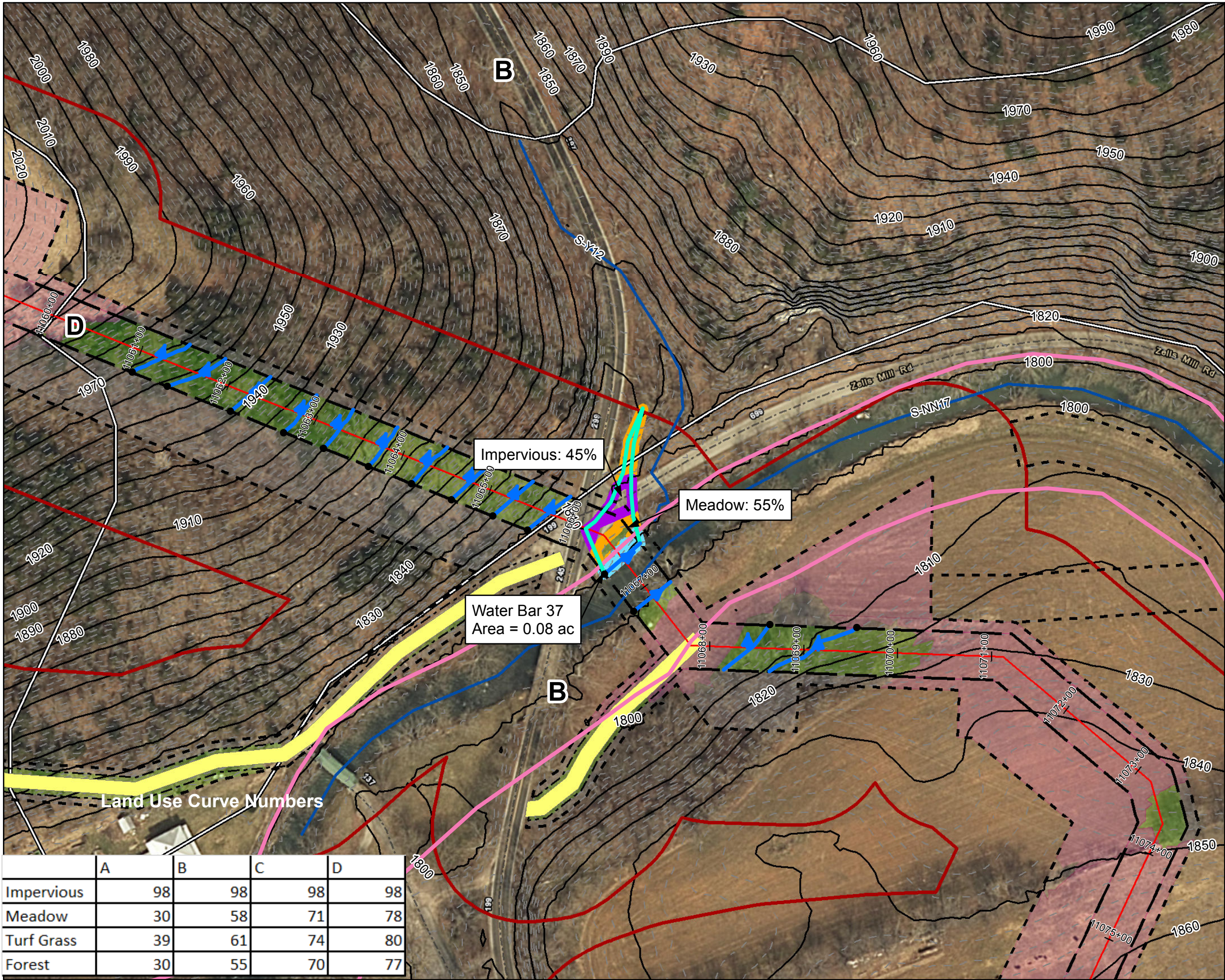


By virtue of this seal and signature, all supporting documents included in this package are accurate and support the design presented herein.





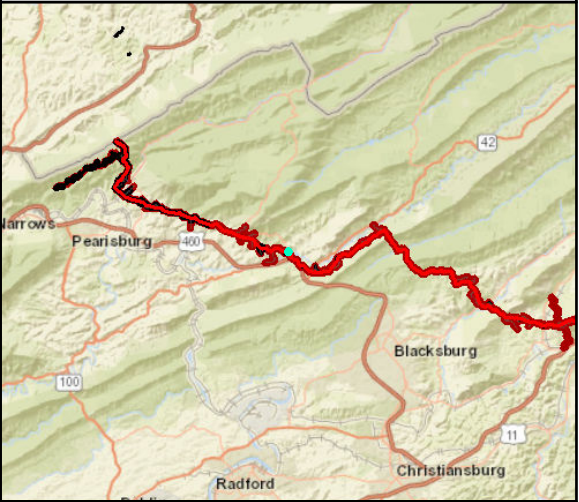
Legend

- Approximate Location of Water Bar End Treatment
- Permanent Water Bar 10-ft End Treatment
- Permanent Water Bar 15-ft End Treatment
- Permanent Water Bar 20-ft End Treatment
- Sheetflow
- Shallow Concentrated Flow
- Streams
- Stationing
- Alignment Centerline
- Permanent Easement
- Limit of Disturbance
- MLV Site
- Access Road Permanent Easement
- Existing Impervious Surveyed Road Edge
- New/Proposed Impervious Road Edge
- Water Bar Drainage Area
- 100-year Floodplain
- Pond
- Wetland
- Hydrologic Soil Groups
- 100 ft Buffer off of Limits of Disturbance
- Agricultural
- Forest
- Impervious
- Meadow
- Turf/Grass
- Open Water
- Agricultural
- Barren
- Brush
- Meadow
- 10-foot Contour
- 2-foot Contour

NAD 1983 UTM 17N (feet)

1 in = 100 feet

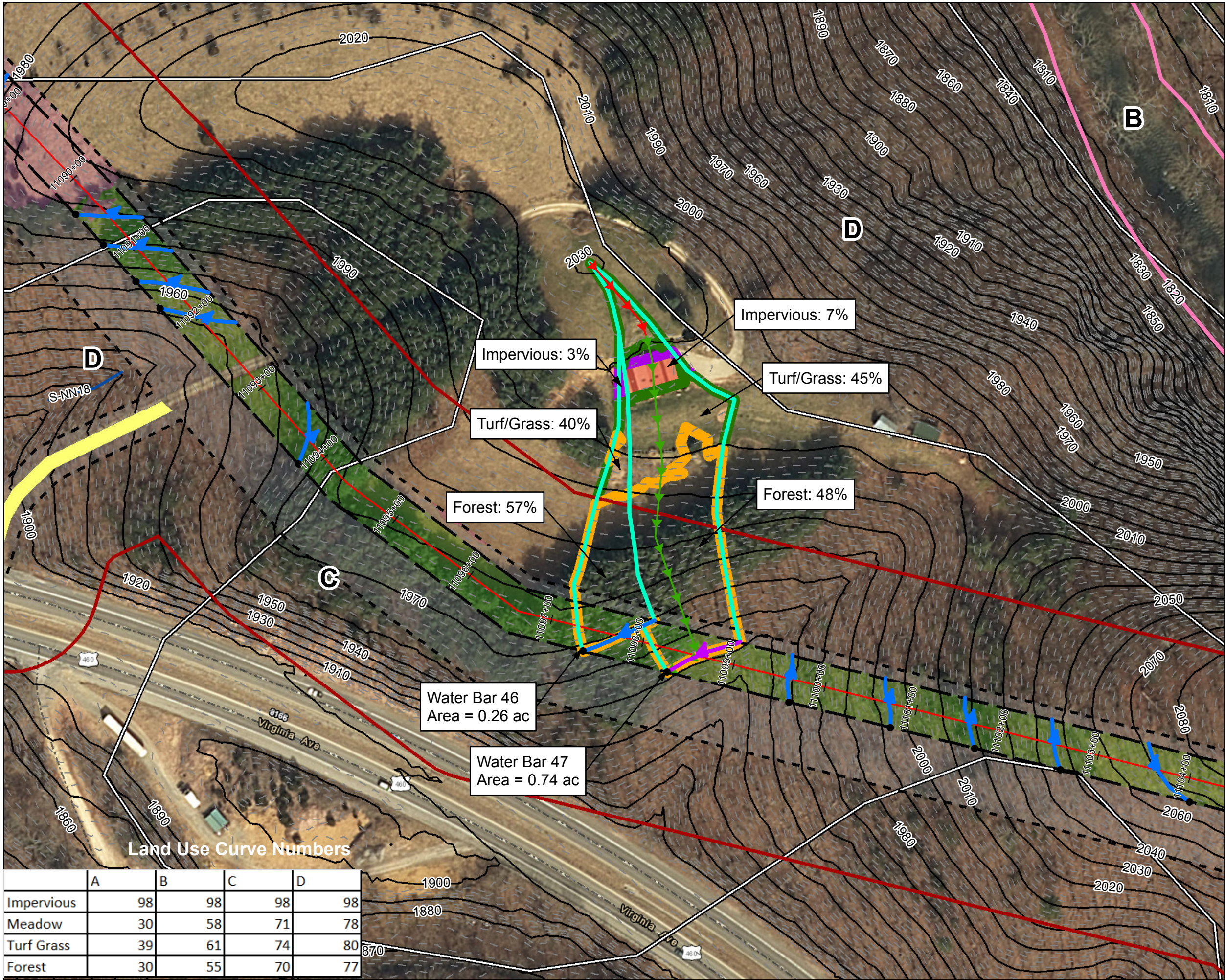
100 50 0 100 Feet



Mountain Valley Pipeline Project**Stormwater Drainage Exhibits**
Water Bar 37
Spread 9
Figure 001
Giles County, Virginia
March, 2018

Data Sources: Imagery from ESRI Streaming Data 2014, Delineated streams surveyed by Tetra Tech Inc. 2014 to 2017, Transportation data from VITA map layer 2016, Elevation data derived from LIDAR provided by EQT 2016, Soils from NRCS Gridded Soil Survey Geographic (SSURGO) database 2014, Land Use digitized from ESRI World Imagery 2015, Agricultural Area from National Land Cover Dataset 2011.

	A	B	C	D
Impervious	98	98	98	98
Meadow	30	58	71	78
Turf Grass	39	61	74	80
Forest	30	55	70	77



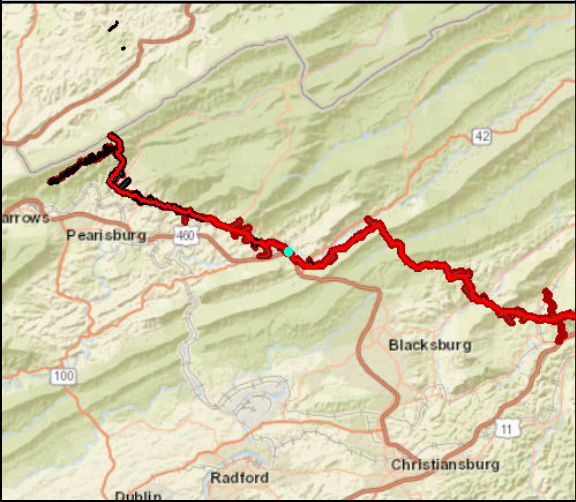
Legend

- Approximate Location of Water Bar End Treatment
- Permanent Water Bar 10-ft End Treatment
- Permanent Water Bar 15-ft End Treatment
- Permanent Water Bar 20-ft End Treatment
- Sheetflow
- Shallow Concentrated Flow
- Streams
- Stationing
- Alignment Centerline
- Permanent Easement
- Limit of Disturbance
- MLV Site
- Access Road Permanent Easement
- Existing Impervious Surveyed Road Edge
- New/Proposed Impervious Road Edge
- Water Bar Drainage Area
- 100-year Floodplain
- Pond
- Wetland
- Hydrologic Soil Groups
- 100 ft Buffer off of Limits of Disturbance
- Agricultural
- Forest
- Impervious
- Meadow
- Turf/Grass
- Open Water
- Agricultural
- Barren
- Brush
- Meadow
- 10-foot Contour
- 2-foot Contour

NAD 1983 UTM 17N (feet)

1 in = 100 feet

100 50 0 100 Feet



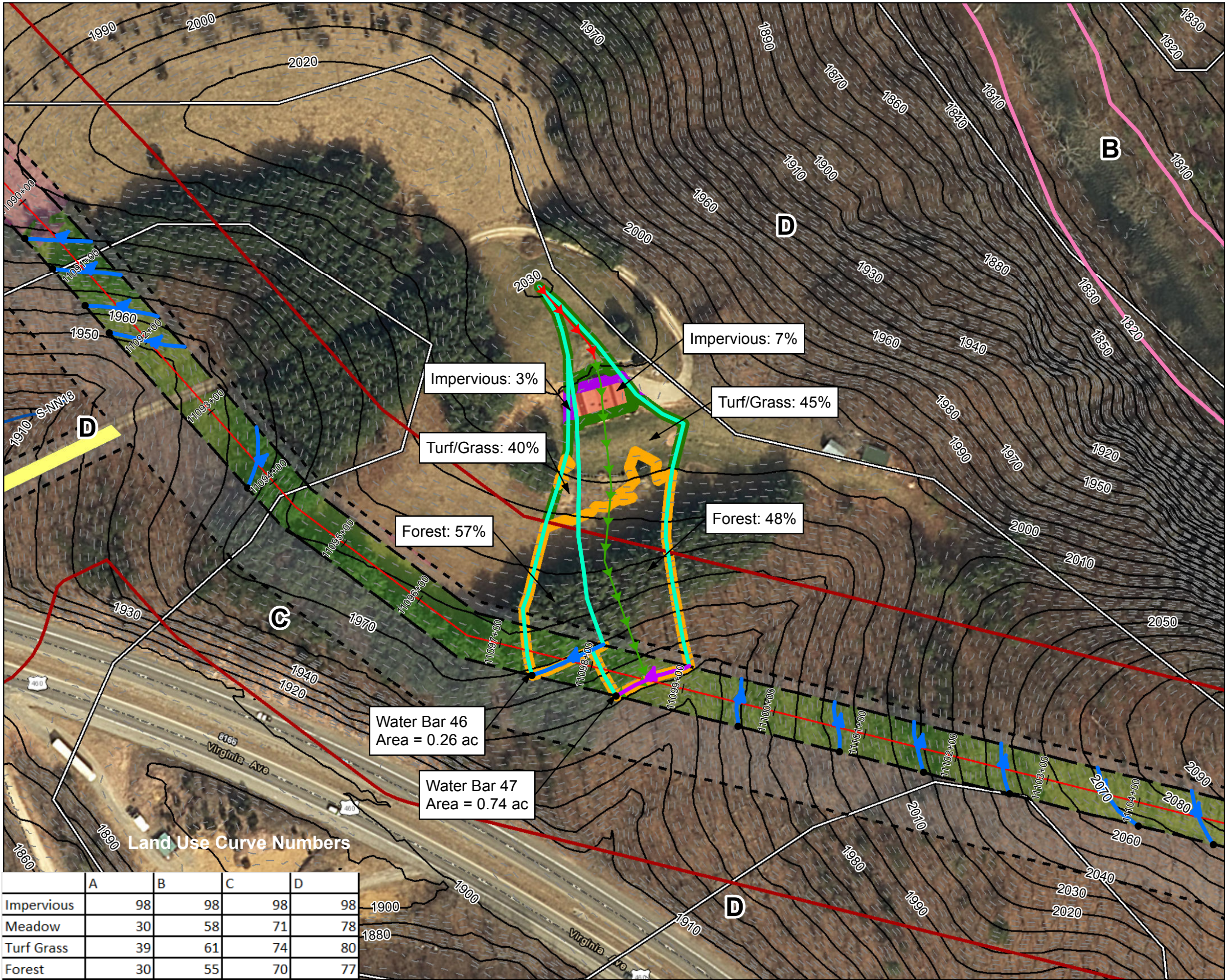
Mountain Valley Pipeline Project

Mountain Valley
PIPELINE

Stormwater Drainage Exhibits
Water Bar 46
Spread 9
Figure 002
Giles County, Virginia

March, 2018

Data Sources: Imagery from ESRI Streaming Data 2014, Delineated streams surveyed by Tetra Tech Inc. 2014 to 2017, Transportation data from VITA map layer 2016, Elevation data derived from LIDAR provided by EQT 2016, Soils from NRCS Gridded Soil Survey Geographic (SSURGO) database 2014, Land Use digitized from ESRI World Imagery 2015, Agricultural Area from National Land Cover Dataset 2011.



Legend

- Approximate Location of Water Bar End Treatment
- Permanent Water Bar 10-ft End Treatment
- Permanent Water Bar 15-ft End Treatment
- Permanent Water Bar 20-ft End Treatment
- Sheetflow
- Shallow Concentrated Flow
- Streams
- Stationing
- Alignment Centerline
- Permanent Easement
- Limit of Disturbance
- MLV Site
- Access Road Permanent Easement
- Existing Impervious
- Surveyed Road Edge
- New/Proposed Impervious Road Edge
- Water Bar Drainage Area
- 100-year Floodplain
- Pond
- Wetland
- Hydrologic Soil Groups
- 100 ft Buffer off of Limits of Disturbance
- Agricultural
- Forest
- Impervious
- Meadow
- Turf/Grass
- Open Water
- Agricultural
- Barren
- Brush
- Meadow
- 10-foot Contour
- 2-foot Contour

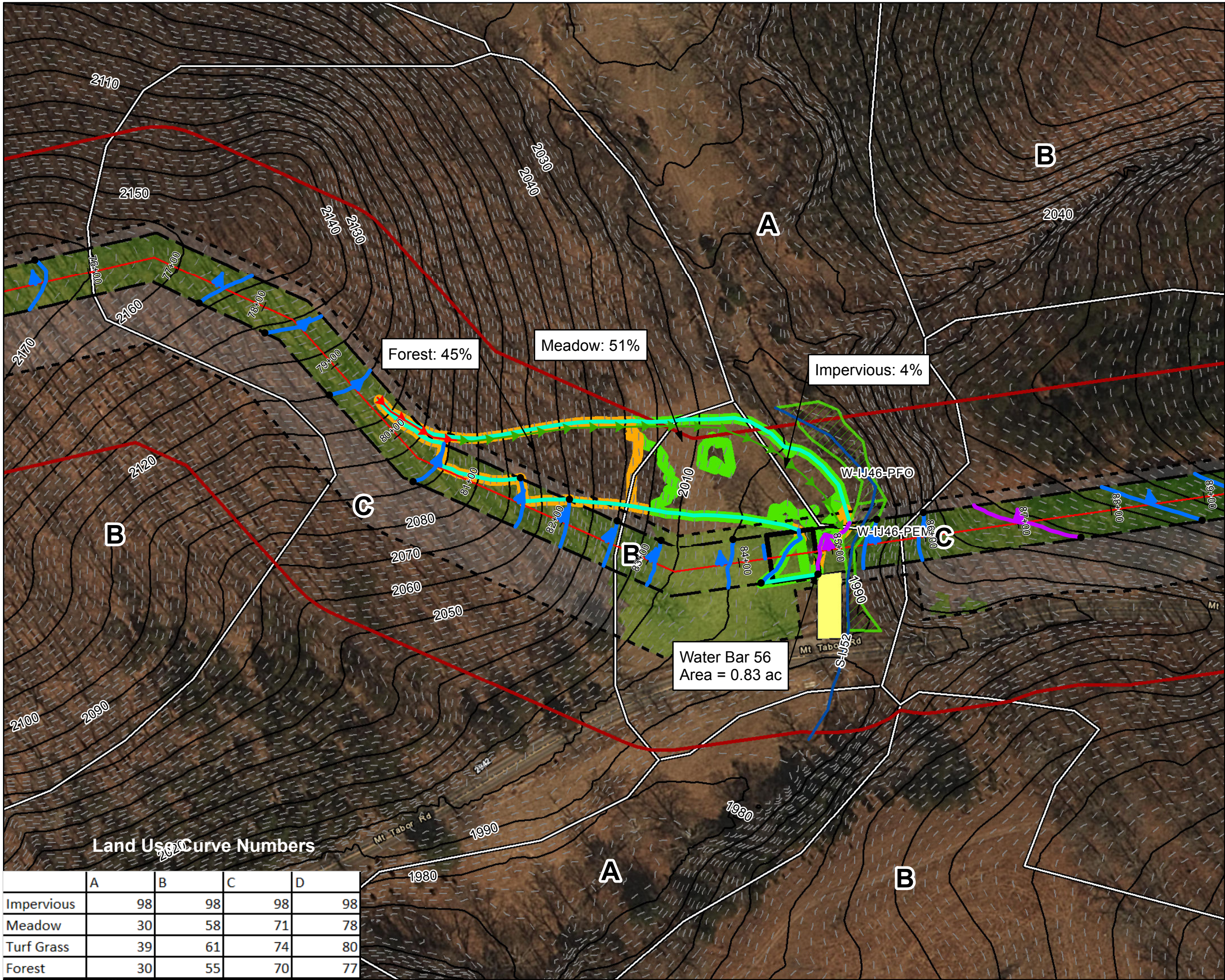
NAD 1983 UTM 17N (feet)

1 in = 100 feet

Mountain Valley Pipeline Project

Stormwater Drainage Exhibits
Water Bar 47
Spread 9
Figure 003
Giles County, Virginia
March, 2018

Data Sources: Imagery from ESRI Streaming Data 2014, Delineated streams surveyed by Tetra Tech Inc. 2014 to 2017, Transportation data from VITA map layer 2016, Elevation data derived from LIDAR provided by EQT 2016, Soils from NRCS Gridded Soil Survey Geographic (SSURGO) database 2014, Land Use digitized from ESRI World Imagery 2015, Agricultural Area from National Land Cover Dataset 2011.



Legend

- Approximate Location of Water Bar End Treatment
- Permanent Water Bar 10-ft End Treatment
- Permanent Water Bar 15-ft End Treatment
- Permanent Water Bar 20-ft End Treatment
- Sheetflow
- Shallow Concentrated Flow
- Streams
- Stationing
- Alignment Centerline
- Permanent Easement
- Limit of Disturbance
- MLV Site
- Access Road Permanent Easement
- Existing Impervious Surveyed Road Edge
- New/Proposed Impervious Road Edge
- Water Bar Drainage Area
- 100-year Floodplain
- Pond
- Wetland
- Hydrologic Soil Groups
- 100 ft Buffer off of Limits of Disturbance
- Agricultural
- Forest
- Impervious
- Meadow
- Turf/Grass
- Open Water
- Agricultural
- Barren
- Brush
- Meadow
- 10-foot Contour
- 2-foot Contour

NAD 1983 UTM 17N (feet)

1 in = 100 feet

100 50 0 100 Feet

Mountain Valley Pipeline Project

Mountain Valley PIPELINE

Stormwater Drainage Exhibits

Water Bar 56

Spread 9

Figure 004

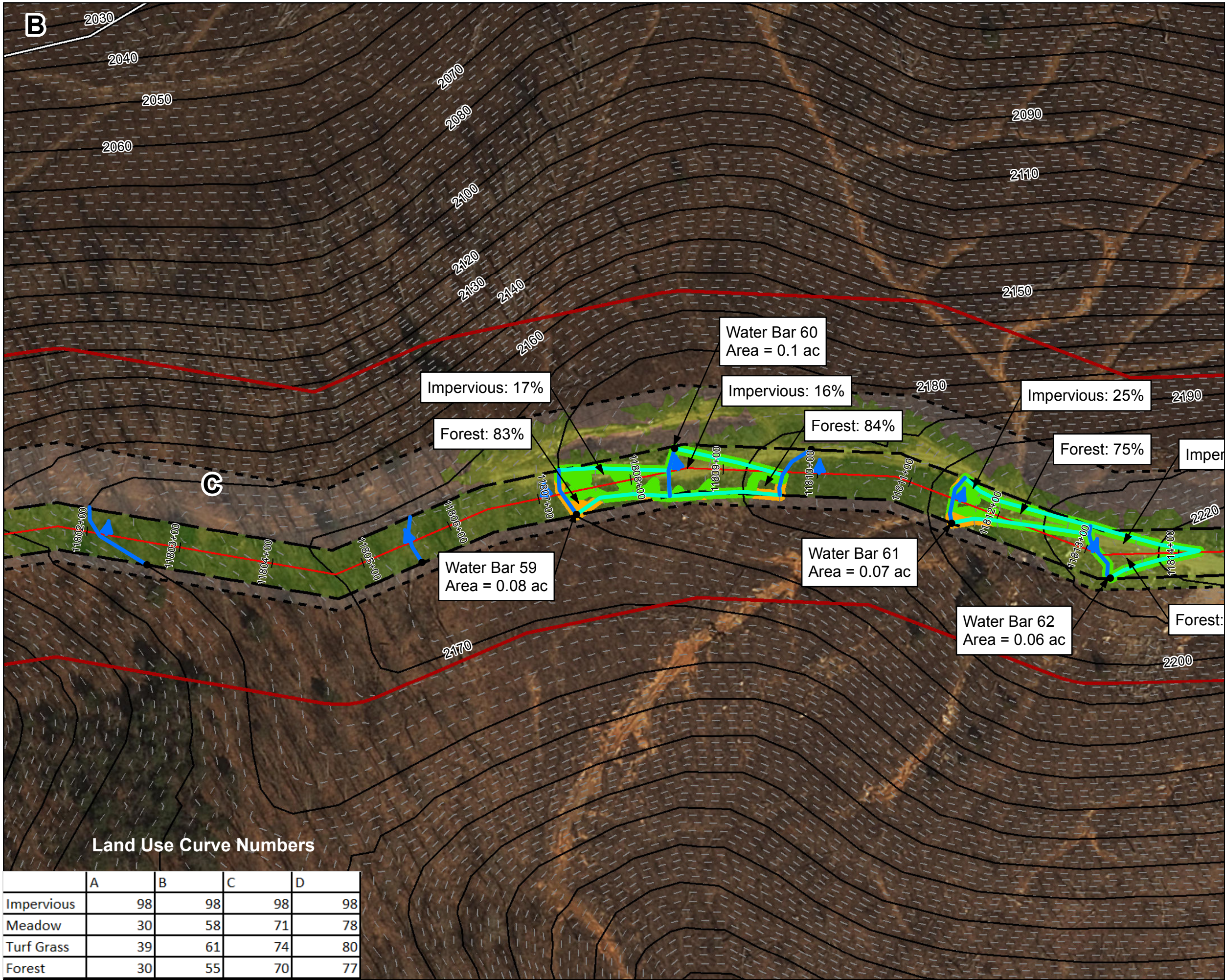
Montgomery County, Virginia

March, 2018

Data Sources: Imagery from ESRI Streaming Data 2014, Delineated streams surveyed by Tetra Tech Inc. 2014 to 2017, Transportation data from VITA map layer 2016, Elevation data derived from LIDAR provided by EQT 2016, Soils from NRCS Gridded Soil Survey Geographic (SSURGO) database 2014, Land Use digitized from ESRI World Imagery 2015, Agricultural Area from National Land Cover Dataset 2011.

Land Use Curve Numbers

	A	B	C	D
Impervious	98	98	98	98
Meadow	30	58	71	78
Turf Grass	39	61	74	80
Forest	30	55	70	77



Legend

- Approximate Location of Water Bar End Treatment
- Permanent Water Bar 10-ft End Treatment
- Permanent Water Bar 15-ft End Treatment
- Permanent Water Bar 20-ft End Treatment
- Sheetflow
- Shallow Concentrated Flow
- Streams
- Stationing
- Alignment Centerline
- Permanent Easement
- Limit of Disturbance
- MLV Site
- Access Road Permanent Easement
- Existing Impervious Surveyed Road Edge
- New/Proposed Impervious Road Edge
- Water Bar Drainage Area
- 100-year Floodplain
- Pond
- Wetland
- Hydrologic Soil Groups
- 100 ft Buffer off of Limits of Disturbance
- Agricultural
- Forest
- Impervious
- Meadow
- Turf/Grass
- Open Water
- Agricultural
- Barren
- Brush
- Meadow
- 10-foot Contour
- 2-foot Contour

NAD 1983 UTM 17N (feet)

1 in = 100 feet

100 50 0 100 Feet

Mountain Valley Pipeline Project

Mountain Valley PIPELINE

Stormwater Drainage Exhibits

Water Bar 59

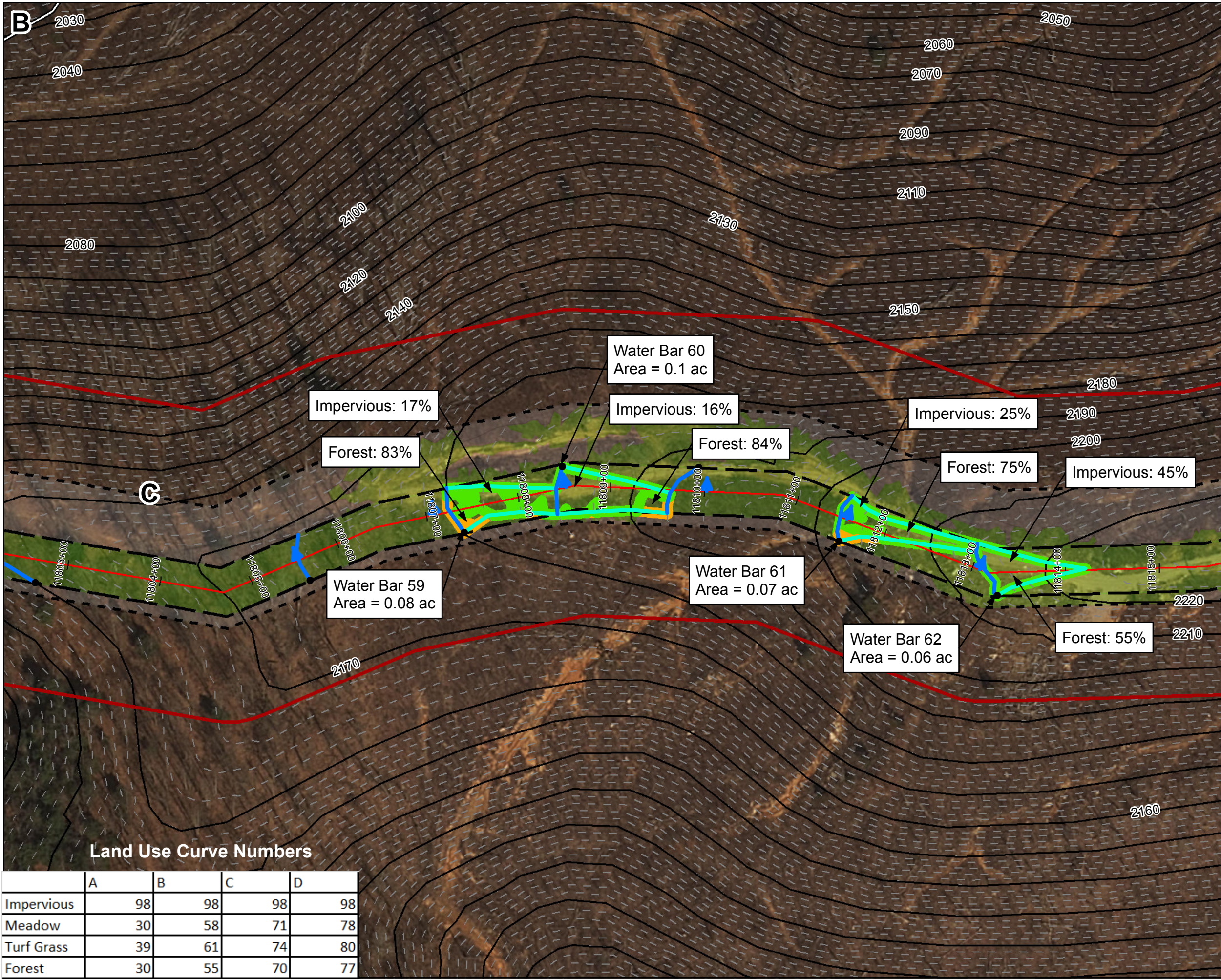
Spread 9

Figure 006

Montgomery County, Virginia

March, 2018

Data Sources: Imagery from ESRI Streaming Data 2014, Delineated streams surveyed by Tetra Tech Inc. 2014 to 2017, Transportation data from VITA map layer 2016, Elevation data derived from LIDAR provided by EQT 2016, Soils from NRCS Gridded Soil Survey Geographic (SSURGO) database 2014, Land Use digitized from ESRI World Imagery 2015, Agricultural Area from National Land Cover Dataset 2011.



Legend

- Approximate Location of Water Bar End Treatment
- Permanent Water Bar 10-ft End Treatment
- Permanent Water Bar 15-ft End Treatment
- Permanent Water Bar 20-ft End Treatment
- Sheetflow
- Shallow Concentrated Flow
- Streams
- Stationing
- Alignment Centerline
- Permanent Easement
- Limit of Disturbance
- MLV Site
- Access Road Permanent Easement
- Existing Impervious Surveyed Road Edge
- New/Proposed Impervious Road Edge
- Water Bar Drainage Area
- 100-year Floodplain
- Pond
- Wetland
- Hydrologic Soil Groups
- 100 ft Buffer off of Limits of Disturbance
- Agricultural
- Forest
- Impervious
- Meadow
- Turf/Grass
- Open Water
- Agricultural
- Barren
- Brush
- Meadow
- 10-foot Contour
- 2-foot Contour

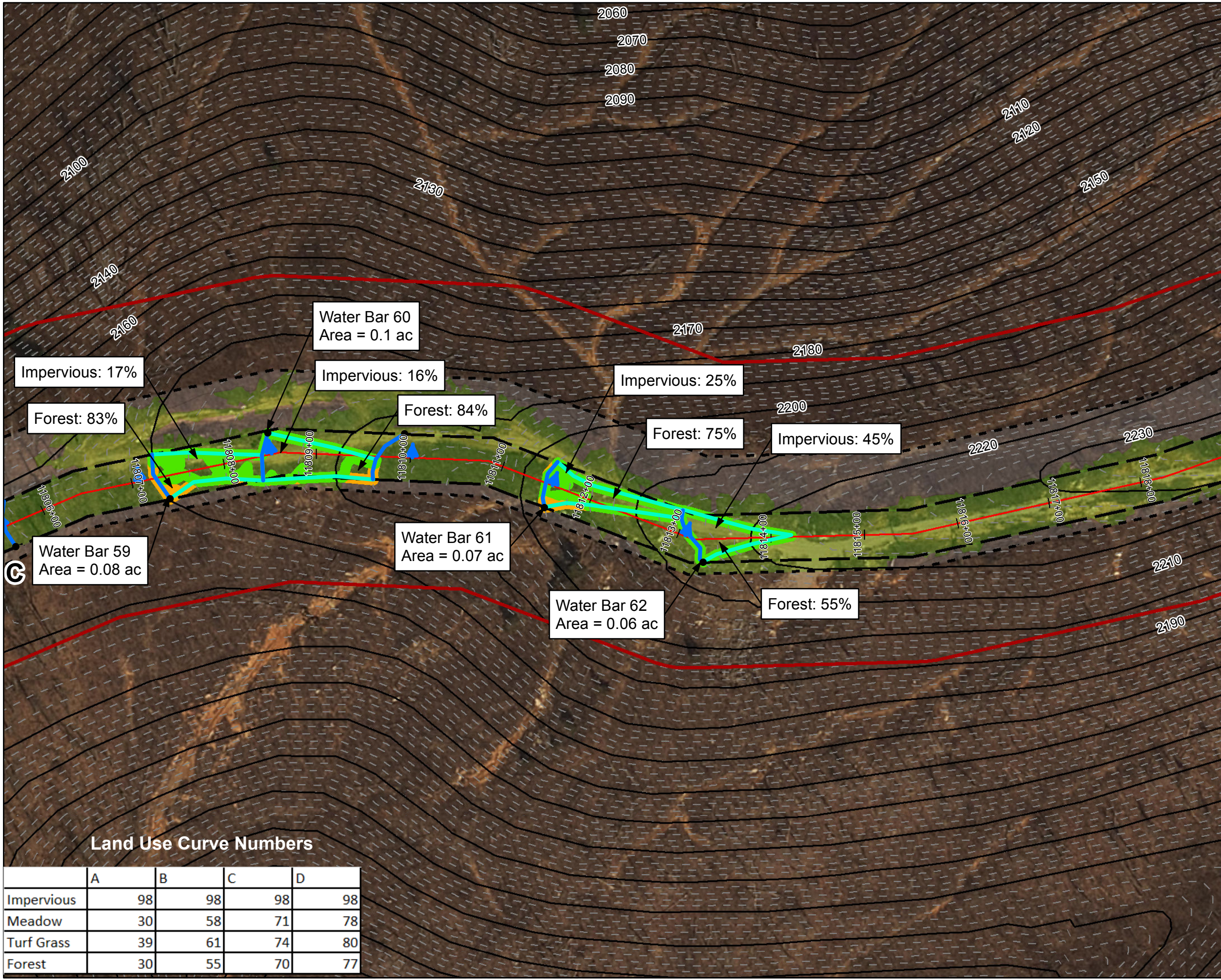
NAD 1983 UTM 17N (feet)

1 in = 100 feet

Mountain Valley Pipeline Project

Stormwater Drainage Exhibits
Water Bar 60
Spread 9
Figure 007
Montgomery County, Virginia
March, 2018

Data Sources: Imagery from ESRI Streaming Data 2014, Delineated streams surveyed by Tetra Tech Inc. 2014 to 2017, Transportation data from VITA map layer 2016, Elevation data derived from LIDAR provided by EQT 2016, Soils from NRCS Gridded Soil Survey Geographic (SSURGO) database 2014, Land Use digitized from ESRI World Imagery 2015, Agricultural Area from National Land Cover Dataset 2011.



Legend

- Approximate Location of Water Bar End Treatment
- Permanent Water Bar 10-ft End Treatment
- Permanent Water Bar 15-ft End Treatment
- Permanent Water Bar 20-ft End Treatment
- Sheetflow
- Shallow Concentrated Flow
- Streams
- Stationing
- Alignment Centerline
- Permanent Easement
- Limit of Disturbance
- MLV Site
- Access Road Permanent Easement
- Existing Impervious Surveyed Road Edge
- New/Proposed Impervious Road Edge
- Water Bar Drainage Area
- 100-year Floodplain


- Pond
- Wetland
- Hydrologic Soil Groups
- 100 ft Buffer off of Limits of Disturbance
- Agricultural
- Forest
- Impervious
- Meadow
- Turf/Grass
- Open Water
- Agricultural
- Barren
- Brush
- Meadow
- 10-foot Contour
- 2-foot Contour

NAD 1983 UTM 17N (feet)

1 in = 100 feet

100 50 0 100 Feet

Mountain Valley Pipeline Project

 **Mountain Valley**
PIPELINE

Stormwater Drainage Exhibits
Water Bar 61
Spread 9

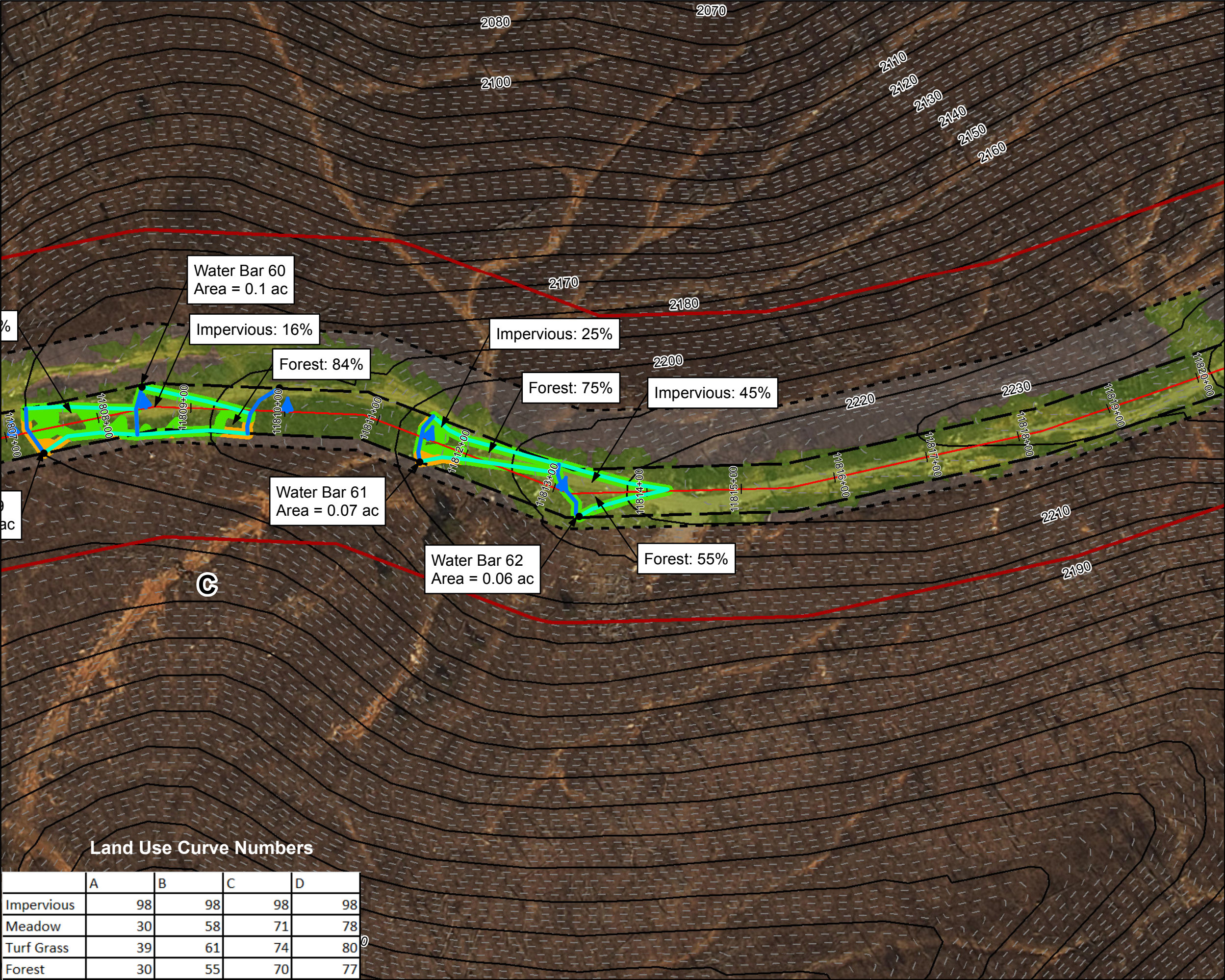
Figure 008
Montgomery County, Virginia

March, 2018

Data Sources: Imagery from ESRI Streaming Data 2014, Delineated streams surveyed by Tetra Tech Inc. 2014 to 2017, Transportation data from VITA map layer 2016, Elevation data derived from LIDAR provided by EQT 2016, Soils from NRCS Gridded Soil Survey Geographic (SSURGO) database 2014, Land Use digitized from ESRI World Imagery 2015, Agricultural Area from National Land Cover Dataset 2011.

Land Use Curve Numbers

	A	B	C	D
Impervious	98	98	98	98
Meadow	30	58	71	78
Turf Grass	39	61	74	80
Forest	30	55	70	77



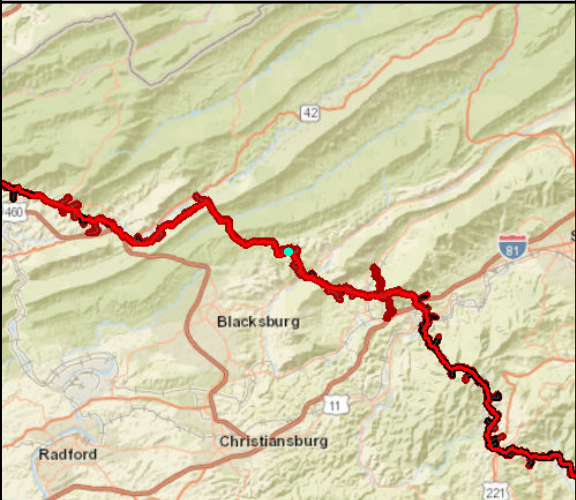
Legend

- Approximate Location of Water Bar End Treatment
- Permanent Water Bar 10-ft End Treatment
- Permanent Water Bar 15-ft End Treatment
- Permanent Water Bar 20-ft End Treatment
- Sheetflow
- Shallow Concentrated Flow
- Streams
- Stationing
- Alignment Centerline
- Permanent Easement
- Limit of Disturbance
- MLV Site
- Access Road Permanent Easement
- Existing Impervious Surveyed Road Edge
- New/Proposed Impervious Road Edge
- Water Bar Drainage Area
- 100-year Floodplain
- Pond
- Wetland
- Hydrologic Soil Groups
- 100 ft Buffer off of Limits of Disturbance
- Agricultural
- Forest
- Impervious
- Meadow
- Turf/Grass
- Open Water
- Agricultural
- Barren
- Brush
- Meadow
- 10-foot Contour
- 2-foot Contour

NAD 1983 UTM 17N (feet)

1 in = 100 feet

100 50 0 100 Feet



Mountain Valley Pipeline Project



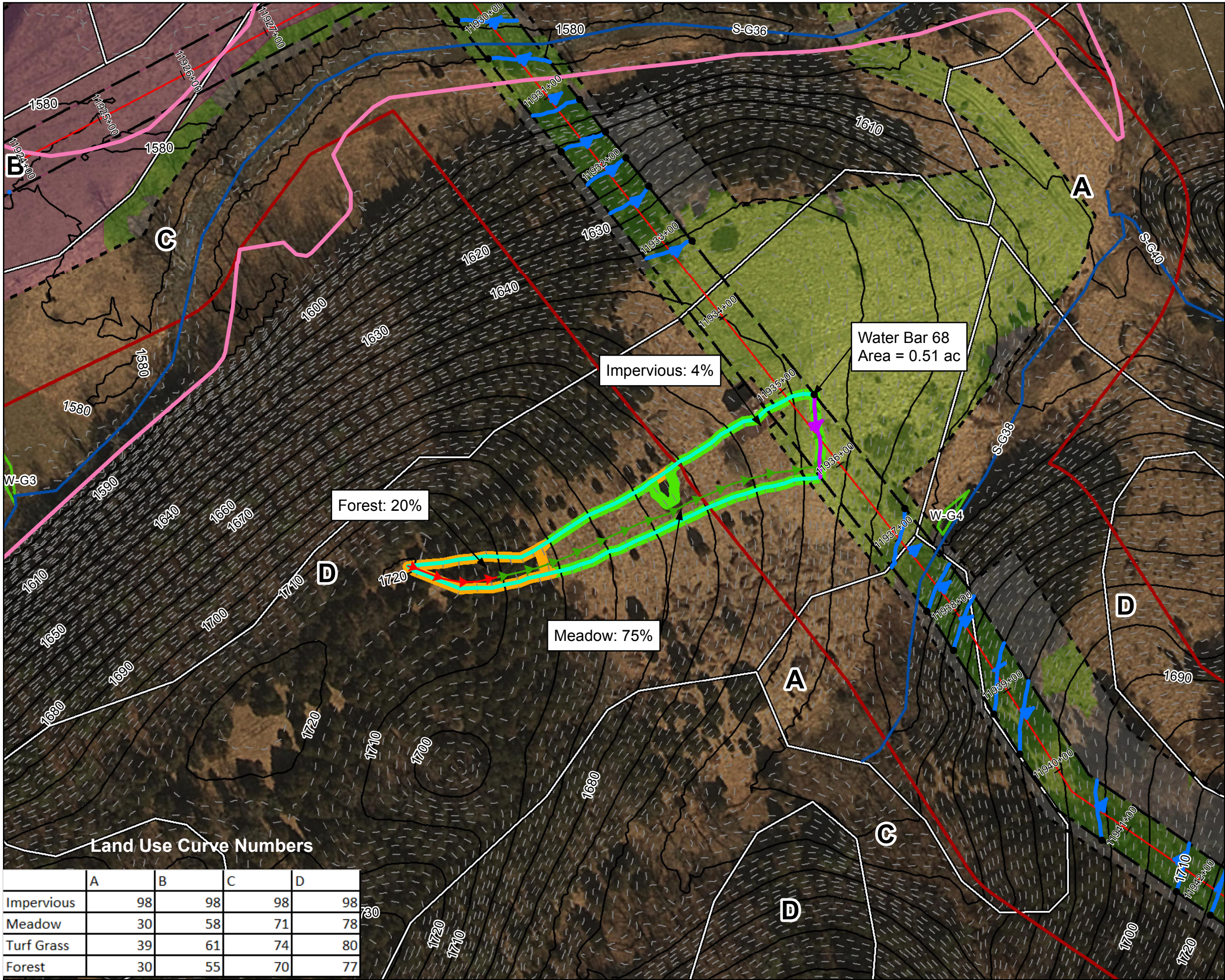
Stormwater Drainage Exhibits
Water Bar 62
Spread 9

Figure 009
Montgomery County, Virginia

March, 2018

Data Sources: Imagery from ESRI Streaming Data 2014, Delineated streams surveyed by Tetra Tech Inc. 2014 to 2017, Transportation data from VITA map layer 2016, Elevation data derived from LIDAR provided by EQT 2016, Soils from NRCS Gridded Soil Survey Geographic (SSURGO) database 2014, Land Use digitized from ESRI World Imagery 2015, Agricultural Area from National Land Cover Dataset 2011.

	A	B	C	D
Impervious	98	98	98	98
Meadow	30	58	71	78
Turf Grass	39	61	74	80
Forest	30	55	70	77



Legend

- Approximate Location of Water Bar End Treatment
- Permanent Water Bar 10-ft End Treatment
- Permanent Water Bar 15-ft End Treatment
- Permanent Water Bar 20-ft End Treatment
- Sheetflow
- Shallow Concentrated Flow
- Streams
- Stationing
- Alignment Centerline
- Permanent Easement
- Limit of Disturbance
- MLV Site
- Access Road Permanent Easement
- Existing Impervious Surveyed Road Edge
- New/Proposed Impervious Road Edge
- Water Bar Drainage Area
- 100-year Floodplain

- Pond
- Wetland
- Hydrologic Soil Groups
- 100 ft Buffer off of Limits of Disturbance
- Agricultural
- Forest
- Impervious
- Meadow
- Turf/Grass
- Open Water
- Agricultural
- Barren
- Brush
- Meadow
- 10-foot Contour
- 2-foot Contour

NAD 1983 UTM 17N (feet)

1 in = 100 feet

Mountain Valley Pipeline Project

Stormwater Drainage Exhibits

Water Bar 68

Spread 9

Figure 010

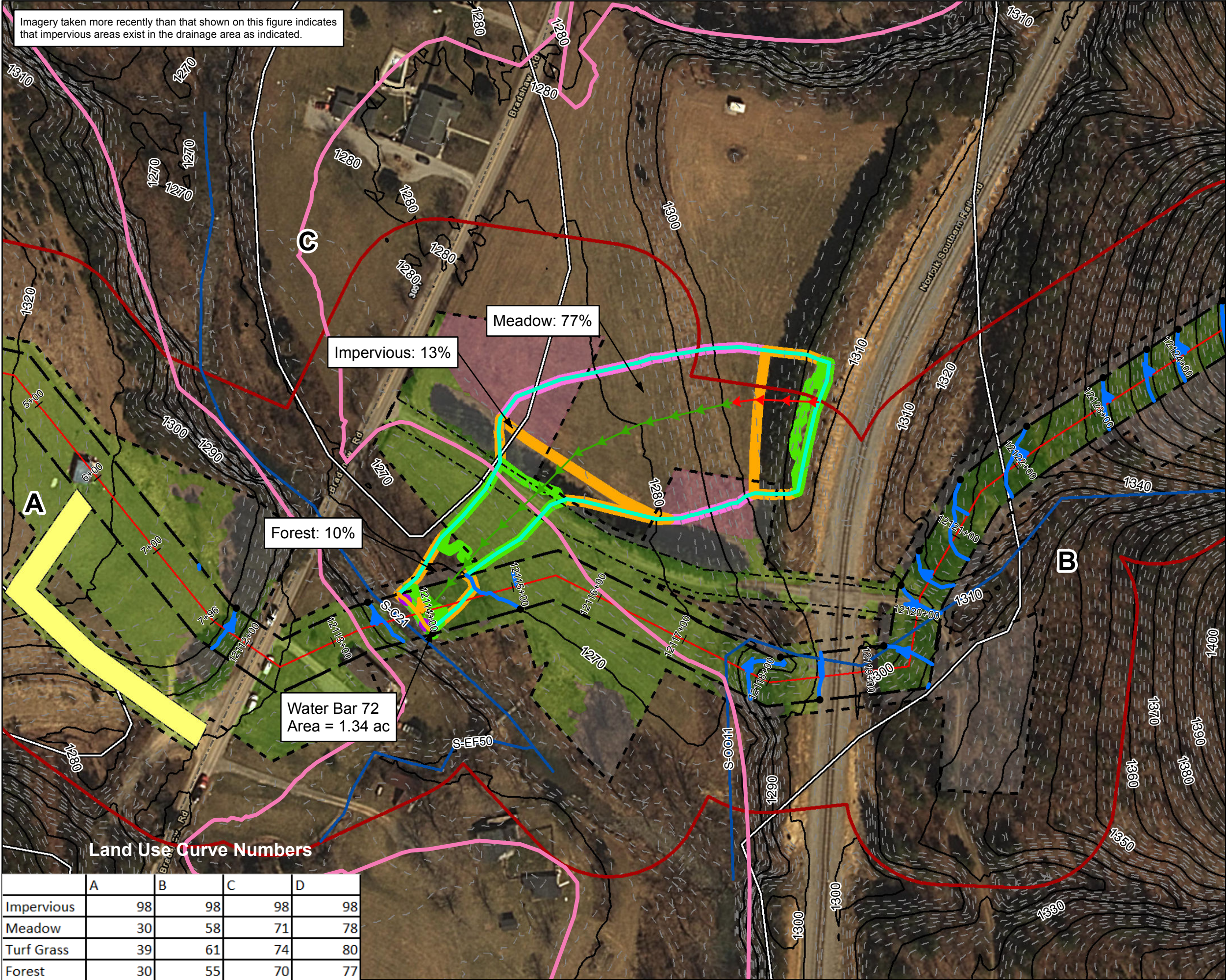
Montgomery County, Virginia

March, 2018

Data Sources: Imagery from ESRI Streaming Data 2014, Delineated streams surveyed by Tetra Tech Inc. 2014 to 2017, Transportation data from VITA map layer 2016, Elevation data derived from LIDAR provided by EQT 2016, Soils from NRCS Gridded Soil Survey Geographic (SSURGO) database 2014, Land Use digitized from ESRI World Imagery 2015, Agricultural Area from National Land Cover Dataset 2011.

Land Use Curve Numbers

	A	B	C	D
Impervious	98	98	98	98
Meadow	30	58	71	78
Turf Grass	39	61	74	80
Forest	30	55	70	77



Legend

- Approximate Location of Water Bar End Treatment
- Permanent Water Bar 10-ft End Treatment
- Permanent Water Bar 15-ft End Treatment
- Permanent Water Bar 20-ft End Treatment
- Sheetflow
- Shallow Concentrated Flow
- Streams
- Stationing
- Alignment Centerline
- Permanent Easement
- Limit of Disturbance
- MLV Site
- Access Road Permanent Easement
- Existing Impervious Surveyed Road Edge
- New/Proposed Impervious Road Edge
- Water Bar Drainage Area
- 100-year Floodplain
- Pond
- Wetland
- Hydrologic Soil Groups
- 100 ft Buffer off of Limits of Disturbance
- Agricultural
- Forest
- Impervious
- Meadow
- Turf/Grass
- Open Water
- Agricultural
- Barren
- Brush
- Meadow
- 10-foot Contour
- 2-foot Contour

NAD 1983 UTM 17N (feet)

1 in = 100 feet

Mountain Valley Pipeline Project

Mountain Valley PIPELINE

Stormwater Drainage Exhibits

Water Bar 72

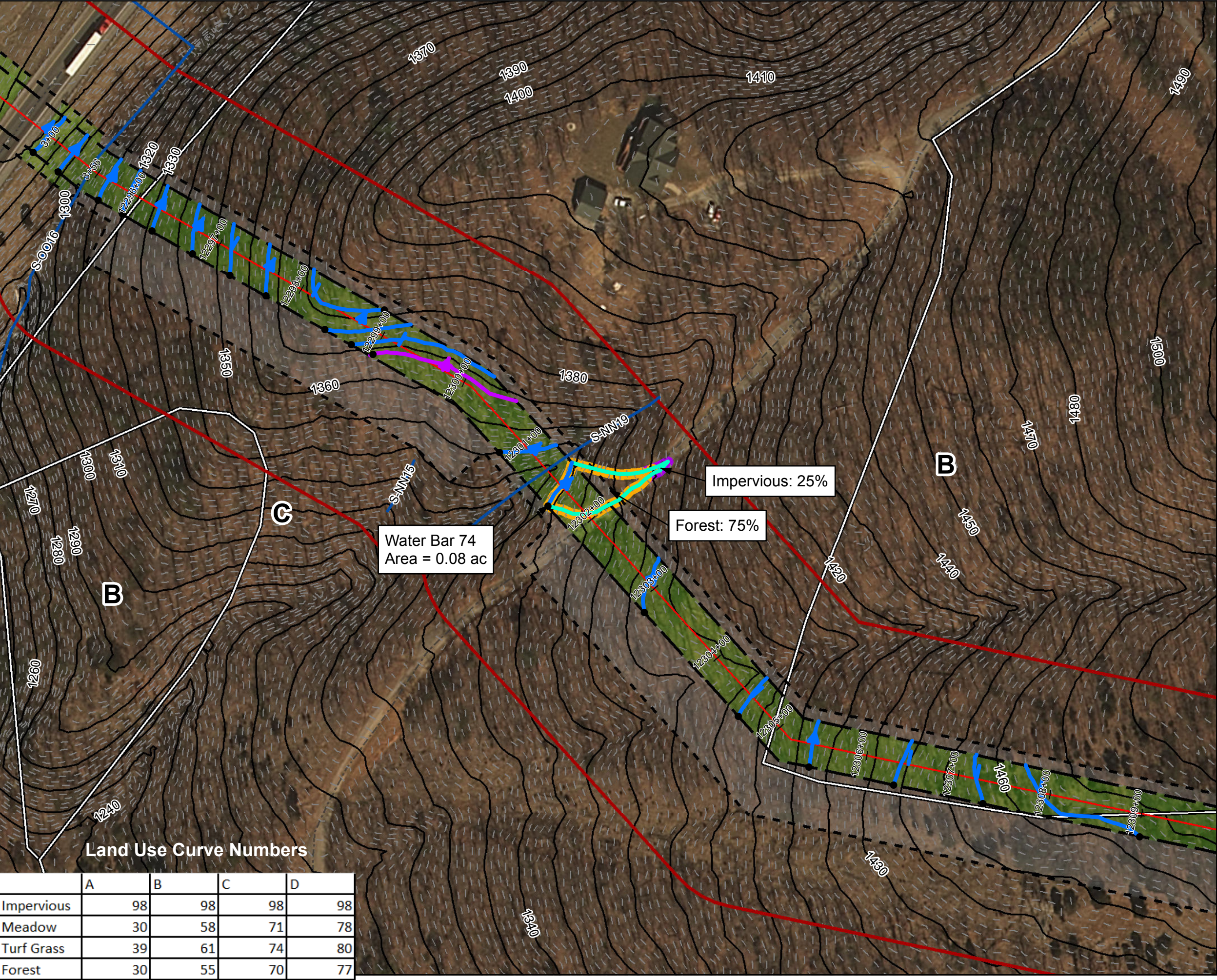
Spread 9

Figure 011

Montgomery County, Virginia

March, 2018

Data Sources: Imagery from ESRI Streaming Data 2014, Delineated streams surveyed by Tetra Tech Inc. 2014 to 2017, Transportation data from VITA map layer 2016, Elevation data derived from LIDAR provided by EQT 2016, Soils from NRCS Gridded Soil Survey Geographic (SSURGO) database 2014, Land Use digitized from ESRI World Imagery 2015, Agricultural Area from National Land Cover Dataset 2011.



Legend

- Approximate Location of Water Bar End Treatment
- Permanent Water Bar 10-ft End Treatment
- Permanent Water Bar 15-ft End Treatment
- Permanent Water Bar 20-ft End Treatment
- Sheetflow
- Shallow Concentrated Flow
- Streams
- Stationing
- Alignment Centerline
- Permanent Easement
- Limit of Disturbance
- MLV Site
- Access Road Permanent Easement
- Existing Impervious Surveyed Road Edge
- New/Proposed Impervious Road Edge
- Water Bar Drainage Area
- 100-year Floodplain

- Pond
- Wetland
- Hydrologic Soil Groups
- 100 ft Buffer off of Limits of Disturbance
- Agricultural
- Forest
- Impervious
- Meadow
- Turf/Grass
- Open Water
- Agricultural
- Barren
- Brush
- Meadow
- 10-foot Contour
- 2-foot Contour

NAD 1983 UTM 17N (feet)

1 in = 100 feet

100 50 0 100 Feet

Mountain Valley Pipeline Project

Mountain Valley PIPELINE

Stormwater Drainage Exhibits

Water Bar 74

Spread 9

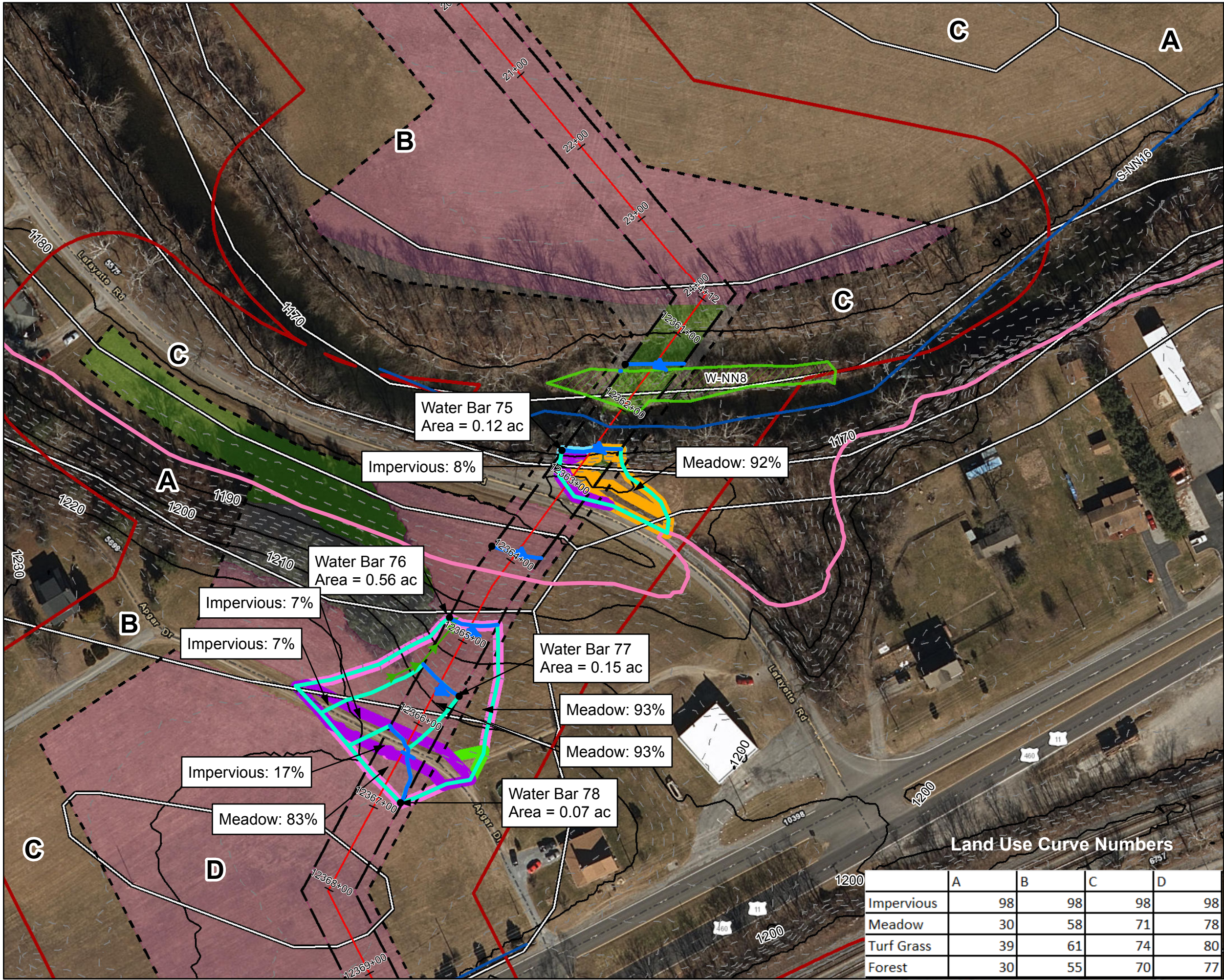
Figure 012

Montgomery County, Virginia

March, 2018

Data Sources: Imagery from ESRI Streaming Data 2014, Delineated streams surveyed by Tetra Tech Inc. 2014 to 2017, Transportation data from VITA map layer 2016, Elevation data derived from LIDAR provided by EQT 2016, Soils from NRCS Gridded Soil Survey Geographic (SSURGO) database 2014, Land Use digitized from ESRI World Imagery 2015, Agricultural Area from National Land Cover Dataset 2011.

	A	B	C	D
Impervious	98	98	98	98
Meadow	30	58	71	78
Turf Grass	39	61	74	80
Forest	30	55	70	77



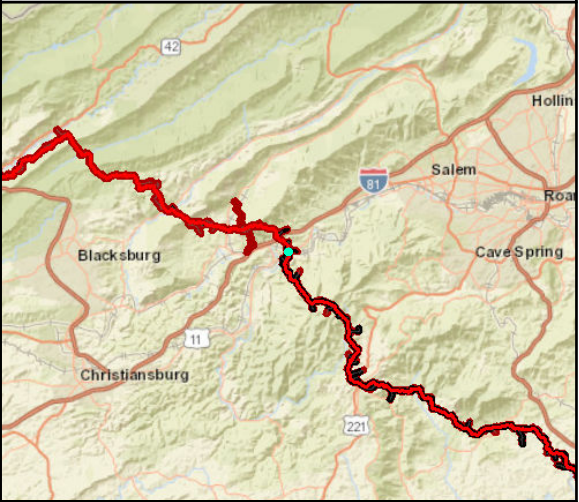
Legend

- Approximate Location of Water Bar End Treatment
- Permanent Water Bar 10-ft End Treatment
- Permanent Water Bar 15-ft End Treatment
- Permanent Water Bar 20-ft End Treatment
- Sheetflow
- Shallow Concentrated Flow
- Streams
- Stationing
- Alignment Centerline
- Permanent Easement
- Limit of Disturbance
- MLV Site
- Access Road Permanent Easement
- Existing Impervious
- New/Proposed Impervious Road Edge
- Water Bar Drainage Area
- 100-year Floodplain
- Pond
- Wetland
- Hydrologic Soil Groups
- 100 ft Buffer off of Limits of Disturbance
- Agricultural
- Forest
- Impervious
- Meadow
- Turf/Grass
- Open Water
- Agricultural
- Barren
- Brush
- Meadow
- 10-foot Contour
- 2-foot Contour

NAD 1983 UTM 17N (feet)

1 in = 100 feet

100 50 0 100 Feet

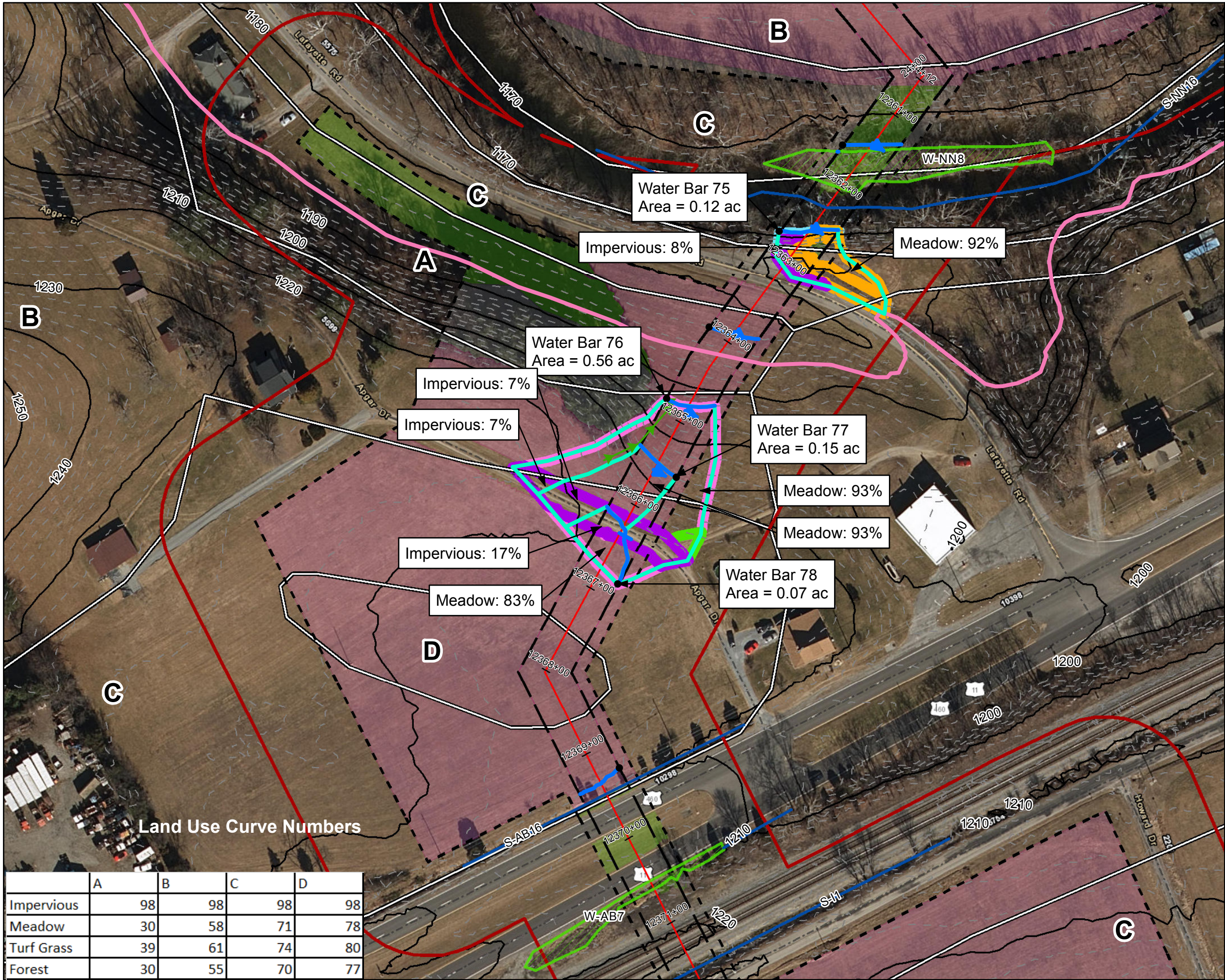


Mountain Valley Pipeline Project

Stormwater Drainage Exhibits
Water Bar 75
Spread 9
Figure 013
Montgomery County, Virginia
March, 2018

Data Sources: Imagery from ESRI Streaming Data 2014, Delineated streams surveyed by Tetra Tech Inc. 2014 to 2017, Transportation data from VITA map layer 2016, Elevation data derived from LIDAR provided by EQT 2016, Soils from NRCS Gridded Soil Survey Geographic (SSURGO) database 2014, Land Use digitized from ESRI World Imagery 2015, Agricultural Area from National Land Cover Dataset 2011.

	A	B	C	D
Impervious	98	98	98	98
Meadow	30	58	71	78
Turf Grass	39	61	74	80
Forest	30	55	70	77



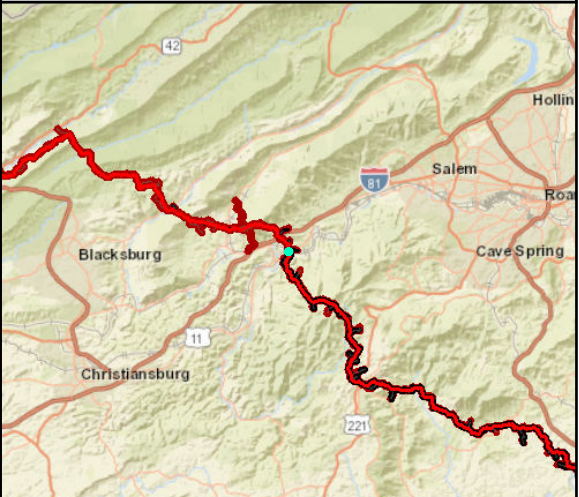
Legend

- Approximate Location of Water Bar End Treatment
- Permanent Water Bar 10-ft End Treatment
- Permanent Water Bar 15-ft End Treatment
- Permanent Water Bar 20-ft End Treatment
- Sheetflow
- Shallow Concentrated Flow
- Streams
- Stationing
- Alignment Centerline
- Permanent Easement
- Limit of Disturbance
- MLV Site
- Access Road Permanent Easement
- Existing Impervious
- New/Proposed Impervious Road Edge
- Water Bar Drainage Area
- 100-year Floodplain
- Pond
- Wetland
- Hydrologic Soil Groups
- 100 ft Buffer off of Limits of Disturbance
- Agricultural
- Forest
- Impervious
- Meadow
- Turf/Grass
- Open Water
- Agricultural
- Barren
- Brush
- Meadow
- 10-foot Contour
- 2-foot Contour

NAD 1983 UTM 17N (feet)

1 in = 100 feet

100 50 0 100 Feet



Mountain Valley Pipeline Project



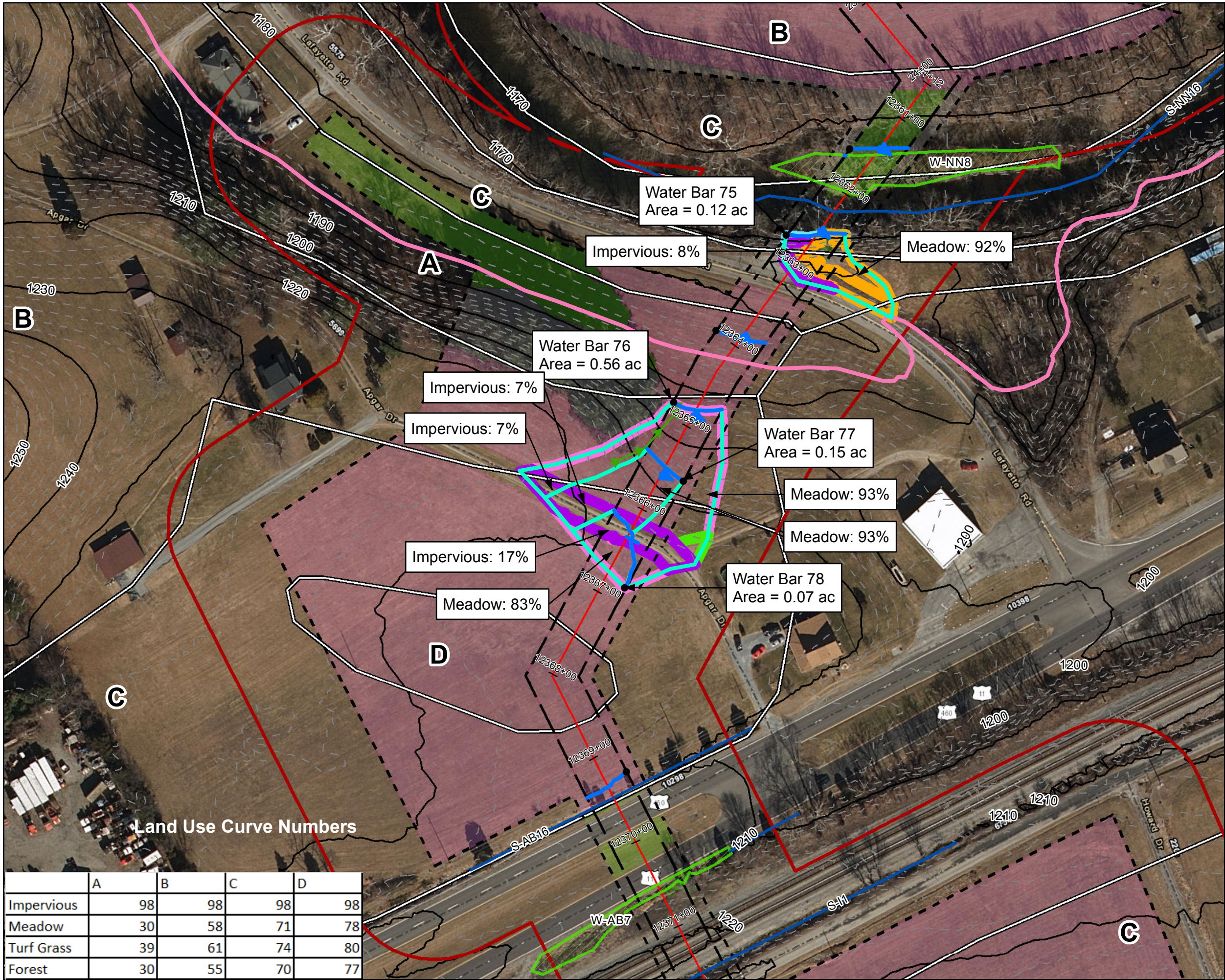
Stormwater Drainage Exhibits
Water Bar 76
Spread 9

Figure 014
Montgomery County, Virginia

March, 2018

Data Sources: Imagery from ESRI Streaming Data 2014, Delineated streams surveyed by Tetra Tech Inc. 2014 to 2017, Transportation data from VITA map layer 2016, Elevation data derived from LIDAR provided by EQT 2016, Soils from NRCS Gridded Soil Survey Geographic (SSURGO) database 2014, Land Use digitized from ESRI World Imagery 2015, Agricultural Area from National Land Cover Dataset 2011.

	A	B	C	D
Impervious	98	98	98	98
Meadow	30	58	71	78
Turf Grass	39	61	74	80
Forest	30	55	70	77



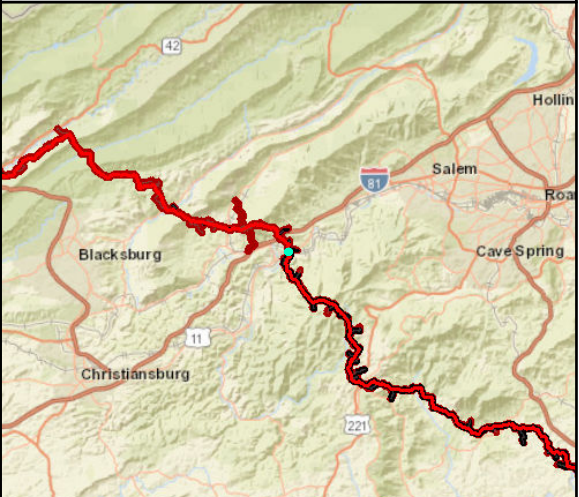
Legend

- Approximate Location of Water Bar End Treatment
- Permanent Water Bar 10-ft End Treatment
- Permanent Water Bar 15-ft End Treatment
- Permanent Water Bar 20-ft End Treatment
- Sheetflow
- Shallow Concentrated Flow
- Streams
- Stationing
- Alignment Centerline
- Permanent Easement
- Limit of Disturbance
- MLV Site
- Access Road Permanent Easement
- Existing Impervious
- New/Proposed Impervious Road Edge
- Water Bar Drainage Area
- 100-year Floodplain
- Pond
- Wetland
- Hydrologic Soil Groups
- 100 ft Buffer off of Limits of Disturbance
- Agricultural
- Forest
- Impervious
- Meadow
- Turf/Grass
- Open Water
- Agricultural
- Barren
- Brush
- Meadow
- 10-foot Contour
- 2-foot Contour

NAD 1983 UTM 17N (feet)

1 in = 100 feet

100 50 0 100 Feet



Mountain Valley Pipeline Project



Stormwater Drainage Exhibits
Water Bar 77
Spread 9

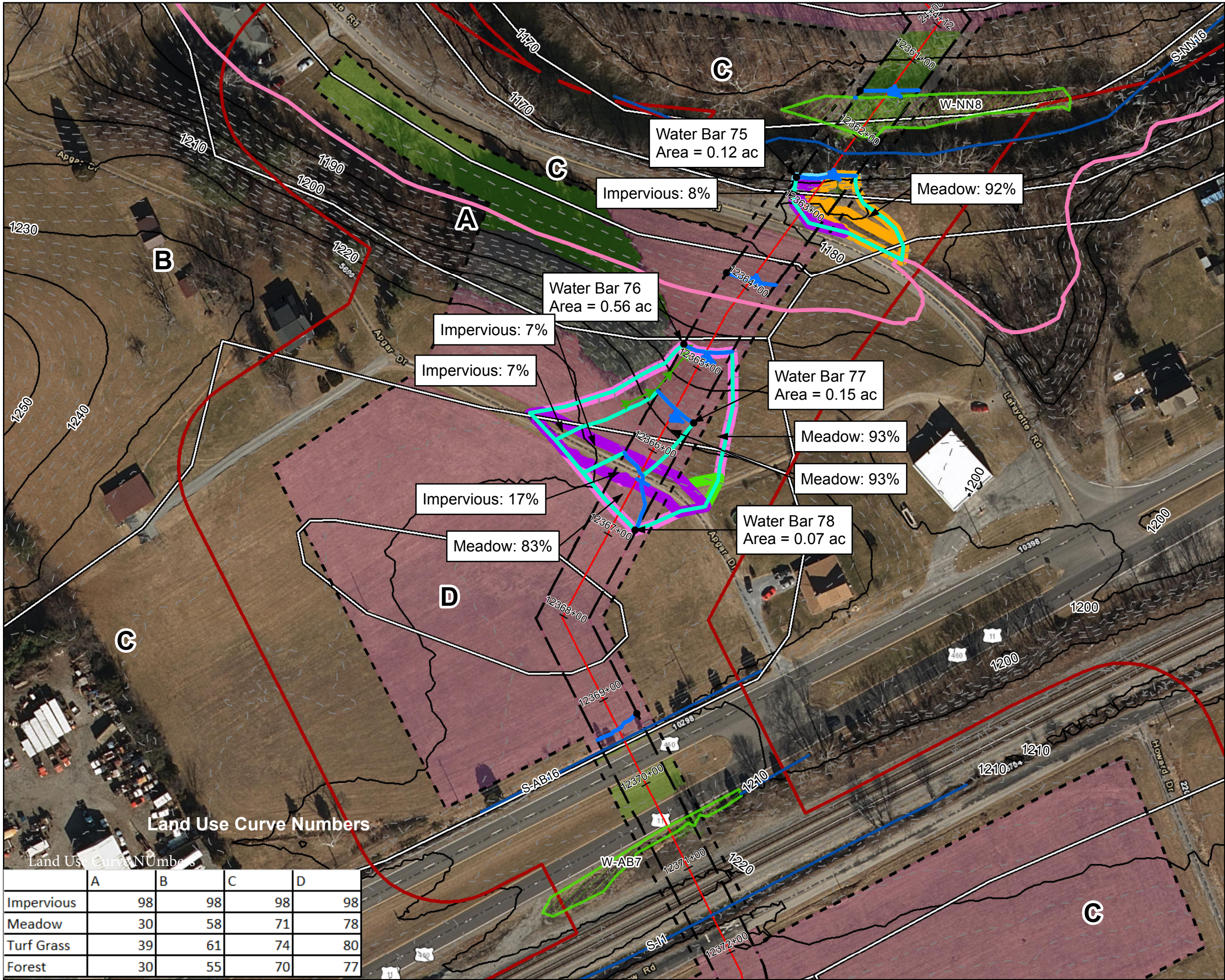
Figure 015
Montgomery County, Virginia

March, 2018

Data Sources: Imagery from ESRI Streaming Data 2014, Delineated streams surveyed by Tetra Tech Inc. 2014 to 2017, Transportation data from VITA map layer 2016, Elevation data derived from LIDAR provided by EQT 2016, Soils from NRCS Gridded Soil Survey Geographic (SSURGO) database 2014, Land Use digitized from ESRI World Imagery 2015, Agricultural Area from National Land Cover Dataset 2011.

Land Use Curve Numbers

	A	B	C	D
Impervious	98	98	98	98
Meadow	30	58	71	78
Turf Grass	39	61	74	80
Forest	30	55	70	77



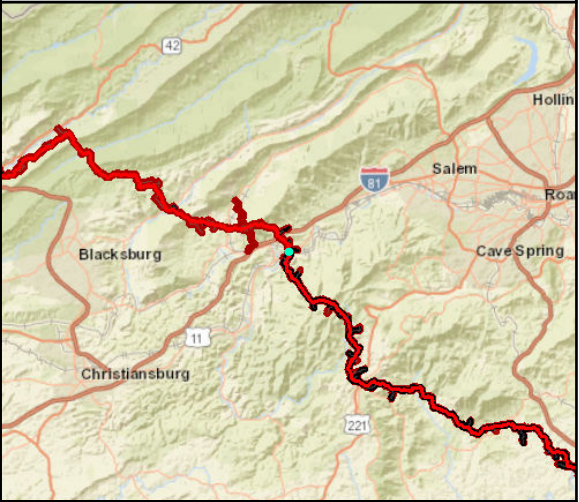
Legend

- Approximate Location of Water Bar End Treatment
- Permanent Water Bar 10-ft End Treatment
- Permanent Water Bar 15-ft End Treatment
- Permanent Water Bar 20-ft End Treatment
- Sheetflow
- Shallow Concentrated Flow
- Streams
- Stationing
- Alignment Centerline
- Permanent Easement
- Limit of Disturbance
- MLV Site
- Access Road Permanent Easement
- Existing Impervious Surveyed Road Edge
- New/Proposed Impervious Road Edge
- Water Bar Drainage Area
- 100-year Floodplain
- Pond
- Wetland
- Hydrologic Soil Groups
- 100 ft Buffer off of Limits of Disturbance
- Agricultural
- Forest
- Impervious
- Meadow
- Turf/Grass
- Open Water
- Agricultural
- Barren
- Brush
- Meadow
- 10-foot Contour
- 2-foot Contour

NAD 1983 UTM 17N (feet)

1 in = 100 feet

100 50 0 100 Feet



Mountain Valley Pipeline Project

Mountain Valley PIPELINE

Stormwater Drainage Exhibits

Water Bar 78 Spread 9

Figure 016
Montgomery County, Virginia

March, 2018

Data Sources: Imagery from ESRI Streaming Data 2014, Delineated streams surveyed by Tetra Tech Inc. 2014 to 2017, Transportation data from VITA map layer 2016, Elevation data derived from LIDAR provided by EQT 2016, Soils from NRCS Gridded Soil Survey Geographic (SSURGO) database 2014, Land Use digitized from ESRI World Imagery 2015, Agricultural Area from National Land Cover Dataset 2011.