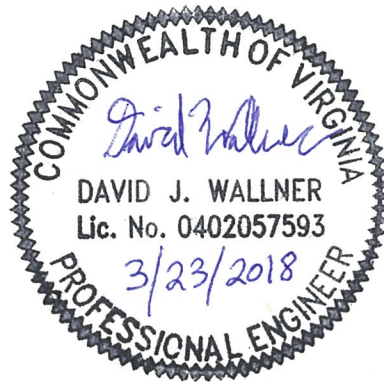
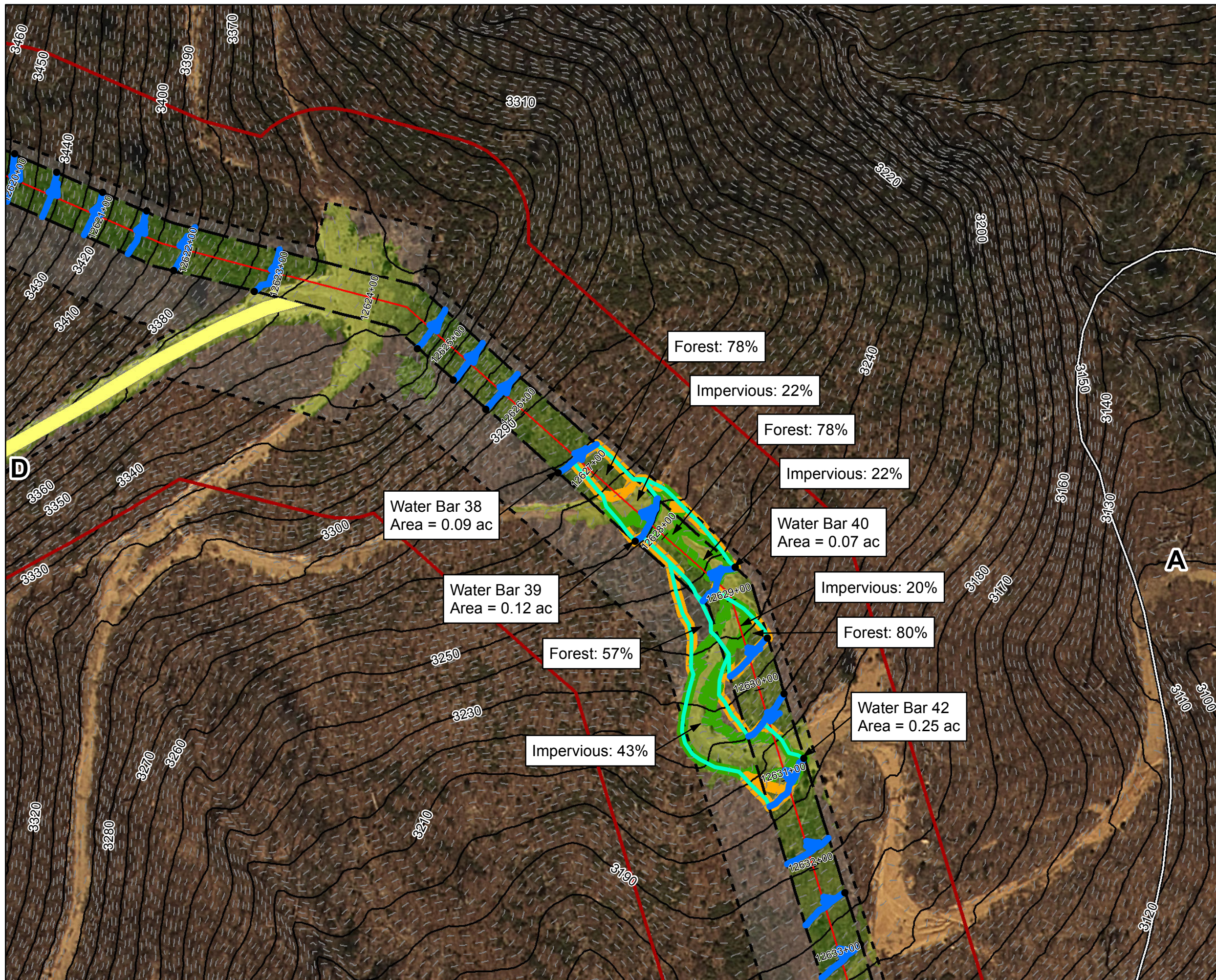


By virtue of this seal and signature, all supporting documents included in this package are accurate and support the design presented herein.





Legend

● Approximate Location of Water Bar End Treatment	100-year Floodplain
Permanent Water Bar 10-ft End Treatment	Pond
Permanent Water Bar 15-ft End Treatment	Wetland
Permanent Water Bar 20-ft End Treatment	Hydrologic Soil Groups
Sheetflow	100 ft Buffer off of Limits of Disturbance
Shallow Concentrated Flow	Agricultural
Streams	Forest
Stationing	Impervious
Alignment Centerline	Meadow
Permanent Easement	Agricultural
Limit of Disturbance	Barren
MLV Site	Brush
Access Road Permanent Easement	Meadow
Existing Impervious	10-foot Contour
Surveyed Road Edge	2-foot Contour
New/Proposed Impervious Road Edge	State Road Centerline
Water Bar Drainage Area	

NAD 1983 UTM 17N (feet)

1 in = 100 feet

Mountain Valley Pipeline Project

Mountain Valley PIPELINE

Stormwater Drainage Exhibits

Water Bar 38

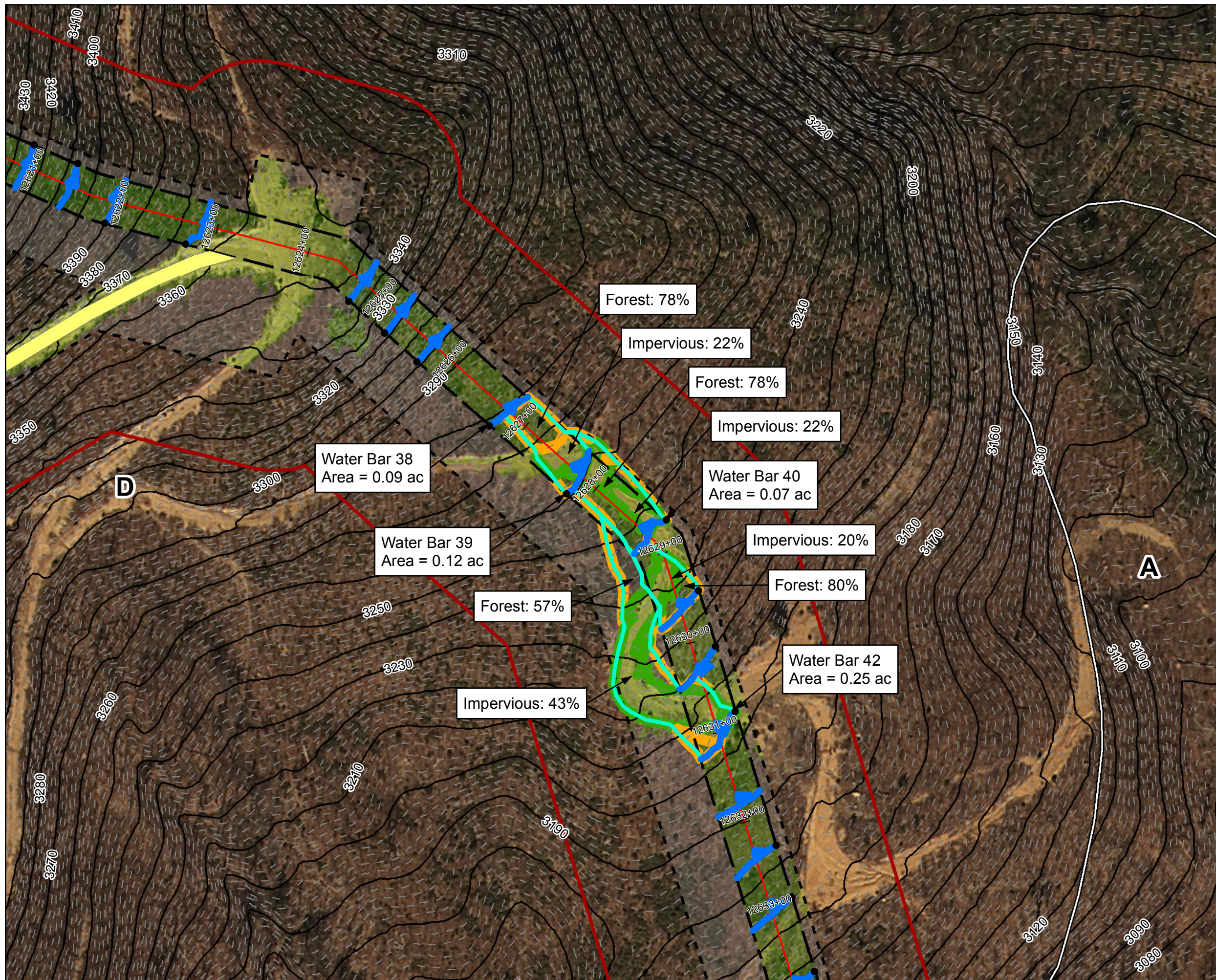
Spread 10

Figure 001

Roanoke County, Virginia

March, 2018

Data Sources: Imagery from ESRI Streaming Data 2014, Delineated streams surveyed by Tetra Tech Inc. 2014 to 2017, Transportation data from VITA map layer 2016, Elevation data derived from LIDAR provided by EQT 2016, Soils from NRCS Gridded Soil Survey Geographic (SSURGO) database 2014, Land Use digitized from ESRI World Imagery 2015, Agricultural Area from National Land Cover Dataset 2011.



Legend

● Approximate Location of Water Bar End Treatment	100-year Floodplain
Permanent Water Bar 10-ft End Treatment	Pond
Permanent Water Bar 15-ft End Treatment	Wetland
Permanent Water Bar 20-ft End Treatment	Hydrologic Soil Groups
Sheetflow	100 ft Buffer off of Limits of Disturbance
Shallow Concentrated Flow	Agricultural
Streams	Forest
Stationing	Impervious
Alignment Centerline	Meadow
Permanent Easement	Agricultural
Limit of Disturbance	Barren
MLV Site	Brush
Access Road Permanent Easement	Meadow
Existing Impervious Surveyed Road Edge	10-foot Contour
New/Proposed Impervious Road Edge	2-foot Contour
Water Bar Drainage Area	State Road Centerline

NAD 1983 UTM 17N (feet)

1 in = 100 feet

Mountain Valley Pipeline Project

Stormwater Drainage Exhibits

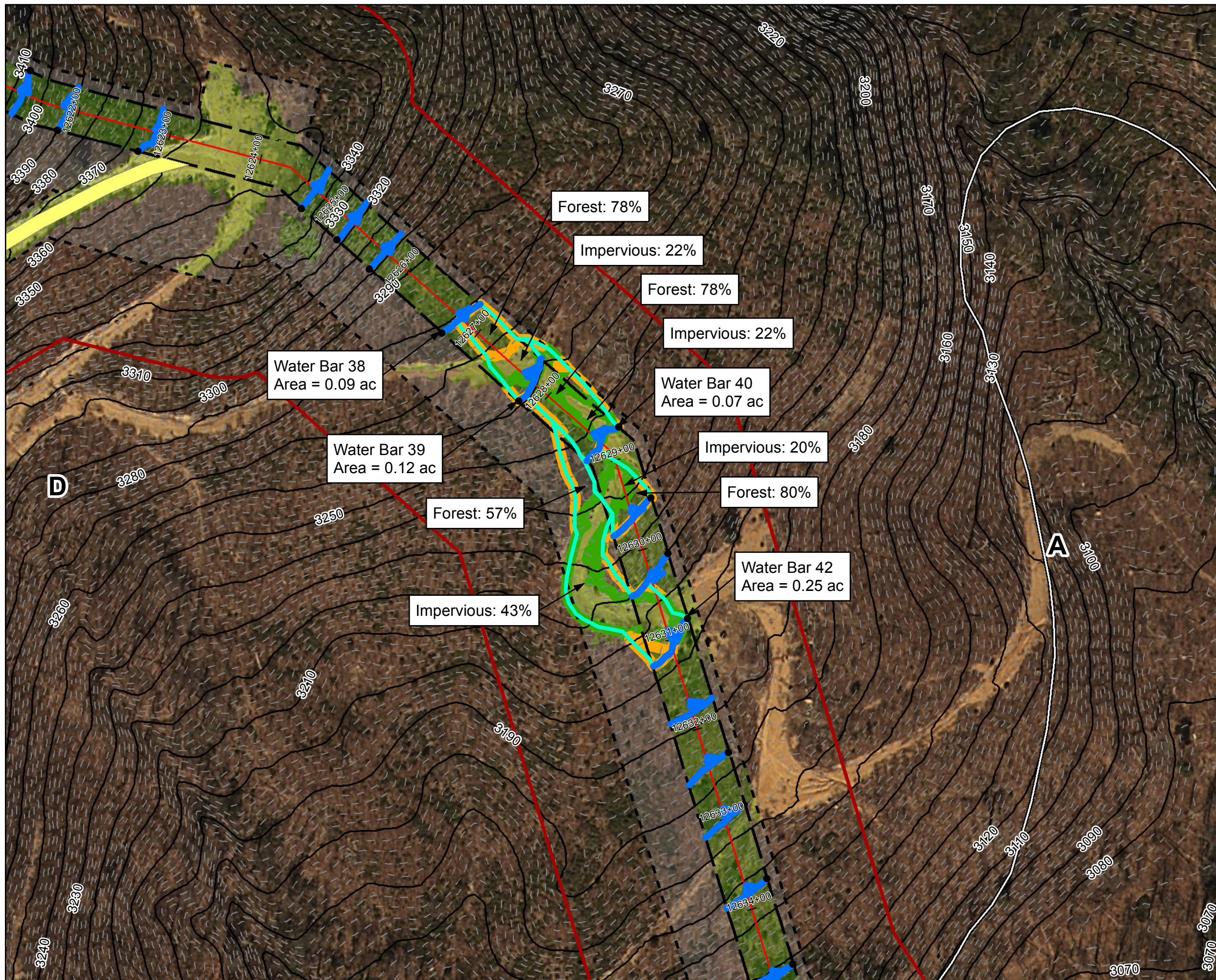
Water Bar 39

Spread 10

Figure 002
Roanoke County, Virginia

March, 2018

Data Sources: Imagery from ESRI Streaming Data 2014, Delineated streams surveyed by Tetra Tech Inc. 2014 to 2017, Transportation data from VITA map layer 2016, Elevation data derived from LIDAR provided by EQT 2016, Soils from NRCS Gridded Soil Survey Geographic (SSURGO) database 2014, Land Use digitized from ESRI World Imagery 2015, Agricultural Area from National Land Cover Dataset 2011.



Legend

- Approximate Location of Water Bar End Treatment
- Permanent Water Bar 10-ft End Treatment
- Permanent Water Bar 15-ft End Treatment
- Permanent Water Bar 20-ft End Treatment
- Sheetflow
- Shallow Concentrated Flow
- Streams
- Stationing
- Alignment Centerline
- Permanent Easement
- Limit of Disturbance
- MLV Site
- Access Road Permanent Easement
- Existing Impervious
- Surveyed Road Edge
- New/Proposed Impervious Road Edge
- Water Bar Drainage Area
- 100-year Floodplain
- Pond
- Wetland
- Hydrologic Soil Groups
- 100 ft Buffer off of Limits of Disturbance
- Agricultural
- Forest
- Impervious
- Meadow
- Agricultural
- Barren
- Brush
- Meadow
- 10-foot Contour
- 2-foot Contour
- State Road Centerline

NAD 1983 UTM 17N (feet)

1 in = 100 feet

100 50 0 100 Feet

W N E S

Mountain Valley Pipeline Project

Mountain Valley PIPELINE

Stormwater Drainage Exhibits

Water Bar 40

Spread 10

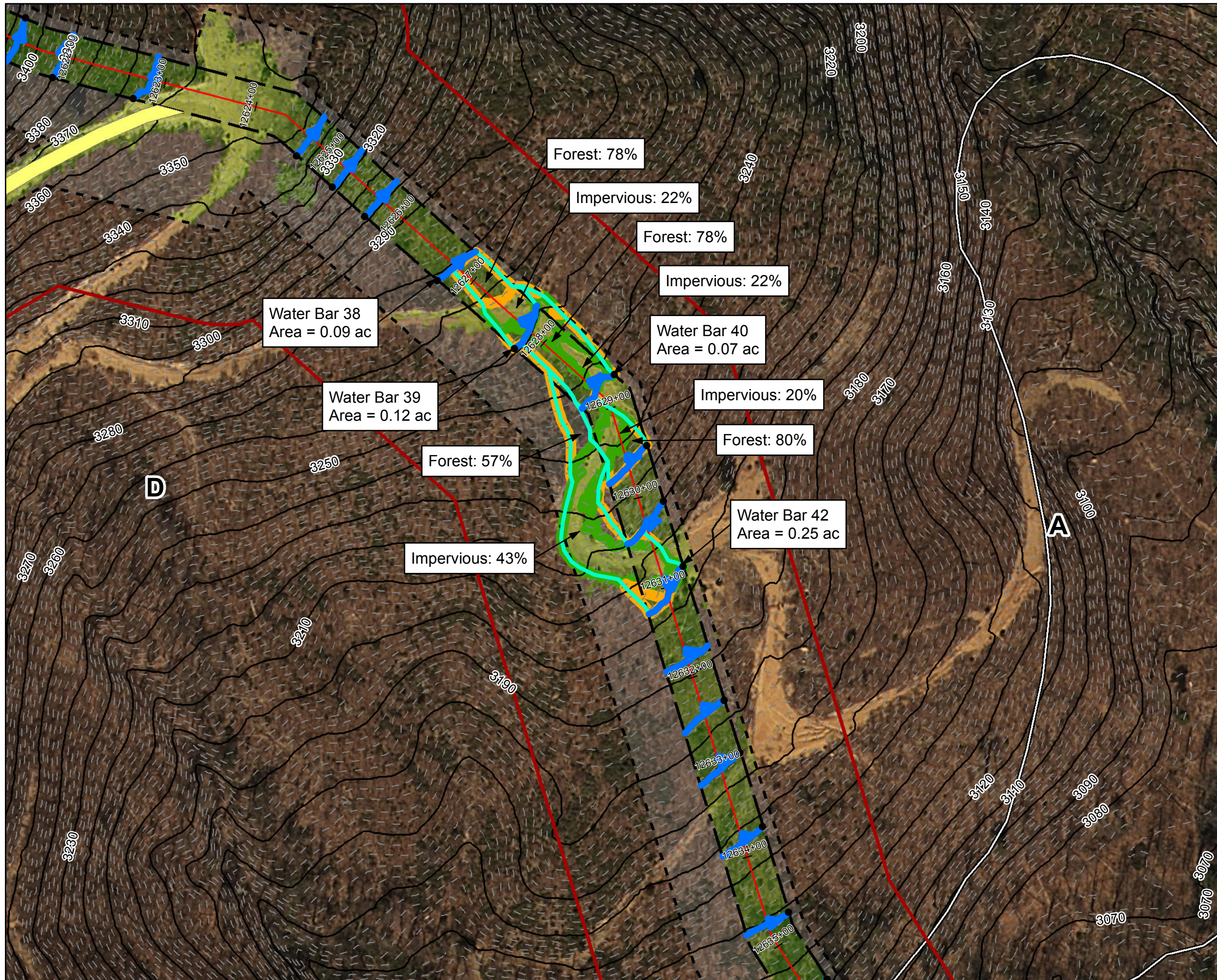
Figure 003

Roanoke County, Virginia

March, 2018

Data Sources: Imagery from ESRI Streaming Data 2014, Delineated streams surveyed by Tetra Tech Inc. 2014 to 2017, Transportation data from VITA map layer 2016, Elevation data derived from LIDAR provided by EQT 2016, Soils from NRCS Gridded Soil Survey Geographic (SSURGO) database 2014, Land Use digitized from ESRI World Imagery 2015, Agricultural Area from National Land Cover Dataset 2011.

Document Path: P:\GIS\SEQ1_MVP\Mapdocs\Drainage\WXP\MVP_Stormwater\Drainage_Exhibit_Spread10.mxd



Legend

- Approximate Location of Water Bar End Treatment
- Permanent Water Bar 10-ft End Treatment
- Permanent Water Bar 15-ft End Treatment
- Permanent Water Bar 20-ft End Treatment
- Sheetflow
- Shallow Concentrated Flow
- Streams
- Stationing
- Alignment Centerline
- Permanent Easement
- Limit of Disturbance
- MLV Site
- Access Road Permanent Easement
- Existing Impervious
- Surveyed Road Edge
- New/Proposed Impervious Road Edge
- Water Bar Drainage Area
- 100-year Floodplain
- Pond
- Wetland
- Hydrologic Soil Groups
- 100 ft Buffer off of Limits of Disturbance
- Agricultural
- Forest
- Impervious
- Meadow
- Agricultural
- Barren
- Brush
- Meadow
- 10-foot Contour
- 2-foot Contour
- State Road Centerline

NAD 1983 UTM 17N (feet)

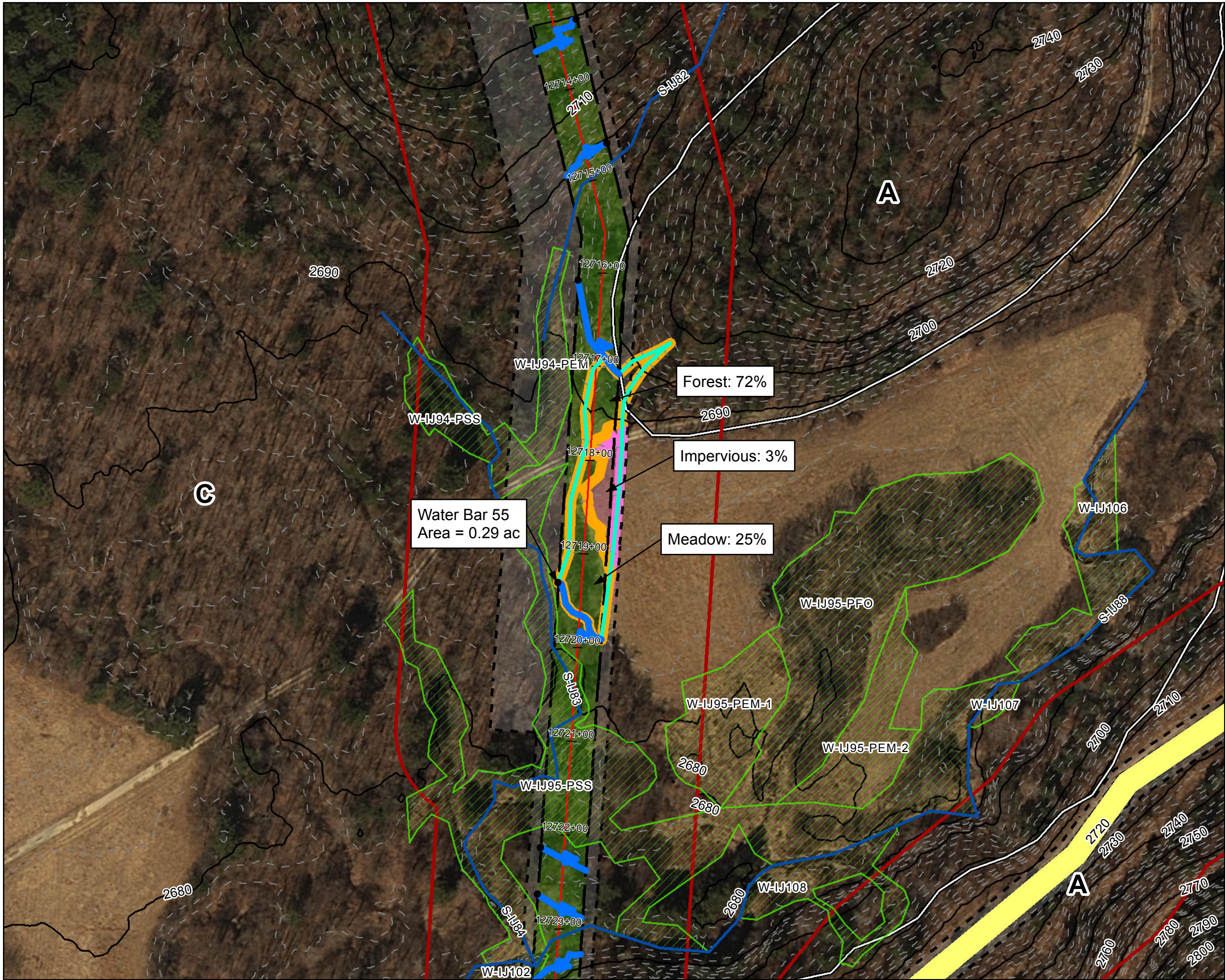
1 in = 100 feet

100 50 0 100 Feet

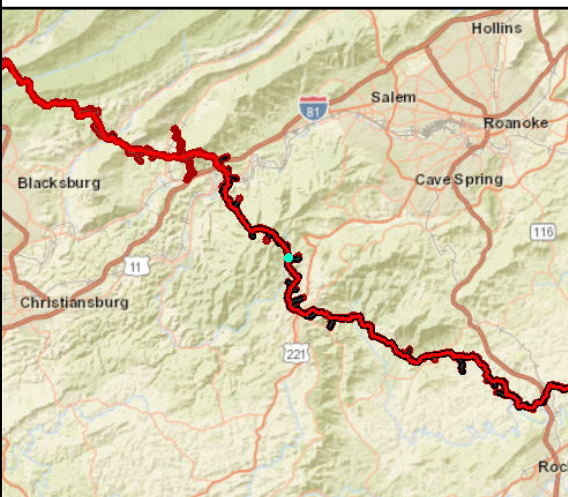
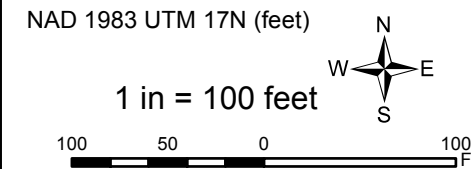
Mountain Valley Pipeline Project

Stormwater Drainage Exhibits
Water Bar 42
Spread 10
Figure 004
Roanoke County, Virginia
March, 2018

Data Sources: Imagery from ESRI Streaming Data 2014, Delineated streams surveyed by Tetra Tech Inc. 2014 to 2017, Transportation data from VITA map layer 2016, Elevation data derived from LIDAR provided by EQT 2016, Soils from NRCS Gridded Soil Survey Geographic (SSURGO) database 2014, Land Use digitized from ESRI World Imagery 2015, Agricultural Area from National Land Cover Dataset 2011.



- Legend**
- Approximate Location of Water Bar End Treatment
 - Permanent Water Bar 10-ft End Treatment
 - Permanent Water Bar 15-ft End Treatment
 - Permanent Water Bar 20-ft End Treatment
 - Sheetflow
 - Shallow Concentrated Flow
 - Streams
 - Stationing
 - Alignment Centerline
 - Permanent Easement
 - Limit of Disturbance
 - MLV Site
 - Access Road Permanent Easement
 - Existing Impervious
 - Surveyed Road Edge
 - New/Proposed Impervious Road Edge
 - Water Bar Drainage Area
 - 100-year Floodplain
 - Pond
 - Wetland
 - Hydrologic Soil Groups
 - 100 ft Buffer off of Limits of Disturbance
 - Agricultural
 - Forest
 - Impervious
 - Meadow
 - Agricultural
 - Barren
 - Brush
 - Meadow
 - 10-foot Contour
 - 2-foot Contour
 - State Road Centerline



Mountain Valley Pipeline Project

Mountain Valley PIPELINE

Stormwater Drainage Exhibits

Water Bar 55

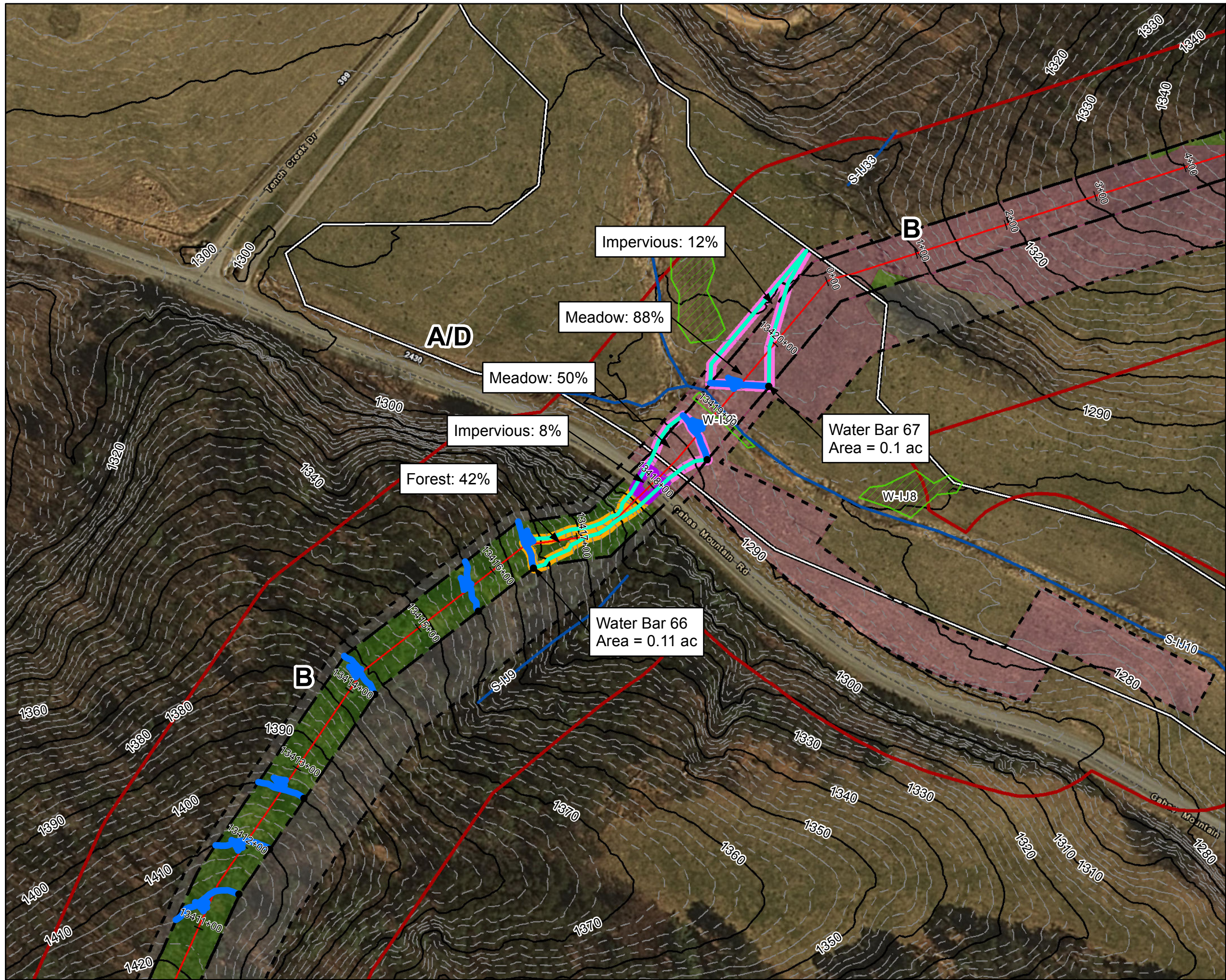
Spread 10

Figure 005

Roanoke County, Virginia

March, 2018

Data Sources: Imagery from ESRI Streaming Data 2014, Delineated streams surveyed by Tetra Tech Inc. 2014 to 2017, Transportation data from VITA map layer 2016, Elevation data derived from LIDAR provided by EQT 2016, Soils from NRCS Gridded Soil Survey Geographic (SSURGO) database 2014, Land Use digitized from ESRI World Imagery 2015, Agricultural Area from National Land Cover Dataset 2011.



Legend

- Approximate Location of Water Bar End Treatment
- Permanent Water Bar 10-ft End Treatment
- Permanent Water Bar 15-ft End Treatment
- Permanent Water Bar 20-ft End Treatment
- Sheetflow
- Shallow Concentrated Flow
- Streams
- Stationing
- Alignment Centerline
- Permanent Easement
- Limit of Disturbance
- MLV Site
- Access Road Permanent Easement
- Existing Impervious
- New/Proposed Impervious Road Edge
- Water Bar Drainage Area
- 100-year Floodplain
- Pond
- Wetland
- Hydrologic Soil Groups
- 100 ft Buffer off of Limits of Disturbance
- Agricultural
- Forest
- Impervious
- Meadow
- Agricultural
- Barren
- Brush
- Meadow
- 10-foot Contour
- 2-foot Contour
- State Road Centerline

NAD 1983 UTM 17N (feet)

1 in = 100 feet

Mountain Valley Pipeline Project

Mountain Valley PIPELINE

Stormwater Drainage Exhibits

Water Bar 66

Spread 10

Figure 006

Franklin County, Virginia

March, 2018

Data Sources: Imagery from ESRI Streaming Data 2014, Delineated streams surveyed by Tetra Tech Inc. 2014 to 2017, Transportation data from VITA map layer 2016, Elevation data derived from LIDAR provided by EQT 2016, Soils from NRCS Gridded Soil Survey Geographic (SSURGO) database 2014, Land Use digitized from ESRI World Imagery 2015, Agricultural Area from National Land Cover Dataset 2011.

