

MVP Variance Request Form



Variance Request
No.: A-13

Date Approval Requested by Contractor: 6/8/2018

Date Submitted by Chief Inspector to LEI:

Date Received by FERC:

FERC Approval Reference No.:

Requested By: Brett Ladd

Spread: A

Variance Type: WS

Request Prepared By *: Megan Neylon

Variance Sequence Number: 013

* The FERC compliance monitor should be alerted and given a copy of the draft variance for review prior to submittal.

Location (Use either Station or Milepost)

Station: 1180+00

To: 1190+00

Milepost: 22.20

To: 22.30

Alignment Sheet Number: 23-24

Tract No.: WV-HA-080

Current Land Use/ Vegetative Cover: pasture

Other Agency Jurisdiction: N/A

Nearby Features (Water body, T&E Habitat, Wetland, Noxious Weed Area, Residence (distance), Cultural Resource Site (distance) etc.):

- ☐ Noxious Weed Area ☐ Raptor Nest ☐ Residence (Distance)
☐ T/E Species Habitat ☐ Cultural Resource Site ☐ Water Well
☐ Other (Specify): N/A

In or w/in 50' of a wetland: ☐ Yes ☒ No

In or w/in 50' of a waterbody: ☐ Yes ☒ No

Wetland or Waterbody ID: N/A

N/A

Additional Stream footage impacted: 0.00

Additional Wetland impacts: 0.00

Net acreage affected: + 1.59

Tree Clearing Required: No

Acreage of tree clearing: 0.00

Variance Level: ☐ Level 1 ☐ Level 2 ☒ Level 3

Variance From: ☒ Permit ☐ Plan ☐ Procedures ☐ EPPM ☐ Specification ☐ Drawing ☐ Mitigation Measure
☐ Line List ☐ Other: Describe:

Detailed Description of Variance: Attachments? ☒ Yes ☐ No Photos? ☐ Yes ☒ No

This variance adds MVP-ATWS-SM-006, MVP-ATWS-SM-005, and MVP-ATWS-SM-004 for slip remediation along access road MVP-HA-029. The requested ATWSs are necessary to repair existing slides that are located on and off of the current access road LOD. The slides are pre-existing and will require repair after construction activities to provide stable slopes adjacent to the ROW and on the access road. No rare, threatened or endangered species, wetland or waterbodies or cultural resources were identified during site delineations. This variance requests a 1.59 acre increase in LOD. No tree clearing is needed in the construction of this variance.

List Attachments: Attachment 1 - Alignment Sheet; Attachment 2 - Rare, Threatened, and Endangered Species Report; Attachment 3 - Stream and Wetland Delineation Report; Attachment 4 - Cultural Resource Reports and Concurrences (CUI//PRIV -- DO NOT RELEASE); Attachment 5 - Landowner Exhibits (CUI//PRIV -- DO NOT RELEASE); Attachment 6 - Variance Request Map

Variance Justification:

Resources have been avoided to the extent practicable. Per approved Project plans, BMPs will be installed to minimize impacts to any Environmentally Sensitive Areas within/abutting the area.

For MVP Use Only			
Additional Surveys Required		Surveyed Corridor Description	Additional Surveys Completed
Cultural Survey	<input checked="" type="checkbox"/> Yes <input type="checkbox"/> No	The locations for this variance request were evaluated for cultural resources, waterbodies and wetlands, threatened and endangered species, and habitat. See the attached cover page list of reports.	<input checked="" type="checkbox"/> Yes <input type="checkbox"/> No
T & E Survey	<input checked="" type="checkbox"/> Yes <input type="checkbox"/> No		<input checked="" type="checkbox"/> Yes <input type="checkbox"/> No
Waterbodies/Wetlands	<input checked="" type="checkbox"/> Yes <input type="checkbox"/> No		<input checked="" type="checkbox"/> Yes <input type="checkbox"/> No
Proof of Previous Biological and Cultural Survey Clearance			
See attachments 2 and 3 that describe rare, threatened, and endangered species surveys and stream and wetland delineations. USFWS Biological Opinion was issued on 10/31/2017. The cultural resources survey was reported in: Mountain Valley Pipeline Project, Cultural Resource Survey, Volume I, Wetzel, Harrison, and Doddridge Counties, West Virginia (Espino et al. September 2015); Mountain Valley Pipeline Project, Cultural Resource Survey, Addendum 1 to Volume I, Wetzel, Harrison, and Doddridge Counties, West Virginia (Espino et al. November 2016); Mountain Valley Pipeline Project, Variances Laydown Yard MVP-LY-061A, Workspaces MVP-ATWS-SM-004, MVP-ATWS-SM-005, and Access Road MVP-MLV-VAR-12 (Freedman June 2018). Filed with FERC 9/12/2015; 12/22/2016; 6/11/2018. Clearance received from WVDCH 10/6/2015; 12/7/2016; 6/11/2018. The Concurrence Letter is provided in Attachment 4.			
Landowner:		REDACTED	
Land Agent Contact		JANNA ARNOLD	
Landowner Approval Obtained		<input checked="" type="checkbox"/> Yes <input type="checkbox"/> No	
Sign Off:	Name	Signature	Date
Construction Manager	Brent Ladd	<i>Brent Ladd</i>	7/25/2018
Lead Environmental Inspector	Travis Huskins	<i>Travis Huskins</i>	7/25/2018
Third Party Compliance Manager or monitor			7/25/2018
ROW Land Agent *	Janna Arnold	<i>Janna Arnold</i>	7/25/2018
Environmental Supervisor	Megan Neylon	<i>Megan Neylon</i>	7/25/2018
*signature denotes confirmed landowner approval			

For FERC Compliance Monitor and Compliance Manager Use Only

Variance Approved:		Variance Denied:		Beyond Authority:	
Signature:					
Date:					
Stipulations:					

--	--	--	--	--	--

Spread No.:	A	Variance Request No.:	A-13
-------------	---	-----------------------	------

VARIANCE CONDITIONS

Name:		Title:		Organization:	
-------	--	--------	--	---------------	--

Conditions:

Name:	Title:	Organization:
-------	--------	---------------

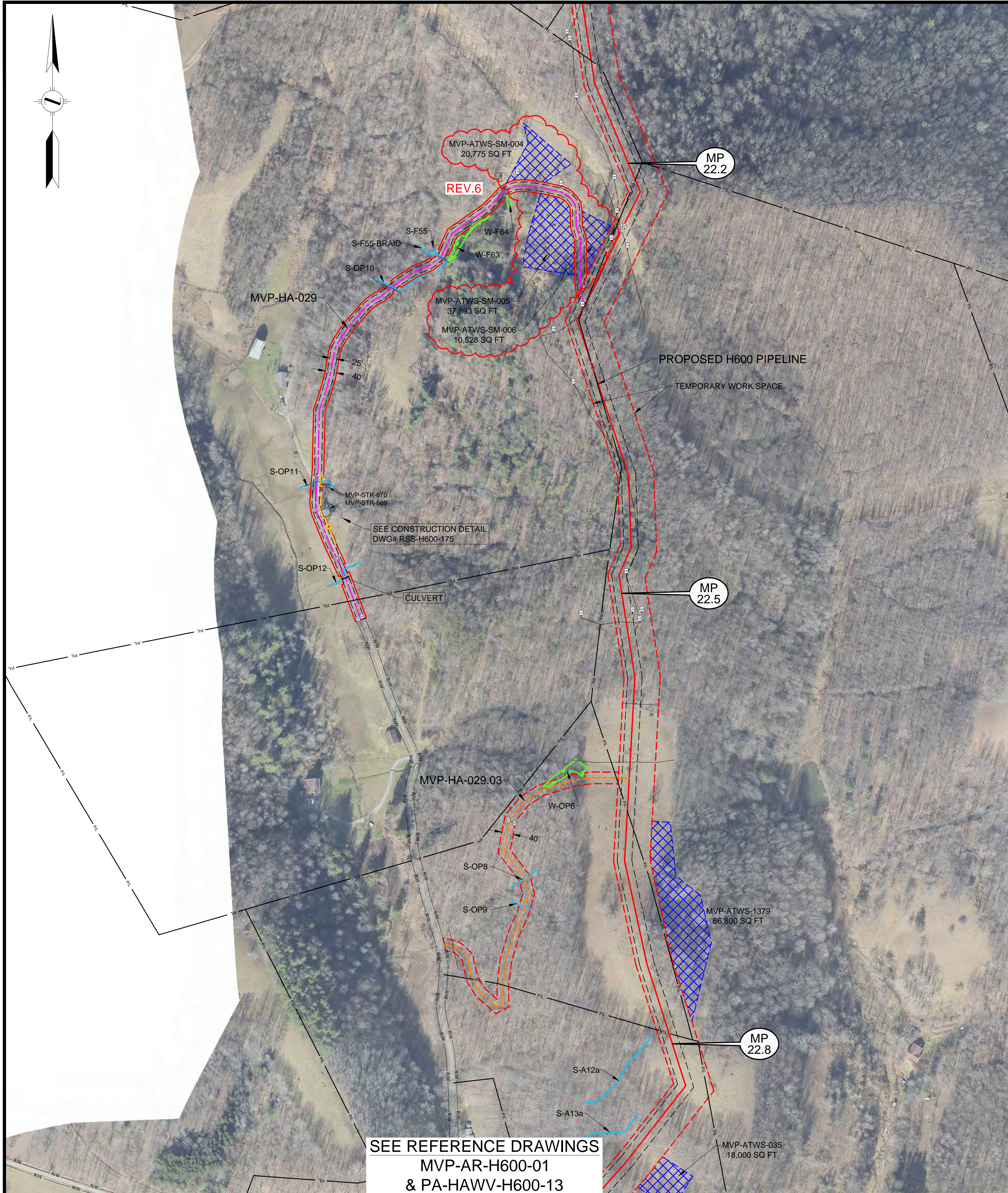
Conditions:

Name:	Title:	Organization:
-------	--------	---------------

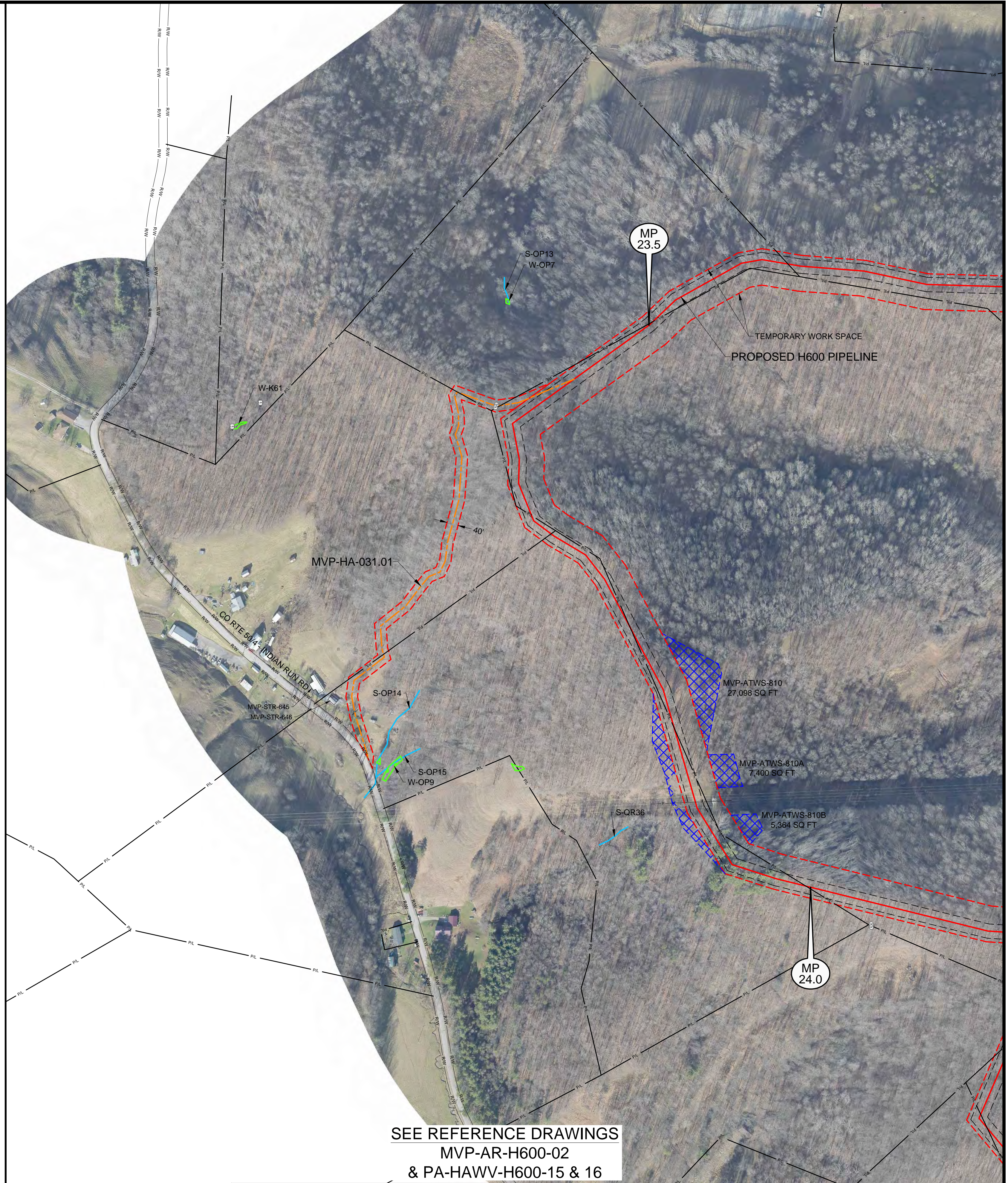
Conditions:

**Mountain Valley Pipeline, LLC
Mountain Valley Pipeline Project
Docket No. CP16-10-000**

**Alignment Sheets
Attachment 1**



SEE REFERENCE DRAWINGS
MVP-AR-H600-01
& PA-HAWV-H600-13



SEE REFERENCE DRAWINGS
MVP-AR-H600-02
& PA-HAWV-H600-15 & 16

LEGEND		REFERENCE DRAWINGS		REVISIONS		APPROVED FOR FERC		APPROVED FOR BIDDING		APPROVED FOR CONSTRUCTION		MOUNTAIN VALLEY PIPELINE				
PERMANENT ACCESS ROAD	TEMPORARY ACCESS ROAD	DRAWING NUMBER	TITLE	REV.	BY	DATE	DESCRIPTION	REV.	BY	DATE	DESCRIPTION	REV.	BY	DATE	DESCRIPTION	
PROPOSED H600 PIPELINE	PROPOSED PERMANENT EASEMENT	RSS-H600-175	RESIDENTIAL SITE SPECIFIC	0	DRF	10-15-15	REV 4.0.0. ISSUED TO FERC	0	RRR	10-15-15	3	RRR	09-03-16	5	JJS	11-27-17
TEMPORARY WORK SPACE	ADDITIONAL TEMPORARY WORK SPACE	MVP-AR-H600-02	OVERALL QUAD MAP	1	DRF	01-13-16	FERC DATA REQUEST No.1	4	RRR	10-14-16						
STUDY CORRIDOR		PA-HAWV-H600-14	ALIGNMENT SHEET	2	DRF	04-21-16	FERC DATA REQUEST No.2	5	JJS	11-27-17						
WETLAND		PA-HAWV-H600-15	ALIGNMENT SHEET	3	DRF	09-03-16	REV 4.1.13 ISSUED FOR BID									
PROPERTY LINE		PA-HAWV-H600-16	ALIGNMENT SHEET	4	DRF	10-14-16	OCTOBER 2016 PROPOSED ROUTE - ISSUED TO FERC									
ROAD RIGHT-OF-WAY LINE				5	DRF	11-27-17	ISSUED FOR CONSTRUCTION									
GATE - GATE POST				6	DRF	07-09-18	ISSUED FOR VARIANCE - ADDED MVP-ATWS-SM-004, 005 & 006									
CULVERT																
PIPELINE MARKER																
OVERHEAD POWER LINE																

HOLLAND ENGINEERING

220 Hoover Boulevard, Suite 2
Holland, Michigan 49423-3766
T 616-392-5938 F 616-392-2116

28555 Evergreen Rd., Suite. 430
Southfield, Michigan 48076
T 248-827-7322 F 248-827-7549

www.hollandengineering.com

HORIZ. SCALE: 1" = 200'	
DRAWN BY: HEI(DRF)	
04/22/15	
DRAFTING CK:	
ENGINEERING CK:	
UEI JOB NO.:	
AFE/P.O. NO.:	
HEI PROJECT NO.: 14-10-052	
UEI FILE NO.:	
DRAWING NO.: MVP-ADAR-H600-09	
SHEET 9 OF 109 REV. 6	
DATE OF PLOT: 7/9/18 5:17 PM	

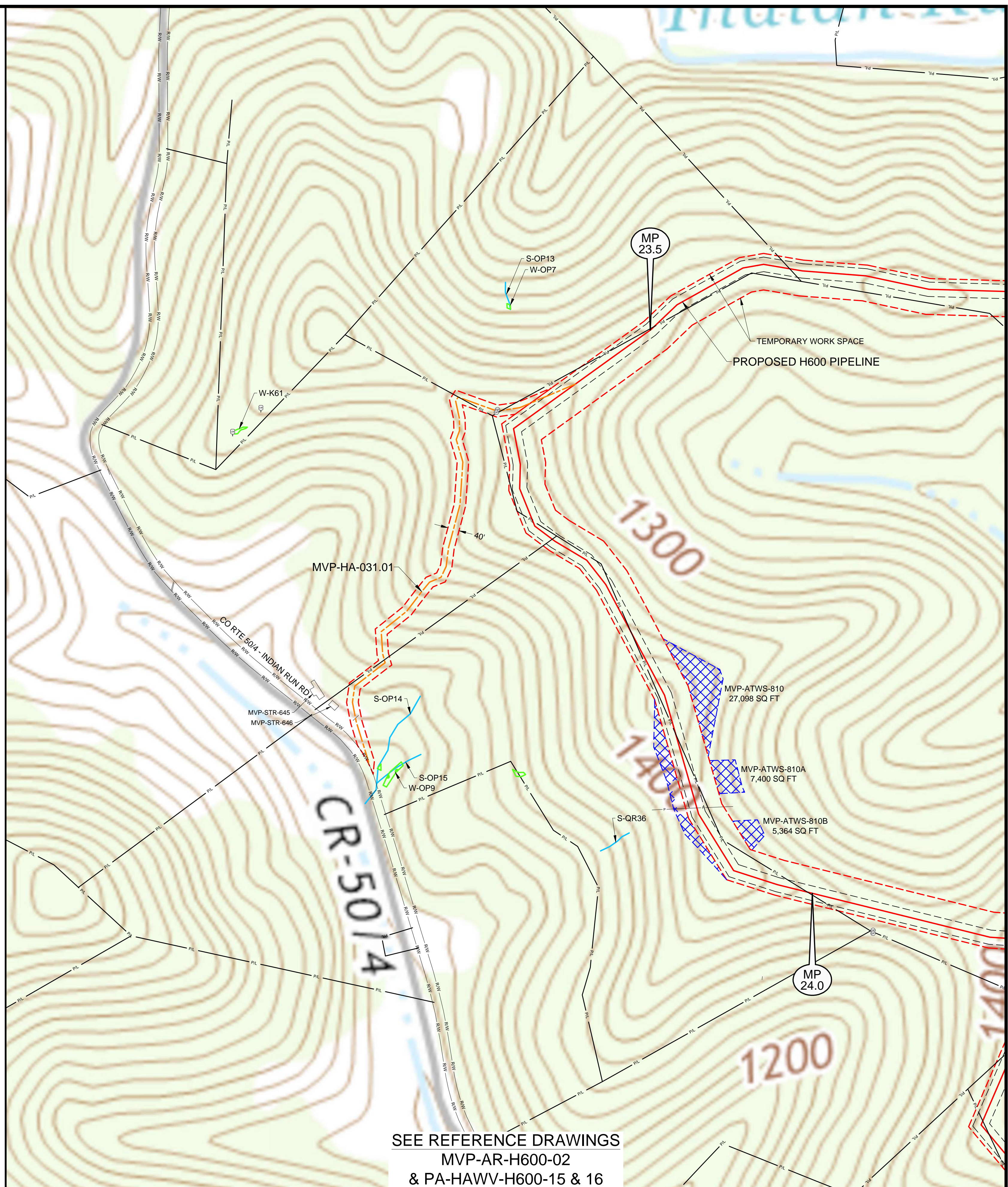
Mountain Valley PIPELINE

AERIAL DETAILS

PROPOSED ACCESS ROADS

MVP PIPELINE PROJECT - H600 LINE

HARRISON COUNTY, WEST VIRGINIA



<div>LEGEND</div> <div><div><div><div><div></div></div><div></div></div><div><div><div></div></div><div></div></div><div><div><div></div></div><div></div></div><div><div><div></div></div><div></div></div><div><div><div></div></div><div></div></div><div><div><div></div></div><div></div></div><div><div><div></div></div><div></div></div><div><div><div></div></div><div></div></div><div><div><div></div></div><div></div></div><div><div><div></div></div><div></div></div><div><div><div></div></div><div></div></div><div><div><div></div></div><div></div></div><div><div><div></div></div><div></div></div><div><div><div></div></div><div></div></div><div><div><div></div></div><div></div></div><div><div><div></div></div><div></div></div><div><div><div></div></div><div></div></div><div><div><div></div></div><div></div></div><div><div><div></div></div><div></div></div><div><div><div></div></div><div></div></div><div><div><div></div></div><div></div></div><div><div><div></div></div><div></div></div><div><div><div></div></div><div></div></div><div><div><div></div></div><div></div></div><div><div><div></div></div><div></div></div><div><div><div></div></div><div></div></div><div><div><div></div></div><div></div></div><div><div><div></div></div><div></div></div><div><div><div></div></div><div></div></div><div><div><div></div></div><div></div></div><div><div><div></div></div><div></div></div><div><div><div></div></div><div></div></div><div><div><div></div></div><div></div></div><div><div><div></div></div><div></div></div><div><div><div></div></div><div></div></div><div><div><div></div></div><div></div></div><div><div><div></div></div><div></div></div><div><div><div></div></div><div></div></div><div><div><div></div></div><div></div></div><div><div><div></div></div><div></div></div><div><div><div></div></div><div></div></div><div><div><div></div></div><div></div></div><div><div><div></div></div><div></div></div><div><div><div></div></div><div></div></div><div><div><div></div></div><div></div></div><div><div><div></div></div><div></div></div><div><div><div></div></div><div></div></div><div><div><div></div></div><div></div></div><div><div><div></div></div><div></div></div><div><div><div></div></div><div></div></div><div><div><div></div></div><div></div></div><div><div><div></div></div><div></div></div><div><div><div></div></div><div></div></div><div><div><div></div></div><div></div></div><div><div><div></div></div><div></div></div><div><div><div></div></div><div></div></div><div><div><div></div></div><div></div></div><div><div><div></div></div><div></div></div><div><div><div></div></div><div></div></div><div><div><div></div></div><div></div></div><div><div><div></div></div><div></div></div><div><div><div></div></div><div></div></div><div><div><div></div></div><div></div></div><div><div><div></div></div><div></div></div><div><div><div></div></div><div></div></div><div><div><div></div></div><div></div></div><div><div><div></div></div><div></div></div><div><div><div></div></div><div></div></div><div><div><div></div></div><div></div></div><div><div><div></div></div><div></div></div><div><div><div></div></div><div></div></div><div><div><div></div></div><div></div></div><div><div><div></div></div><div></div></div><div><div><div></div></div><div></div></div><div><div><div></div></div><div></div></div><div><div><div></div></div><div></div></div><div><div><div></div></div><div></div></div><div><div><div></div></div><div></div></div><div><div><div></div></div><div></div></div><div><div><div></div></div><div></div></div><div><div><div></div></div><div></div></div><div><div><div></div></div><div></div></div><div><div><div></div></div><div></div></div><div><div><div></div></div><div></div></div><div><div><div></div></div><div></div></div><div><div><div></div></div><div></div></div><div><div><div></div></div><div></div></div><div><div><div></div></div><div></div></div><div><div><div></div></div><div></div></div><div><div><div></div></div><div></div></div><div><div><div></div></div><div></div></div><div><div><div></div></div><div></div></div><div><div><div></div></div><div></div></div><div><div><div></div></div><div></div></div><div><div><div></div></div><div></div></div><div><div><div></div></div><div></div></div><div><div><div></div></div><div></div></div><div><div><div></div></div><div></div></div><div><div><div></div></div><div></div></div><div><div><div></div></div><div></div></div><div><div><div></div></div><div></div></div><div><div><div></div></div><div></div></div><div><div><div></div></div><div></div></div><div><div><div></div></div><div></div></div><div><div><div></div></div><div></div></div><div><div><div></div></div><div></div></div><div><div><div></div></div><div></div></div><div><div><div></div></div><div></div></div><div><div><div></div></div><div></div></div><div><div><div></div></div><div></div></div><div><div><div></div></div><div></div></div><div><div><div></div></div><div></div></div><div><div><div></div></div><div></div></div><div><div><div></div></div><div></div></div><div><div><div></div></div><div></div></div><div><div><div></div></div><div></div></div><div><div><div></div></div><div></div></div><div><div><div></div></div><div></div></div><div><div><div></div></div><div></div></div><div><div><div></div></div><div></div></div><div><div><div></div></div><div></div></div><div><div><div></div></div><div></div></div><div><div><div></div></div><div></div></div><div><div><div></div></div><div></div></div><div><div><div></div></div><div></div></div><div><div><div></div></div><div></div></div><div><div><div></div></div><div></div></div><div><div><div></div></div><div></div></div><div><div><div></div></div><div></div></div><div><div><div></div></div><div></div></div><div><div><div></div></div><div></div></div><div><div><div></div></div><div></div></div><div><div><div></div></div><div></div></div><div><div><div></div></div><div></div></div><div><div><div></div></div><div></div></div><div><div><div></div></div><div></div></div><div><div><div></div></div><div></div></div><div><div><div></div></div><div></div></div><div><div><div></div></div><div></div></div><div><div><div></div></div><div></div></div><div><div><div></div></div><div></div></div><div><div><div></div></div><div></div></div><div><div><div></div></div><div></div></div><div><div><div></div></div><div></div></div><div><div><div></div></div><div></div></div><div><div><div></div></div><div></div></div><div><div><div></div></div><div></div></div><div><div><div></div></div><div></div></div><div><div><div></div></div><div></div></div><div><div><div></div></div><div></div></div><div><div><div></div></div><div></div></div><div><div><div></div></div><div></div></div><div><div><div></div></div><div></div></div><div><div><div></div></div><div></div></div><div><div><div></div></div><div></div></div><div><div><div></div></div><div></div></div><div><div><div></div></div><div></div></div><div><div><div></div></div><div></div></div><div><div><div></div></div><div></div></div><div><div><div></div></div><div></div></div><div><div><div></div></div><div></div></div><div><div><div></div></div><div></div></div><div><div><div></div></div><div></div></div><div><div><div></div></div><div></div></div><div><div><div></div></div><div></div></div><div><div><div></div></div><div></div></div><div><div><div></div></div><div></div></div><div><div><div></div></div><div></div></div><div><div><div></div></div><div></div></div><div><div><div></div></div><div></div></div><div><div><div></div></div><div></div></div><div><div><div></div></div><div></div></div><div><div><div></div></div><div></div></div><div><div><div></div></div><div></div></div><div><div><div></div></div><div></div></div><div><div><div></div></div><div></div></div><div><div><div></div></div><div></div></div><div><div><div></div></div><div></div></div><div><div><div></div></div><div></div></div><div><div><div></div></div><div></div></div><div><div><div></div></div><div></div></div><div><div><div></div></div><div></div></div><div><div><div></div></div><div></div></div><div><div><div></div></div><div></div></div><div><div><div></div></div><div></div></div><div><div><div></div></div><div></div></div><div><div><div></div></div><div></div></div><div><div><div></div></div><div></div></div><div><div><div></div></div><div></div></div><div><div><div></div></div><div></div></div><div><div><div></div></div><div></div></div><div><div><div></div></div><div></div></div><div><div><div></div></div><div></div></div><div><div><div></div></div><div></div></div><div><div><div></div></div><div></div></div><div><div><div></div></div><div></div></div><div><div><div></div></div><div></div></div><div><div><div></div></div><div></div></div><div><div><div></div></div><div></div></div><div><div><div></div></div><div></div></div><div><div><div></div></div><div></div></div><div><div><div></div></div><div></div></div><div><div><div></div></div><div></div></div><div><div><div></div></div><div></div></div><div><div><div></div></div><div></div></div><div><div><div></div></div><div></div></div><div><div><div></div></div><div></div></div><div><div><div></div></div><div></div></div><div><div><div></div></div><div></div></div><div><div><div></div></div><div></div></div><div><div><div></div></div><div></div></div><div><div><div></div></div><div></div></div><div><div><div></div></div><div></div></div><div><div><div></div></div><div></div></div><div><div><div></div></div><div></div></div><div><div><div></div></div><div></div></div><div><div><div></div></div><div></div></div><div><div><div></div></div><div></div></div><div><div><div></div></div><div></div></div><div><div><div></div></div><div></div></div><div><div><div></div></div><div></div></div><div><div><div></div></div><div></div></div><div><div><div></div></div><div></div></div><div><div><div></div></div><div></div></div><div><div><div></div></div><div></div></div><div><div><div></div></div><div></div></div><div><div><div></div></div><div></div></div><div><div><div></div></div><div></div></div><div><div><div></div></div><div></div></div><div><div><div></div></div><div></div></div><div><div><div></div></div><div></div></div><div><div><div></div></div><div></div></div><div><div><div></div></div><div></div></div><div><div><div></div></div><div></div></div><div><div><div></div></div><div></div></div><div><div><div></div></div><div></div></div><div><div><div></div></div><div></div></div><div><div><div></div></div><div></div></div><div><div><div></div></div><div></div></div><div><div><div></div></div><div></div></div><div><div><div></div></div><div></div></div><div><div><div></div></div><div></div></div><div><div><div></div></div><div></div></div><div><div><div></div></div><div></div></div><div><div><div></div></div><div></div></div><div><div><div></div></div><div></div></div><div><div><div></div></div><div></div></div><div><div><div></div></div><div></div></div><div><div><div></div></div><div></div></div><div><div><div></div></div><div></div></div><div><div><div></div></div><div></div></div><div><div><div></div></div><div></div></div><div><div><div></div></div><div></div></div><div><div><div></div></div><div></div></div><div><div><div></div></div><div></div></div><div><div><div></div></div><div></div></div><div><div><div></div></div><div></div></div><div><div><div></div></div><div></div></div><div><div><div></div></div><div></div></div><div><div><div></div></div><div></div></div><div><div><div></div></div><div></div></div><div><div><div></div></div><div></div></div><div><div><div></div></div><div></div></div><div><div><div></div></div><div></div></div><div><div><div></div></div><div></div></div><div><div><div></div></div><div></div></div><div><div><div></div></div><div></div></div><div><div><div></div></div><div></div></div><div><div><div></div></div><div></div></div><div><div><div></div></div><div></div></div><div><div><div></div></div><div></div></div><div><div><div></div></div><div></div></div><div><div><div></div></div><div></div></div><div><div><div></div></div><div></div></div><div><div><div></div></div><div></div></div><div><div><div></div></div><div></div></div><div><div><div></div></div><div></div></div><div><div><div></div></div><div></div></div><div><div><</div></div></div></div>	
--	--

**Mountain Valley Pipeline, LLC
Mountain Valley Pipeline Project
Docket No. CP16-10-000**

**Rare, Threatened, and Endangered Species Report
Attachment 2**

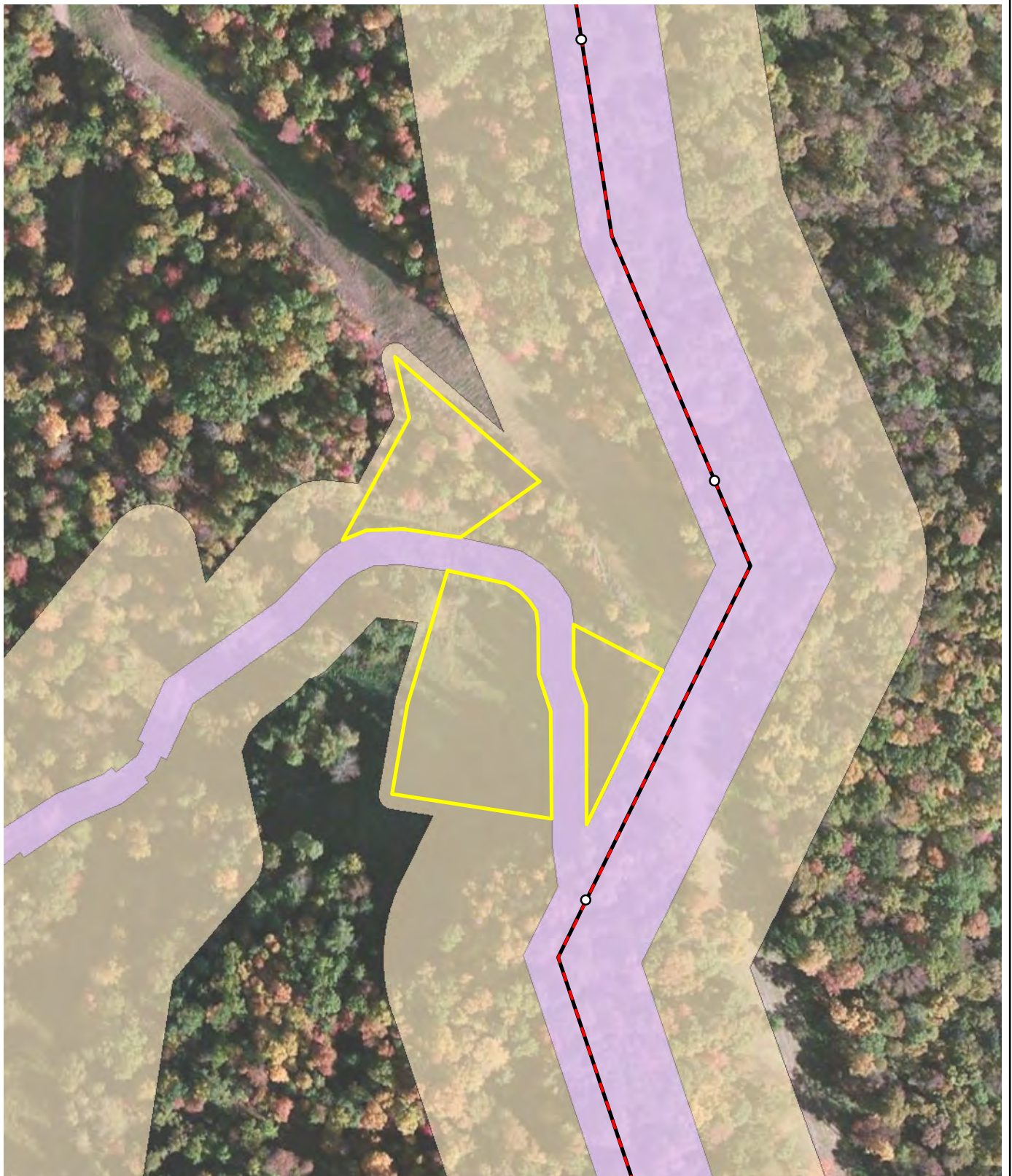
Mountain Valley Pipeline Project
Variance A-13
July 5, 2018


State and federal agencies identified areas where plant surveys were required. This variance does not occur in any of those areas.

There are no impacts to aquatic resources associated with this variance.

The only avian species-specific presence-absence surveys required for the project are scrub-shrub habitat-specific in the state of Virginia, thus do not apply to this variance area.

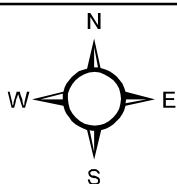
On 11/17/2015 and 06/12/2018, Environmental Solutions and Innovations, Inc. (ESI) conducted field surveys to search for portal openings (winter bat habitat). Surveys were conducted in accordance with agency approved protocols for the project. No portal openings were observed in the variance area.



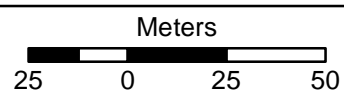
 MVP Variance

 ESI Portal Coverage

 MVP LOD (20171127)



Mountain Valley Pipeline Variance Survey Exhibit; Variance A-13



Base Map: ESRI "World Imagery (Clarity)";
accessed 7/5/2018

**Mountain Valley Pipeline, LLC
Mountain Valley Pipeline Project
Docket No. CP16-10-000**

**Waterbodies and Wetlands Report
Attachment 3**

Mountain Valley Pipeline Project

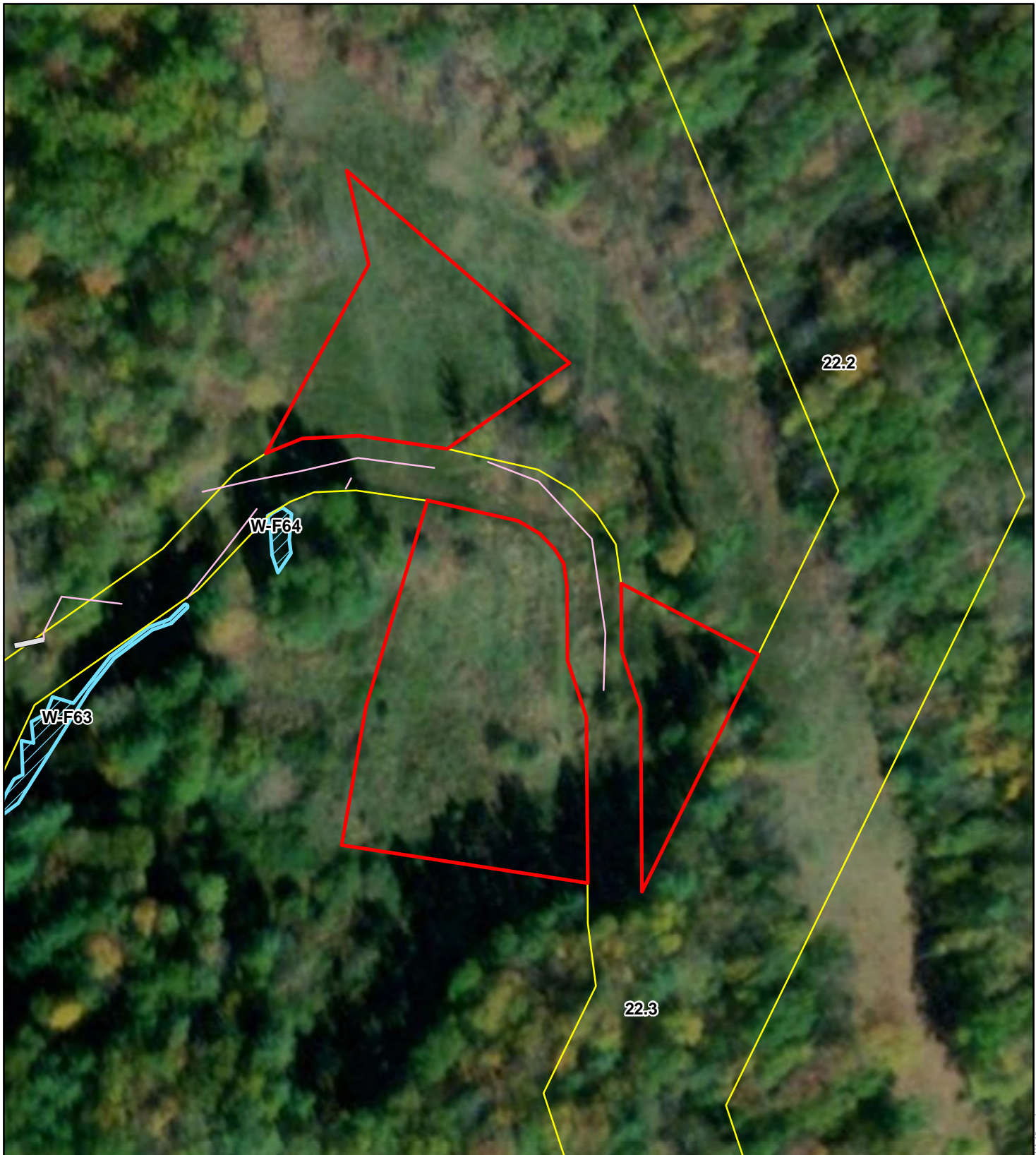
Variance A-13


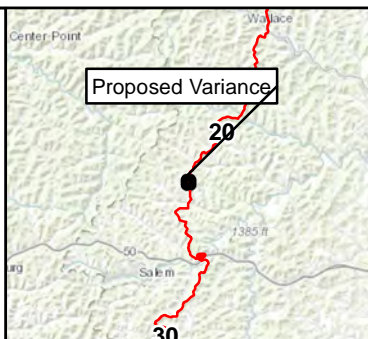
July 3, 2018

On June 9, 2018, Tetra Tech, Inc. (Tetra Tech) surveyed the proposed variance in Wetzel Co., WV for wetlands and streams. Wetland delineations were conducted utilizing the Routine On-Site Determination Methodology presented in the US Army Corps of Engineers (USACE) Wetland Delineation Manual (Technical Report Y-87-1) and the Regional Supplement to the Corps of Engineers Wetland Delineation Manual: Eastern Mountains and Piedmont Region (Version 2.0).

During field surveys, Tetra Tech did not identify any wetlands or streams in the variance area as shown on the attached figure.

FIGURES



Mountain Valley Pipeline Project  Proposed Variance A-13 <i>Harrison County, West Virginia</i> July 2018		NAD 1983 UTM 17N 1 inch = 100 feet 0 50 100 200 Feet
Legend <div style="display: flex; justify-content: space-around;"> <div> <div style="border: 2px solid red; width: 30px; height: 15px; display: inline-block;"></div> Proposed Variance <div style="border: 2px solid red; width: 30px; height: 15px; display: inline-block;"></div> Limit of Disturbance <div style="border: 2px solid yellow; width: 30px; height: 15px; display: inline-block;"></div> Issued for Construction LOD <div style="border-bottom: 2px solid gray; width: 30px; display: inline-block;"></div> Culvert <div style="border-bottom: 2px solid pink; width: 30px; display: inline-block;"></div> Drainage </div> <div> <div style="border: 2px solid blue; width: 30px; height: 15px; background: repeating-linear-gradient(45deg, transparent, transparent 2px, blue 2px, blue 4px); display: inline-block;"></div> PEM Wetland </div> </div>		
Data Sources: ESRI Streaming Data 2014.		

**Mountain Valley Pipeline, LLC
Mountain Valley Pipeline Project
Docket No. CP16-10-000**

**Pipeline Variance
Request Map
Attachment 6**

