

**Mountain Valley Pipeline, LLC  
Mountain Valley Pipeline Project  
Docket No. CP16-10-000**

**Implementation Plan  
Dated October 2017**

**Attachment IP-32**

## Mier, Jena

---

**From:** Mier, Jena  
**Sent:** Wednesday, July 12, 2017 12:58 PM  
**To:** 'Judy Dunscomb'  
**Cc:** 'Eggerding, Matthew' (MEggerding@eqt.com); 'Neylon, Megan'  
**Subject:** RE: Mountain Valley Pipeline TNC Poor Mountain Easement Crossing  
**Attachments:** MVP Proposed Route(Montgomery).zip; MVP Proposed Route(Roanoke).zip; FEIS figure 3-5-1-14\_Alt 682.pdf; FEIS figure 3-5-1-13\_Poor Mt Variation.pdf; FEIS figure 3-4-2-1\_Major Alternatives.pdf

Judy-

Please find attached the most recent shapefiles for the MVP project within Montgomery and Roanoke Counties. The route variations considered within this specific area, as well as the major project route alternatives, are outlined in the attached figures from the FERC's Final Environmental Impact Statement.

Please contact me directly with any additional questions. Lindsey is no longer with NextEra Energy. Thanks.

*Jena S. Mier, PWS*  
Environmental Services Manager



700 Universe Blvd.  
Juno Beach, FL 33408  
Office 561-691-2209  
Cell 561-339-0621  
[Jena.Mier@nee.com](mailto:Jena.Mier@nee.com)

---

**From:** Judy Dunscomb [<mailto:jdunscomb@TNC.ORG>]  
**Sent:** Monday, July 10, 2017 2:45 PM  
**To:** 'Neylon, Megan'; 'Hesch, Lindsey'; Mier, Jena  
**Cc:** 'Eggerding, Matthew' ([MEggerding@eqt.com](mailto:MEggerding@eqt.com))  
**Subject:** Mountain Valley Pipeline TNC Poor Mountain Easement Crossing

CAUTION - EXTERNAL EMAIL

Dear Megan and Lindsey,

Would it be possible for the Conservancy to receive an updated shapefile of the most current project alignment? We are most interested in the segment that would affect the easement held by the Conservancy over Poor Mountain, along with the route variations that were considered.

Thank you.

Judy

My current work schedule is Monday 9-5; Tuesday - Friday 8:30-2:30

---

**Judy K. Dunscomb**

*Senior Conservation Scientist*

(434) 981-6907 (Mobile)

(434) 951-0573 (Phone)

(434) 817-1768 (Fax)

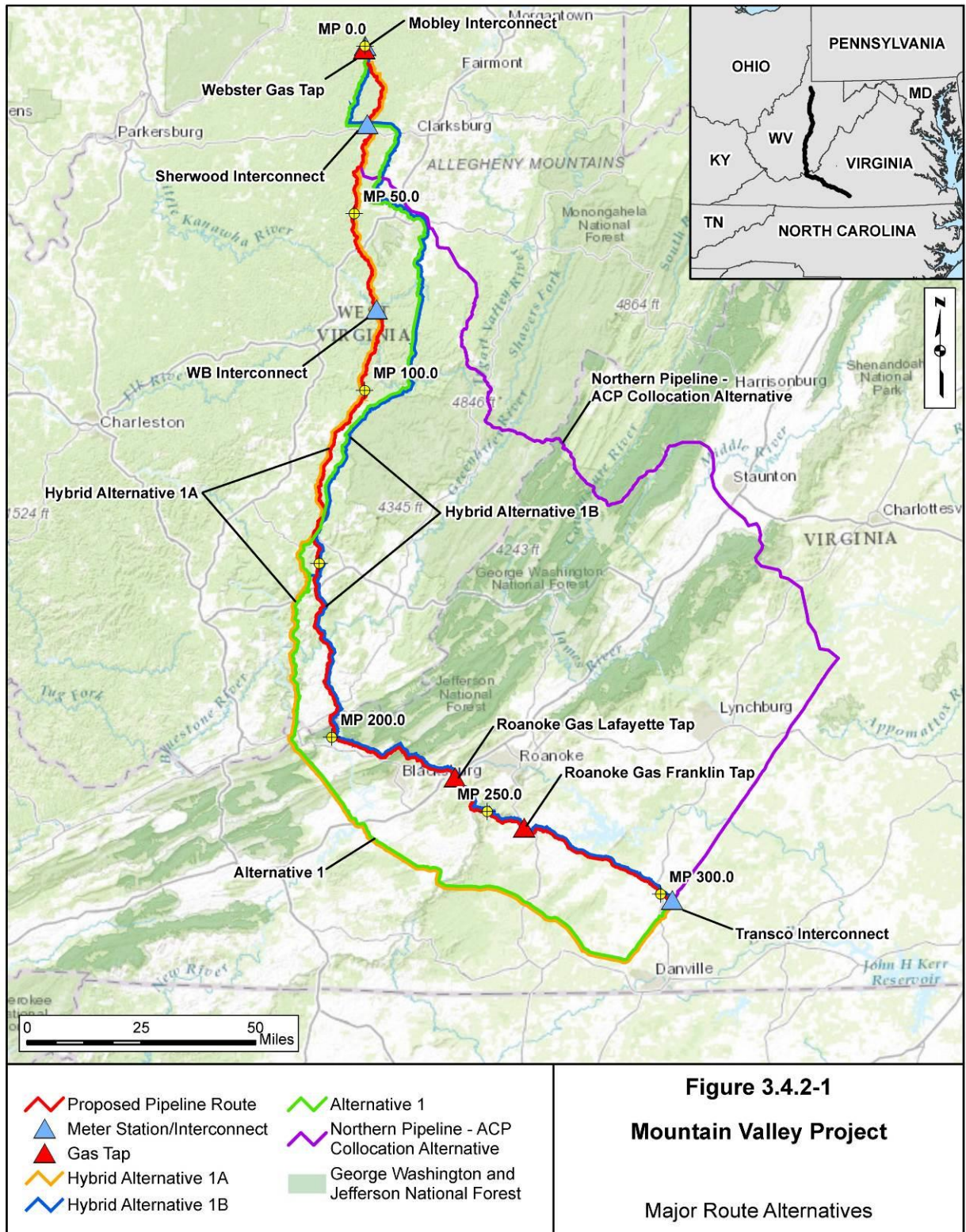
**The Nature Conservancy**

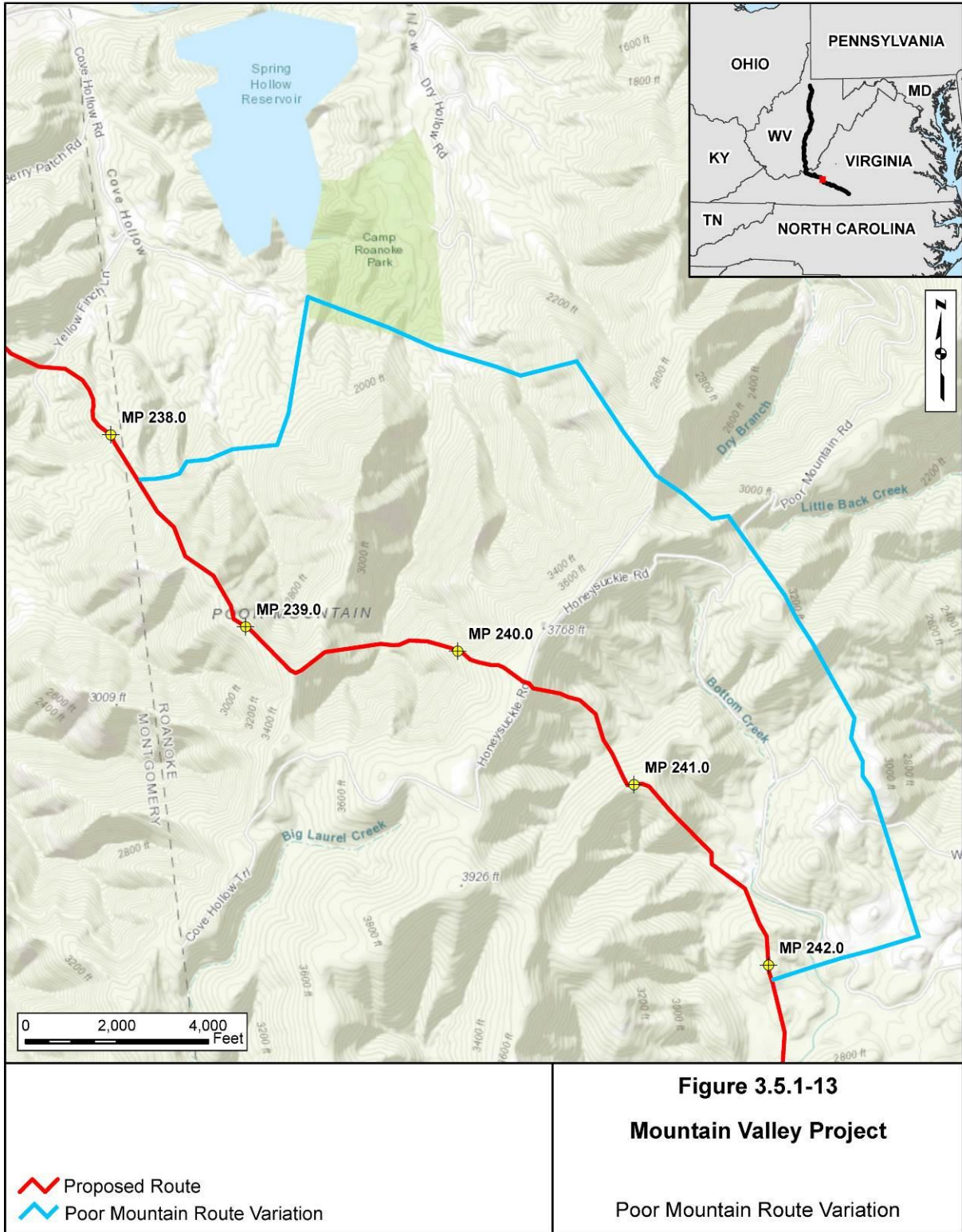
490 Westfield Rd.

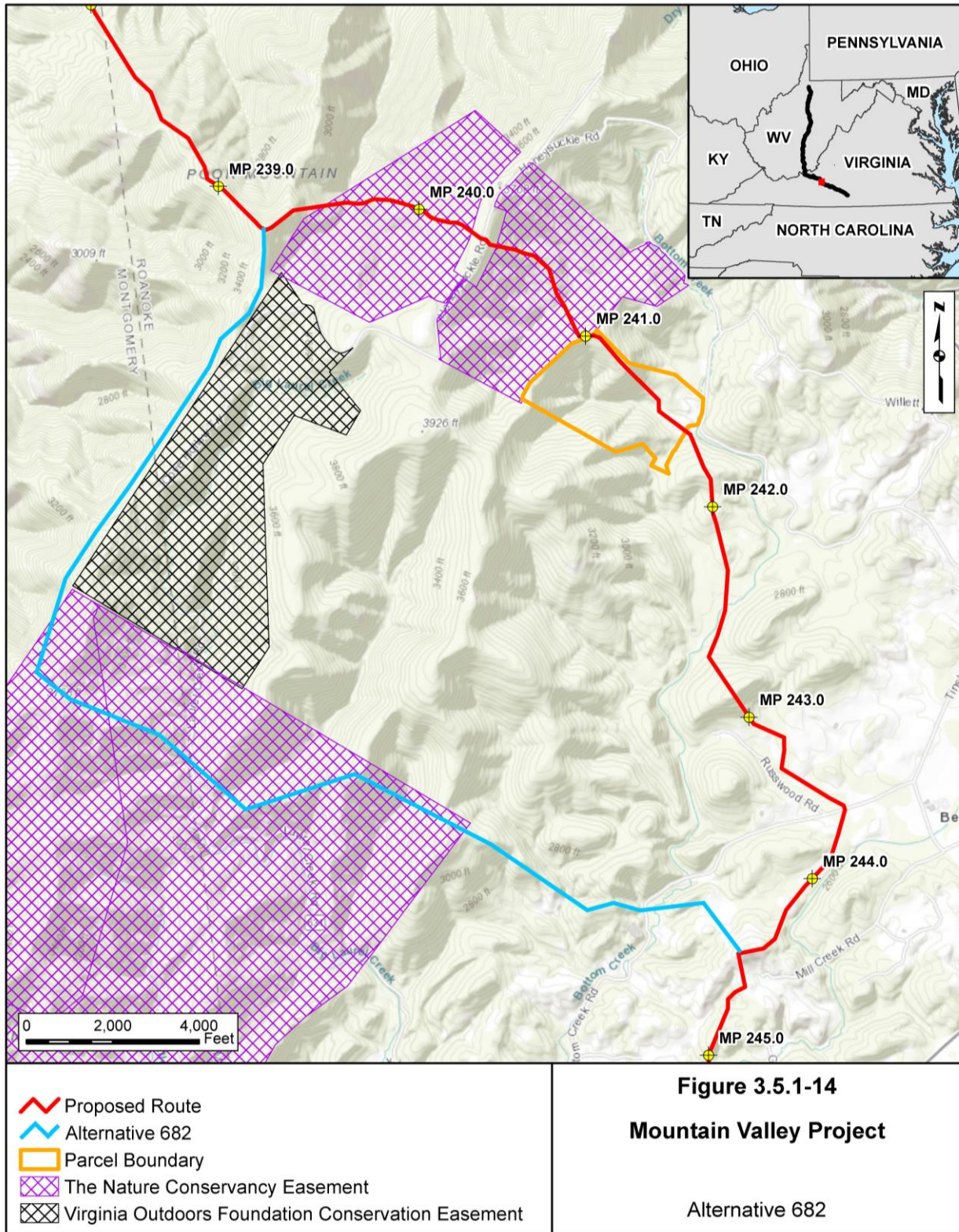
Charlottesville, VA 22901

[nature.org](http://nature.org)









## Mier, Jena

---

**From:** Judy Dunscomb <jdunscomb@TNC.ORG>  
**Sent:** Wednesday, July 12, 2017 3:14 PM  
**To:** Mier, Jena  
**Subject:** RE: Mountain Valley Pipeline TNC Poor Mountain Easement Crossing

Will do!

---

**From:** Mier, Jena [<mailto:Jena.Mier@nexteraenergy.com>]  
**Sent:** Wednesday, July 12, 2017 1:57 PM  
**To:** Judy Dunscomb <[jdunscomb@TNC.ORG](mailto:jdunscomb@TNC.ORG)>  
**Cc:** 'Eggerding, Matthew' ([MEggerding@eqt.com](mailto:MEggerding@eqt.com)) <[MEggerding@eqt.com](mailto:MEggerding@eqt.com)>; 'Neylon, Megan' <[MNeylon@eqt.com](mailto:MNeylon@eqt.com)>  
**Subject:** RE: Mountain Valley Pipeline TNC Poor Mountain Easement Crossing

You're welcome. Let me know if you have any questions.

*Jena S. Mier, PWS*  
Environmental Services Manager



700 Universe Blvd.  
Juno Beach, FL 33408  
Office 561-691-2209  
Cell 561-339-0621  
[Jena.Mier@nee.com](mailto:Jena.Mier@nee.com)

---

**From:** Judy Dunscomb [<mailto:jdunscomb@TNC.ORG>]  
**Sent:** Wednesday, July 12, 2017 1:21 PM  
**To:** Mier, Jena  
**Cc:** 'Eggerding, Matthew' ([MEggerding@eqt.com](mailto:MEggerding@eqt.com)); 'Neylon, Megan'  
**Subject:** RE: Mountain Valley Pipeline TNC Poor Mountain Easement Crossing

Thank you very much Jena for your prompt response.

Regards,  
Judy

My current work schedule is Monday 9-5; Tuesday - Friday 8:30-2:30

---

**Judy K. Dunscomb***Senior Conservation Scientist*

(434) 981-6907 (Mobile)

(434) 951-0573 (Phone)

(434) 817-1768 (Fax)

**The Nature Conservancy**

490 Westfield Rd.

Charlottesville, VA 22901

[nature.org](http://nature.org)

---

**From:** Mier, Jena [<mailto:Jena.Mier@nexteraenergy.com>]**Sent:** Wednesday, July 12, 2017 12:58 PM**To:** Judy Dunscomb <[jdunscomb@TNC.ORG](mailto:jdunscomb@TNC.ORG)>**Cc:** 'Eggerding, Matthew' ([MEggerding@eqt.com](mailto:MEggerding@eqt.com)) <[MEggerding@eqt.com](mailto:MEggerding@eqt.com)>; 'Neylon, Megan' <[MNeylon@eqt.com](mailto:MNeylon@eqt.com)>**Subject:** RE: Mountain Valley Pipeline TNC Poor Mountain Easement Crossing

Judy-

Please find attached the most recent shapefiles for the MVP project within Montgomery and Roanoke Counties. The route variations considered within this specific area, as well as the major project route alternatives, are outlined in the attached figures from the FERC's Final Environmental Impact Statement.

Please contact me directly with any additional questions. Lindsey is no longer with NextEra Energy. Thanks.

*Jena S. Mier, PWS*

Environmental Services Manager



700 Universe Blvd.

Juno Beach, FL 33408

Office 561-691-2209

Cell 561-339-0621

[Jena.Mier@nee.com](mailto:Jena.Mier@nee.com)

---

**From:** Judy Dunscomb [<mailto:jdunscomb@TNC.ORG>]**Sent:** Monday, July 10, 2017 2:45 PM**To:** 'Neylon, Megan'; 'Hesch, Lindsey'; Mier, Jena**Cc:** 'Eggerding, Matthew' ([MEggerding@eqt.com](mailto:MEggerding@eqt.com))**Subject:** Mountain Valley Pipeline TNC Poor Mountain Easement Crossing

---

**CAUTION - EXTERNAL EMAIL**

Dear Megan and Lindsey,

Would it be possible for the Conservancy to receive an updated shapefile of the most current project alignment? We are most interested in the segment that would affect the easement held by the Conservancy over Poor Mountain, along with the route variations that were considered.

Thank you.

Judy

My current work schedule is Monday 9-5; Tuesday - Friday 8:30-2:30

**Judy K. Dunscomb**

*Senior Conservation Scientist*

(434) 981-6907 (Mobile)

(434) 951-0573 (Phone)

(434) 817-1768 (Fax)

**The Nature Conservancy**

490 Westfield Rd.

Charlottesville, VA 22901

[nature.org](http://nature.org)

