

SEE REFERENCE DRAWINGS  
MVP-AR-H600-09  
& PA-SUWV-H600-09 & 10

SEE REFERENCE DRAWINGS  
MVP-AR-H600-09  
& PA-SUWV-H600-14 & 15

**LEGEND**

- PERMANENT ACCESS ROAD
- TEMPORARY ACCESS ROAD
- PROPOSED H600 PIPELINE
- PROPOSED PERMANENT EASEMENT
- TEMPORARY WORK SPACE
- ADDITIONAL TEMPORARY WORK SPACE
- STUDY CORRIDOR
- WETLAND
- STREAM
- PROPERTY LINE
- ROAD RIGHT-OF-WAY LINE
- GATE - GATE POST
- CULVERT
- PIPELINE MARKER
- OVERHEAD POWER LINE

PROJECTION: UTM ZONE 17  
HORIZONTAL DATUM: NAD 83 US SURVEY FEET  
VERTICAL DATUM: NAVD88

REFERENCE DRAWINGS		REVISIONS			
DRAWING NUMBER	TITLE	REV.	BY	DATE	DESCRIPTION
0		DRF		10-15-15	REV 4.0.0 ISSUED TO FERC
1		DLM		04-19-16	REV PER FERC DATA REQUEST No.2

**HOLLAND ENGINEERING**

220 Hoover Boulevard, Suite 2  
Holland, Michigan 49423-3766  
T 616-392-5938 F 616-392-2116

26555 Evergreen Rd., Suite 430  
Southfield, Michigan 48076  
T 248-827-7322 F 248-827-7549

www.hollandengineering.com

APPROVED FOR FERC		APPROVED FOR BIDDING		APPROVED FOR CONSTRUCTION	
REV.	BY	DATE	REV.	BY	DATE
0	RRR	10-15-15			

HORIZ. SCALE: 1" = 200'

DRAWN BY: HEI(DRF) 04/22/15

DRAFTING CK: .

ENGINEERING CK: .

UIE JOB NO.: .

AFEIP O.NO.: .

HEI PROJECT NO.: 14-10-052

UIE FILE NO.: .

DRAWING NO.: MVP-ADAR-H600-67

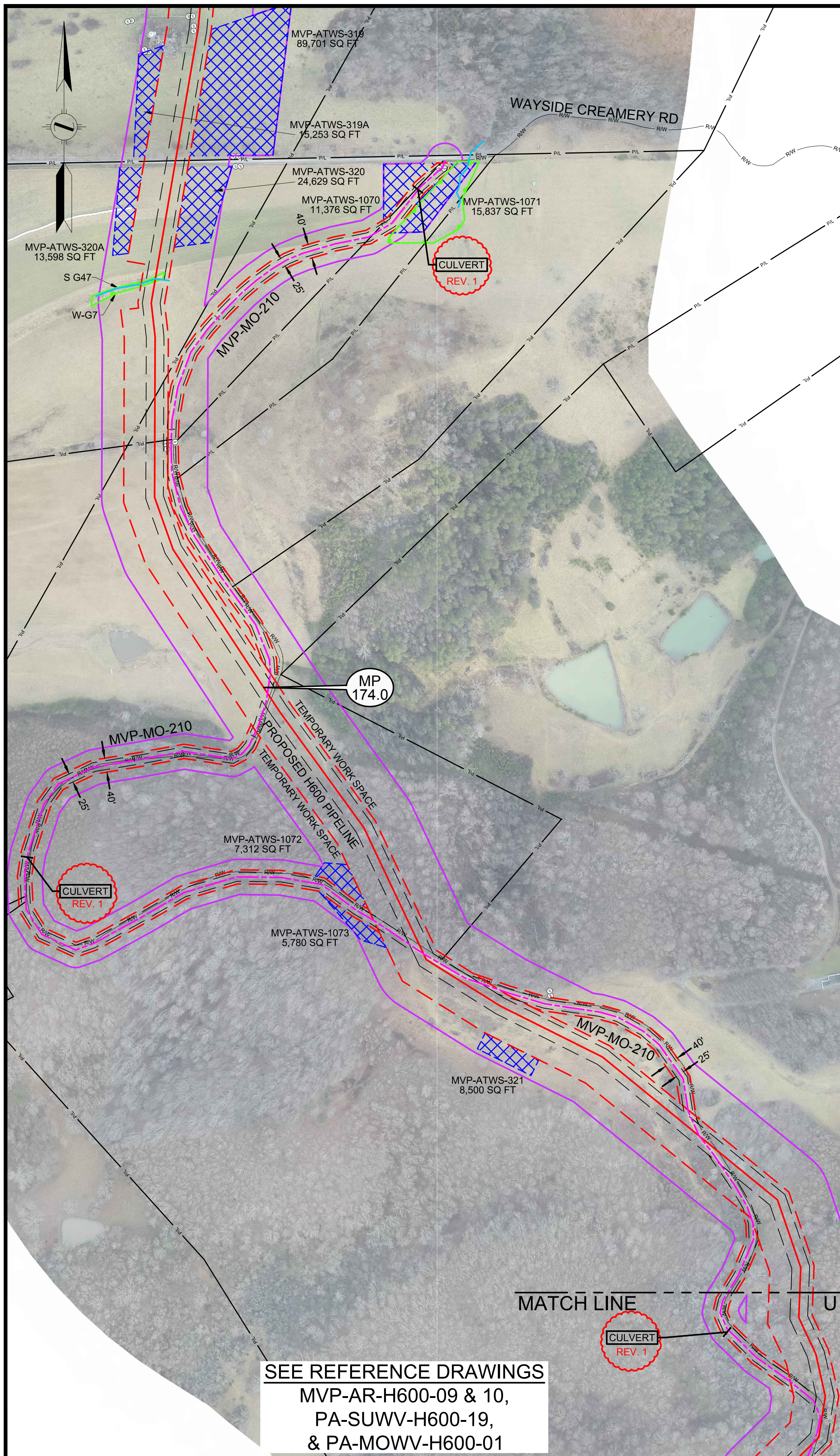
SHEET 67 OF 105 REV. 1

DATE OF PLOT: 4/20/16 4:34 PM

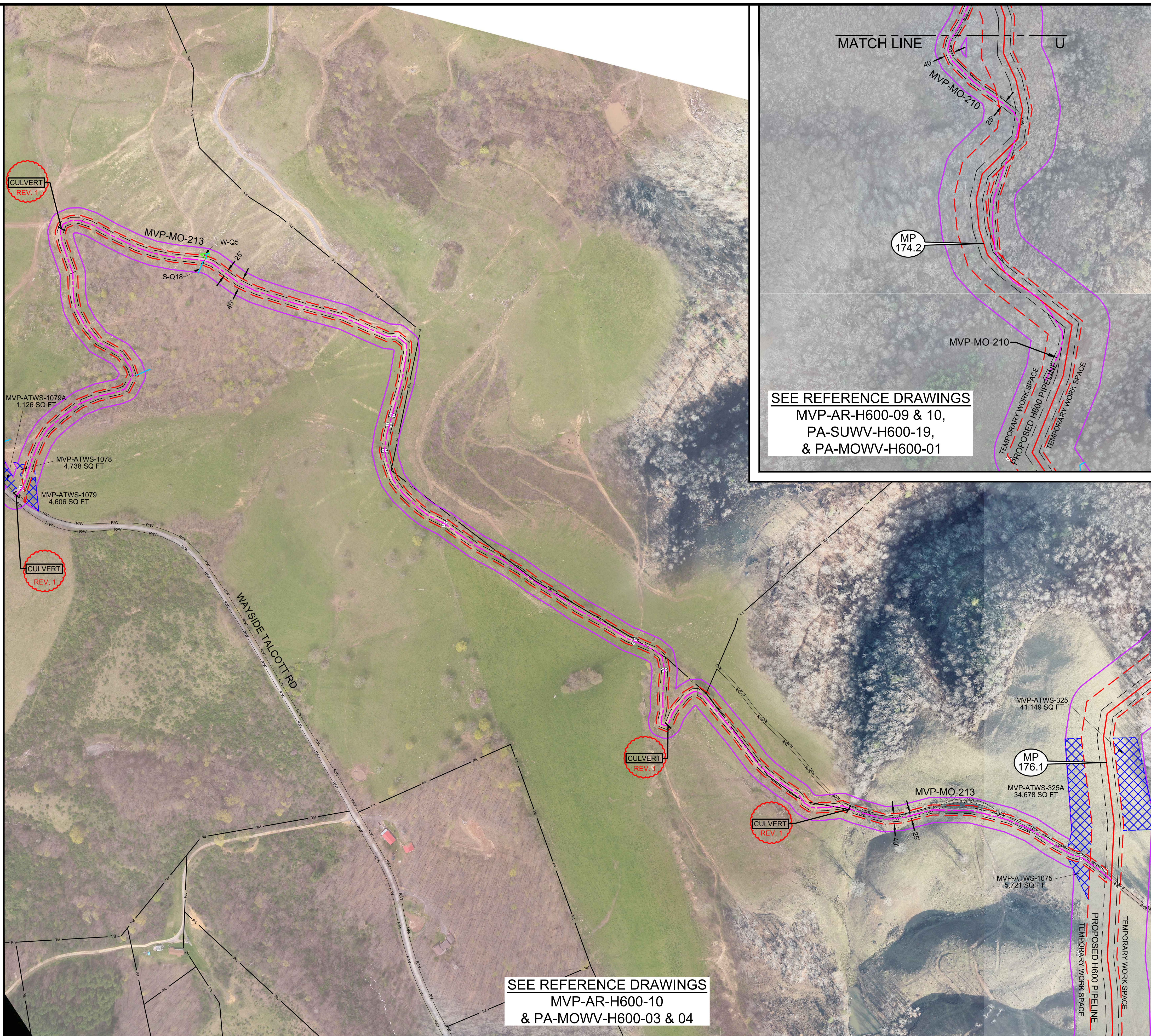
**Mountain Valley PIPELINE**

AERIAL DETAILS  
PROPOSED ACCESS ROADS  
MVP PIPELINE PROJECT - H600 LINE  
SUMMERS COUNTY, W.V.





SEE REFERENCE DRAWINGS  
MVP-AR-H600-09 & 10,  
PA-SUWV-H600-19,  
& PA-MOWV-H600-01



SEE REFERENCE DRAWINGS  
MVP-AR-H600-10  
& PA-MOWV-H600-03 & 04

SEE REFERENCE DRAWINGS  
MVP-AR-H600-09 & 10,  
PA-SUWV-H600-19,  
& PA-MOWV-H600-01

**LEGEND**

- PERMANENT ACCESS ROAD
- TEMPORARY ACCESS ROAD
- PROPOSED H600 PIPELINE
- PROPOSED PERMANENT EASEMENT
- TEMPORARY WORK SPACE
- ADDITIONAL TEMPORARY WORK SPACE
- STUDY CORRIDOR
- WETLAND
- STREAM
- PROPERTY LINE
- ROAD RIGHT-OF-WAY LINE
- GATE - GATE POST
- CULVERT
- PIPELINE MARKER
- PIPELINE
- OVERHEAD POWER LINE

PROJECTION: UTM ZONE 17  
HORIZONTAL DATUM: NAD 83 US SURVEY FEET  
VERTICAL DATUM: NAVD88

REFERENCE DRAWINGS		REVISIONS			
DRAWING NUMBER	TITLE	REV	BY	DATE	DESCRIPTION
		0	DRF	10-15-15	REV 4.0.0 ISSUED TO FERC
		1	DLM	04-19-16	REV PER FERF DATA REQUEST No.2

**HOLLAND ENGINEERING**

220 Hoover Boulevard, Suite 2 | 26555 Evergreen Rd., Suite 430  
Holland, Michigan 49423-3766 | Southfield, Michigan 48076  
T 616-392-5938 F 616-392-2116 | T 248-827-7322 F 248-827-7549

www.hollandengineering.com

APPROVED FOR FERF			APPROVED FOR BIDDING			APPROVED FOR CONSTRUCTION		
REV.	BY	DATE	REV.	BY	DATE	REV.	BY	DATE
0	RRR	10-15-15						

HORZ. SCALE: 1" = 200'

DRAWN BY: HEI(DRF) 04/22/15

DRAFTING CK: .

ENGINEERING CK: .

UIE JOB NO.: .

AFEIP O NO.: .

HEI PROJECT NO.: 14-10-052

UIE FILE NO.: .

DRAWING NO.: MVP-ADAR-H600-69

SHEET 69 OF 105 REV. 0

DATE OF PLOT: 4/20/16 4:39 PM

**Mountain Valley PIPELINE**

AERIAL DETAILS  
PROPOSED ACCESS ROADS  
MVP PIPELINE PROJECT - H600 LINE  
MONROE COUNTY, W.V.