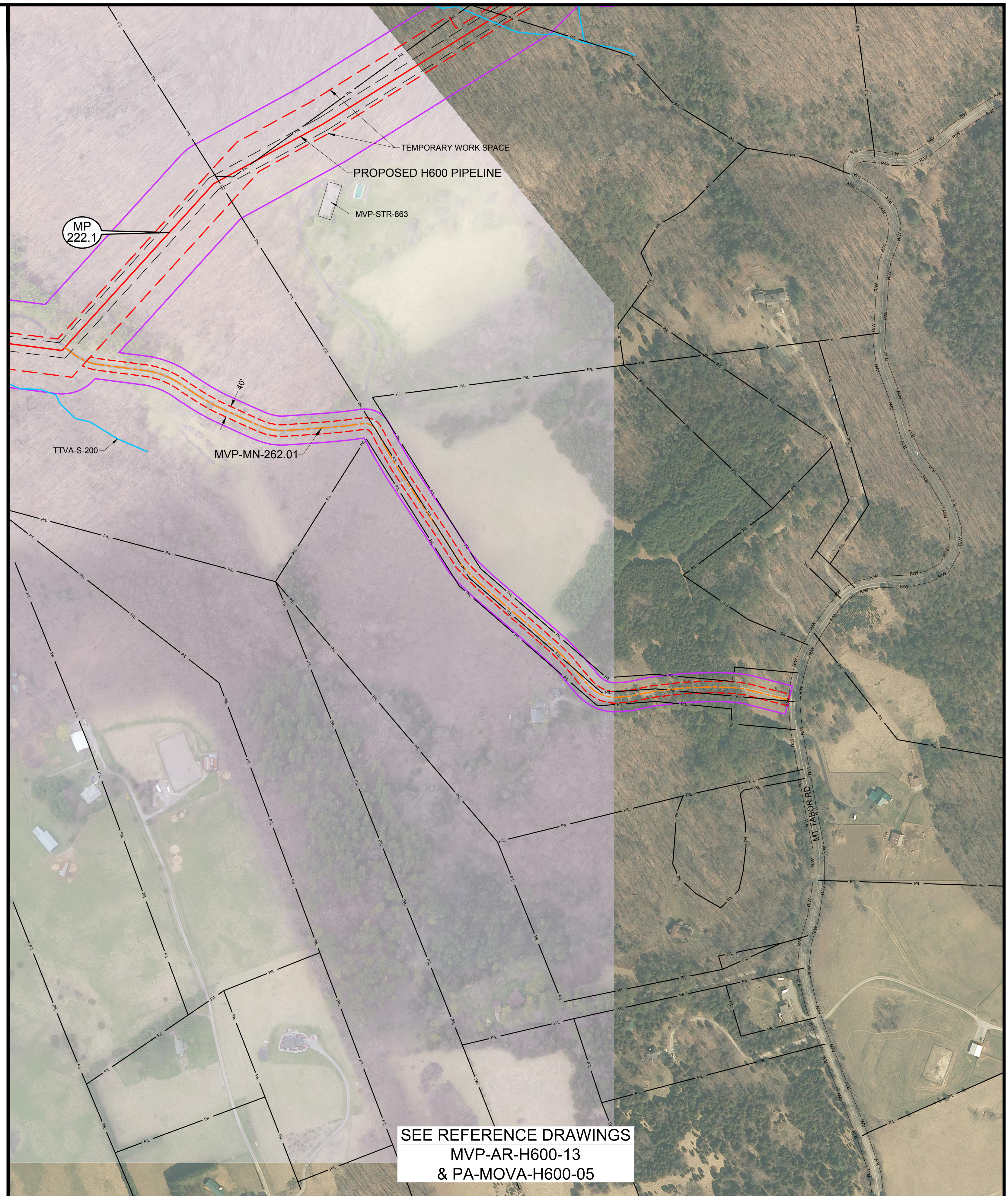


SEE REFERENCE DRAWINGS
MVP-AR-H600-13
& PA-MOVA-H600-11 & 12



SEE REFERENCE DRAWINGS
MVP-AR-H600-13
& PA-MOVA-H600-05

LEGEND	
	PERMANENT ACCESS ROAD
	TEMPORARY ACCESS ROAD
	PROPOSED H600 PIPELINE
	PROPOSED PERMANENT EASEMENT
	TEMPORARY WORK SPACE
	ADDITIONAL TEMPORARY WORK SPACE
	STUDY CORRIDOR
	WETLAND
	STREAM
	PROPERTY LINE
	ROAD RIGHT-OF-WAY LINE
	GATE - GATE POST
	CULVERT
	PIPELINE MARKER
	OVERHEAD POWER LINE

PROJECTION: UTM ZONE 17
HORIZONTAL DATUM: NAD 83 US SURVEY FEET
VERTICAL DATUM: NAVD88

REFERENCE DRAWINGS		REVISIONS			
DRAWING NUMBER	TITLE	REV.	BY	DATE	DESCRIPTION
RSS-H600-138	RESIDENTIAL SITE SPECIFIC	0	DRF	10-15-15	REV 4.0.0. ISSUED TO FERC
MVP-AR-H600-13	OVERALL QUAD MAP	1	DRF	01-13-16	FERC DATA REQUEST No. 1
PA-MOVA-H600-08	ALIGNMENT SHEET	2	DRF	04-21-16	FERC DATA REQUEST No. 2
PA-MOVA-H600-09	ALIGNMENT SHEET	3	DRF	09-03-16	REV 4.1.13 ISSUED FOR BID
PA-MOVA-H600-11	ALIGNMENT SHEET	4	DRF	10-14-16	OCTOBER 2016 PROPOSED ROUTE - ISSUED TO FERC
SSRA-H600-05	RECREATIONAL SITE SPECIFIC				
SSRA-H600-06	RECREATIONAL SITE SPECIFIC				

HOLLAND ENGINEERING

220 Hoover Boulevard, Suite 2
Holland, Michigan 49423-3766
T 616-392-5938 F 616-392-2116

26555 Evergreen Rd., Suite 430
Southfield, Michigan 48076
T 248-827-7322 F 248-827-7549

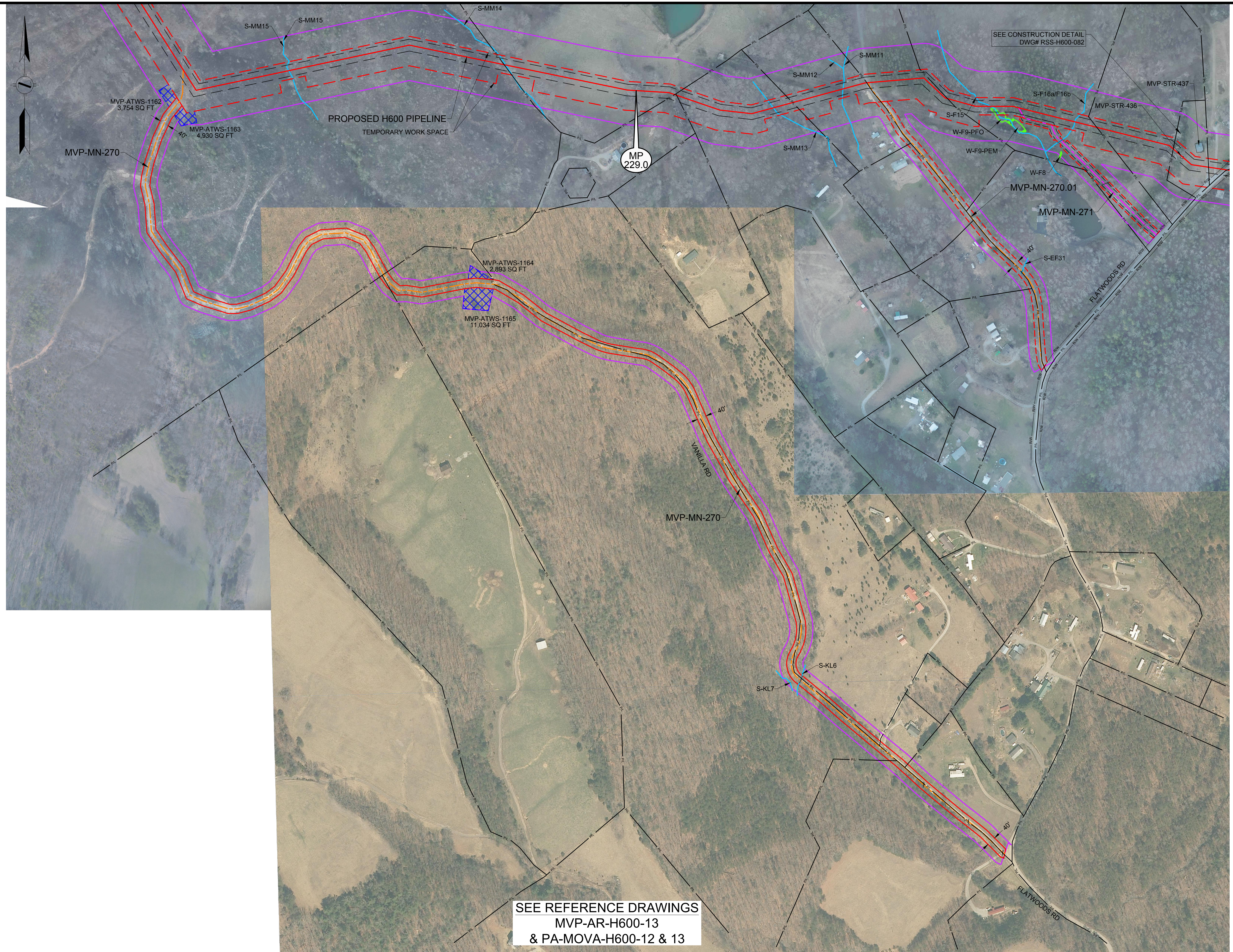
www.hollandengineering.com

APPROVED FOR FERC			APPROVED FOR BIDDING			APPROVED FOR CONSTRUCTION		
REV.	BY	DATE	REV.	BY	DATE	REV.	BY	DATE
0	RRR	10-15-15	3	RRR	09-03-16			
4	RRR	10-14-16						

HORIZ. SCALE: 1" = 200'
DRAWN BY: HEI(DRF)
04/22/15
DRAFTING CK:
ENGINEERING CK:
UIE JOB NO.:
AFEIP O NO.:
HEI PROJECT NO.: 14-10-052
UIE FILE NO.:
DRAWING NO.:
MVP-ADAR-H600-89
SHEET 89 OF 109
REV. 4
DATE OF PLOT: 10/12/16 6:01 PM

Mountain Valley PIPELINE

AERIAL DETAILS
PROPOSED ACCESS ROADS
MVP PIPELINE PROJECT - H600 LINE
MONTGOMERY COUNTY, VA



LEGEND	
	PERMANENT ACCESS ROAD
	TEMPORARY ACCESS ROAD
	PROPOSED H600 PIPELINE
	PROPOSED PERMANENT EASEMENT
	TEMPORARY WORK SPACE
	ADDITIONAL TEMPORARY WORK SPACE
	STUDY CORRIDOR
	WETLAND
	STREAM
	PROPERTY LINE
	ROAD RIGHT-OF-WAY LINE
	GATE - GATE POST
	CULVERT
	PIPELINE MARKER
	OVERHEAD POWER LINE

PROJECTION: UTM ZONE 17
 HORIZONTAL DATUM: NAD 83 US SURVEY FEET
 VERTICAL DATUM: NAVD88

REFERENCE DRAWINGS	
DRAWING NUMBER	TITLE
MVP-AR-H600-13	OVERALL QUAD MAP
PA-MOVA-H600-12	ALIGNMENT SHEET
PA-MOVA-H600-13	ALIGNMENT SHEET

REVISIONS			
REV	BY	DATE	DESCRIPTION
0	DRF	10-15-15	REV 4.0.0. ISSUED TO FERC
1	DRF	01-13-16	FERC DATA REQUEST No.1
2	DRF	04-21-16	FERC DATA REQUEST No.2
3	DRF	09-03-16	REV 4.1.13 ISSUED FOR BID
4	DRF	10-14-16	OCTOBER 2016 PROPOSED ROUTE - ISSUED TO FERC

HOLLAND ENGINEERING

220 Hoover Boulevard, Suite 2
 Holland, Michigan 49423-3766
 T 616-392-5938 F 616-392-2116

26555 Evergreen Rd, Suite 430
 Southfield, Michigan 48076
 T 248-827-7322 F 248-827-7549

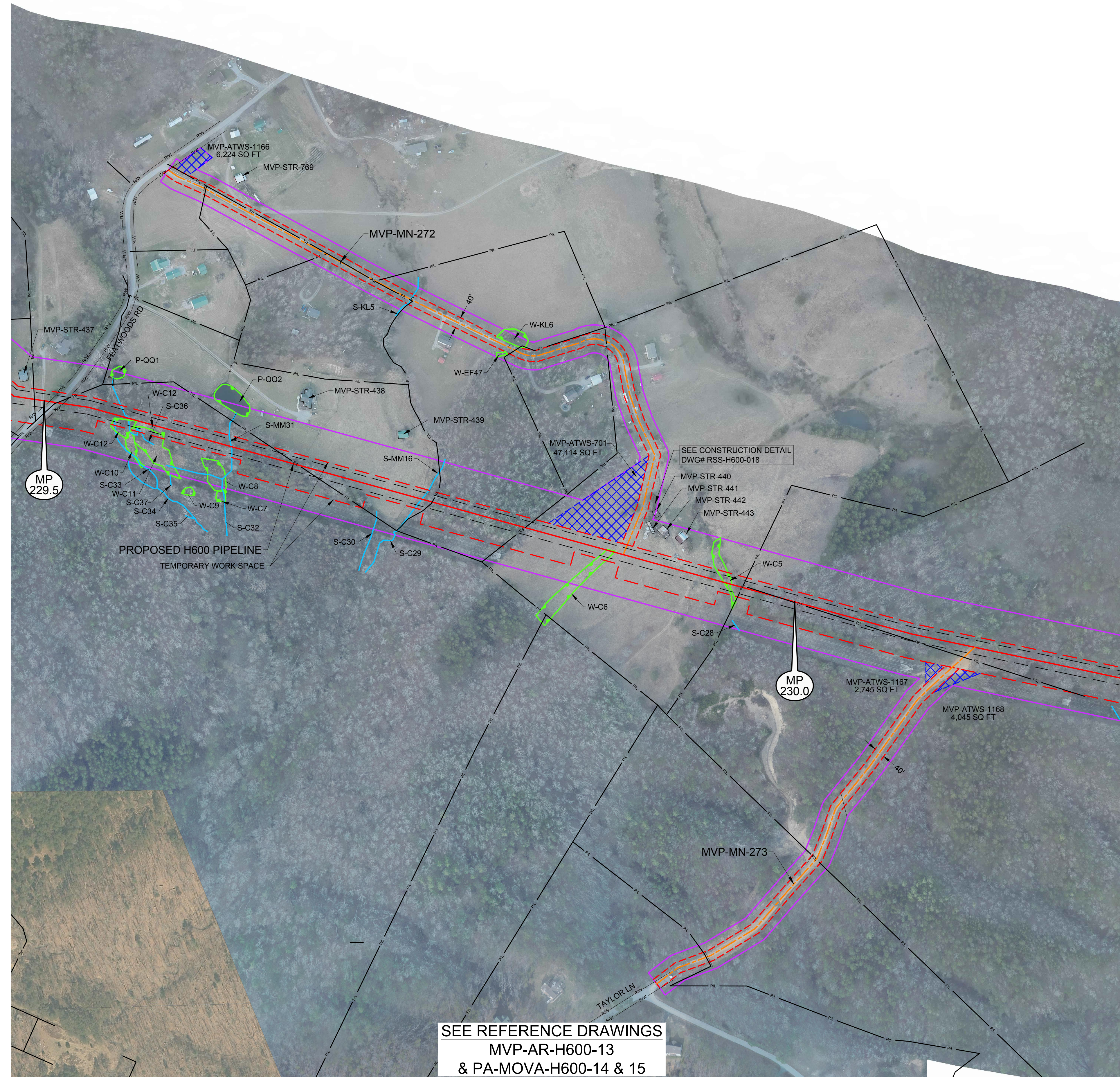
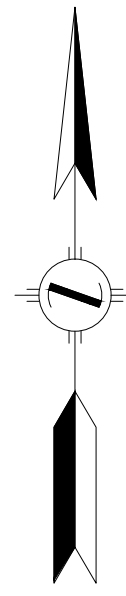
www.hollandengineering.com

APPROVED FOR FERC			APPROVED FOR BIDDING			APPROVED FOR CONSTRUCTION		
REV.	BY	DATE	REV.	BY	DATE	REV.	BY	DATE
0	RRR	10-15-15	3	RRR	09-03-16			
4	RRR	10-14-16						

DRAWN BY: HEI(DRF)		DATE: 04/22/15	
DRAWING NO.: MVP-ADAR-H600-90		SHEET 90 OF 109	
DATE OF PLOT: 10/13/16 8:06 AM			

Mountain Valley PIPELINE

AERIAL DETAILS
 PROPOSED ACCESS ROADS
 MVP PIPELINE PROJECT - H600 LINE
 MONTGOMERY COUNTY, VA



LEGEND	
	PERMANENT ACCESS ROAD
	TEMPORARY ACCESS ROAD
	PROPOSED H600 PIPELINE
	PROPOSED PERMANENT EASEMENT
	TEMPORARY WORK SPACE
	ADDITIONAL TEMPORARY WORK SPACE
	STUDY CORRIDOR
	WETLAND
	STREAM
	PROPERTY LINE
	ROAD RIGHT-OF-WAY LINE
	GATE - GATE POST
	CULVERT
	PIPELINE MARKER
	OVERHEAD POWER LINE

PROJECTION: UTM ZONE 17
 HORIZONTAL DATUM: NAD 83 US SURVEY FEET
 VERTICAL DATUM: NAVD88

REFERENCE DRAWINGS		REVISIONS	
DRAWING NUMBER	TITLE	REV	BY DATE DESCRIPTION
RSS-H600-018	RESIDENTIAL SITE SPECIFIC	0	DRF 10-15-15 REV 4.0.0. ISSUED TO FERC
RSS-H600-082	RESIDENTIAL SITE SPECIFIC	1	DRF 01-13-16 FERC DATA REQUEST No.1
MVP-AR-H600-13	OVERALL QUAD MAP	2	DRF 04-21-16 FERC DATA REQUEST No.2
PA-MOVA-H600-13	ALIGNMENT SHEET	3	DRF 09-03-16 REV 4.1.13 ISSUED FOR BID
PA-MOVA-H600-14	ALIGNMENT SHEET	4	DRF 10-14-16 OCTOBER 2016 PROPOSED ROUTE - ISSUED TO FERC

HOLLAND ENGINEERING

220 Hoover Boulevard, Suite 2
 Holland, Michigan 49423-3766
 T 616-392-5938 F 616-392-2116

26555 Evergreen Rd., Suite 430
 Southfield, Michigan 48076
 T 248-827-7322 F 248-827-7549

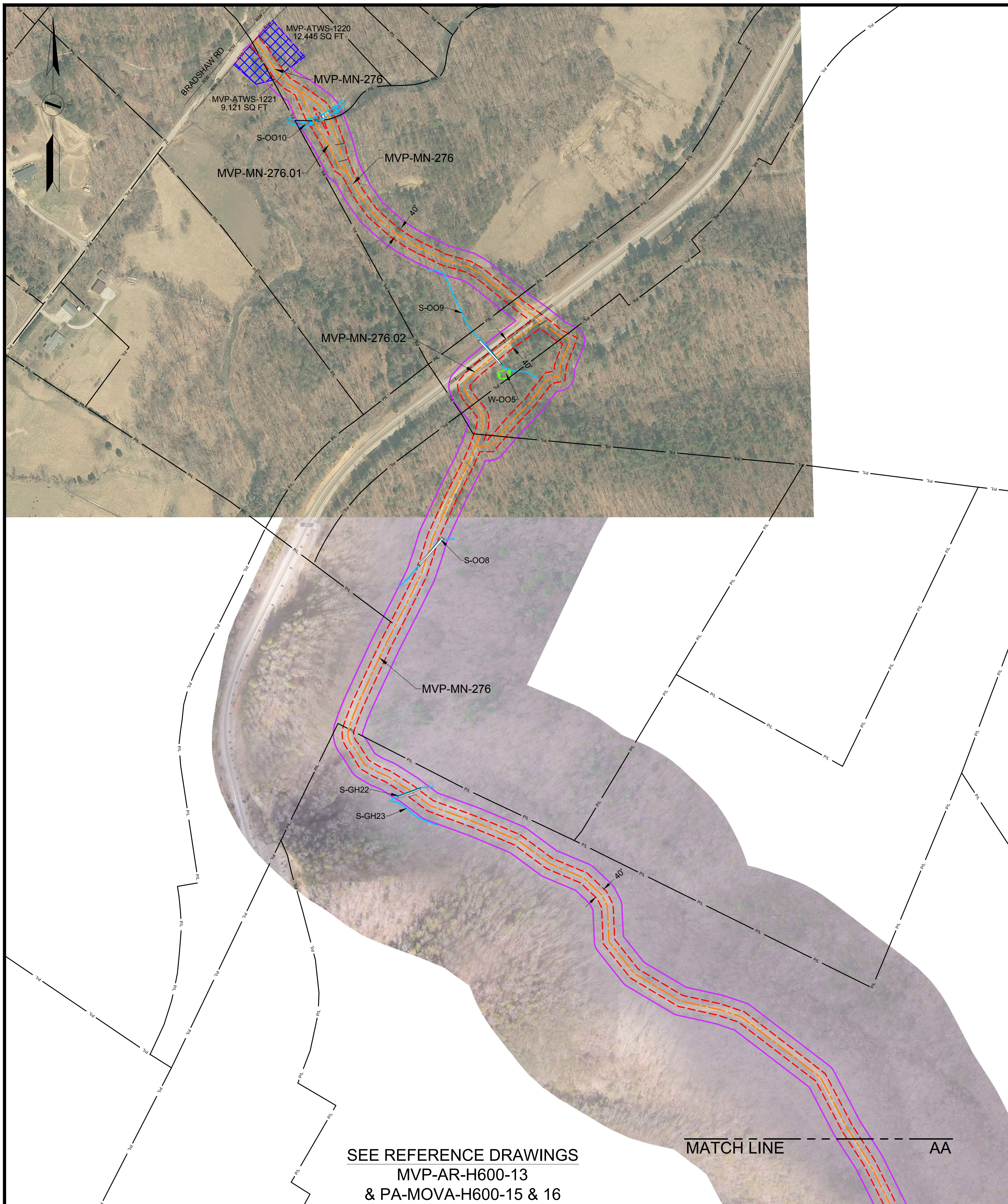
www.hollandengineering.com

APPROVED FOR FERC			APPROVED FOR BIDDING			APPROVED FOR CONSTRUCTION		
REV.	BY	DATE	REV.	BY	DATE	REV.	BY	DATE
0	RRR	10-15-15	3	RRR	09-03-16			
4	RRR	10-14-16						
		J.J.						

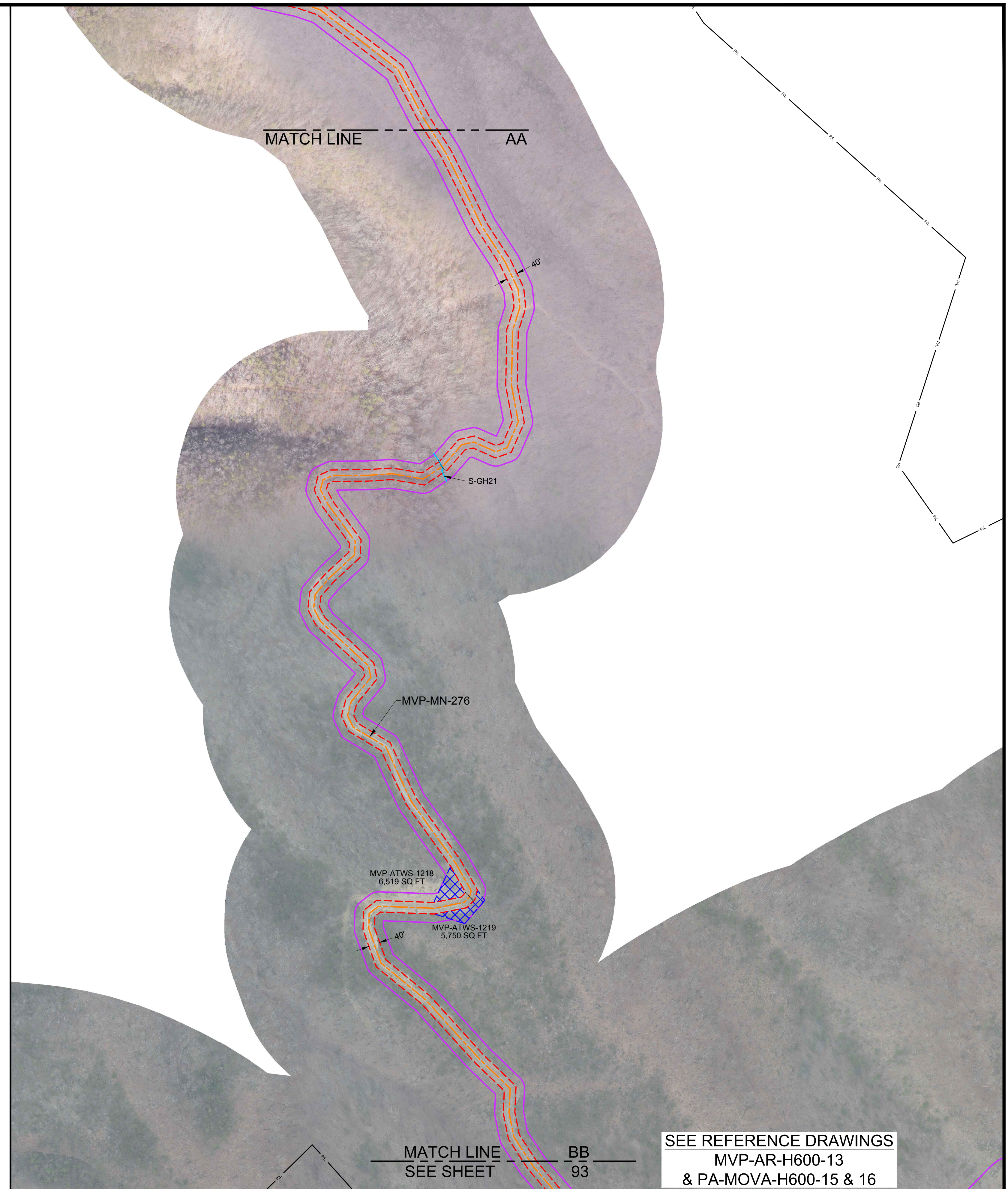
HORZ. SCALE: 1" = 200'	DATE OF PLOT: 10/12/16 6:02 PM
DRAWN BY: HEI(DRF)	04/22/15
DRAFTING CK:	
ENGINEERING CK:	
UIE JOB NO.:	
AFEIP O NO.:	
HEI PROJECT NO.:	14-10-052
UIE FILE NO.:	
DRAWING NO.:	MVP-ADAR-H600-91
SHEET	91 OF 109
REV.	REV. 4

Mountain Valley PIPELINE

AERIAL DETAILS
 PROPOSED ACCESS ROADS
 MVP PIPELINE PROJECT - H600 LINE
 MONTGOMERY COUNTY, VA



SEE REFERENCE DRAWINGS
MVP-AR-H600-13
& PA-MOVA-H600-15 & 16



SEE REFERENCE DRAWINGS
MVP-AR-H600-13
& PA-MOVA-H600-15 & 16

LEGEND

- PERMANENT ACCESS ROAD
- TEMPORARY ACCESS ROAD
- PROPOSED H600 PIPELINE
- PROPOSED PERMANENT EASEMENT
- TEMPORARY WORK SPACE
- ADDITIONAL TEMPORARY WORK SPACE
- STUDY CORRIDOR
- WETLAND
- STREAM
- PROPERTY LINE
- ROAD RIGHT-OF-WAY LINE
- GATE - GATE POST
- CULVERT
- PIPELINE MARKER
- OVERHEAD POWER LINE

PROJECTION: UTM ZONE 17
HORIZONTAL DATUM: NAD 83 US SURVEY FEET
VERTICAL DATUM: NAVD88

REFERENCE DRAWINGS

DRAWING NUMBER	TITLE
MVP-AR-H600-13	OVERALL QUAD MAP
PA-MOVA-H600-15	ALIGNMENT SHEET

REVISIONS

REV	BY	DATE	DESCRIPTION
0	DRF	10-15-15	REV 4 0.0. ISSUED TO FERC
1	DRF	01-13-16	FERC DATA REQUEST No.1
2	DRF	04-21-16	FERC DATA REQUEST No.2
3	DRF	09-03-16	REV 4.1.13 ISSUED FOR BID
4	DRF	10-14-16	OCTOBER 2016 PROPOSED ROUTE - ISSUED TO FERC

HOLLAND ENGINEERING

220 Hoover Boulevard, Suite 2
Holland, Michigan 49423-3766
T 616-392-5938 F 616-392-2116

26555 Evergreen Rd., Suite 430
Southfield, Michigan 48076
T 248-827-7322 F 248-827-7549

www.hollandengineering.com

APPROVED FOR FERC			APPROVED FOR BIDDING			APPROVED FOR CONSTRUCTION		
REV.	BY	DATE	REV.	BY	DATE	REV.	BY	DATE
0	RRR	10-15-15	3	RRR	09-03-16			
4	RRR	10-14-16						

HORIZ. SCALE: 1" = 200'

DRAWN BY: HEI(DRF)	09/27/15
DRAFTING CK:	
ENGINEERING CK:	
UIE JOB NO.:	
AFE/P.O. NO.:	
HEI PROJECT NO.:	14-10-052
UIE FILE NO.:	
DRAWING NO.:	MVP-ADAR-H600-92
SHEET	92 OF 109
REV.	REV. 4
DATE OF PLOT:	10/12/16 6:02 PM

Mountain Valley PIPELINE

AERIAL DETAILS
PROPOSED ACCESS ROADS
MVP PIPELINE PROJECT - H600 LINE
MONTGOMERY COUNTY, VA